

A decorative arrangement featuring a string of colorful, patterned fabric pouches hanging against a light-colored, textured wall. Below the string, a white ceramic rabbit figurine sits atop a white metal trunk, which is placed on a larger grey metal trunk. To the right, a long, narrow, dark grey fabric runner with pink and white patterns hangs vertically.

GROWTH CHART

AMYSINIBALDI



FABRICS DESIGNED BY AMY SINIBALDI

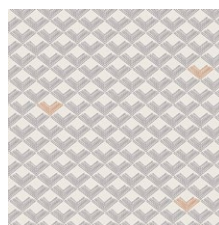
PLAY DATE



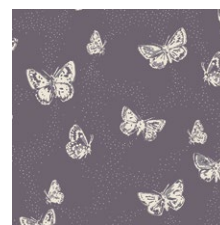
DHS-1080
TIPTOE FROLIC



DHS-1081
WALTZ MOONLIT



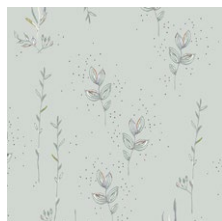
DHS-1082
ROOFTILES SLATE



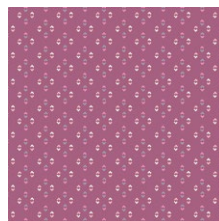
DHS-1083
FLUTTERDUST STARRY



DHS-1084
JOLIE PETAL



DHS-1085
MEADOW FIELD



DHS-1086
LUCY MAUVE

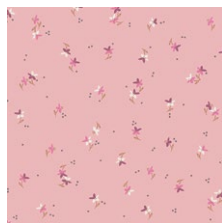


DHS-1087
PRAIRIE DOT FRESH

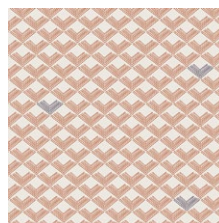
TEA TIME



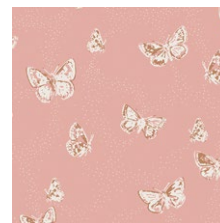
DHS-2080
TIPTOE DUSK



DHS-2081
WALTZ SUNLIT



DHS-2082
ROOFTILES CLAY



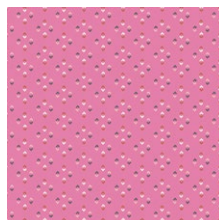
DHS-2083
FLUTTERDUST HAZE



DHS-2084
JOLIE FRESH



DHS-2085
MEADOW POSY



DHS-2086
LUCY ROSE



DHS-2087
PRAIRIE DOT SERENE



FEEL THE DIFFERENCE © 2017 Courtesy of Art Gallery Quilts LLC. All Rights Reserved.



FINISHED SIZE | 11" x 72"

FABRIC REQUIREMENTS

Fabric A	DHS-1081	1½ yd.
Fabric B	DHS-2086	⅛ yd.
Fabric C	DHS-2085	F8

BACKING FABRIC

4 yds. DHS-1087 *(Included)*

CUTTING DIRECTIONS

*¼" seam allowances are included.
WOF means width of fabric.*

Four (4) 37" x 12" rectangles from fabric **A**.

Two (2) WOF x 1" strips from fabric **B**.
Subcut seven (7) 6" x 1" rectangles
six (6) 4" x 1" rectangles

Ten (10) templates from fabric **B**.

Three (3) templates from fabric **C**.

CONSTRUCTION

Sew all rights sides together with ¼" seam allowance.

- Apply Steam a Seam to the wrong side of all the rectangles and templates from fabric **B** and **C**.
- Take two (2) 37" x 12" rectangles from fabric **A** and join them by the 12" side.
- Repeat the same process with the other two (2) 37" x 12" rectangles from fabric **A**.

XXXXXXXXXXXXXXXXXXXXXXXXXXXXXXXXXXXX

- Take seven (7) 6" x 1" rectangles from fabric **B**, and six (6) 4" x 1" rectangles from fabric **B**.
- Place them on the fabric **A** strip every 5" apart.
- For fabric placement and attachment follow Diagram 1.

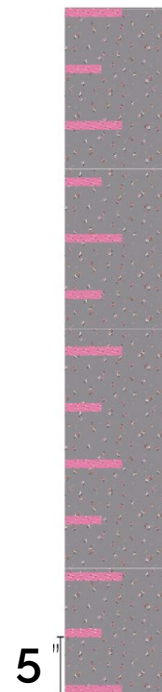


DIAGRAM 1

- Place the templates from fabrics B and C following Diagram 2.

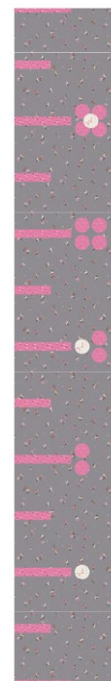
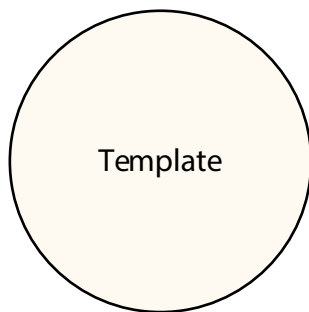


DIAGRAM 2

- Place the batting and quilt your piece.
- Take the 74" x 12" rectangle from fabric **A**.
- Place it face to face to the quilted piece and sew all around at $\frac{1}{4}$ ", leaving a 4" space.
- Flip the piece to the right side.
- Press and do an edge stitch to flatten the Growth Chart.



artgalleryfabrics.com

NOTE: While all possible care has been taken to ensure the accuracy of this pattern, We are not responsible for printing errors or the way in which individual work varies. Please read instructions carefully before starting the construction of this quilt. If desired, wash and iron your fabrics before starting to cut.

