



A square quilt block is displayed on a light-colored wooden surface. The block features a central white panel with a pattern of stylized fish in blue, teal, and black. Surrounding this center are eight triangular fabric pieces in various shades of teal and blue, some with geometric patterns and others with floral or abstract designs. The corners of the block are finished with dark blue fabric featuring white patterns. The entire quilt is laid on a light-colored wooden surface.

XXXXXXXXXXXXXXXXXXXXXXXXXXXX

ANGLES

A DIVISION OF AGF



Quilt BLOCK collection

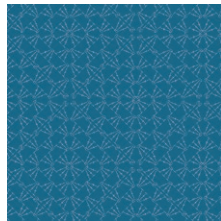
For More Block Tutorials :
<http://bit.ly/AGFquiltblockcollectionplaylist>



FABRICS DESIGNED BY MATHEW BOUDREAU



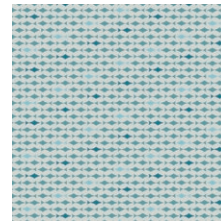
CTR-24900
SCHOOL OF FISH



CTR-24901
CROCHETING THE NET



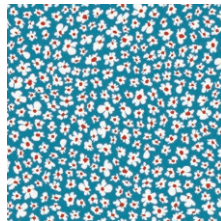
CTR-24902
BLUE BANK FLORA



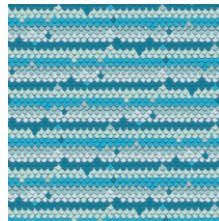
CTR-24903
RIDE THE CURRENT



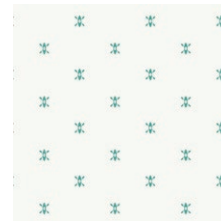
CTR-24904
CATCH & RELEASE



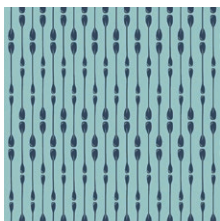
CTR-24905
FLOWER STREAM



CTR-24906
REFLECTORS



CTR-24907
ROWING



CTR-24908
PADDLE ROWS



CTR-24909
GOODLUCK TRAILS



CTR-24910
RIVER RULES



CTR-24911
MOUNTAIN SPACE



PE-403
FRESH WATER



FEEL THE DIFFERENCE © 2019 Courtesy of Art Gallery Quilts LLC. All Rights Reserved.

FINISHED SIZE | 12" x 12"

FABRIC REQUIREMENTS

Fabric A	CTR-24900
Fabric B	CTR-24901
Fabric C	CTR-24902
Fabric D	CTR-24903
Fabric E	CTR-24904
Fabric F	PE-403

CUTTING DIRECTIONS

- One (1) 4 1/2" square from Fabric **A**
- Four (4) 2 1/2" x 4 1/2" strips from Fabric **B, C,** and **D**
- Four (4) 2 1/2" squares from Fabric **B** and **D**
- Two (2) 4" squares from Fabric **D**
- One (1) 4" square from Fabric **E** and **F**
- Eight (8) 2 1/2" squares from Fabric **C** and **F**

CONSTRUCTION

Sew all rights sides together with 1/4" seam allowance.

- To make the flying geese for your block we are going to use the corner square triangle method.
- Take four 2 1/2" x 4 1/2" strips from Fabric **D** and eight 2 1/2" squares from Fabric **C**. Draw a diagonal line on your 2 1/2" squares from corner to corner.
- Place a square on each end of your strip with the diagonal line facing in to the center of your strip. Sew on the line you drew. Trim your seam allowance and repeat this same process with the other side of your strip.
- Sew on the line you drew and trim your seam allowance to 1/4". Make four of these units.

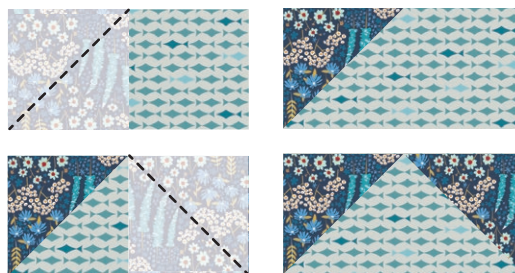


DIAGRAM 1

- To make your remaining flying geese repeat the corner square triangle method with your strips from Fabric **D** and four 2 1/2" squares from Fabric **B** and **F**.
- Place your squares in each corner and sew on the line you drew, trimming your seam allowances to 1/4" as you go.

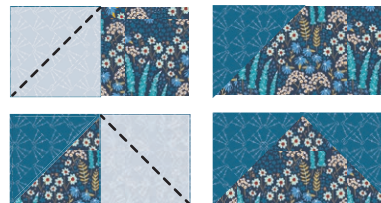


DIAGRAM 2.1

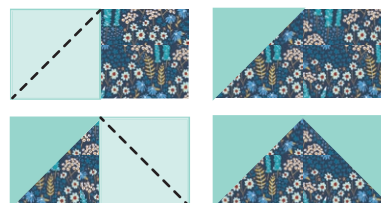


DIAGRAM 2.2

- Now that you have all of your flying geese complete it's time to make your HST's using the four at a time method.
- Take a 4" square Fabric **D** and **E** and **D** and **F**. Place these squares right sides together and sew around your squares at 1/4"
- Cut your squares on both diagonals to reveal four HST's , repeat this same process to make all your HST's.

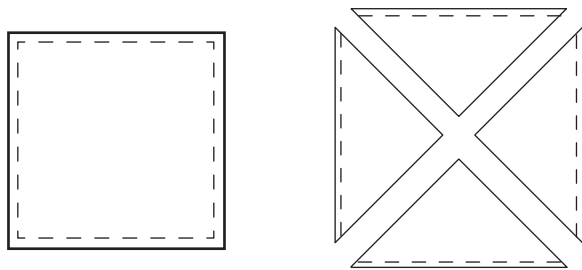


DIAGRAM 3

- To make our remaining unit we will need four 2 1/2" x 4 1/2" strips from Fabric **B** and four 2 1/2" squares from Fabric **D** and **F**.
- Draw diagonal lines from corner to corner on your 2 1/2" squares and place in each corner as follows. Sew on the line your drew and trim your seams allowance as you go.

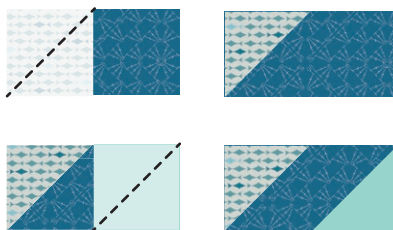


DIAGRAM 4.1

Make 2 like this

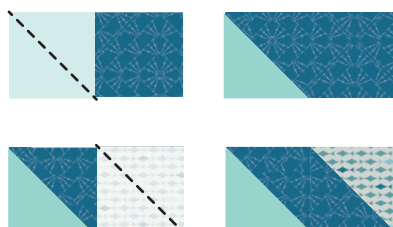


DIAGRAM 4.2

Make 2 like this



- Now pair your **D/F** and **D/E** HST's together to create four units.

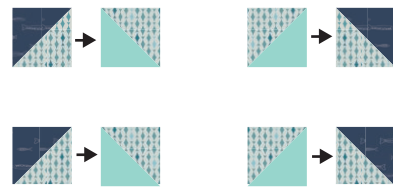


DIAGRAM 5

- To create your corner blocks sew the follow units together like this.

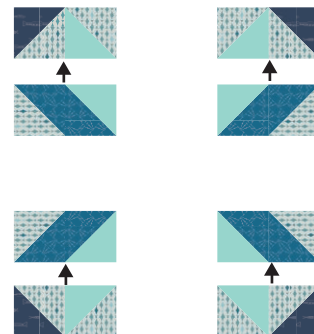


DIAGRAM 6

- To create your middle blocks sew your flying geese together to create four blocks like this, where Fabric C will create a arrow shape.

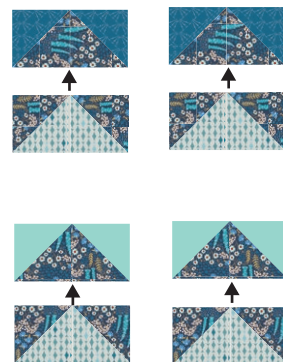
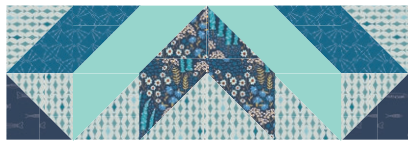


DIAGRAM 7

- Place your units out following the block design and sew your blocks into rows.



- Sew your rows together matching up seams and your Flying Star Block is complete!



Congratulations
& enjoy



artgalleryfabrics.com

NOTE: While all possible care has been taken to ensure the accuracy of this pattern, We are not responsible for printing errors or the way in which individual work varies. Please read instructions carefully before starting the construction of this quilt. If desired, wash and iron your fabrics before starting to cut.

© 2019 Courtesy of Art Gallery Quilts LLC. All Rights Reserved.