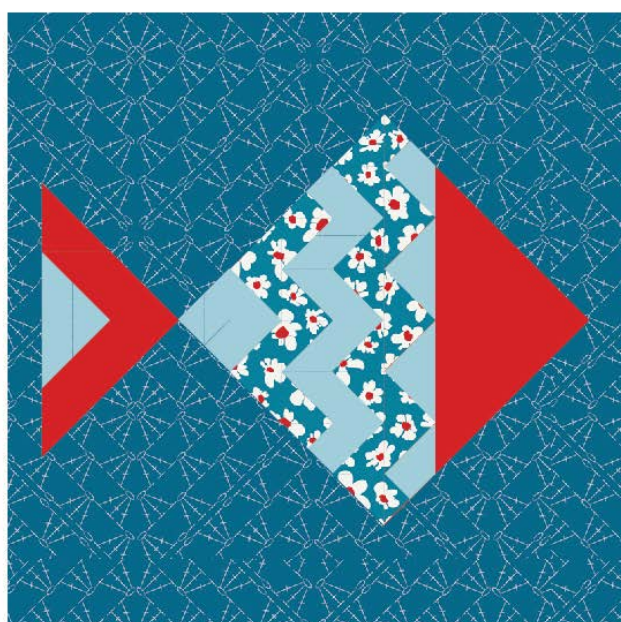
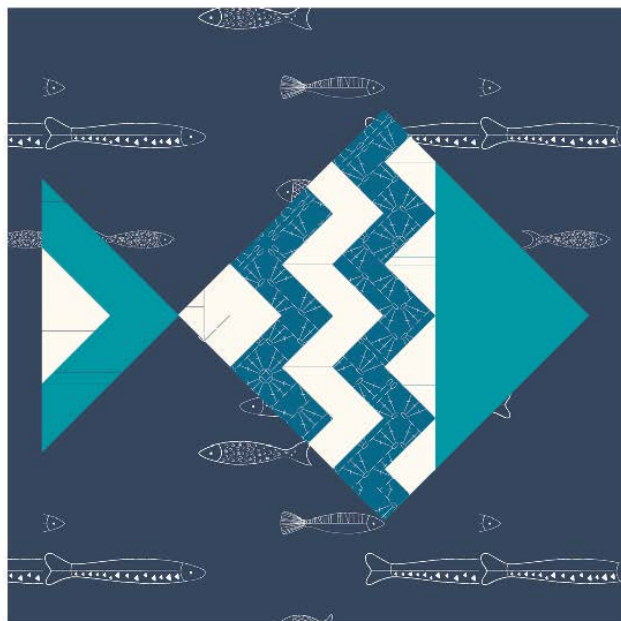


X
X
X
X
X
X
X
X
X
X
X
X



ANGLES

A DIVISION OF AGF

FREE PATTERN

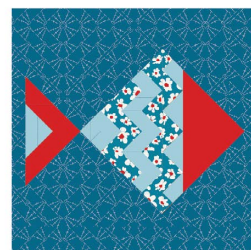
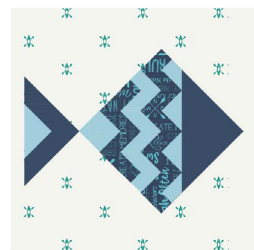
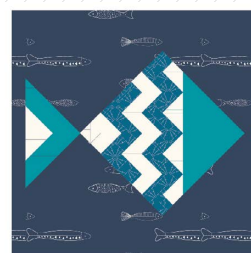
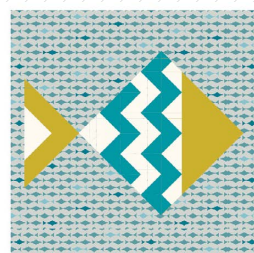
XXXXXXXXXXXXXXXXXXXXXXXXXXXX

FISHING

DESIGNED BY AGF STUDIO

CATCH & RELEASE

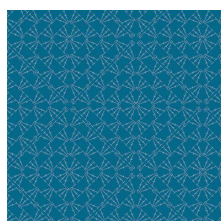
FABRICS DESIGNED BY MATHEW BOUDREAUX



COLOR OPTION



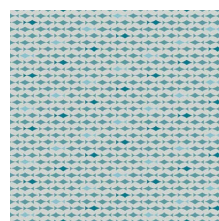
CTR-24900
SCHOOL OF FISH



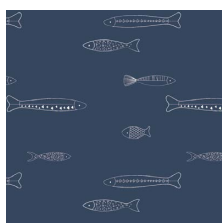
CTR-24901
CROCHETING THE NET



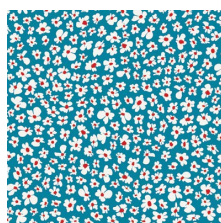
CTR-24902
BLUE BANK FLORA



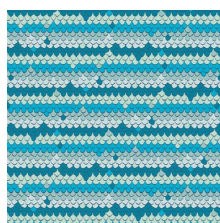
CTR-24903
RIDE THE CURRENT



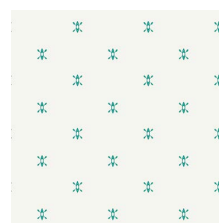
CTR-24904
CATCH & RELEASE



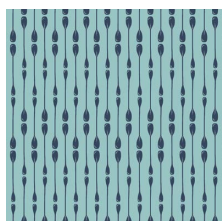
CTR-24905
FLOWER STREAM



CTR-24906
REFLECTORS



CTR-24907
ROWING



CTR-24908
PADDLE ROWS



CTR-24909
GOODLUCK TRAILS



CTR-24910
RIVER RULES



CTR-24911
MOUNTAIN SPACE



FEEL THE DIFFERENCE © 2019 Courtesy of Art Gallery Quilts LLC. All Rights Reserved.



FINISHED SIZE | 9" x 9"

FABRIC REQUIREMENTS

Block 1

Fabric A	CTR-24903	FQ
Fabric B	PE-433	1/8 yd.
Fabric C	PE-497	1/8 yd.
Fabric D	PE-407	1/8 yd.

Block 2

Fabric A	CTR-24904	FQ
Fabric B	PE-433	1/8 yd.
Fabric C	CTR-24901	1/8 yd.
Fabric D	PE-497	1/8 yd.

Block 3

Fabric A	CTR-24900	FQ
Fabric B	PE-434	1/8 yd.
Fabric C	CTR-24910	1/8 yd.
Fabric D	PE-467	1/8 yd.

Block 1

Fabric A	CTR-24901	FQ
Fabric B	PE-434	1/8 yd.
Fabric C	CTR-24905	1/8 yd.
Fabric D	PE-437	1/8 yd.

CUTTING INSTRUCTIONS

1/4" seam allowances are included.
WOF means width of fabric.

- Six (6) 3 1/2" x 3 1/2" squares from fabric **A**.
- Two (2) 10 1/2" x 2" rectangles from fabric **A**.
- Two (2) 1 1/2" x 6 1/2" rectangles from fabric **A**.

- Three (3) 3 1/4" x 3 1/4" squares from fabric **B**.
- One (1) 1 7/8" x 1 7/8" square from fabric **B**.
- One (1) 6 1/2" x 1 1/4" rectangle from fabric **B**.
- Two (2) 1 1/4" x 1 1/4" squares from fabric **B**.
- Three (3) 3 1/4" x 3 1/4" squares from fabric **C**.
- Two (2) 2 3/4" x 1 1/4" rectangles from fabric **C**.
- Two (2) 1 1/4" x 1 1/4" squares from fabric **C**.
- One (1) 6 1/2" x 2 3/4" rectangle from fabric **D**.
- One (1) 6 1/2" x 1 1/2" rectangle from fabric **D**.
- Two (2) 2 1/2" x 1 1/2" rectangle from fabric **D**.
- One (1) 1 7/8" x 1 7/8" square from fabric **D**.

CONSTRUCTION

Sew all rights sides together with 1/4" seam allowance.

Eight at a Time HST

- Pair Fabrics **A** through **L**, following Diagram 1.
- Take three (3) 3 1/4" x 3 1/4" squares from fabrics **B** and **C**.
- Pair them to do the eight at a time HST (half square triangle) method. In total you will get twenty four (24) HST (eight (8) from each pair), but you will only need twenty two (22).
- Align one square from fabric **B** with one square from fabric **C** face to face. Draw two diagonal lines (blue) on the back of one square. Stitch at 1/4" from each side of each line. Cut following the drawn lines and also a vertical and an horizontal line crossing the center (red). As a result you will get eight (8) **BC** HST.

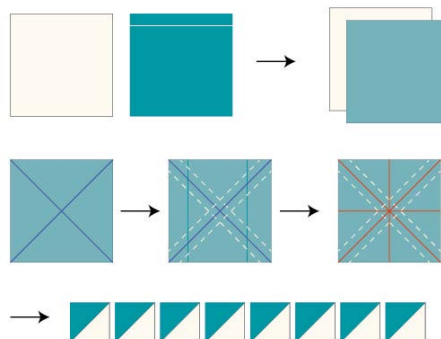


DIAGRAM 1

Block a:

- Take twenty two (22) **BC** HST, two (2) $1\frac{1}{4}" \times 1\frac{1}{4}"$ squares from fabrics **B** and **C**, and two (2) $2\frac{3}{4}" \times 1\frac{1}{4}"$ rectangles from fabric **C**.
- Join them to make the following Rows:

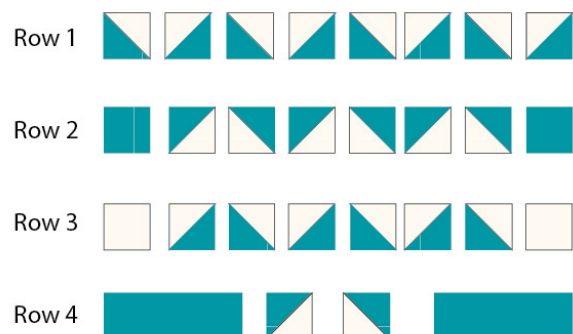


DIAGRAM 2

- Take one (1) 6½" x 2¾" rectangle from fabric **D**, and one (1) 6½" x 1¼" rectangle from fabric **B**.
- Join them following Diagram 3.

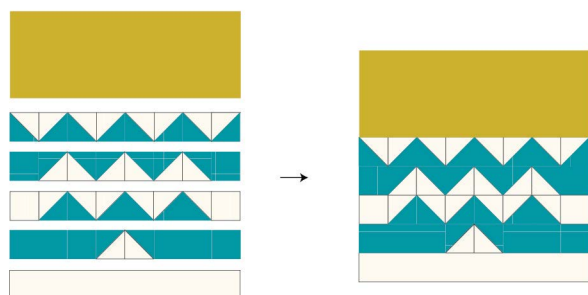


DIAGRAM 3

Corner Square Triangle Method

- Take four (4) 3½" x 3½" squares from fabric **A**, and join them to the corners of Block a using the corner square triangle method.
- Align the square from fabric **A** with one corner of Block a face to face. Stitch on the diagonal. Trim at ¼" from the stitched line on the outer side of Block a. Press open the seam. Repeat the process in all the corners.

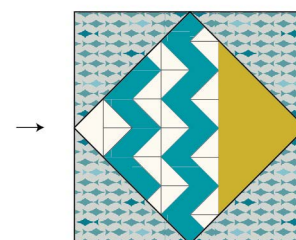
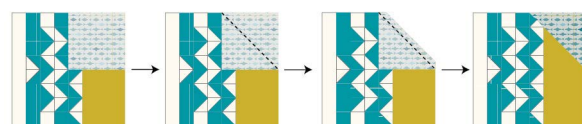


DIAGRAM 4

Block a

Block b:

- Take one (1) 1 $\frac{5}{8}$ " x 1 $\frac{5}{8}$ " square from fabrics **B** and **D**.

HST (Half Square Triangles):

- Align them face to face. Draw a diagonal line and stitch at 1/4" from each side of the line. Cut following the drawn line. Press open the resulting HST.

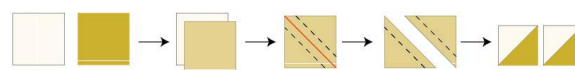


DIAGRAM 5

- Take two (2) 2½" x 1½" rectangles from fabric **D** and join them to the HSTs to make the following strip:



DIAGRAM 6

- Take one (1) 1½" x 6½" rectangle from fabric **A** and one (1) 6½" x 1½" from fabric **D**.

- Join them to the previous strip following Diagram 7.

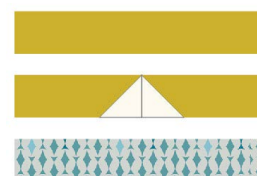


DIAGRAM 7

- Take tow (2) 3½" x 3½" squares from fabric **A**. Join them to Block b using the corner square triangle method.

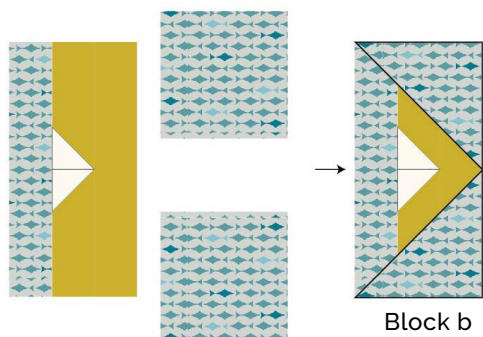


DIAGRAM 8

- Take Block a, Block b, and one (1) $1\frac{1}{2}$ " x $6\frac{1}{2}$ " rectangle from fabric **A**. Join them.

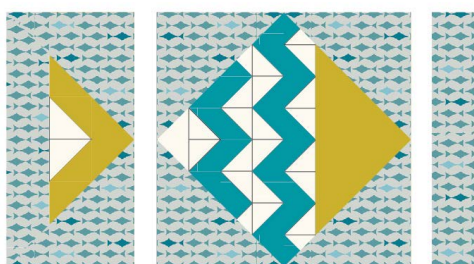


DIAGRAM 9

- Take two (2) $10\frac{1}{2}$ " x 2" rectangles from fabric **A** and join them to the top and bottom of the block.
- Trim the block to $9\frac{1}{2}$ " x $9\frac{1}{2}$ ".

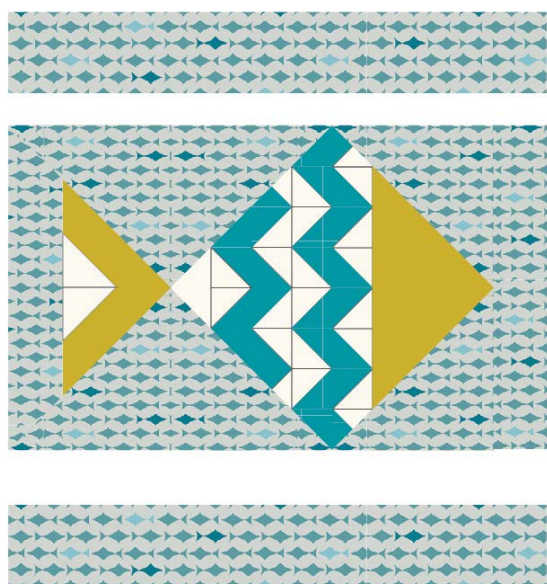


DIAGRAM 10

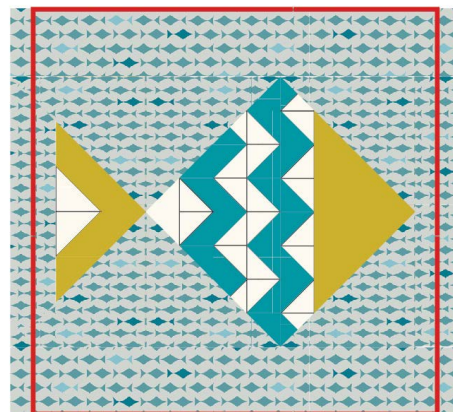


DIAGRAM 11

QUILT ASSEMBLY

- Place BACKING FABRIC on a large surface wrong side up. Stretch it with masking tape against that surface.
- Place BATTING on top of backing fabric.
- Place TOP on top of the batting with right side facing up. Smooth away wrinkles using your hands.
- Pin all layers together and baste with basting thread, using long stitches. You can also use safety pins to join the layers.
- Machine or hand quilt starting at the center and working towards the corners. Remember that quilting motifs are a matter of personal preference. Have fun choosing yours!
- After you finished, trim excess of any fabric or batting, squaring the quilt to proceed to bind it.

XXXXXXXXXXXXXXXXXXXXXXXXXXXXXXXXXXXX

Congratulations
& enjoy

XXXXXXXXXXXXXXXXXXXXXXXXXXXXXXXXXXXX



artgalleryfabrics.com

NOTE: While all possible care has been taken to ensure the accuracy of this pattern, We are not responsible for printing errors or the way in which individual work varies. Please read instructions carefully before starting the construction of this quilt. If desired, wash and iron your fabrics before starting to cut.

© 2019 Courtesy of Art Gallery Quilts LLC. All Rights Reserved.