



Eight Pointed Star Block





Quilt BLOCK collection

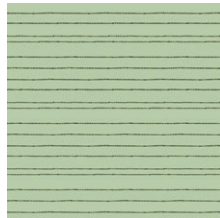
For More Block Tutorials :
<http://bit.ly/AGFquiltblockcollectionplaylist>



FABRICS DESIGNED BY ALEXANDRA BORDALLO



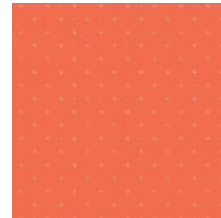
DWM-45600
THE MEADOW FELLOWS



DWM-45601
DEW'S CLOTH-LINE



DWM-45602
JARS O' BUGS



DWM-45603
STARRY ORANGE YOU



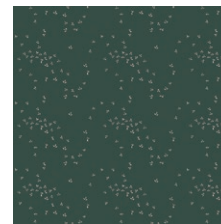
DWM-45604
GLOWLY BOSQUE



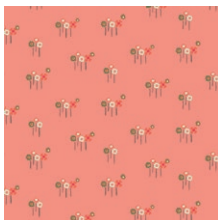
DWM-45605
PLAYFUL MINI BUNTING



DWM-45606
MOSS'S SNAIL MAIL



DWM-45607
FLY NIGHT SKY



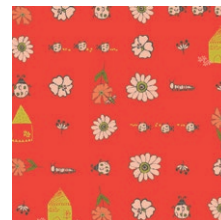
DWM-45608
DAISY BUTTON BUDS



DWM-45609
PHYSIOGNOMIES



DWM-45610
GNOMES' MUSHROOM HOMES



DWM-45611
BUGGY & POSY



FABRIC REQUIREMENTS

Fabric A	DWM-45600
Fabric B	DWM-45606
Fabric C	DWM-45611
Fabric D	DWM-445610
Fabric E	DWM-45605

CUTTING DIRECTIONS

One (1) 4 1/2" squares from Fabric **A**

Eight (8) 2 7/8" squares from Fabric **B**

Four (4) 4 1/2" squares from Fabric **D**

One (1) 5 1/4" square from Fabric **C** and **D**

Four (4) 4 1/2" squares from Fabric **E**

CONSTRUCTION

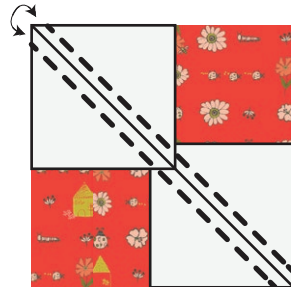
Sew all rights sides together with 1/4" seam allowance.

- Draw diagonal lines on the wrong side of your 2 7/8" squares from Fabric **B** from corner to corner with a fabric marking pen.
- Take a 5 1/4" x 5 1/4" square from Fabric **C** and **D** and eight (8) 2 7/8" x 2 7/8" squares from Fabric **B**. These are the pieces you will need to create eight flying geese units.
- Place two (2) 2 7/8" x 2 7/8" squares at each corner of your 5 1/4" x 5 1/4" square. Make sure right sides are together and the diagonal lines match up to make a straight line.
- Sew 1/4" from the diagonal line on each side of the line. Cut piece on the diagonal line you marked.

Draw Diagonal Line



Sew Here



Cut Here

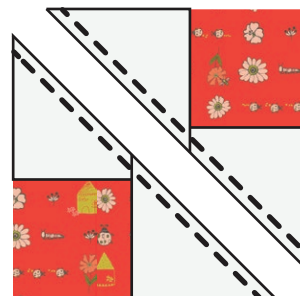
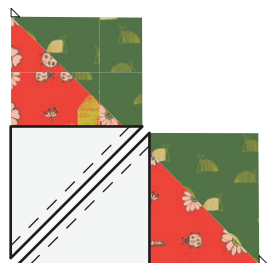
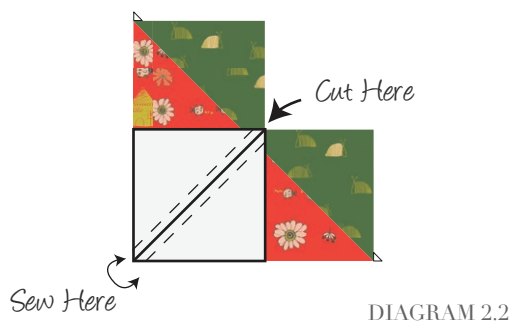


DIAGRAM 1

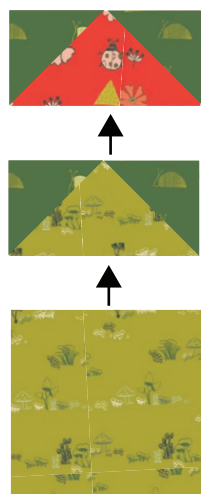
- Press seams toward Fabric **B**. Now place your 2 7/8" x 2 7/8" rectangle from Fabric **B** at the lower corner of your pieces. Sew on each side of the diagonal line you marked at 1/4". Cut piece on diagonal line.



DIAGRAM 2.1



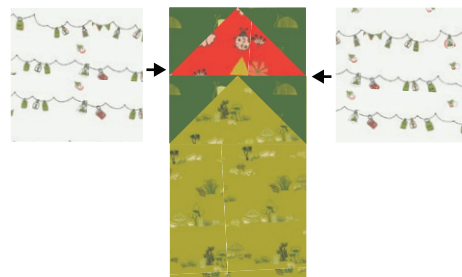
- Press your flying geese open and trim to $2\frac{1}{2}" \times 4\frac{1}{2}"$.
- Sew a your flying geese into pairs like this and then sew a $4\frac{1}{2}"$ square from Fabric D to the end. Create four of these units with your remaining pieces.



- Sew two of these units to each side of your 4 1/2" fussy cut square from Fabric **A** to create the center strip of your block.



- Sew a 4 1/2" square from Fabric **E** to each side of your remaining flying geese units to create your side rows.



- Sew your side rows to each side of your middle strip.



DIAGRAM 6

- Trim your block to 11 1/2" x 11 1/2" making sure to leave 1/4" seam allowance and your Eight Pointed Star block is complete!



DIAGRAM 7

XXXXXXXXXXXXXXXXXXXXXXXXXXXXXXXXXXXX

*Congratulations
& enjoy*

XXXXXXXXXXXXXXXXXXXXXXXXXXXXXXXXXXXX



artgalleryfabrics.com

NOTE: While all possible care has been taken to ensure the accuracy of this pattern, We are not responsible for printing errors or the way in which individual work varies. Please read instructions carefully before starting the construction of this quilt. If desired, wash and iron your fabrics before starting to cut.