

# CHECK





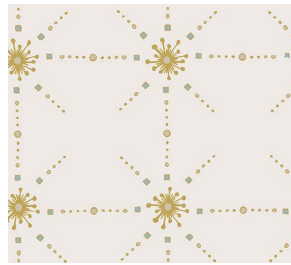
# CHECK

DESIGNED BY AGF STUDIO

## Merry & Bright COLLECTIVE



LTO-8236  
BE MERRY  
*by Amy Sinibaldi*



FUS-SK-1304  
FROM WITHIN SPARKLER  
*by Maureen Cracknell*



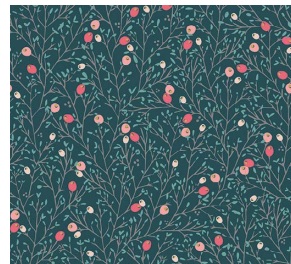
LTO-8234  
SEASON CAROLS  
*by Amy Sinibaldi*



LMB-28733  
VALLEY VIEW ECHO  
*by Bonnie Christine*



LTO-8237  
BOWTIED  
*by Amy Sinibaldi*



LTO-8231  
WINTERBERRY SPICE  
*by Amy Sinibaldi*



HRT-85303  
PINETRE DAYBREAK  
*by Pat Bravo*



FCD-77154  
PIXIE DUST SPARK  
*by Maureen Cracknell*



LVS-48808  
COMPASSION RUBY  
*by Maureen Cracknell*



FUS-SK-1309  
DOILAND GLOSS SPARKLER  
*by Katarina Roccella*



FINISHED SIZE | 15" x 15"

Fabric <b>A</b>	LTO-8231	⅓ yd.
Fabric <b>B</b>	PE-471	⅓ yd.
Fabric <b>C</b>	LVS-48808	⅓ yd.
Fabric <b>D</b>	FCD-77154	⅓ yd.
Fabric <b>E</b>	LTO-8234	⅓ yd.
Fabric <b>F</b>	LTO-8236	⅓ yd.
Fabric <b>G</b>	DEN-L-4000	½ yd.

*1/4" seam allowances are included.  
WOF means width of fabric.*

- One (1) 24" x 1½" strips from fabrics **A**, **B**, **D**, and **E**.
- Two (2) 15½" x ¾" strips from fabrics **C** and **F**.
- Two (2) 15½" x 15½" squares from fabric **G**.

*Sew all rights sides together with ¼" seam allowance.*

- Make the following strip sets:
- Strip set 1: **AB**
- Strip set 2: **DE**
- Sub-cut each strip set into fifteen (15)  $1\frac{1}{2}$ " x  $2\frac{1}{2}$ " rectangles and then join the resulting pieces into a check double strip.
- For fabric placement and attachment follow Diagram 1.



- Join the two (2) 15½" x ¾" strips from fabric **C** to strip set 1, and the two (2) 15½" x ¾" strips from fabric **F** to strip set 2.



- Appliqué the resulting strips at  $1\frac{1}{4}$ " from the edge of each  $15\frac{1}{2}$ " x  $15\frac{1}{2}$ " square from fabric **G**. Then finish the edge of the squares with a baby hem.





[artgalleryfabrics.com](http://artgalleryfabrics.com)

NOTE: While all possible care has been taken to ensure the accuracy of this pattern, We are not responsible for printing errors or the way in which individual work varies. Please read instructions carefully before starting the construction of this quilt. If desired, wash and iron your fabrics before starting to cut.