

Wish

Pillow



FREE PATTERN

XXXXXXXXXXXXXXXXXXXX



Wish Pillow

DESIGNED BY AGF STUDIO

Merry & Bright
COLLECTIVE



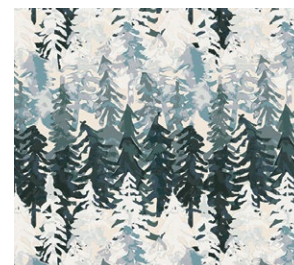
LTO-8236
BE MERRY
by Amy Sinibaldi



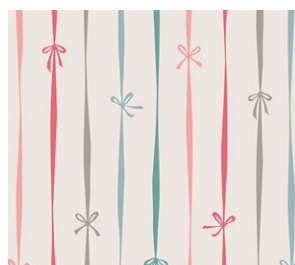
FUS-SK-1304
FROM WITHIN SPARKLER
by Maureen Cracknell



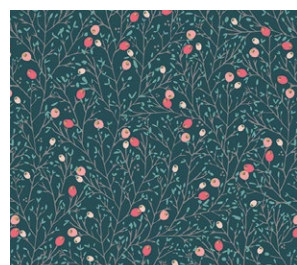
LTO-8234
SEASON CAROLS
by Amy Sinibaldi



LMB-28733
VALLEY VIEW ECHO
by Bonnie Christine



LTO-8237
BOWTIED
by Amy Sinibaldi



LTO-8231
WINTERBERRY SPICE
by Amy Sinibaldi



HRT-85303
PINETRE DAYBREAK
by Pat Bravo



FCD-77154
PIXIE DUST SPARK
by Maureen Cracknell



LVS-48808
COMPASSION RUBY
by Maureen Cracknell



FUS-SK-1309
DOILAND GLOSS SPARKLER
by Katarina Roccella



PE-463
ZAMBIA STONE



Wish Pillow

FINISHED SIZE | 21" x 21"

FABRIC REQUIREMENTS

Fabric A	LTO-8236	$\frac{7}{8}$ yd.
Fabric B	LTO-8234	$\frac{3}{8}$ yd.
Fabric C	FUS-SK-1304	$\frac{1}{4}$ yd.
Fabric D	LMB-28733	$\frac{1}{4}$ yd.
Fabric E	HRT-85303	$\frac{1}{4}$ yd.
Fabric F	FCD-77154	$\frac{1}{4}$ yd.
Fabric G	LTO-8231	1 yd.

CUTTING DIRECTIONS

$\frac{1}{4}$ " seam allowances are included.
WOF means width of fabric.

Fabric A

- Cut two (2) $12\frac{1}{2} \times 36\frac{1}{2}$ strips
- Cut two (2) $2\frac{1}{2} \times 36\frac{1}{2}$ strips

Fabric B

- Cut four (4) $2\frac{1}{2} \times 36\frac{1}{2}$ strips

Fabric C

- Cut two (2) $2\frac{1}{2} \times 36\frac{1}{2}$ strips

Fabric D

- Cut two (2) $2\frac{1}{2} \times 36\frac{1}{2}$ strips

Fabric E

- Cut two (2) $2\frac{1}{2} \times 36\frac{1}{2}$ strips

Fabric F

- Cut two (2) $2\frac{1}{2} \times 36\frac{1}{2}$ strips

Fabric G

- Cut two (2) $23\frac{1}{2} \times 23\frac{1}{2}$ Squares

CONSTRUCTION

Sew all rights sides together with $\frac{1}{4}$ " seam allowance.

- Start by sewing the stripes together in the order ABCDEAFB. Repeat this step one more time.

Sew

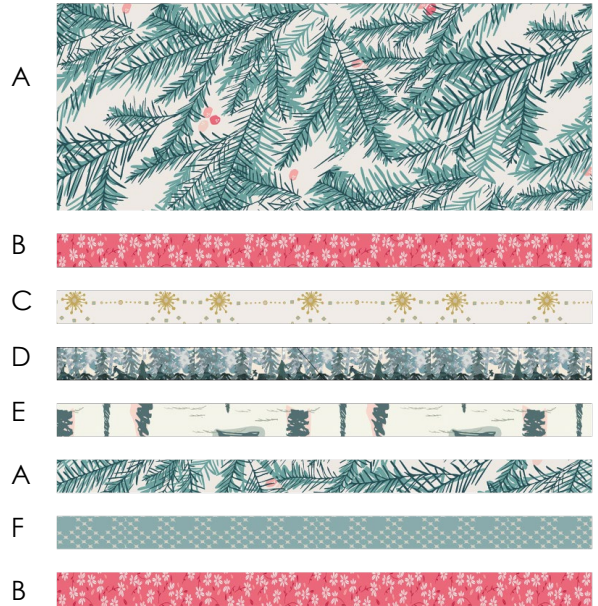


DIAGRAM 1

- Once you have the two blocks sewn, cut a 45 degree angle from the top corner of the block, repeat the same step with the other block, but in the opposite direction (See Diagram below for reference).

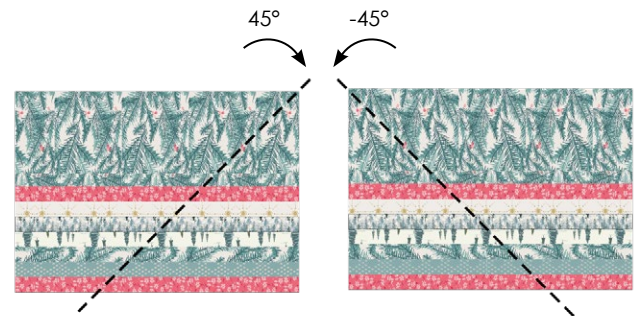


DIAGRAM 2

- Cut and set the left over aside.

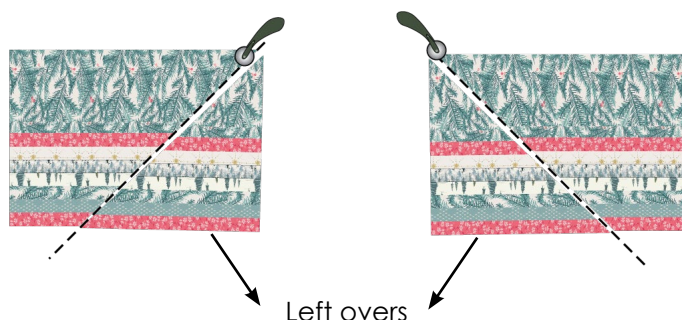


DIAGRAM 3

- Sew the two blocks together by the side where you cut the striped block

Sew

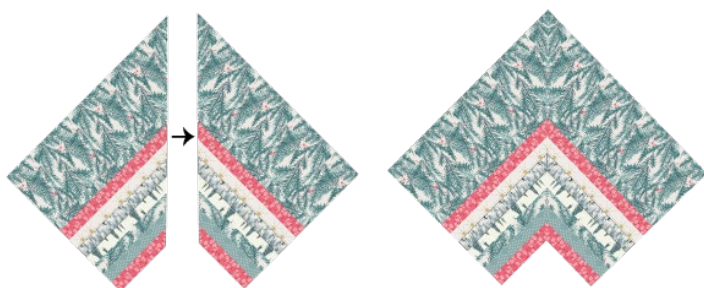


DIAGRAM 4

- Take the tree template, place it on top the 21 1/2" X 21 1/2" square from fabric G, and trace it.



DIAGRAM 5

- Place the striped sewn block facing right side up under the 21 1/2" X 21 1/2" square from fabric G, and batting under it.

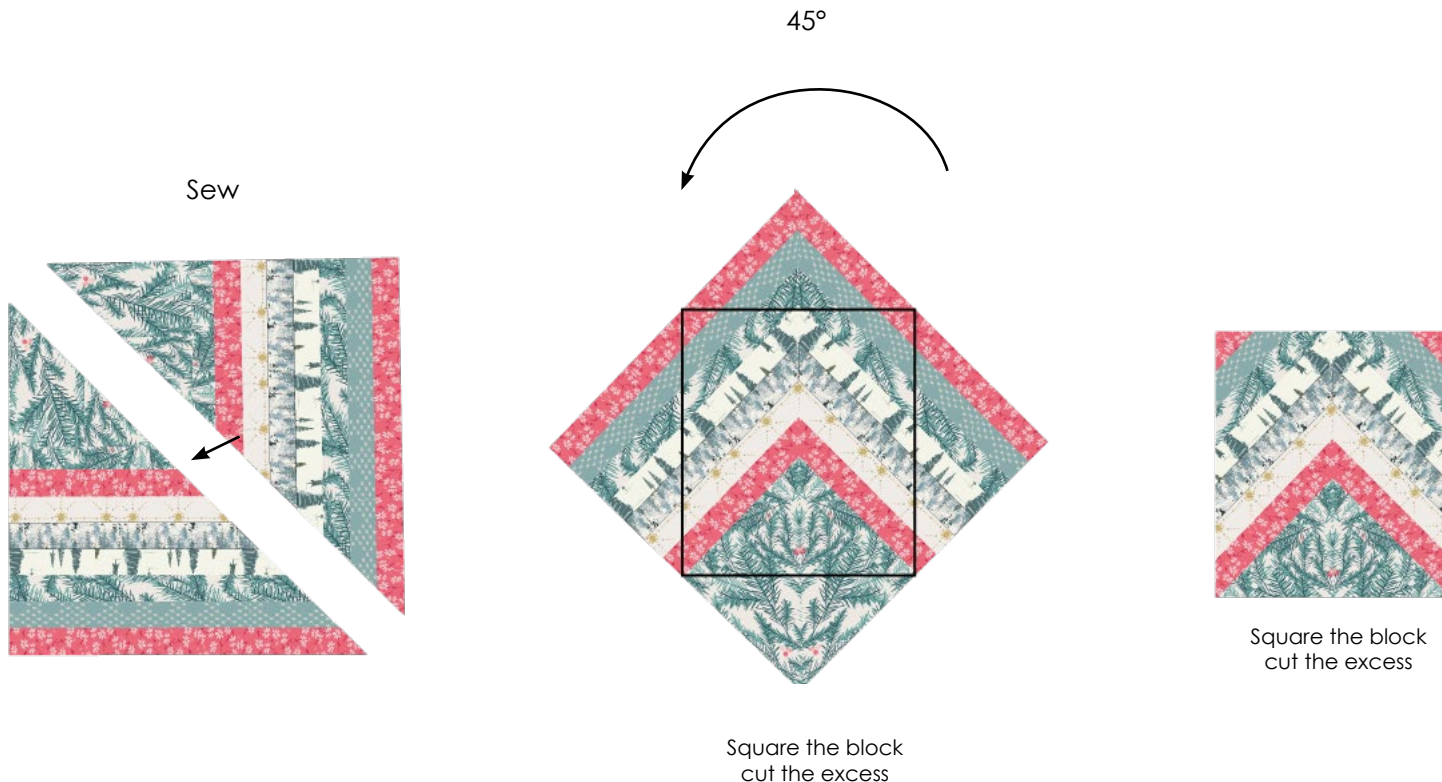
- Pin all the edges and sew on the traced part. Quilt as shown on diagram below.
- Start cutting the top layer to reveal the colors of the block.
- Trim all the edges to a 21 1/2" X 21 1/2" .



DIAGRAM 4



Take the left overs and sew then together, rotate the block on point 45° to the left and square it and cut the excess. That will give you a second pillow.



PILLOW BACKING

Sew all rights sides together with 1/4" seam allowance. Press open.

- To make a envelope back for your pillow cut two (2) 21½" x 17" rectangles and fold one 17" side on each rectangle in 1/2" and press and then fold another 1/2" and press.
- Top stitch as close to the edge as possible. Place rectangles right side together on top of each other to the front of your pillow and stitch all the way around your pillow at 1/4" seam allowance.
- Clip corners at seam allowance and flip piece to the right side of the fabric.
- Fill pillow with a 21 x 21" pillow form and enjoy!



FEEL THE DIFFERENCE

artgalleryfabrics.com

NOTE: While all possible care has been taken to ensure the accuracy of this pattern, We are not responsible for printing errors or the way in which individual work varies. Please read instructions carefully before starting the construction of this quilt. If desired, wash and iron your fabrics before starting to cut.

© 2019 Courtesy of Art Gallery Quilts LLC. All Rights Reserved.

