



seasonal runner



seasonal runner

DESIGNED BY AGF STUDIO

Merry & Bright

COLLECTIVE



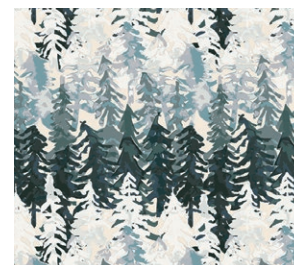
LTO-8236
BE MERRY
by Amy Sinibaldi



FUS-SK-1304
FROM WITHIN SPARKLER
by Maureen Cracknell



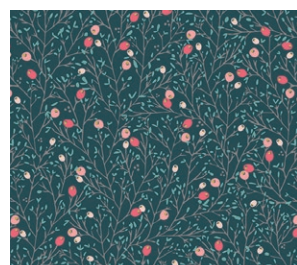
LTO-8234
SEASON CAROLS
by Amy Sinibaldi



LMB-28733
VALLEY VIEW ECHO
by Bonnie Christine



LTO-8237
BOWTIED
by Amy Sinibaldi



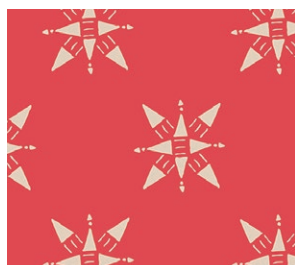
LTO-8231
WINTERBERRY SPICE
by Amy Sinibaldi



HRT-85303
PINETRE DAYBREAK
by Pat Bravo



FCD-77154
PIXIE DUST SPARK
by Maureen Cracknell



LVS-48808
COMPASSION RUBY
by Maureen Cracknell



FUS-SK-1309
DOILAND GLOSS SPARKLER
by Katarina Roccella





FINISHED SIZE | 18" x 45"

FABRIC REQUIREMENTS

Fabric A	LTO-8236	¼ yd.
Fabric B	FUS-SK-1304	¼ yd.
Fabric C	LTO-8234	⅓ yd.
Fabric D	LMB-28733	⅓ yd.
Fabric E	LTO-8231	⅓ yd.
Fabric F	PE-427	⅓ yd.
Fabric G	PE-465	⅓ yd.
Fabric H	DE-L-4000	¾ yd.

BINDING FABRIC
LMB-28733 **D** (included)

BACKING FABRIC
FCD-77154 - 3/4 YD (suggested)

CUTTING DIRECTIONS

¼" seam allowances are included.
WOF means width of fabric.

Three (3) 2⅜" x WOF strips from fabrics **A** & **B**.
Sub-cut into forty (40) 2⅜" squares.

Thirty (30) 2⅜" squares from fabrics **C** & **E**.

Twenty (20) 2" squares from fabrics **C** & **E**.

Twelve (12) 2⅜" squares from fabrics **F** & **G**.

Forty (40) 3½" x 2" rectangles from fabric **H**.

Forty (40) 2⅜" squares from fabric **H**.

Forty (40) 2" squares from fabric **H**.

CONSTRUCTION

Sew all rights sides together with ¼" seam allowance.

- Start by taking all the 2⅜" squares from fabrics **A B C E F G** & **H**.
- Make the following HST combinations with the 2⅜" squares, forty (40) **AE**, **AH**, **BC**, **BH** and twenty (20) **CF** and **CG**.
- Set aside

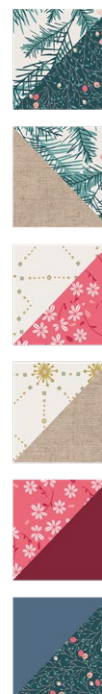


DIAGRAM 1

- To build one of the blocks take four (4) **AE**, **AH**, **BC**, **BH**, two (2) **CF** and **CG**, four (4) 3½" x 2" rectangles from fabric **H** and four (4) 2" squares from fabric **H**.
- Arrange the pieces as shown in the diagram below, make six rows and start sewing them together.

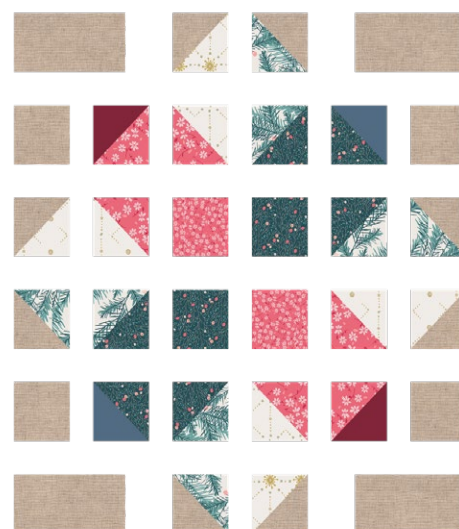


DIAGRAM 2

- Attach the rows together.



DIAGRAM 3

- Make a total of ten blocks for this table runner.
- Attach them together in two rows with five blocks each.



DIAGRAM 4

QUILT ASSEMBLY

Sew rights sides together.

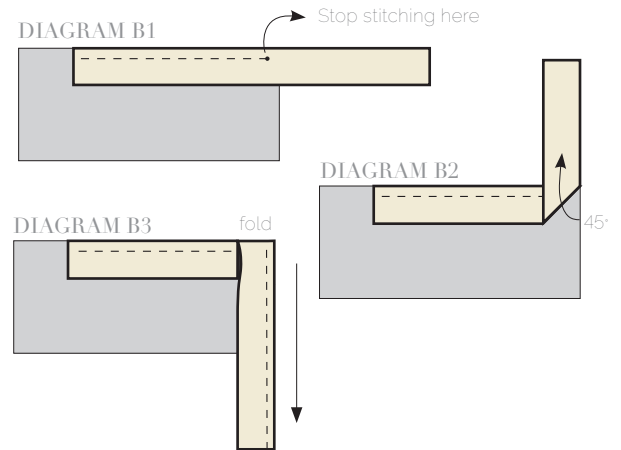
- Place BACKING FABRIC on a large surface wrong side up. Stretch it with masking tape against that surface.
- Place BATTING on top of backing fabric.
- Place TOP on top of the batting with right side facing up. Smooth away wrinkles using your hands.
- Pin all layers together and baste with basting thread, using long stitches. You can also use safety pins to join the layers.
- Machine or hand quilt starting at the center and working towards the corners. Remember that quilting motifs are a matter of personal preference. Have fun choosing yours!
- After you finished, trim excess of any fabric or batting, squaring the quilt to proceed to bind it.

BINDING

Sew rights sides together.

- Cut enough strips $1\frac{1}{2}$ " wide by the width of the fabric **D** to make a final strip 136" long. Start sewing the binding strip in the middle of one of the sides of the quilt, placing the strip right side down and leaving an approximated 5" tail. Sew with $\frac{1}{4}$ " seam allowance (using straight stitch), aligning the strip's raw edge with the quilt top's raw edge.
- Stop stitching $\frac{1}{4}$ " before the edge of the quilt (DIAGRAM B 1). Clip the threads. Remove the quilt from under the machine presser foot. Fold the strip in a motion of 45° and upward, pressing with your fingers (DIAGRAM B2). Hold this fold with your finger, bring the strip down in line with the next edge, making a horizontal fold that aligns with the top edge of the quilt (DIAGRAM B3). Start sewing at $\frac{1}{4}$ " of the border, stitching all the layers. Do the same in the four corners of the quilt.

- Stop stitching before you reach the last 5 or 6 inches. Cut the threads and remove the quilt from under the machine presser foot. Lay the loose ends of the binding flat along the quilt edge, folding the ends back on themselves where they meet. Press them together to form a crease. Using this crease as the stitching line, sew the two open ends of the binding with right sides together (you can help yourself marking with a pencil if the crease is difficult to see).
- Trim seam to $\frac{1}{4}$ " and press open. Complete the sewing. Turn binding to back of the quilt, turn raw edge inside and stitch by hand using blind stitch.



artgalleryfabrics.com

NOTE: While all possible care has been taken to ensure the accuracy of this pattern, We are not responsible for printing errors or the way in which individual work varies. Please read instructions carefully before starting the construction of this quilt. If desired, wash and iron your fabrics before starting to cut.

© 2019 Courtesy of Art Gallery Quilts LLC. All Rights Reserved.