

# Luminous

## Pillow

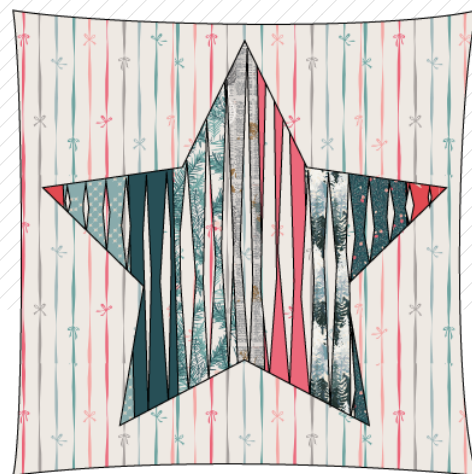




# Luminous Pillow

DESIGNED BY AGF STUDIO

## Merry & Bright COLLECTIVE



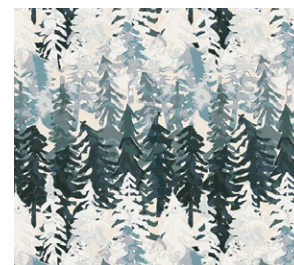
LTO-8236  
BE MERRY  
*by Amy Sinibaldi*



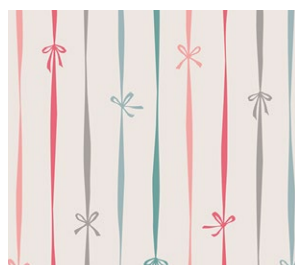
FUS-SK-1304  
FROM WITHIN SPARKLER  
*by Maureen Cracknell*



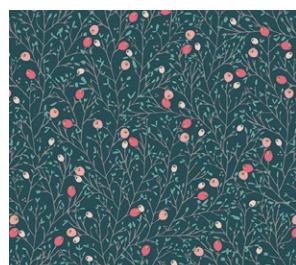
LTO-8234  
SEASON CAROLS  
*by Amy Sinibaldi*



LMB-28733  
VALLEY VIEW ECHO  
*by Bonnie Christine*



LTO-8237  
BOWTIED  
*by Amy Sinibaldi*



LTO-8231  
WINTERBERRY SPICE  
*by Amy Sinibaldi*



HRT-85303  
PINETRE DAYBREAK  
*by Pat Bravo*



FCD-77154  
PIXIE DUST SPARK  
*by Maureen Cracknell*



LVS-48808  
COMPASSION RUBY  
*by Maureen Cracknell*



FUS-SK-1309  
DOILAND GLOSS SPARKLER  
*by Katarina Roccella*



PE-463  
ZAMBIA STONE



# Luminous

## Pillow

FINISHED SIZE | 20" x 20"

### FABRIC REQUIREMENTS

Fabric <b>A</b>	LVS-48808	1/6 yd.
Fabric <b>B</b>	LTO-8231	1/6 yd.
Fabric <b>C</b>	LBM-28733	1/6 yd.
Fabric <b>D</b>	LTO-8234	1/6 yd.
Fabric <b>E</b>	FUS-SK-1309	1/6 yd.
Fabric <b>F</b>	LTO-8236	1/6 yd.
Fabric <b>G</b>	PE 463	1/6 yd.
Fabric <b>H</b>	FCD-77154	1/6 yd.
Fabric <b>I</b>	LTO-8237	1 yd.

### CUTTING DIRECTIONS

1/4" seam allowances are included.  
WOF means width of fabric.

#### Fabric **A**

- Cut one (1) 4 x 26" strip
- Cut one (1) 3 1/2 x 26" strip

#### Fabric **B**

- Cut one (1) 3 1/2 x 26" strip

#### Fabric **C**

- Cut one (1) 3 1/2 x 26" strip

#### Fabric **D**

- Cut one (1) 4 x 26" strip

#### Fabric **E**

- Cut one (1) 3 x 26" strip

#### Fabric **F**

- Cut one (1) 3 x 26" strip

#### Fabric **G**

- Cut one (1) 4 x 26" strip

#### Fabric **H**

- Cut one (1) 4 x 26" strip

#### Fabric **I**

- Cut one (1) 20 1/2" x 20 1/2" Square

### CONSTRUCTION

Sew all rights sides together with 1/4" seam allowance.

- Start by sewing the stripes together in the order ABCDEFGHA. Set aside

Sew

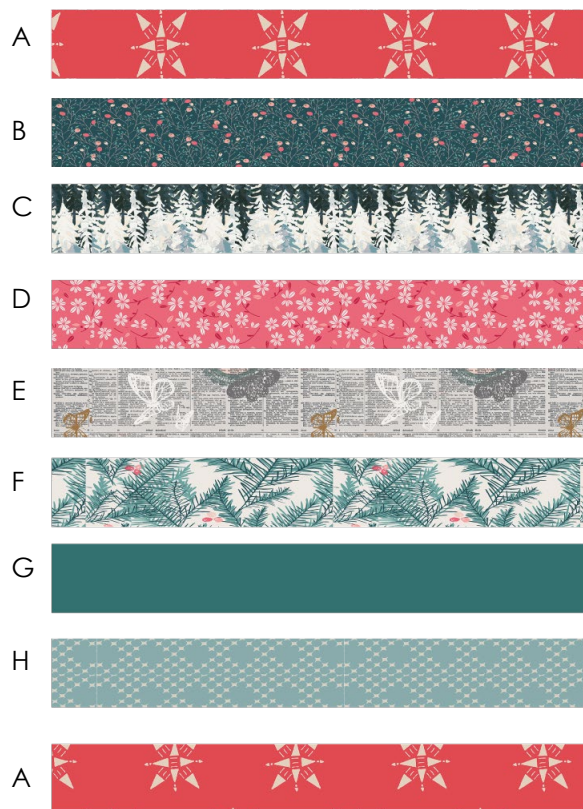


DIAGRAM 1

- Take the 20 1/2" x 20 1/2" Square from fabric I and place the star pattern on top of fabric I and trace it. (See Diagram 2 for reference.)



20½



Fabric I

20½



Fabric I

DIAGRAM 2

- Place the block sewn at the beginning, facing right side up under the 20½" x 20½" square from fabric I.
- Place batting under, pin the three layers it and sew around the star.
- Quilt inside the star parallel lines with ¼" or ½" distance in between each line. For this pillow we use ¼" distance in between each line. See Diagram below for reference.

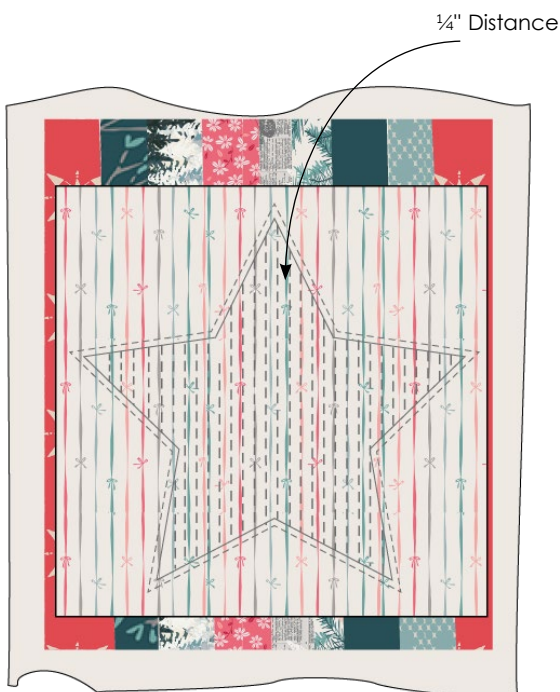


DIAGRAM 3

- Take scissors and start cutting the first layer (Fabric I) slowly in between the quilted lines. That will reveal parts of the striped block we sew at the beginning.
- Trim the edges to a 20½ x 20½.

Trim excess

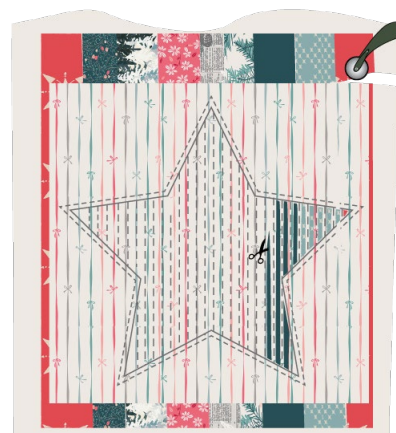


DIAGRAM 4

## PILLOW BACKING

*Sew all rights sides together with ¼" seam allowance. Press open.*

- To make a envelope back for your pillow cut two (2) 20½" x 16" rectangles and fold one 16" side on each rectangle in 1/2" and press and then fold another 1/2" and press.
- Top stitch as close to the edge as possible. Place rectangles right side together on top of each other to the front of your pillow and stitch all the way around your pillow at ¼" seam allowance.
- Clip corners at seam allowance and flip piece to the right side of the fabric.
- Fill pillow with a 20 x 20" pillow form and enjoy!



[artgalleryfabrics.com](http://artgalleryfabrics.com)

NOTE: While all possible care has been taken to ensure the accuracy of this pattern, We are not responsible for printing errors or the way in which individual work varies. Please read instructions carefully before starting the construction of this quilt. If desired, wash and iron your fabrics before starting to cut.

© 2019 Courtesy of Art Gallery Quilts LLC. All Rights Reserved.

