



Quilt BLOCK collection

Christmas Star Block





Quilt BLOCK collection

For More Block Tutorials :
<http://bit.ly/AGFquiltblockcollectionplaylist>

Merry & Bright COLLECTIVE



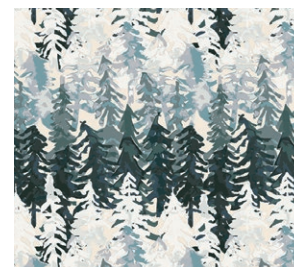
LTO-8236
BE MERRY
by Amy Sinibaldi



FUS-SK-1304
FROM WITHIN SPARKLER
by Maureen Cracknell



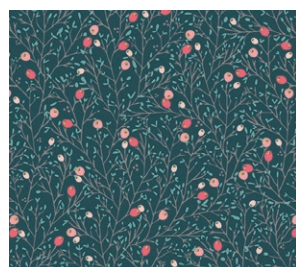
LTO-8234
SEASON CAROLS
by Amy Sinibaldi



LMB-28733
VALLEY VIEW ECHO
by Bonnie Christine



LTO-8237
BOWTIED
by Amy Sinibaldi



LTO-8231
WINTERBERRY SPICE
by Amy Sinibaldi



HRT-85303
PINETRE DAYBREAK
by Pat Bravo



FCD-77154
PIXIE DUST SPARK
by Maureen Cracknell



LVS-48808
COMPASSION RUBY
by Maureen Cracknell



FUS-SK-1309
DOILAND GLOSS SPARKLER
by Katarina Roccella



FINISHED SIZE | 16" x 16"

FABRIC REQUIREMENTS

Fabric A	FUS-SK-1309
Fabric B	LTO-8234
Fabric C	FUS-SK-1304
Fabric D	LTO-8231
Fabric E	FCD-77154

CUTTING DIRECTIONS

1/4" seam allowances are included.

- One (1) 4 1/2" square from Fabric **A (Fussy Cut)**
- Four (4) 2 1/2" squares from Fabric **A**
- Four (4) 2 1/2" x 4 1/2" strips from Fabric **A**
- Eight (8) 2 1/2" squares from Fabric **B**
- Eight (8) 2 1/2" x 4 1/2" strips from Fabric **C**
- Twenty (20) 2 1/2" squares from Fabric **D**
- One (1) 6 3/4" square from Fabric **A** and **D**
- Two (2) 6 3/4" squares from Fabric **E**
- Twelve (12) 2 1/2" squares from Fabric **E**

CONSTRUCTION

*Sew all rights sides together with 1/4" seam allowance.
HST means Half Square Triangle.*

- To create our HST's using the eight at a time method take both 6 3/4" square from Fabric **E** and draw diagonal lines with a fabric marking pen on both diagonals.
- Place right sides together to a 6 3/4" square from Fabric **A** and **D**, on each side of the line you drew sew at 1/4".
- Cut your piece on both diagonals and then cut your piece vertical and horizontally in half to reveal 8 **E/A** and **E/D** HST's.
- Trim your HST's to 2 1/2".

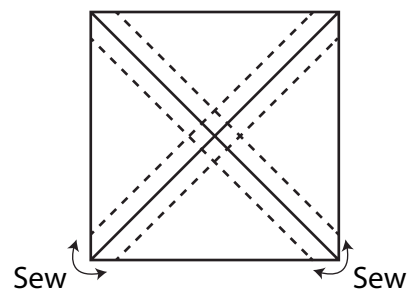


DIAGRAM 1

- To create your corner blocks arrange your HST's and 2 1/2" squares to create a unit that looks like the diagram below.
- Sew your unit into rows and sew your rows together matching up seams.
- Create four of these blocks.

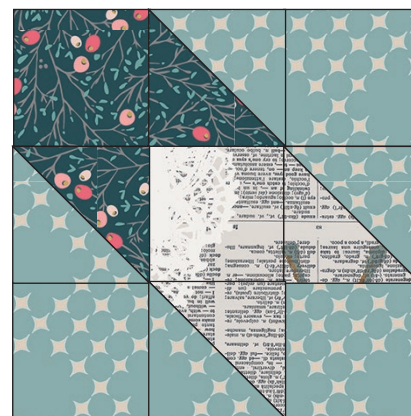
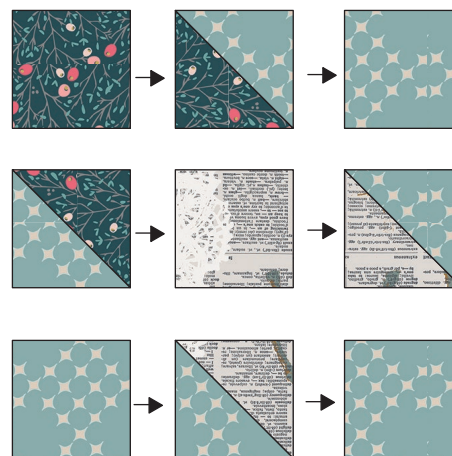


DIAGRAM 2

- To make your flying geese you will need your 2 $1\frac{1}{2}$ " x 4 $1\frac{1}{2}$ " strips from Fabric **A** and your 2 $1\frac{1}{2}$ " squares from Fabric **D**.
- Draw a diagonal line from corner to corner on the wrong side of all your 2 $1\frac{1}{2}$ " squares.
- Place a square to each corner of your 2 $1\frac{1}{2}$ " x 4 $1\frac{1}{2}$ " strip right sides together.
- Sew on the line you drew and trim your seam allowance to $\frac{1}{4}$ ".
- Repeat this same process to the other side of your strip. You will now have four flying geese units. (Diagram 3)



DIAGRAM 3

- To make your arrow units take two $2\frac{1}{2}$ " x $4\frac{1}{2}$ " strips from Fabric **C**.
- Take two $2\frac{1}{2}$ " squares from Fabric **B** and **D** and draw a line from corner to corner with a fabric making pen on the wrong side of the fabric.
- Place your squares in each corner following the diagram. Sew on the line you drew and trim your seam allowance to $\frac{1}{4}$ "



DIAGRAM 4



- Repeat this same process with your 2 1/2" squares from Fabric **D** and place them on the top of your strip.



DIAGRAM 5

- Press your seams in alternating directions and sew your pieces together to create one block. You will need four of these blocks.
- With your remaining 2 1/2" squares and strips create the rest of your blocks.
- Sew these units to each of your flying geese units.



DIAGRAM 6

- Now we have all the units to create our block.
- Place your units into rows following the block design and sew your rows together.



DIAGRAM 7

- Sew your rows together matching up seams and your Christmas Star Block is complete!



Congratulations
& enjoy



artgalleryfabrics.com

NOTE: While all possible care has been taken to ensure the accuracy of this pattern, We are not responsible for printing errors or the way in which individual work varies. Please read instructions carefully before starting the construction of this quilt. If desired, wash and iron your fabrics before starting to cut.

© 2019 Courtesy of Art Gallery Quilts LLC. All Rights Reserved.