



A vibrant, hand-quilted pinwheel is the central focus, resting on a white-painted wooden plank surface. The pinwheel is composed of eight triangular segments radiating from a central point. The segments feature a variety of patterns and colors: teal with white floral motifs, orange with small blue flowers, dark blue with a white geometric pattern, and solid dark blue. The pinwheel is positioned diagonally. In the upper left corner, there are delicate pink cherry blossom branches and a single pink heart. In the lower right corner, there are two more hearts, one pink and one red. The overall composition is bright and cheerful, with a rustic, handmade feel.



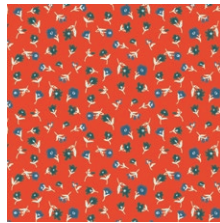


FABRICS DESIGNED BY SHARON HOLLAND

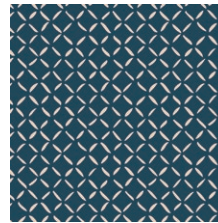
For More Block Tutorials :
<http://bit.ly/AGFquiltblockcollectionplaylist>



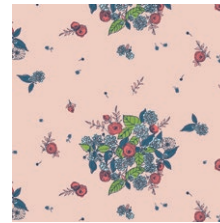
EVR-86550
BOUQUET MUSE



EVR-86551
CHERISHED WISHES



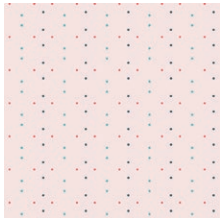
EVR-86552
CROSSED PATHS



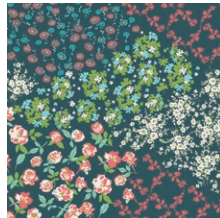
EVR-86553
PROMISES



EVR-86554
FLUTTER BUNDS



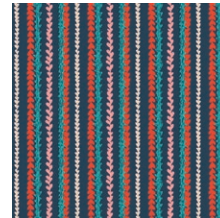
EVR-86555
DOTTED VEIL



EVR-86556
FLOWER KEEPER



EVR-86557
SUMMER'S DANCE



EVR-86558
FROM THE HEART



EVR-86559
SOMETHING BLUE



PE-465
DENIM BLUE



PE-467
NIGHT SEA



FEEL THE DIFFERENCE © 2019 Courtesy of Art Gallery Quilts LLC. All Rights Reserved.

FINISHED SIZE | 9" X 9"

FABRIC REQUIREMENTS

Fabric A	EVR-86559
Fabric B	EVR-86552
Fabric C	EVR-86557
Fabric D	EVR-86551
Fabric E	PE-465
Fabric F	PE-467

CUTTING DIRECTIONS

- Two (2) 4 1/2" squares from Fabric **A,B,C** and **E**
- One (1) 1 1/2" x WOF strips from Fabric **A** and **F**
- Two (2) 1 1/2" x WOF strips from Fabric **D**

CONSTRUCTION

Sew all rights sides together with 1/4" seam allowance.

- To make our HST's place your coordinating 4 1/2" squares from Fabric **C** and **E** and Fabric **A** and **B** right sides together.
- Draw a diagonal line on the wrong side of the fabric with a fabric marking pen from corner to corner.
- Sew on each side of the line at 1/4".
- Cut on the line you drew to reveal your HST's.

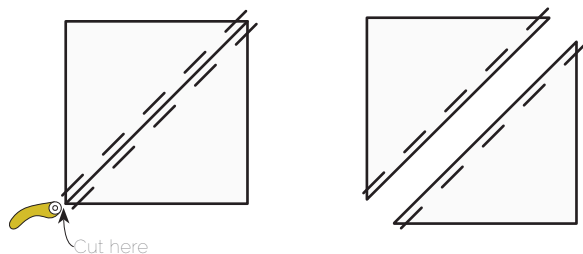


DIAGRAM 1

- XXXXXXXXXXXXXXXXXXXXXXXXXXXXXXXXXXXX
- Press your HST's open and cut them in half on the diagonal.
 - You will only need four of each set of triangles.



DIAGRAM 2

- Make sure you have four triangles with Fabric **C** on the left and Fabric **E** on the right. Also make sure you have four triangles with Fabric **B** on the left and Fabric **A** right.

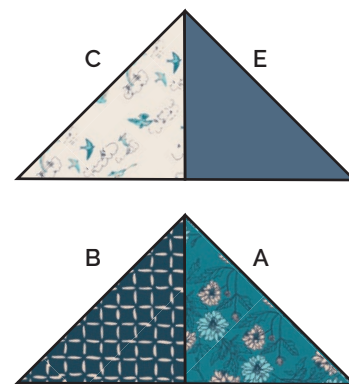


DIAGRAM 3

- To create your diagonal strip sets sub cut eight 5 1/2" strips from your WOF strips from Fabric **D**.
- Also sub cut four 5 1/2" strips from your WOF strips from Fabric **A** and **F**.
- Lay out your 5 1/2" strips from Fabric **D** and place your 5 1/2" strips from **F** right side together at a 90 degree angle.
- Draw a line with a fabric marking pen from the left corner to the top right corner of your strip and sew on the line you drew to create your diagonal seam.
- Repeat this same process with your remaining 5 1/2" strips from Fabric **A** and **D**.
- Trim your seam allowances to 1/4" and press your strips open.

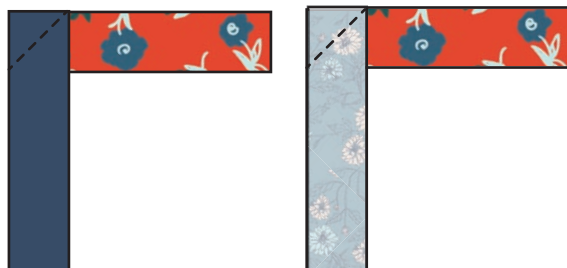


DIAGRAM 4

- Take two different triangle pieces and sew a diagonal strip unit to each triangle matching up seams.
- Sew your pieces together at 1/4"
- Now sew your units together to create one of four blocks needed to create this block.
- Fold your pieces in half to create a crease mark. Line up your crease marks and sew your pieces together at 1/4".
- Press your piece open and trim down your piece to 5"

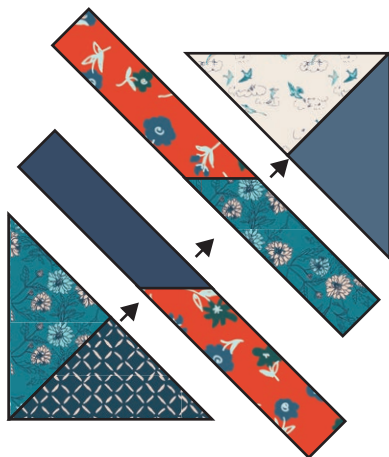


DIAGRAM 5

- Create three more blocks following this method.
- To create your block, lay your pieces out following the block design.
- Sew your blocks into rows and sew your rows together matching up seams and your Twisted Spools block is complete!

*Congratulations
& enjoy*



artgalleryfabrics.com

NOTE: While all possible care has been taken to ensure the accuracy of this pattern, We are not responsible for printing errors or the way in which individual work varies. Please read instructions carefully before starting the construction of this quilt. If desired, wash and iron your fabrics before starting to cut.