

X  
X  
X  
X  
X  
X  
X  
X  
X  
X  
X  
X

## A top-down view of a picnic spread on a wooden table. The spread includes a vase of yellow roses and baby's breath, a white lantern, a jar of honey, a jar of infused oil, a loaf of bread, and a plate of salami and a jammed cookie. A colorful geometric patterned cloth is under the items.

XXXXXXXXXXXXXXXXXXXX





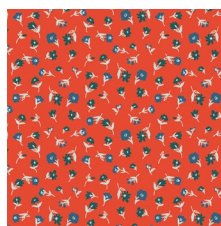
# Petal *beat*

Everlasting

FABRICS DESIGNED BY SHARON HOLLAND



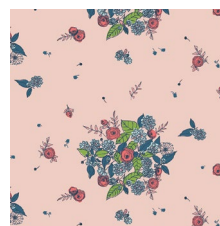
EVR-86550  
BOUQUET MUSE



EVR-86551  
CHERISHED WISHES



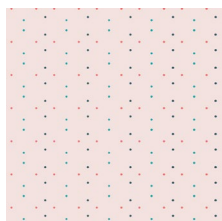
EVR-86552  
CROSSED PATHS



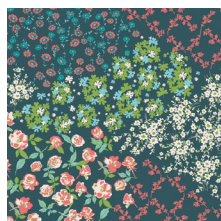
EVR-86553  
PROMISES



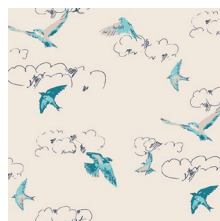
EVR-86554  
FLUTTER BUNDS



EVR-86555  
DOTTED VEIL



EVR-86556  
FLOWER KEEPER



EVR-86557  
SUMMER'S DANCE



EVR-86558  
FROM THE HEART



EVR-86559  
SOMETHING BLUE



# Petal Beat

FINISHED SIZE | 10" X 35"

## FABRIC REQUIREMENTS

Fabric **A** EVR-86550  $\frac{1}{3}$  yd.  
 Fabric **B** EVR-86555  $\frac{1}{4}$  yd.  
 Fabric **C** EVR-86556  $\frac{1}{4}$  yd.  
 Fabric **D** DEN-L-4000  $\frac{1}{4}$  yd.

### BACKING FABRIC

EVR-86557  $\frac{1}{3}$  yds. *(Suggested)*

## CUTTING PREPARATIONS

Twenty eight (28)  $3\frac{3}{8}$ " squares from fabric **A**.

Fourteen (14)  $3\frac{3}{8}$ " squares from fabric **B**.

Fourteen (14)  $3\frac{3}{8}$ " squares from fabric **C**.

Fifty-six (56) template pieces from fabric **D**.

## CONSTRUCTION

*Sew all rights sides together with  $\frac{1}{4}$ " seam allowance.*

- Take fourteen  $3\frac{3}{8}$ " squares from fabric **A** and all the  $3\frac{3}{8}$ " squares from fabric **B**.
- Make a total of twenty eight HST **AB**.
- Set aside.



DIAGRAM 1

XXXXXXXXXXXXXXXXXXXXXXXXXXXXXXXXXXXX

- Take fourteen  $3\frac{3}{8}$ " squares from fabric **A** and all the  $3\frac{3}{8}$ " squares from fabric **C**.
- Make a total of twenty eight HST **AC**.



DIAGRAM 2

- Take all the fifty six linen templates and applique on top of each of the HST.
- Use steam-A-seam and align the template on top of the diagonal line of each of the HST.
- Top stitch the petal to hold it on place.

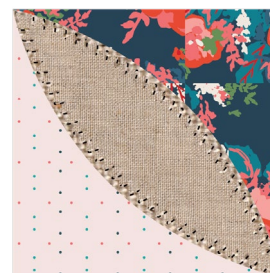


DIAGRAM 3

- Arrange the HST alternating **AB** and **AC** combinations.
- Make four rows with fourteen HST each as shown in the diagram below.
- Sew them together.

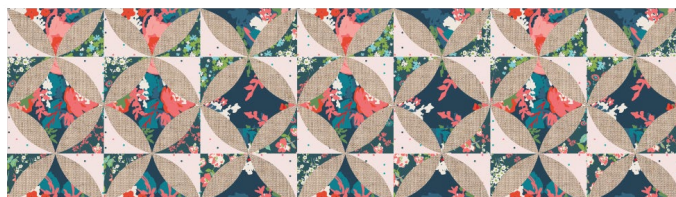
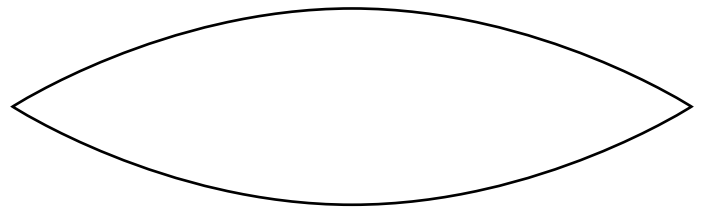


DIAGRAM 4

## TEMPLATE

- Cut a piece of batting the same size as the table runner top, place the table runner on top and quilt as desired.
- Take the backing fabric and place it on top of the table runner top both facing right sides of fabric.
- Sew all the way around leaving an opening of about 2" to be able to turn the table runner inside out.
- Turn the table runner inside out, iron it and hand stitch the 2" opening.
- top sticht all the way around.



XXXXXXXXXXXXXXXXXXXXXXXXXXXXXXXXXXXX

*Congratulations  
& enjoy*

XXXXXXXXXXXXXXXXXXXXXXXXXXXXXXXXXXXX



[artgalleryfabrics.com](http://artgalleryfabrics.com)

NOTE: While all possible care has been taken to ensure the accuracy of this pattern, We are not responsible for printing errors or the way in which individual work varies. Please read instructions carefully before starting the construction of this quilt. If desired, wash and iron your fabrics before starting to cut.