

# DAWN to DUSK





# DAWN to DUSK

QUILT DESIGNED BY MAUREEN CRACKNELL

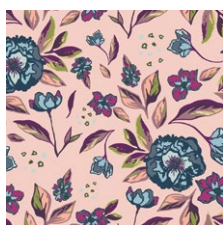
## Mystical LAND

FABRICS DESIGNED  
BY MAUREEN CRACKNELL



COLOR OPTION

ALBA GLISTEN



MSL-13960  
ENCHANTED FLORA ABLUSH



MSL-13961  
BOKEH LATTICE CREAM



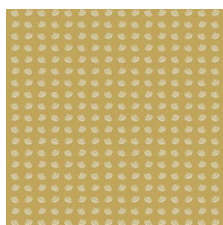
MSL-13962  
MIRROR LAKE ROSE



MSL-13963  
ELIXIR PAEONIA



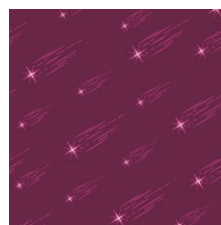
MSL-13964  
LUNAR ILLUSION CRYSTAL



MSL-13965  
SECRET SEEDS SOLAR



MSL-13966  
REFRACTIONS ORCHID



MSL-13967  
ASTRAL RAIN POTION

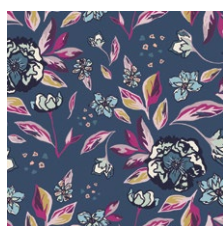


MSL-13968  
MAGIC FAUNA MIRAGE

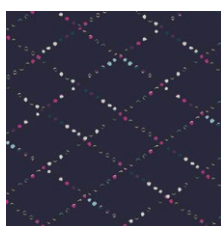


MSL-13969  
SHRUB CHARM SAGE

IRIS SPARKLE



MSL-23960  
ENCHANTED FLORA ABLUE



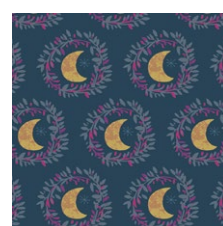
MSL-23961  
BOKEH LATTICE GLOW



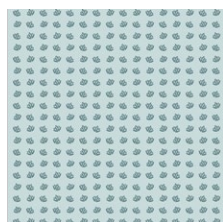
MSL-23962  
MIRROR LAKE MOONLIT



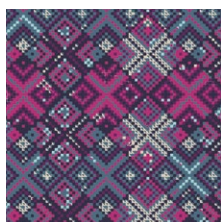
MSL-23963  
ELIXIR LAVANDULA



MSL-23964  
LUNAR ILLUSION FLAME



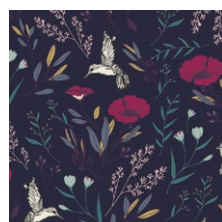
MSL-23965  
SECRET SEEDS WHISPER



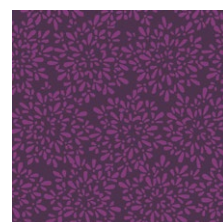
MSL-23966  
REFRACTIONS VIOLET



MSL-23967  
ASTRAL RAIN CLUSTER



MSL-23968  
MAGICAL FAUNA MYSTIQUE



MSL-23969  
SHRUB CHARM CURRANT



FEEL THE DIFFERENCE © 2019 Courtesy of Art Gallery Quilts LLC. All Rights Reserved.

# DAWN to DUSK

FINISHED SIZE | 72" x 72"

## FABRIC REQUIREMENTS

Fabric <b>A</b>	MLS-13965	5/8 yd.
Fabric <b>B</b>	MLS-13963	1/4 yd.
Fabric <b>C</b>	MLS-23963	1/4 yd.
Fabric <b>D</b>	MLS-23969	1/4 yd.
Fabric <b>E</b>	MLS-23965	1/4 yd.
Fabric <b>F</b>	MLS-23966	5/8 yd.
Fabric <b>G</b>	MLS-13966	5/8 yd.
Fabric <b>H</b>	MLS-23964	7/8 yd.
Fabric <b>I</b>	MLS-13964	7/8 yd.
Fabric <b>J</b>	MLS-13960	7/8 yd.
Fabric <b>K</b>	MLS-13961	1 yd.
Fabric <b>L</b>	MLS-23961	1 yd.

### BACKING FABRIC

MLS-23967 4 1/2 yds. *(Suggested)*

### BINDING FABRIC

MLS-13965 (Fabric **A**) *(Included)*

## CUTTING DIRECTIONS

1/4" seam allowances are included.  
WOF means width of fabric.

- Twelve (12) 4 7/8" x 4 7/8" squares from fabric **A**.
- Six (6) 4 7/8" x 4 7/8" squares from fabrics **B, C, D, E, H, I, J, K, and L**.
- Three (3) 4 7/8" x 4 7/8" squares from fabrics **F and G**.
- Twelve (12) 8 1/2" x 2 1/2" rectangles from fabrics **F and G**.
- Twelve (12) 6 1/2" x 2 1/2" rectangles from fabrics **F and G**.
- Six (6) 4 1/2" x 2 1/2" rectangles from fabrics **F and G**.
- Six (6) 2 1/2" x 2 1/2" rectangles from fabrics **F and G**.

- Twenty four (24) 6 1/2" x 2 1/2" rectangles from fabrics **H, I and J**.
- Twenty four (24) 4 1/2" x 2 1/2" rectangles from fabrics **H, I and J**.
- Twelve (12) 4 1/2" x 2 1/2" rectangles from fabrics **H, I and J**.
- Twenty four (24) 8 1/2" x 2 1/2" rectangles from fabrics **K and L**.
- Twenty four (24) 6 1/2" x 2 1/2" rectangles from fabrics **K and L**.
- Twelve (12) 4 1/2" x 2 1/2" rectangles from fabrics **K and L**.
- Twelve (12) 2 1/2" x 2 1/2" rectangles from fabrics **K and L**.

## CONSTRUCTION

*Sew all right sides together with 1/4" seam allowance.*

### HST (Half Square Triangles)

- Take twelve (12) 4 7/8" x 4 7/8" squares from fabric **A** and six (6) 4 7/8" x 4 7/8" squares from fabrics **B, C, D, E, F, G, H, I, J, K, and L**.
- Pair the squares following Diagram 2 to get HST.
- Place the squares face to face.
- Draw a diagonal line and stitch at 1/4" from each side of the line.
- Cut following the drawn line.
- Open and press the two (2) resulting HST.

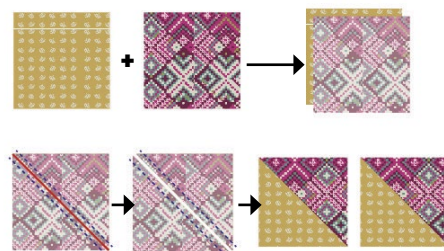


DIAGRAM 1



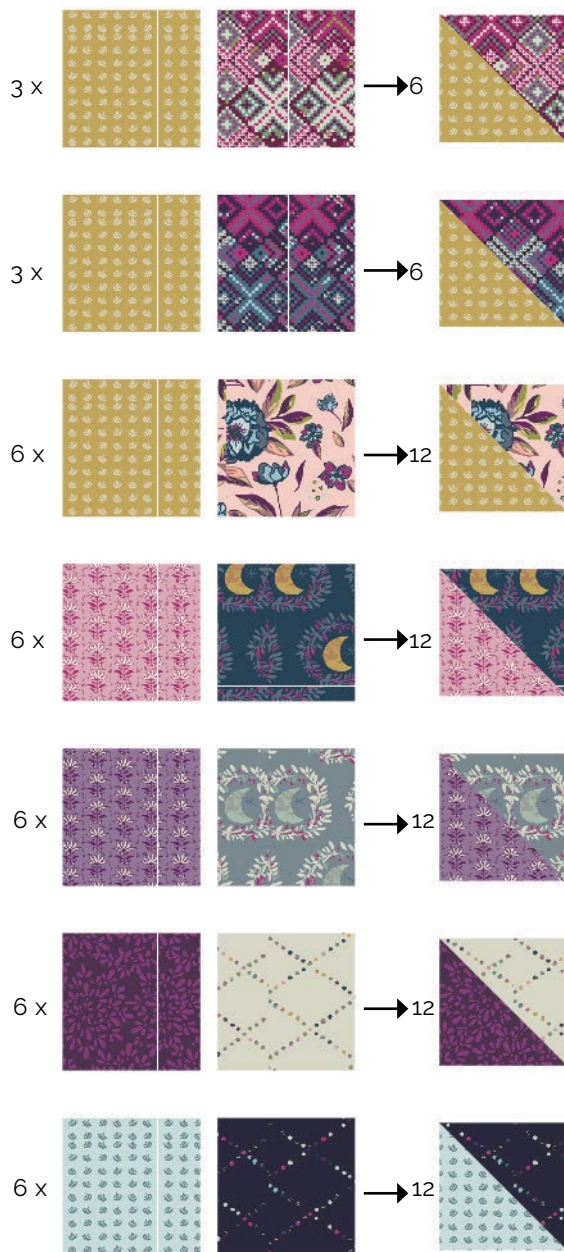


DIAGRAM 2

### Block 1

- Take six (6)  $8\frac{1}{2}$ " x  $2\frac{1}{2}$ " rectangles from fabric **G**, six (6)  $6\frac{1}{2}$ " x  $2\frac{1}{2}$ " rectangles from fabrics **G** and **H**, three (3)  $4\frac{1}{2}$ " x  $2\frac{1}{2}$ " rectangles from fabric **G**, six (6)  $4\frac{1}{2}$ " x  $2\frac{1}{2}$ " rectangles from fabric **H**, and three (3)  $2\frac{1}{2}$ " x  $2\frac{1}{2}$ " square from fabrics **G** and **H**.
- Take three (3) HSTs with fabrics **AG** and three (3) HSTs with fabrics **BH**.
- Make three (3) **Block 1** following Diagram 3.

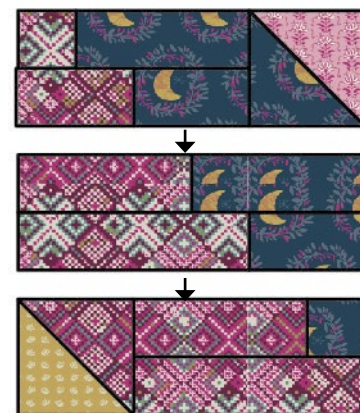


Block 1 x 3

DIAGRAM 3

### Block 2

- Take six (6)  $8\frac{1}{2}$ " x  $2\frac{1}{2}$ " rectangles from fabric **G**, six (6)  $6\frac{1}{2}$ " x  $2\frac{1}{2}$ " rectangles from fabrics **G** and **H**, three (3)  $4\frac{1}{2}$ " x  $2\frac{1}{2}$ " rectangles from fabric **G**, six (6)  $4\frac{1}{2}$ " x  $2\frac{1}{2}$ " rectangles from fabric **H**, and three (3)  $2\frac{1}{2}$ " x  $2\frac{1}{2}$ " square from fabrics **G** and **H**.
- Take three (3) HSTs with fabrics **AG** and three (3) HSTs with fabrics **BH**.
- Make three (3) **Block 2** following Diagram 4.

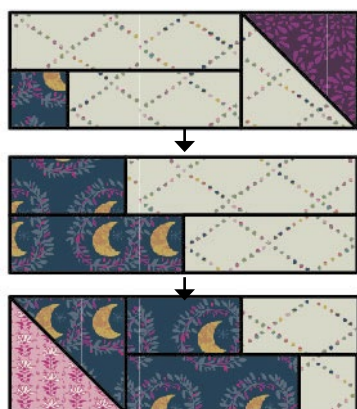


Block 2 x 3

DIAGRAM 4

### Block 3

- Take six (6)  $8\frac{1}{2}$ " x  $2\frac{1}{2}$ " rectangles from fabric **K**, six (6)  $6\frac{1}{2}$ " x  $2\frac{1}{2}$ " rectangles from fabrics **K** and **H**, three (3)  $4\frac{1}{2}$ " x  $2\frac{1}{2}$ " rectangles from fabric **K**, six (6)  $4\frac{1}{2}$ " x  $2\frac{1}{2}$ " rectangles from fabric **H**, and three (3)  $2\frac{1}{2}$ " x  $2\frac{1}{2}$ " square from fabrics **K** and **H**.
- Take three (3) HSTs with fabrics **KD** and three (3) HSTs with fabrics **BH**.
- Make three (3) **Block 3** following Diagram 5.

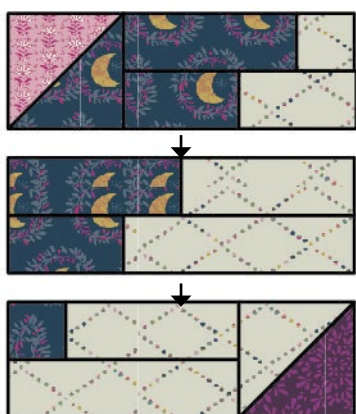


Block 3 × 3

DIAGRAM 5

#### Block 4

- Take six (6)  $8\frac{1}{2}$ " x  $2\frac{1}{2}$ " rectangles from fabric **K**, six (6)  $6\frac{1}{2}$ " x  $2\frac{1}{2}$ " rectangles from fabrics **K** and **H**, three (3)  $4\frac{1}{2}$ " x  $2\frac{1}{2}$ " rectangles from fabric **K**, six (6)  $4\frac{1}{2}$ " x  $2\frac{1}{2}$ " rectangles from fabric **H**, and three (3)  $2\frac{1}{2}$ " x  $2\frac{1}{2}$ " square from fabrics **K** and **H**.
- Take three (3) HSTs with fabrics **KD** and three (3) HSTs with fabrics **BH**.
- Make three (3) **Block 4** following Diagram 6.

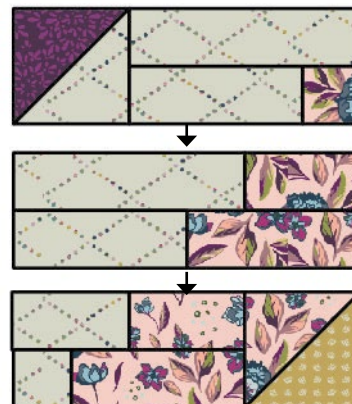


Block 4 × 3

DIAGRAM 6

#### Block 5

- Take six (6)  $8\frac{1}{2}$ " x  $2\frac{1}{2}$ " rectangles from fabric **K**, six (6)  $6\frac{1}{2}$ " x  $2\frac{1}{2}$ " rectangles from fabrics **K** and **J**, three (3)  $4\frac{1}{2}$ " x  $2\frac{1}{2}$ " rectangles from fabric **K**, six (6)  $4\frac{1}{2}$ " x  $2\frac{1}{2}$ " rectangles from fabric **J**, and three (3)  $2\frac{1}{2}$ " x  $2\frac{1}{2}$ " square from fabrics **K** and **J**.
- Take three (3) HSTs with fabrics **KD** and three (3) HSTs with fabrics **AJ**.
- Make three (3) **Block 5** following Diagram 7.

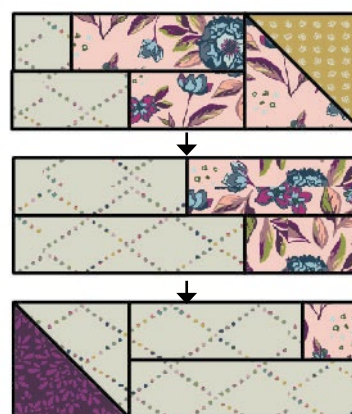


Block 5 × 3

DIAGRAM 7

#### Block 6

- Take six (6)  $8\frac{1}{2}$ " x  $2\frac{1}{2}$ " rectangles from fabric **K**, six (6)  $6\frac{1}{2}$ " x  $2\frac{1}{2}$ " rectangles from fabrics **K** and **J**, three (3)  $4\frac{1}{2}$ " x  $2\frac{1}{2}$ " rectangles from fabric **K**, six (6)  $4\frac{1}{2}$ " x  $2\frac{1}{2}$ " rectangles from fabric **J**, and three (3)  $2\frac{1}{2}$ " x  $2\frac{1}{2}$ " square from fabrics **K** and **J**.
- Take three (3) HSTs with fabrics **KD** and three (3) HSTs with fabrics **AJ**.
- Make three (3) **Block 6** following Diagram 8.



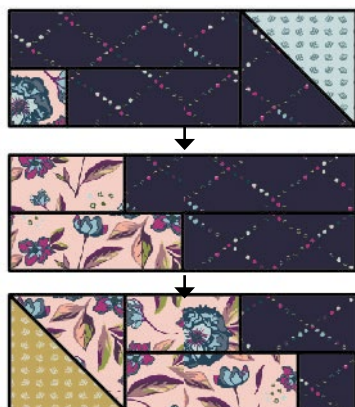
Block 6 × 3

DIAGRAM 8

#### Block 7

- Take six (6)  $8\frac{1}{2}$ " x  $2\frac{1}{2}$ " rectangles from fabric **L**, six (6)  $6\frac{1}{2}$ " x  $2\frac{1}{2}$ " rectangles from fabrics **L** and **J**, three (3)  $4\frac{1}{2}$ " x  $2\frac{1}{2}$ " rectangles from fabric **L**, six (6)  $4\frac{1}{2}$ " x  $2\frac{1}{2}$ " rectangles from fabric **J**, and three (3)  $2\frac{1}{2}$ " x  $2\frac{1}{2}$ " square from fabrics **L** and **J**.
- Take three (3) HSTs with fabrics **EL** and three (3) HSTs with fabrics **AJ**.
- Make three (3) **Block 7** following Diagram 9.



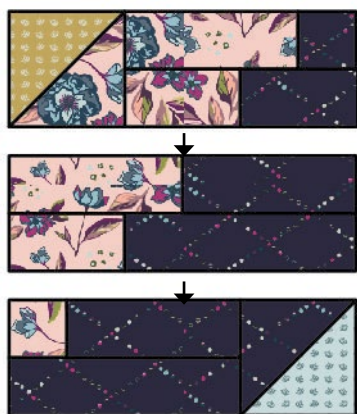


Block 7 × 3

DIAGRAM 9

### Block 8

- Take six (6)  $8\frac{1}{2}$ " x  $2\frac{1}{2}$ " rectangles from fabric **L**, six (6)  $6\frac{1}{2}$ " x  $2\frac{1}{2}$ " rectangles from fabrics **L** and **J**, three (3)  $4\frac{1}{2}$ " x  $2\frac{1}{2}$ " rectangles from fabric **L**, six (6)  $4\frac{1}{2}$ " x  $2\frac{1}{2}$ " rectangles from fabric **J**, and three (3)  $2\frac{1}{2}$ " x  $2\frac{1}{2}$ " square from fabrics **L** and **J**.
- Take three (3) HSTs with fabrics **EL** and three (3) HSTs with fabrics **AJ**.
- Make three (3) **Block 8** following Diagram 10.

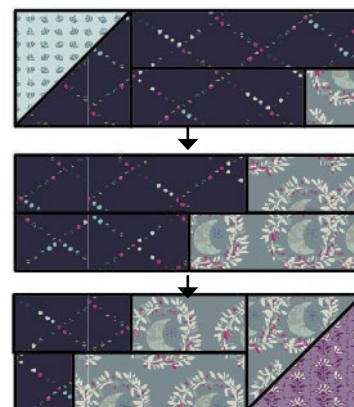


Block 8 × 3

DIAGRAM 10

### Block 9

- Take six (6)  $8\frac{1}{2}$ " x  $2\frac{1}{2}$ " rectangles from fabric **L**, six (6)  $6\frac{1}{2}$ " x  $2\frac{1}{2}$ " rectangles from fabrics **L** and **I**, three (3)  $4\frac{1}{2}$ " x  $2\frac{1}{2}$ " rectangles from fabric **L**, six (6)  $4\frac{1}{2}$ " x  $2\frac{1}{2}$ " rectangles from fabric **I**, and three (3)  $2\frac{1}{2}$ " x  $2\frac{1}{2}$ " square from fabrics **L** and **I**.
- Take three (3) HSTs with fabrics **EL** and three (3) HSTs with fabrics **CI**.
- Make three (3) **Block 9** following Diagram 11.

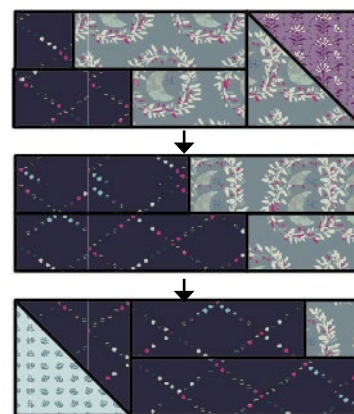


Block 9 × 3

DIAGRAM 11

### Block 10

- Take six (6)  $8\frac{1}{2}$ " x  $2\frac{1}{2}$ " rectangles from fabric **L**, six (6)  $6\frac{1}{2}$ " x  $2\frac{1}{2}$ " rectangles from fabrics **L** and **I**, three (3)  $4\frac{1}{2}$ " x  $2\frac{1}{2}$ " rectangles from fabric **L**, six (6)  $4\frac{1}{2}$ " x  $2\frac{1}{2}$ " rectangles from fabric **I**, and three (3)  $2\frac{1}{2}$ " x  $2\frac{1}{2}$ " square from fabrics **L** and **I**.
- Take three (3) HSTs with fabrics **EL** and three (3) HSTs with fabrics **CI**.
- Make three (3) **Block 10** following Diagram 12.

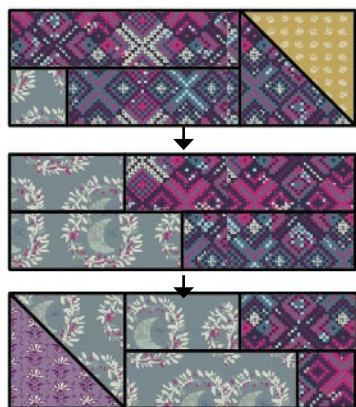


Block 10 × 3

DIAGRAM 12

### Block 11

- Take six (6)  $8\frac{1}{2}$ " x  $2\frac{1}{2}$ " rectangles from fabric **F**, six (6)  $6\frac{1}{2}$ " x  $2\frac{1}{2}$ " rectangles from fabrics **F** and **I**, three (3)  $4\frac{1}{2}$ " x  $2\frac{1}{2}$ " rectangles from fabric **F**, six (6)  $4\frac{1}{2}$ " x  $2\frac{1}{2}$ " rectangles from fabric **I**, and three (3)  $2\frac{1}{2}$ " x  $2\frac{1}{2}$ " square from fabrics **F** and **I**.
- Take three (3) HSTs with fabrics **AF** and three (3) HSTs with fabrics **CI**.
- Make three (3) **Block 11** following Diagram 13.

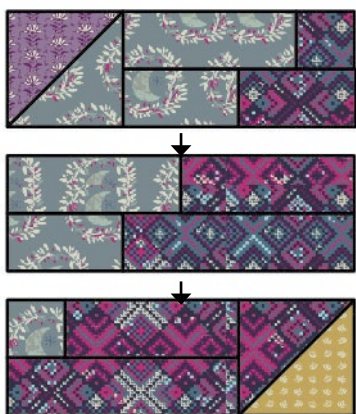


Block 11 x 3

DIAGRAM 13

## Block 12

- Take six (6)  $8\frac{1}{2}$ " x  $2\frac{1}{2}$ " rectangles from fabric **F**, six (6)  $6\frac{1}{2}$ " x  $2\frac{1}{2}$ " rectangles from fabrics **F** and **I**, three (3)  $4\frac{1}{2}$ " x  $2\frac{1}{2}$ " rectangles from fabric **F**, six (6)  $4\frac{1}{2}$ " x  $2\frac{1}{2}$ " rectangles from fabric **I**, and three (3)  $2\frac{1}{2}$ " x  $2\frac{1}{2}$ " square from fabrics **F** and **I**.
- Take three (3) HSTs with fabrics **AF** and three (3) HSTs with fabrics **CI**.
- Make three (3) **Block 12** following Diagram 14.

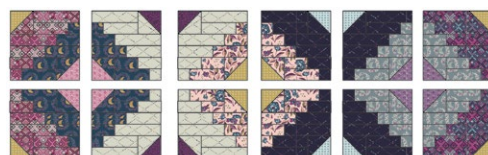


Block 12 x 3

DIAGRAM 14

## Rows

- Make Row 1 and Row 2 three (3) times:
- Row 1: **Block 1** - **Block 3** - **Block 5** - **Block 7** - **Block 9** - **Block 11**.
- Row 2: **Block 2** - **Block 4** - **Block 6** - **Block 8** - **Block 10** - **Block 12**.
- Follow Diagram 15.



Row 1 x 3

Row 2 x 3

DIAGRAM 15

## ASSEMBLING THE TOP

*Sew all rights sides together with  $\frac{1}{4}$ " seam allowance. Press open.*

- Join the rows:
- Row 1 - Row 2 - Row 1 - Row 2 - Row 1 - Row 2.



DIAGRAM 16



## QUILT ASSEMBLY

*Sew rights sides together.*

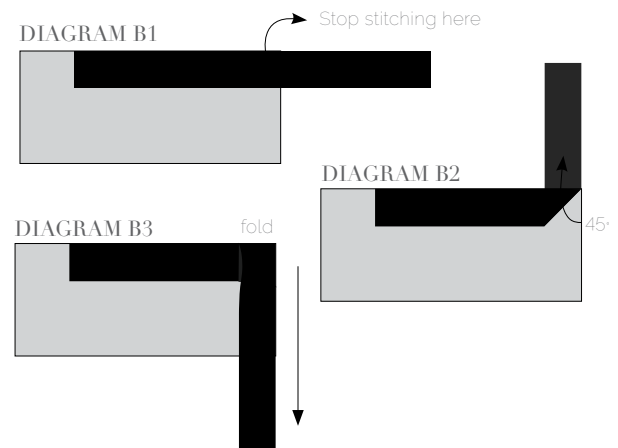
- Place BACKING FABRIC on a large surface wrong side up. Stretch it with masking tape against that surface.
- Place BATTING on top of backing fabric.
- Place TOP on top of the batting with right side facing up. Smooth away wrinkles using your hands.
- Pin all layers together and baste with basting thread, using long stitches. You can also use safety pins to join the layers.
- Machine or hand quilt starting at the center and working towards the corners. Remember that quilting motifs are a matter of personal preference. Have fun choosing yours!
- After you finished, trim excess of any fabric or batting, squaring the quilt to proceed to bind it.

## BINDING

*Sew rights sides together.*

- Cut enough strips  $1\frac{1}{2}$ " wide by the width of the fabric **A** to make a final strip 298" long. Start sewing the binding strip in the middle of one of the sides of the quilt, placing the strip right side down and leaving an approximated 5" tail. Sew with  $\frac{1}{4}$ " seam allowance (using straight stitch), aligning the strip's raw edge with the quilt top's raw edge.
- Stop stitching  $\frac{1}{4}$ " before the edge of the quilt (DIAGRAM B 1). Clip the threads. Remove the quilt from under the machine presser foot. Fold the strip in a motion of  $45^\circ$  and upward, pressing with your fingers (DIAGRAM B2). Hold this fold with your finger, bring the strip down in line with the next edge, making a horizontal fold that aligns with the top edge of the quilt (DIAGRAM B3). Start sewing at  $\frac{1}{4}$ " of the border, stitching all the layers. Do the same in the four corners of the quilt.

- XXXXXXXXXXXXXXXXXXXXXXXXXXXXXXXXXXXX
- Stop stitching before you reach the last 5 or 6 inches. Cut the threads and remove the quilt from under the machine presser foot. Lay the loose ends of the binding flat along the quilt edge, folding the ends back on themselves where they meet. Press them together to form a crease. Using this crease as the stitching line, sew the two open ends of the binding with right sides together (you can help yourself marking with a pencil if the crease is difficult to see).
  - Trim seam to  $\frac{1}{4}$ " and press open. Complete the sewing. Turn binding to back of the quilt, turn raw edge inside and stitch by hand using blind stitch.



[artgalleryfabrics.com](http://artgalleryfabrics.com)

NOTE: While all possible care has been taken to ensure the accuracy of this pattern, We are not responsible for printing errors or the way in which individual work varies. Please read instructions carefully before starting the construction of this quilt. If desired, wash and iron your fabrics before starting to cut.

© 2019 Courtesy of Art Gallery Quilts LLC. All Rights Reserved.