



✕ ✕ ✕ ✕ ✕ ✕ ✕ ✕ ✕ ✕ ✕ ✕ ✕ ✕ ✕ ✕ ✕ ✕ ✕ ✕

A DIVISION OF AGF

# I scream . . .



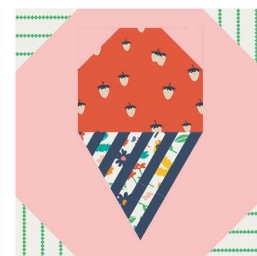
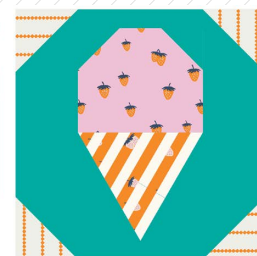
DESIGNED BY AGF STUDIO

AGFstudio



## Summer Side

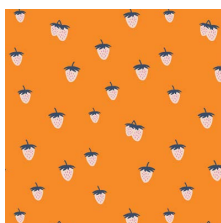
FABRICS DESIGNED BY DANA WILLARD



NOON



SMS-73200  
BUNGALOW BLOOM SUNRISE



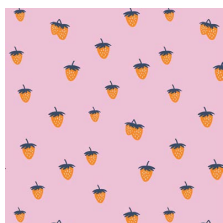
SMS-73201  
BACKYARD BERRY TANG



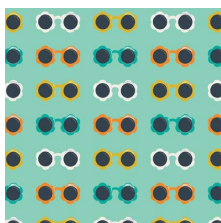
SMS-73202  
BREEZY BLOSSOMS PINEAPPLE



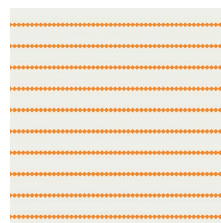
SMS-73203  
POPSICLE PARTY WATERMINT



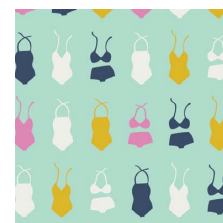
SMS-73204  
BACKYARD BERRY CANDY



SMS-73206  
SUNNY SHADES MINT



SMS-73207  
SEASIDE STRIPES TANGERINE

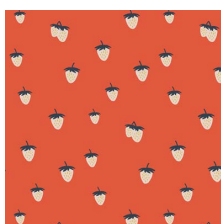


SMS-73208  
SWIMSUIT SOIREE SEAFOAM

SPLASH



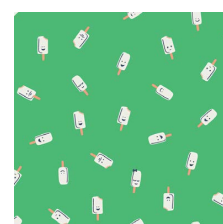
SMS-83200  
BUNGALOW BLOOM MOONRISE



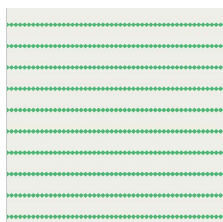
SMS-83201  
BACKYARD BERRY CHERRY



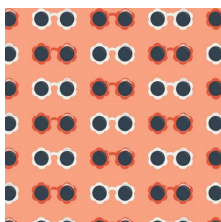
SMS-83202  
BREEZY BLOSSOMS LEMONADE



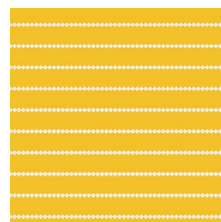
SMS-83203  
POPSICLE PARTY SPEARMINT



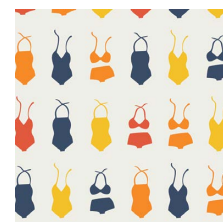
SMS-83205  
SEASIDE STRIPES SEAGLASS



SMS-83206  
SUNNY SHADES MELON



SMS-83207  
SEASIDE STRIPES SUNNY



SMS-83208  
SWIMSUIT SOIREE COASTLINE



FEEL THE DIFFERENCE © 2019 Courtesy of Art Gallery Quilts LLC. All Rights Reserved.



FINISHED SIZE | 12" x 12"

## FABRIC REQUIREMENTS

## Block 1

Fabric A	SMS-73208	F8
Fabric B	SMS-73203	F8
Fabric C	SMS-73202	F8
Fabric D	PE-467	F8
Fabric E	PE-474	FQ

## Block 2

Fabric A	SMS-73204	F8
Fabric B	SMS-73207	F8
Fabric C	SMS-73201	F8
Fabric D	PE-433	F8
Fabric E	PE-402	FQ

### Block 3

Fabric A	SMS-83208	F8
Fabric B	SMS-83203	F8
Fabric C	SMS-83202	F8
Fabric D	PE-433	F8
Fabric E	PE-467	FQ

## Block 4

Fabric A	SMS-83201	F8
Fabric B	SMS-83205	F8
Fabric C	SMS-83202	F8
Fabric D	PE-467	F8
Fabric E	PE-420	FQ

## CUTTING DIRECTIONS

*1/4" seam allowances are included.  
WOF means width of fabric.*

- One (1)  $6\frac{1}{2}" \times 5\frac{1}{2}"$  rectangle from fabric **A**.
- Four (4)  $3\frac{1}{2}" \times 3\frac{1}{2}"$  squares from fabric **B**.
- Five (5)  $8" \times 1"$  strips from fabric **C**.
- Six (6)  $8" \times 1"$  strips from fabric **D**.



- Two (2)  $2\frac{1}{2}$ " x  $2\frac{1}{2}$ " squares from fabric E.
- Two (2)  $3\frac{1}{2}$ " x  $5\frac{1}{2}$ " squares from fabric E.
- Two (2)  $12\frac{1}{2}$ " x  $1\frac{1}{2}$ " rectangles from fabric E.
- One (1) template 1 from fabric E.
- One (1) template 3 from fabric E.

## CONSTRUCTION

*Sew all rights sides together with 1/4" seam allowance.*

- Take one (1)  $6\frac{1}{2}" \times 5\frac{1}{2}"$  rectangle from fabric **A**, two (2)  $2\frac{1}{2}" \times 2\frac{1}{2}"$  squares from fabric **E**, and two (2)  $3\frac{1}{2}" \times 5\frac{1}{2}"$  squares from fabric **E**.
- Sew the two (2)  $2\frac{1}{2}" \times 2\frac{1}{2}"$  squares from fabric **E** as corner square triangles, in the top corners of the square from fabric **A**.
- Join the two (2)  $3\frac{1}{2}" \times 5\frac{1}{2}"$  rectangles from fabric **E** to the sides of the rectangle from fabric **A**.



DIAGRAM 1

- Take five (5) 8" x 1" strips from fabric **C**, six (6) 8" x 1" strips from fabric **D**, and template 2.
- Join the strips as follows: **D - C - D - C - D - C - D - C - D - C - D**.
- Use template 2 and cut it from the strip set.
- Make sure to place the trim corners on the top and right side following Diagram 2.

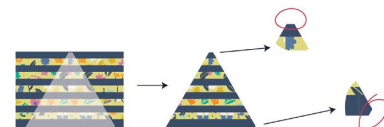


DIAGRAM 2

- Take template 1 and template 2 from fabric **E** and join them to template 2 following Diagram 3.

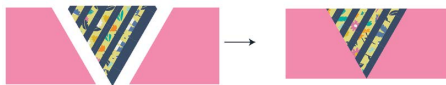


DIAGRAM 3

- Take two (2)  $12\frac{1}{2}$ " x  $1\frac{1}{2}$ " rectangles from fabric **E** and four (4)  $3\frac{1}{2}$ " x  $3\frac{1}{2}$ " squares from fabric **B**.
- Join the rectangles from fabric **E** to the top and bottom of the block.
- Use the four (4) squares from fabric **B** and join them as corner square triangles to each corner of the block.

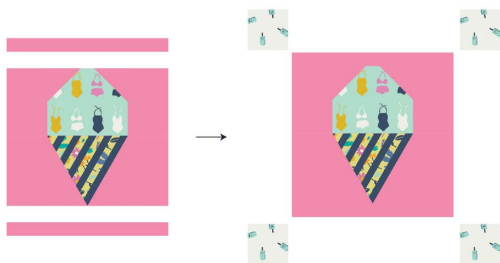


DIAGRAM 3

## QUILT ASSEMBLY

*Sew rights sides together.*

- Place BACKING FABRIC on a large surface wrong side up. Stretch it with masking tape against that surface.
- Place BATTING on top of backing fabric.
- Place TOP on top of the batting with right side facing up. Smooth away wrinkles using your hands.
- Pin all layers together and baste with basting thread, using long stitches. You can also use safety pins to join the layers.
- Machine or hand quilt starting at the center and working towards the corners. Remember that quilting motifs are a matter of personal preference. Have fun choosing yours!
- After you finished, trim excess of any fabric or batting, squaring the quilt to proceed to bind it.



[artgalleryfabrics.com](http://artgalleryfabrics.com)

*NOTE: While all possible care has been taken to ensure the accuracy of this pattern, We are not responsible for printing errors or the way in which individual work varies. Please read instructions carefully before starting the construction of this quilt. If desired, wash and iron your fabrics before starting to cut.*



