

flamingo

QUILT DESIGNED BY AGF STUDIO

AGFstudio



West Palm

FABRICS DESIGNED BY KATIE SKOOG

CORAL BEACH



WPA-64500
BEACH TREASURES LUMINESCENT



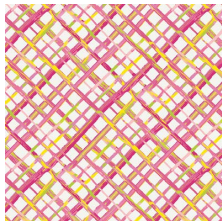
WPA-64501
SUMMER RHYTHMS SUN



WPA-64502
FLAMINGO FIELD MARINA



WPA-64503
SEASIDE GARDEN CORAL



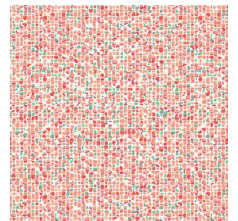
WPA-64504
UNDERCURRENTS WARM



WPA-64505
PLAYFUL SEAWEED DAYGLOW



WPA-64506
PALMRISE ARUBA TROPIC



WPA-64507
PLASH MOSAIC SUNBATHED

ULTRA VIOLET



WPA-54500
BEACH TREASURES INCANDESCENT



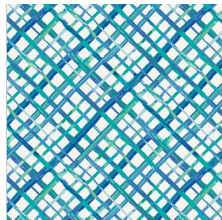
WPA-54501
SUMMER RHYTHMS BREEZE



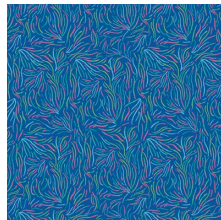
WPA-54502
FLAMINGO FIELD PEARL



WPA-54503
SEASIDE GARDEN ALGAE



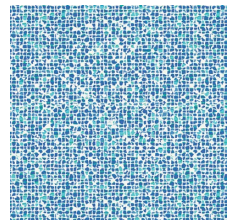
WPA-54504
UNDERCURRENTS FRESH



WPA-54505
PLAYFUL SEAWEED NIGHTGLOW



WPA-54506
PALMRISE ARUBA WIND



WPA-54507
PLASH MOSAIC AZURE



flamingo

FINISHED SIZE | 18" x 18"

FABRIC REQUIREMENTS

Fabric A WPA-54505 1 $\frac{5}{8}$ yd.
 Fabric B WPA-54500 1 $\frac{5}{8}$ yd.
 Fabric C PE-435 2 $\frac{1}{4}$ yd.

BACKING FABRIC
 WPA-54505 (Fabric A) *(included)*

CUTTING DIRECTIONS

*1/4" seam allowances are included.
 WOF means width of fabric.*

- Two (2) 13" x 19" rectangles from fabric A.
- One (1) 12 $\frac{1}{2}$ " x 18 $\frac{1}{2}$ " rectangle from fabric A.
- One (1) 18 $\frac{1}{2}$ " x 2 $\frac{1}{2}$ " strip from fabric A.
- One (1) 18 $\frac{1}{2}$ " x 1 $\frac{1}{2}$ " strip from fabric A.
- Two (2) 18 $\frac{1}{2}$ " x 1 $\frac{1}{2}$ " strips from fabric B.
- One (1) 18 $\frac{1}{2}$ " x 18 $\frac{1}{2}$ " square from fabric C.

CONSTRUCTION

Sew all rights sides together with 1/4" seam allowance.

- Take one (1) 18 $\frac{1}{2}$ " x 18 $\frac{1}{2}$ " square from fabric C and layer it with batting. Then quilt it.
- Take one (1) 12 $\frac{1}{2}$ " x 18 $\frac{1}{2}$ " rectangle from fabric A and the template and draw the flamingo on the rectangle to later use it as a guide to do reverse appliqué.

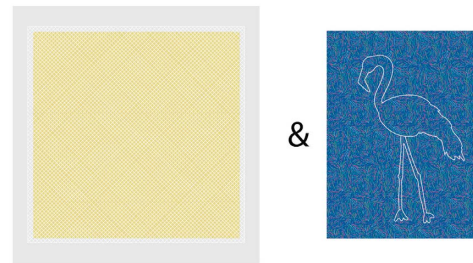


DIAGRAM 1

- Take the 12 $\frac{1}{2}$ " x 18 $\frac{1}{2}$ " rectangle from fabric A, one (1) 18 $\frac{1}{2}$ " x 2 $\frac{1}{2}$ " strip from fabric A, one (1) 18 $\frac{1}{2}$ " x 1 $\frac{1}{2}$ " strip from fabric A, and two (2) 18 $\frac{1}{2}$ " x 1 $\frac{1}{2}$ " strips from fabric B.

- Join the five pieces following Diagram 2.

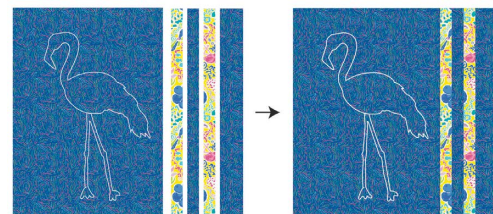


DIAGRAM 2

- Align the quilted piece with fabric C behind the block from diagram 2 and stitch following the flamingo outline.
- Using your scissors, cut Fabric A carefully inside the stitched line to reveal the quilted Fabric C.

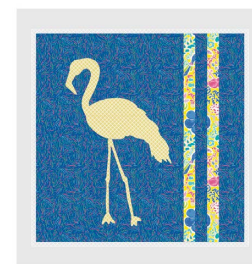
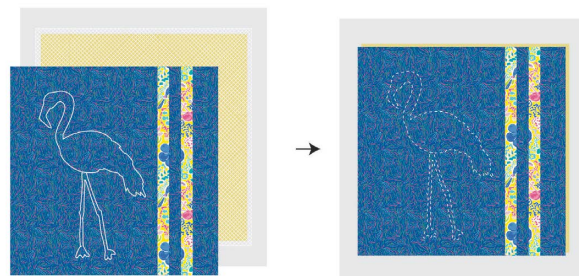


DIAGRAM 3

- Trim the pillow top to a 18½" x 18½" square.

BACK PILLOW

- Take Two (2) 13" x 19" rectangles from fabric A.
- Finish one (1) 19" edge on each rectangle by folding the edge ¼" twice and then edge-stitching.
- Pin both rectangles to the right side of the pillow top in a way that they overlap in the center of the pillow.
- Stitch all around at ¼".

QUILT ASSEMBLY

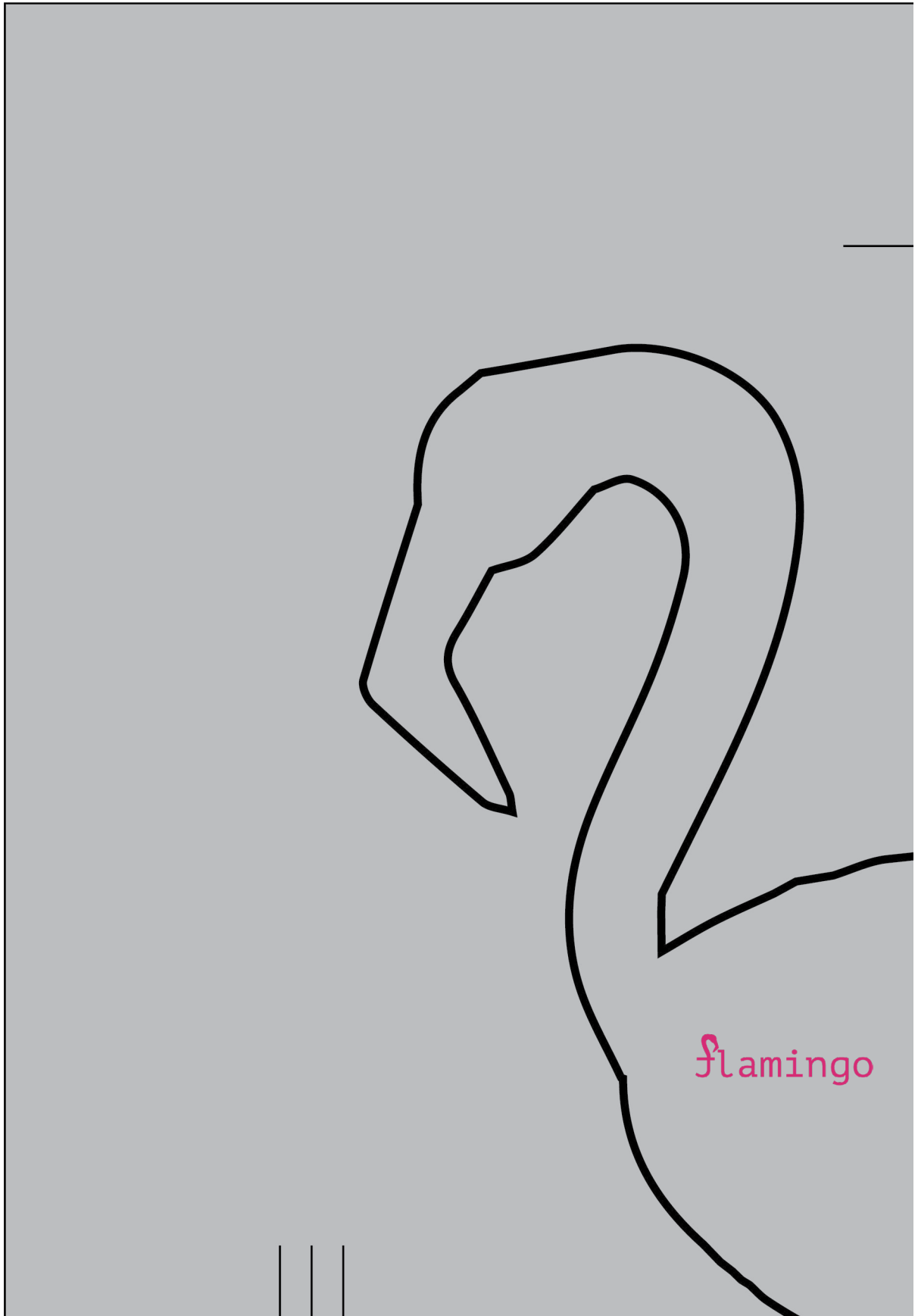
Sew rights sides together.

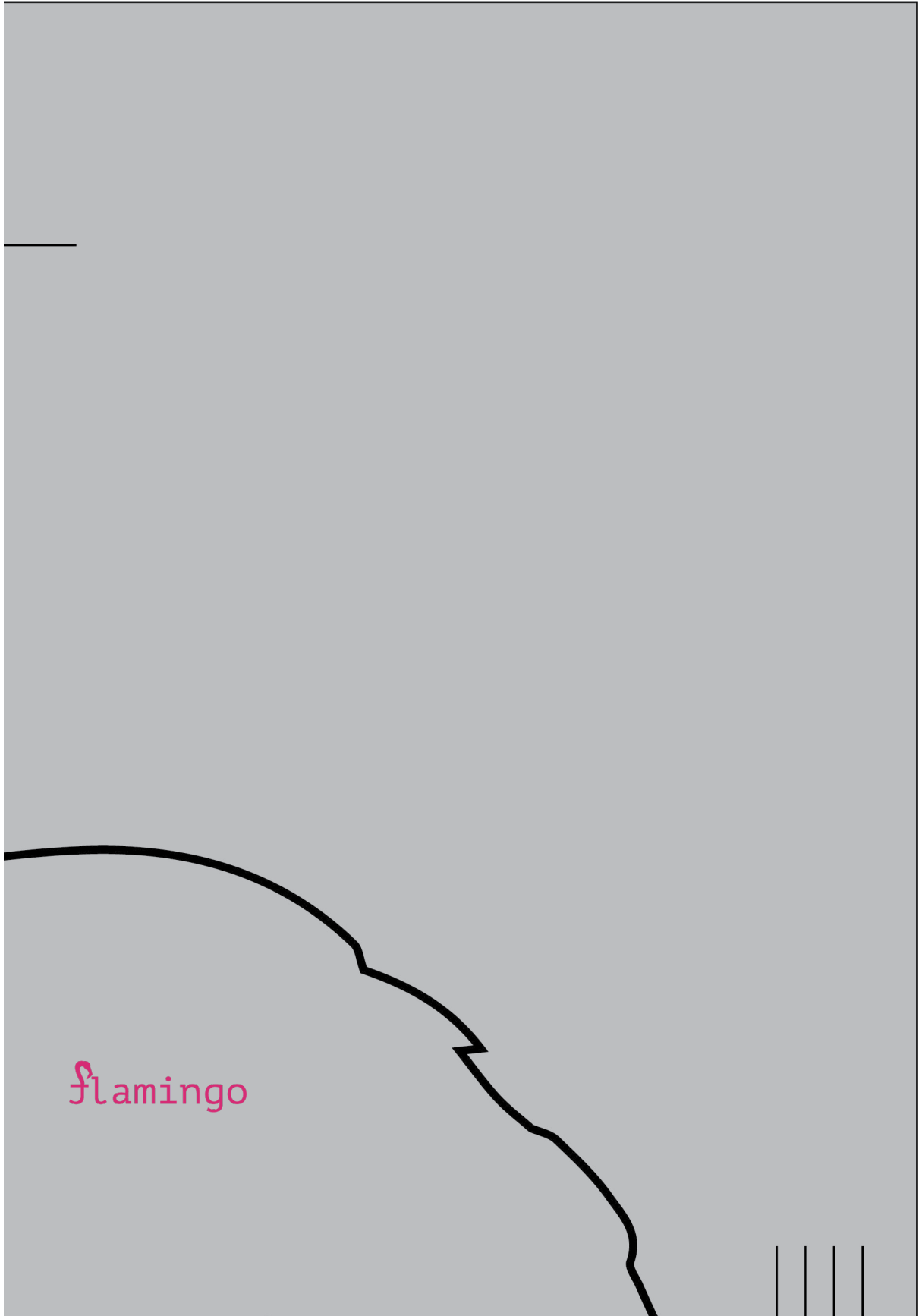
- Place BACKING FABRIC on a large surface wrong side up. Stretch it with masking tape against that surface.
- Place BATTING on top of backing fabric.
- Place TOP on top of the batting with right side facing up. Smooth away wrinkles using your hands.
- Pin all layers together and baste with basting thread, using long stitches. You can also use safety pins to join the layers.
- Machine or hand quilt starting at the center and working towards the corners. Remember that quilting motifs are a matter of personal preference. Have fun choosing yours!
- After you finished, trim excess of any fabric or batting, squaring the quilt to proceed to bind it.



artgalleryfabrics.com

NOTE: While all possible care has been taken to ensure the accuracy of this pattern, We are not responsible for printing errors or the way in which individual work varies. Please read instructions carefully before starting the construction of this quilt. If desired, wash and iron your fabrics before starting to cut.





flamingo



