

DESIGNED BY AGF STUDIO

AGFstudio

pine  
LULLABY

FABRICS DESIGNED BY AGF STUDIO



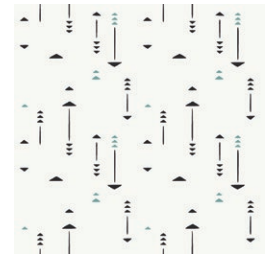
KC-1300  
FURRIES COOL



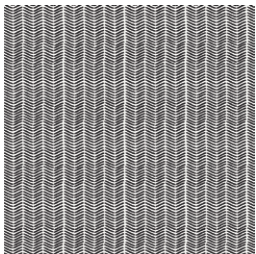
KC-1301  
SNUGGERY BREEZE



KC-1302  
LOBLOLLY PINE



KC-1303  
ETCHINGS MIST



KC-1304  
LINE MARKINGS



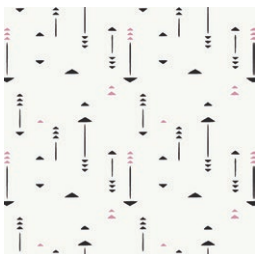
KC-1305  
FURRIES SWEET



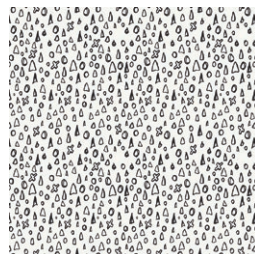
KC-1306  
SNUGGERY WARMTH



KC-1307  
LOBLOLLY WOOD

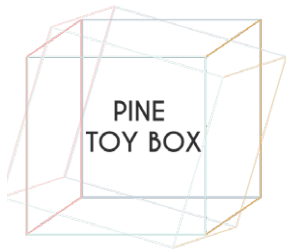


KC-1308  
ETCHINGS NECTAR



KC-1309  
CUTE CARVINGS





**FINISHED SIZE** | 10" x 10"

## FABRIC REQUIREMENTS

Fabric <b>A</b>	KC-1306	$\frac{3}{8}$ yd.
Fabric <b>B</b>	KC-1308	$\frac{1}{4}$ yd.
Fabric <b>C</b>	KC-1304	$\frac{1}{4}$ yd.
Fabric <b>D</b>	KS-110	$\frac{1}{4}$ yd.
Fabric <b>E</b>	KS-125	$\frac{3}{8}$ yd.
Fabric <b>F</b>	KS-112	$\frac{1}{4}$ yd.
Fabric <b>G</b>	KS-105	$\frac{1}{4}$ yd.
Fabric <b>H</b>	KS-116	$\frac{1}{4}$ yd.

### ADDITIONAL MATERIALS

Soft Interfacing.  
Ultra firm interfacing.  
Batting.

## CUTTING DIRECTIONS

*$\frac{1}{4}$ " seam allowances are included.  
WOF means width of fabric.*

- Two (2) 10½" Squares from fabric **A**.
- Two (2) 10½" Squares from fabric **B**.
- Two (2) 4½" x 26" strips from fabric **C**.
- Two (2) 10½" Squares from fabric **D**.
- One (1) 1½" x 42" Strip from fabric **D**.
- Two (2) 10½" Squares from fabric **E**.
- One (1) 1½" x 42" Strip from fabric **E**.
- Two (2) 1½" x 10½" Strip from fabric **F**.
- Two (2) 1½" x 10½" Strip from fabric **G**.
- Two (2) 10½" Squares from fabric **H**.

### ADDITIONAL MATERIALS

- Four (4) 10" Softer interfacing.
- Four (4) 10" Ultra firm interfacing.
- Two (2) 4½" x 26" strips Batting.

## CONSTRUCTION

*Sew all rights sides together with  $\frac{1}{4}$ " seam allowance.*

- Take the 10½" squares from fabrics **D** and **H** for the lining, also take the 10" squares from the soft Interfacing.
- Place on top the interfacing pieces on each of the fabric squares and align it to center.
- Make sure the interfacing is in the wrong side of the fabric.
- Iron them to hold them in place.

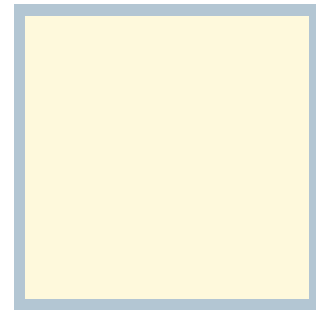


DIAGRAM 1

- Attach the squares together right sides fabric together alternating the fabrics **D****H****D****H** creating a cube.

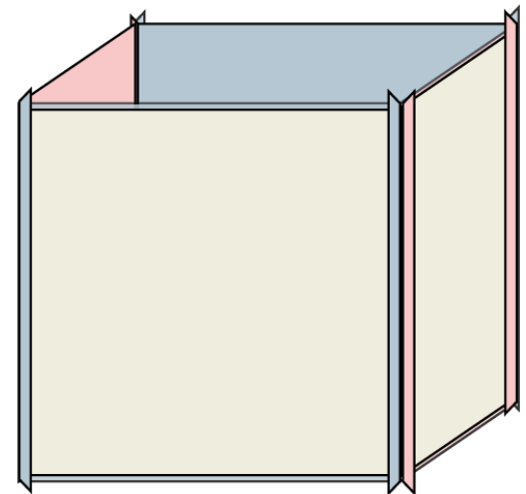


DIAGRAM 2

- Take one 10½" square from fabric **E** for the bottom of the cube.
- Pick an edge for the bottom and before sewing it make sure to pin the edges from the bottom fabric to the lining cube.
- It is always recommended to use the overlock machine when using knits. sew the bottom of the cube.
- Set aside.





