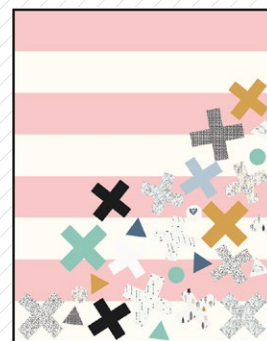


A collage of various geometric shapes and patterns, including crosses, triangles, and circles, set against a background of horizontal pink and white stripes. The shapes are in various colors (black, green, blue, orange, white) and some contain intricate patterns or text.

XXXXXXXXXXXXXXXXXXXX

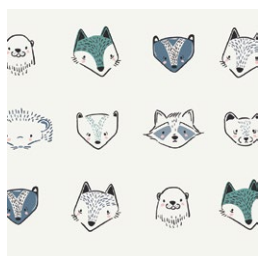
Sweet Nap



pine LULLABY

FABRICS DESIGNED BY AGF STUDIO

COLOR OPTION



KC-1300
FURRIES COOL



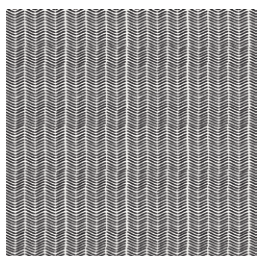
KC-1301
SNUGGERY BREEZE



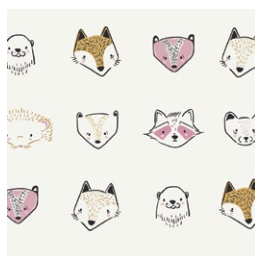
KC-1302
LOBLOLLY PINE



KC-1303
ETCHINGS MIST



KC-1304
LINE MARKINGS



KC-1305
FURRIES SWEET



KC-1306
SNUGGERY WARMTH



KC-1307
LOBLOLLY WOOD



KC-1308
ETCHINGS NECTAR



KC-1309
CUTE CARVINGS

KS-105
SAHARA SUN



KS-116
CALID RAIN



KS-126
WARM RAIN



KS-125
DENIM BLUE



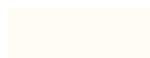
KS-107
CAVIAR



KS-108
SNOW WHITE



KS-109
WHITE LINEN



KS-110
CRYSTAL PINK



KS-106
AMARATH





FINISHED SIZE | 50" x 64"

FABRIC REQUIREMENTS

Fabric A	KC-1304	1/3 yd.
Fabric B	KC-1300	1/8 yd.
Fabric C	KC-1306	1/3 yd.
Fabric D	KC-1301	1/3 yd.
Fabric E	KC-1308	1/3 yd.
Fabric F	KC-1302	1/8 yd.
Fabric G	KC-1309	1/3 yd.
Fabric H	KC-1307	1/3 yd.
Fabric I	KC-1303	1/3 yd.
Fabric J	KS-105	1/3 yd.
Fabric K	KS-116	1/3 yd.
Fabric L	KS-126	1/3 yd.
Fabric M	KS-125	1/3 yd.
Fabric N	KS-107	2/3 yd.
Fabric O	KS-108	1/3 yd.
Fabric P	KS-109	1 1/8 yds.
Fabric Q	KS-110	1 1/8 yds.

BACKING FABRIC

KC-1309 2 yds. (suggested)

BINDING FABRIC

KS-107 (Fabric **N**) (included)

ADDITIONAL MATERIAL

Steam-a-seam- double fusible tape.

Easy-Knit Fusible Interfacing

CUTTING DIRECTIONS

1/4" seam allowances are included.
WOF means width of fabric.

One (1) of Template 1 from Fabrics **A, F, J, L**

One (1) of Template 4 from Fabrics **A, D, E, G, J, L**

Two (2) of Template 1 from Fabrics **B, M**

One (1) of Template 2 from Fabrics **B, C**

One (1) of Template 3 from Fabrics **C, D, G, H, I, J, K, O**

Two (2) of Template 2 from Fabric **L**

Two (2) of Template 3 from Fabric **N**

Four (4) 50 1/2" x 8 1/2" rectangle from Fabrics **P, Q**

CONSTRUCTION

Sew all rights sides together with 1/4" seam allowance.

- Join Fabric strips **P** and **Q** creating your quilt top.
- Quilt as desired.



DIAGRAM 1

- Now take your Fabric Template cut outs, with already applied the steam-a-seam on the wrong side of the fabric and follow the diagram below for each unit placement.

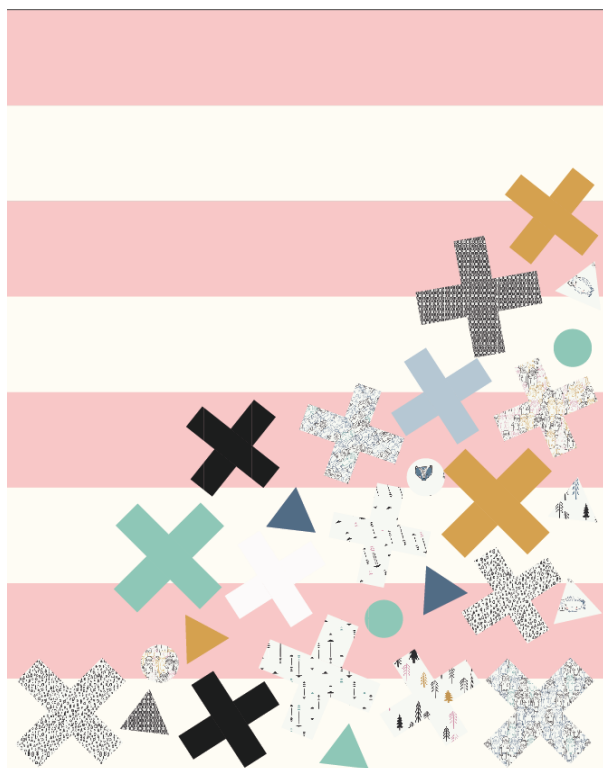
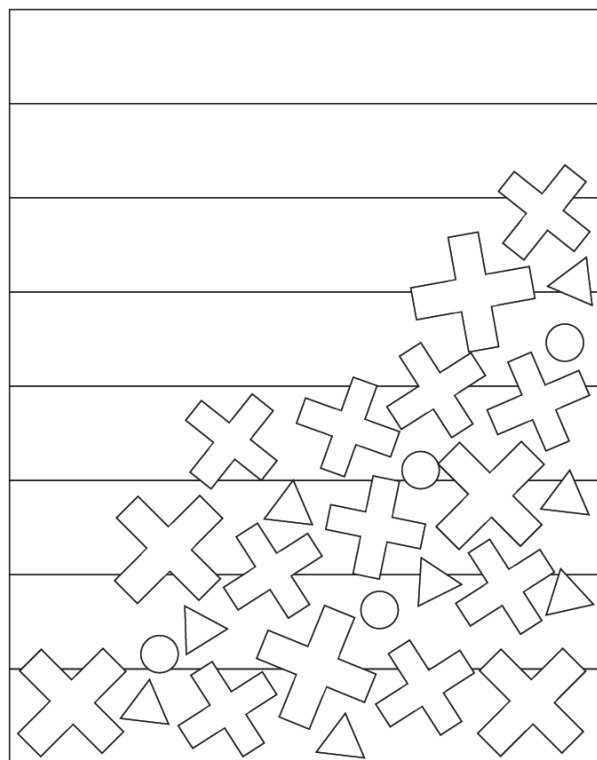


DIAGRAM 2

- Once you place your pieces as Diagram 2, press and seam and finish with zig zag stitching the edges.

QUILT ASSEMBLY

Sew rights sides together.

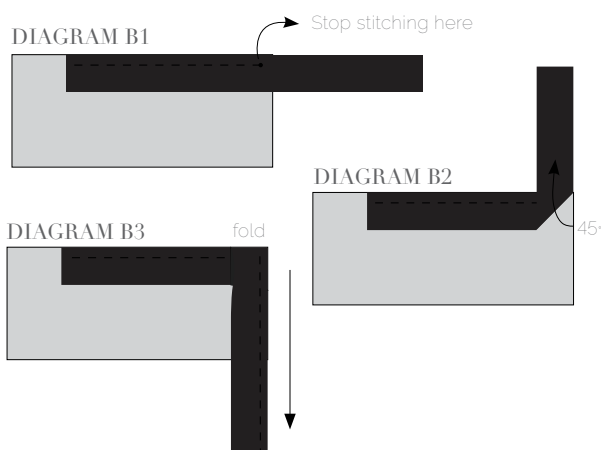
- Place BACKING FABRIC on a large surface wrong side up. Stretch it with masking tape against that surface.
- Place BATTING on top of backing fabric.
- Place TOP on top of the batting with right side facing up. Smooth away wrinkles using your hands.
- Pin all layers together and baste with basting thread, using long stitches. You can also use safety pins to join the layers.
- Machine or hand quilt starting at the center and working towards the corners. Remember that quilting motifs are a matter of personal preference. Have fun choosing yours!
- After you finished, trim excess of any fabric or batting, squaring the quilt to proceed to bind it.

BINDING

Sew rights sides together.

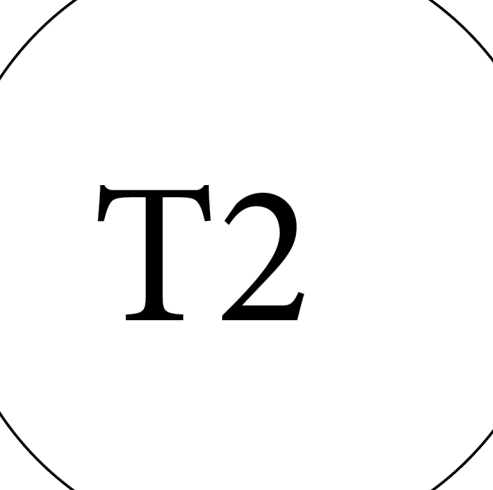
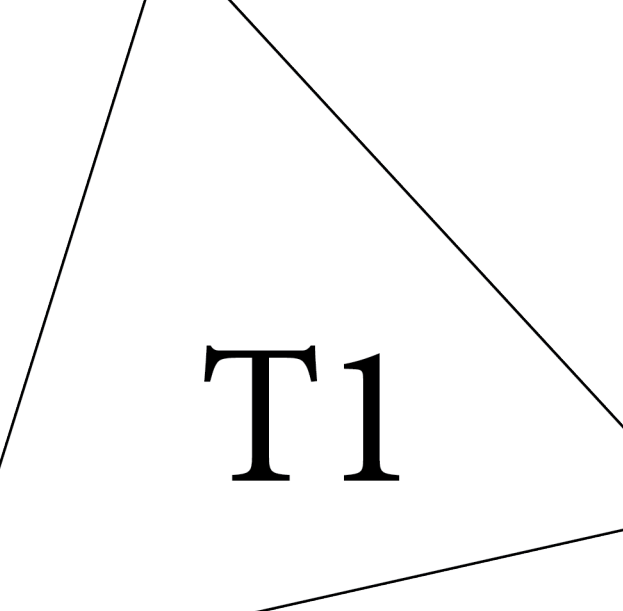
- Cut enough strips 1½" wide by the width of the fabric **B** to make a final strip 226" long. Start sewing the binding strip in the middle of one of the sides of the quilt, placing the strip right side down and leaving an approximated 5" tail. Sew with ¼" seam allowance (using straight stitch), aligning the strip's raw edge with the quilt top's raw edge.
- Stop stitching ¼" before the edge of the quilt (DIAGRAM B 1). Clip the threads. Remove the quilt from under the machine presser foot. Fold the strip in a motion of 45° and upward, pressing with your fingers (DIAGRAM B2). Hold this fold with your finger, bring the strip down in line with the next edge, making a horizontal fold that aligns with the top edge of the quilt (DIAGRAM B3). Start sewing at ¼" of the border, stitching all the layers. Do the same in the four corners of the quilt.

- Stop stitching before you reach the last 5 or 6 inches. Cut the threads and remove the quilt from under the machine presser foot. Lay the loose ends of the binding flat along the quilt edge, folding the ends back on themselves where they meet. Press them together to form a crease. Using this crease as the stitching line, sew the two open ends of the binding with right sides together (you can help yourself marking with a pencil if the crease is difficult to see).
- Trim seam to $\frac{1}{4}$ " and press open. Complete the sewing. Turn binding to back of the quilt, turn raw edge inside and stitch by hand using blind stitch.



artgalleryfabrics.com

NOTE: While all possible care has been taken to ensure the accuracy of this pattern, We are not responsible for printing errors or the way in which individual work varies. Please read instructions carefully before starting the construction of this quilt. If desired, wash and iron your fabrics before starting to cut.

A large circle with a thin black outline, centered on the page. Inside the circle, the text 'T2' is written in a large, bold, black serif font.A large, black-outlined triangle is centered on the page. Inside the triangle, the text "T1" is written in a large, bold, black serif font.



T3

