

Snuggling MiSt



capsules
by AGF

FREE PATTERN

XXXXXXXXXXXXXXXXXXXXXXXXXXXX

Snuggling MiSt

QUILT DESIGNED BY AGF STUDIO

AGFstudio

pine
LULLABY

FABRICS DESIGNED BY AGF STUDIO



KC-1300
FURRIES COOL



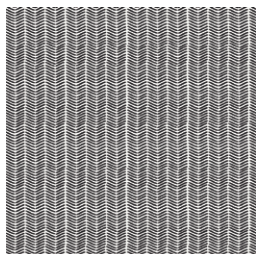
KC-1301
SNUGGERY BREEZE



KC-1302
LOBLOLLY PINE



KC-1303
ETCHINGS MIST



KC-1304
LINE MARKINGS



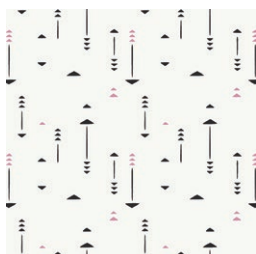
KC-1305
FURRIES SWEET



KC-1306
SNUGGERY WARMTH



KC-1307
LOBLOLLY WOOD



KC-1308
ETCHINGS NECTAR



KC-1309
CUTE CARVINGS



FEEL THE DIFFERENCE © 2019 Courtesy of Art Gallery Quilts LLC. All Rights Reserved.

Snuggling MiSt

FINISHED SIZE | 48 ½" x 60"

FABRIC REQUIREMENTS

Fabric A	KC-1300	¾ yd.
Fabric B	KC-1301	¼ yd.
Fabric C	KC-1302	¼ yd.
Fabric D	KC-1304	¼ yd.
Fabric E	KC-1305	¾ yd.
Fabric F	KC-1306	¼ yd.
Fabric G	KC-1307	¼ yd.
Fabric H	KC-1308	¼ yd.
Fabric I	KC-1309	¼ yd.
Fabric J	KS-100	¼ yd.
Fabric K	KS-105	½ yd.
Fabric L	KS-106	¼ yd.
Fabric M	KS-110	¼ yd.
Fabric N	KS-112	¼ yd.
Fabric O	KS-115	¼ yd.
Fabric P	KS-116	¼ yd.
Fabric Q	KS-119	¼ yd.
Fabric R	KS-125	¾ yd.
Fabric S	KS-128	¼ yd.

BACKING FABRIC

KS-128 2 yds. *(suggested)*

BINDING FABRIC

KS-128 (Fabric **R**) *(included)*

CUTTING DIRECTIONS

¼" seam allowances are included.
WOF means width of fabric.

One (1) Fussy cut Hexie template from fabric **A**

Three (3) Fussy cut triangle templates from fabric **B**. (Two triangles with the tip facing down)

Four (4) triangle templates from fabric **C**.

Eight (8) triangle templates from fabric **D**.

One (1) Fussy cut Hexie template from fabric **E**.

Five (5) triangle templates from fabric **F**. (Three triangles with the tip facing down)

Four (4) triangle templates from fabric **G**.

XXXXXXXXXXXXXXXXXXXXXXXXXXXXXXXXXXXX

Five (5) triangle templates from fabric **H**.

Five (5) triangle templates from fabric **I**.

Seven (7) triangle templates from fabric **J**.

Seventeen (17) triangle templates from fabric **K**.

Twelve (12) triangle templates from fabric **L**.

Seven (7) triangle templates from fabric **M**.

Eleven (11) triangle templates from fabric **N**.

Nine (9) triangle templates from fabric **O**.

Forthteen (14) triangle templates from fabric **P**.

Seven (7) triangle templates from fabric **Q**.

Twelve (12) triangle templates from fabric **R**.

Nine (9) triangle templates from fabric **S**.

CONSTRUCTION

Sew all rights sides together with ¼" seam allowance.

- There are eighteen Hexies made out of triangles that need to be sewn in order to complete this quilt top.
- For the first Hexie take one triangle from fabrics **D Q S P N** and **J**.
- Place Triangles **D Q** and **S** on a row, **D** and **S** triangles should be placed with the tip facing down and **Q** with the tip facing up in between **D** and **S**.
- Attach them together in the order **DQS**.
- set aside.
- Repeat the previous steps with the remaining triangles **P N** and **J**.
- Attach them in the order **PNJ**.
- Place the **DQS** set on top of the **PNJ** set and attach them together creating a hexie.
- Set aside.

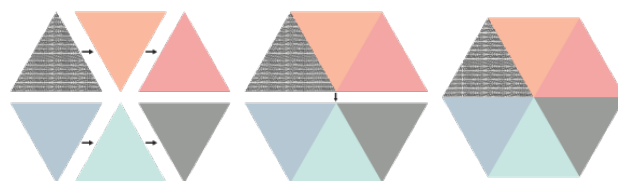


DIAGRAM 1

- Follow the diagram below for the construction of the eighteen Hexies that need to be sewn for the quilt top.

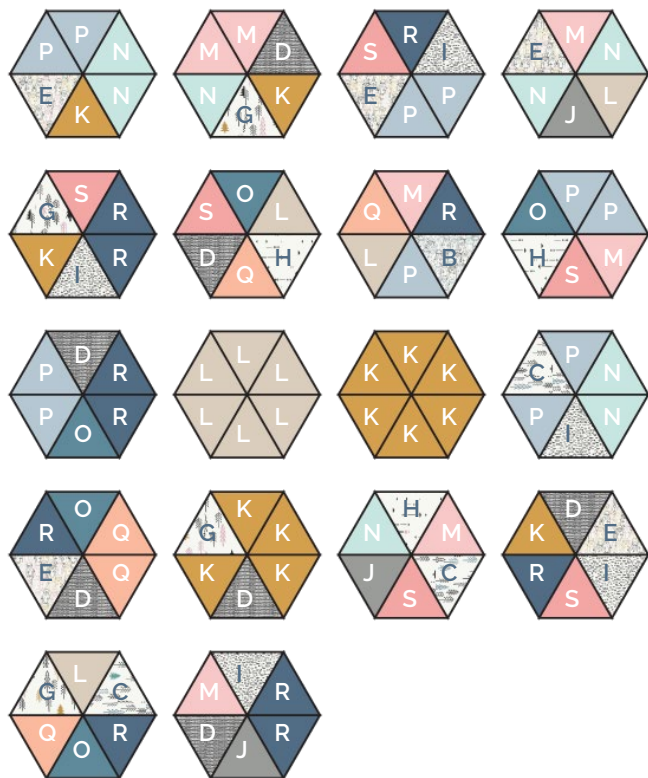



DIAGRAM 2

- There are six half hexies needed for the construction of this quilt top, follow the diagram below for triangles placement.



DIAGRAM 3

- There should be six remaining triangles, attach four of them in pair of two following the diagram below.
- Set aside the two triangles from fabric 

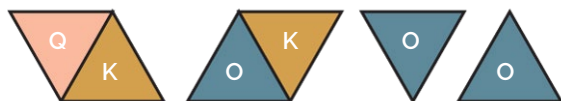


DIAGRAM 4

ASSEMBLING THE TOP

Sew all rights sides together with $\frac{1}{4}$ " seam allowance. Press open.

- Arrange all the pieces as show below.



- Attach the Hexies by columns, leaving $\frac{1}{4}$ " without seam at the beggining and end of each attachment.



- Attach the columns together, and trim it to 48 ½" x 60".



QUILT ASSEMBLY

Sew rights sides together.

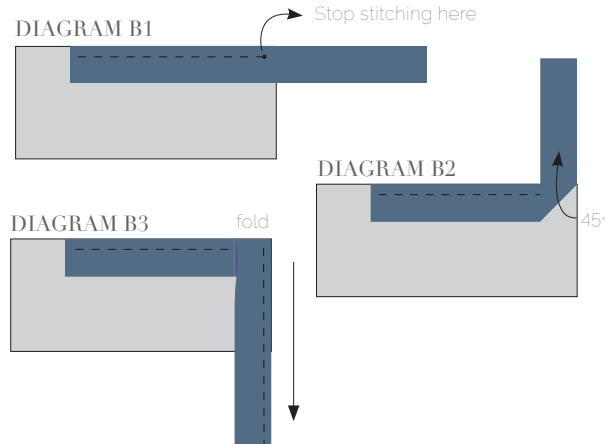
- Place BACKING FABRIC on a large surface wrong side up. Stretch it with masking tape against that surface.
- Place BATTING on top of backing fabric.
- Place TOP on top of the batting with right side facing up. Smooth away wrinkles using your hands.
- Pin all layers together and baste with basting thread, using long stitches. You can also use safety pins to join the layers.
- Machine or hand quilt starting at the center and working towards the corners. Remember that quilting motifs are a matter of personal preference. Have fun choosing yours!
- After you finished, trim excess of any fabric or batting, squaring the quilt to proceed to bind it.

BINDING

Sew rights sides together.

- Cut enough strips 1½" wide by the width of the fabric **R** to make a final strip 227" long. Start sewing the binding strip in the middle of one of the sides of the quilt, placing the strip right side down and leaving an approximated 5" tail. Sew with ¼" seam allowance (using straight stitch), aligning the strip's raw edge with the quilt top's raw edge.

- Stop stitching ¼" before the edge of the quilt (**DIAGRAM B1**). Clip the threads. Remove the quilt from under the machine presser foot. Fold the strip in a motion of 45° and upward, pressing with your fingers (**DIAGRAM B2**). Hold this fold with your finger, bring the strip down in line with the next edge, making a horizontal fold that aligns with the top edge of the quilt (**DIAGRAM B3**). Start sewing at ¼" of the border, stitching all the layers. Do the same in the four corners of the quilt.
- Stop stitching before you reach the last 5 or 6 inches. Cut the threads and remove the quilt from under the machine presser foot. Lay the loose ends of the binding flat along the quilt edge, folding the ends back on themselves where they meet. Press them together to form a crease. Using this crease as the stitching line, sew the two open ends of the binding with right sides together (you can help yourself marking with a pencil if the crease is difficult to see).
- Trim seam to ¼" and press open. Complete the sewing. Turn binding to back of the quilt, turn raw edge inside and stitch by hand using blind stitch.





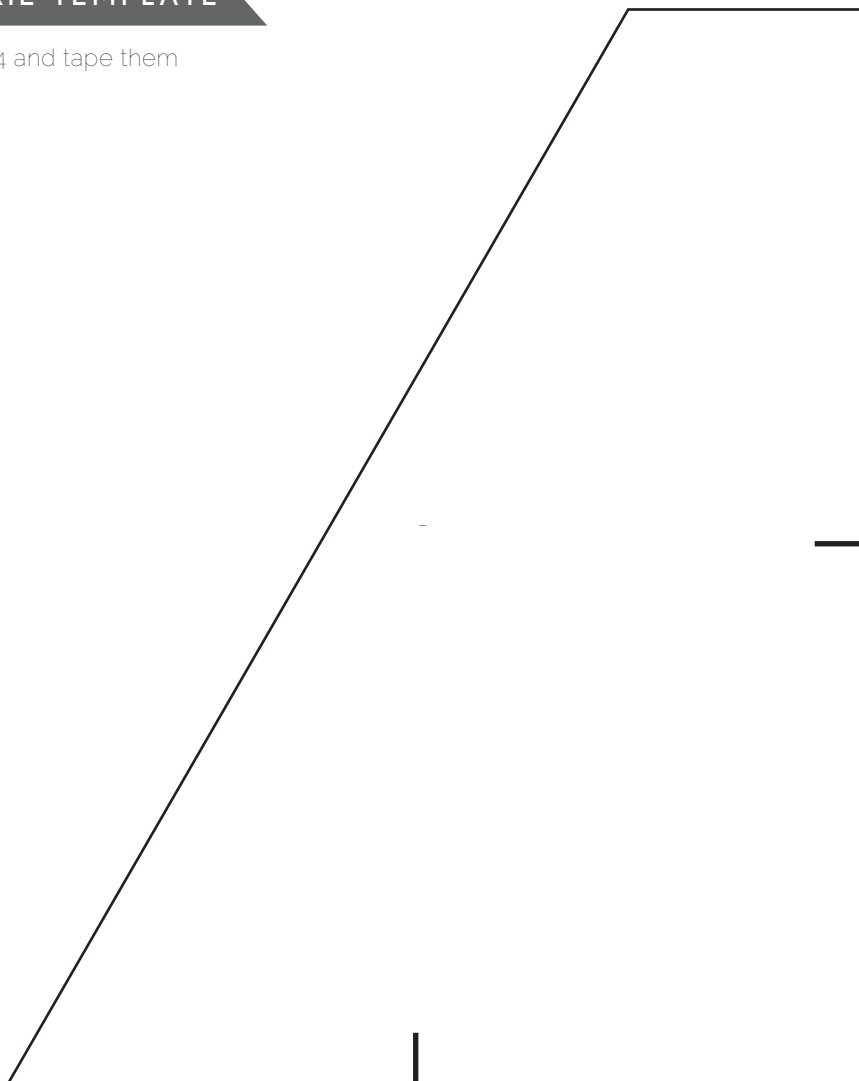
artgalleryfabrics.com

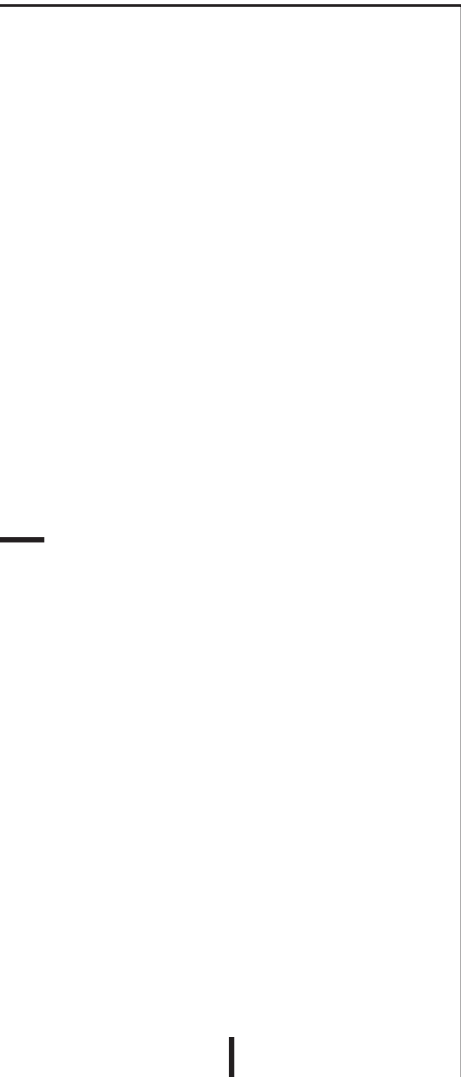
NOTE: While all possible care has been taken to ensure the accuracy of this pattern, We are not responsible for printing errors or the way in which individual work varies. Please read instructions carefully before starting the construction of this quilt. If desired, wash and iron your fabrics before starting to cut.

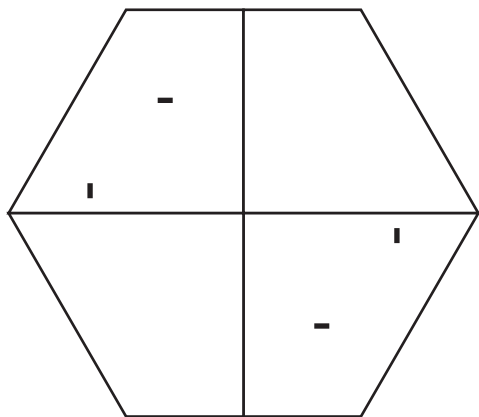
© 2019 Courtesy of Art Gallery Quilts LLC. All Rights Reserved.

HEXIE TEMPLATE

Cut 4 and tape them









TRIANGLE TEMPLATE

