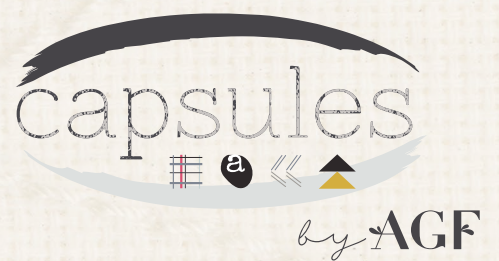


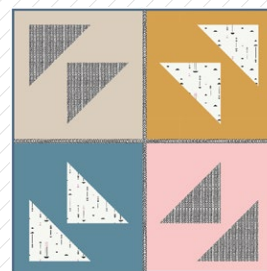
X
X
X
X
X
X
X
X
X
X
X
X



x x x x x x x x x x x x x x x x x x

PlayTime

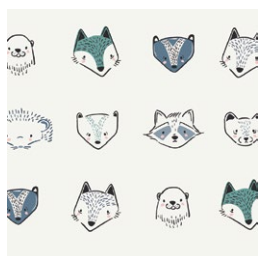
AGFstudio



pine LULLABY

FABRICS DESIGNED BY AGF STUDIO

COLOR OPTION



KC-1300
FURRIES COOL



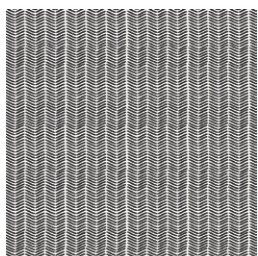
KC-1301
SNUGGERY BREEZE



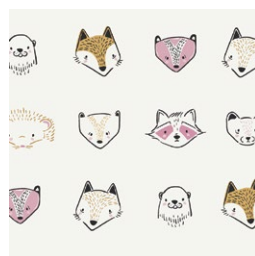
KC-1302
LOBLOLLY PINE



KC-1303
ETCHINGS MIST



KC-1304
LINE MARKINGS



KC-1305
FURRIES SWEET



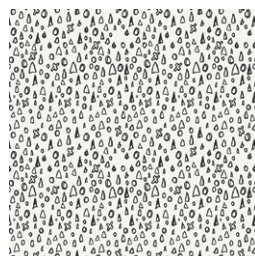
KC-1306
SNUGGERY WARMTH



KC-1307
LOBLOLLY WOOD

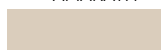


KC-1308
ETCHINGS NECTAR

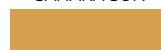


KC-1309
CUTE CARVINGS

KS-106
AMARATH



KS-105
SAHARA SUN



KS-115
BUNA BLUE



KS-110
CRYSTAL PINK



FEEL THE DIFFERENCE © 2019 Courtesy of Art Gallery Quilts LLC. All Rights Reserved.

PlayTime

FINISHED SIZE | 30" x 30"

FABRIC REQUIREMENTS

Fabric A	KC-1304	¼ yd.
Fabric B	KC-1308	¼ yd.
Fabric C	KS-106	½ yd.
Fabric D	KS-105	½ yd.
Fabric E	KS-115	⅔ yd.
Fabric F	KS-110	½ yd.

BACKING FABRIC

KC-1304 1 ⅙ yds. (suggested)

BINDING FABRIC

KS-115 (Fabric **E**) (included)

ADDITIONAL MATERIAL

Easy-Knit Fusible Interfacing

CUTTING DIRECTIONS

¼" seam allowances are included.
WOF means width of fabric.

Two (2) 7½" x 7½" squares from Fabrics **A, B**

One (1) 15½" x 15½" square from Fabrics **C, D, E, F**

Two (2) ½" x 30 ½" strips from Fabric **A**

CONSTRUCTION

Sew all rights sides together with ¼" seam allowance.

- Assemble Fabric **C, D, E, F** together as in the Diagram below.



DIAGRAM 1

- For Fabric **A** and **B** squares, cut at the diagonal.

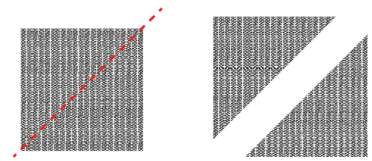


DIAGRAM 2

- Place one Fabric **A** half square on Fabric **C** block ¾" distance from the top left side and upper side.
- Pin your piece and baste stitch for better result.
- Measure the same amount of distance from the center of your unit and place your second half square.
- Pin your piece and baste stitch for better result.

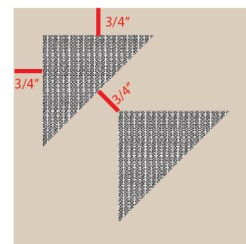


DIAGRAM 3

- Repeat the same for all four sides.
- Once you are satisfied with the unit positions, use zig zag stitch for edges, leaving about 2" of opening.
- Fill the triangles with pillow filling, then close the opening with zig zag stitch.

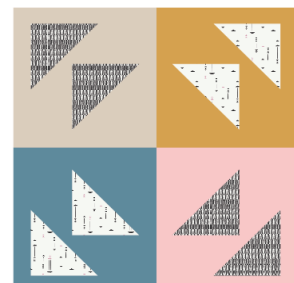


DIAGRAM 4

- Take your Fabric **A** strip and place on top of the seams.
- Top stitch close to the edges but far enough for the edges later curls up bit.
- Use straight stitch or zig zag stitch.

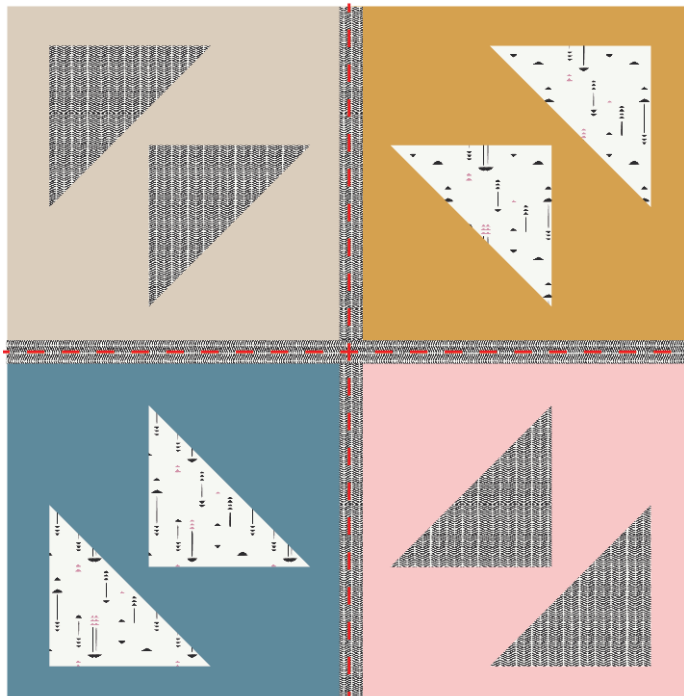


DIAGRAM 5

PLAY MAT ASSEMBLY

Sew rights sides together.

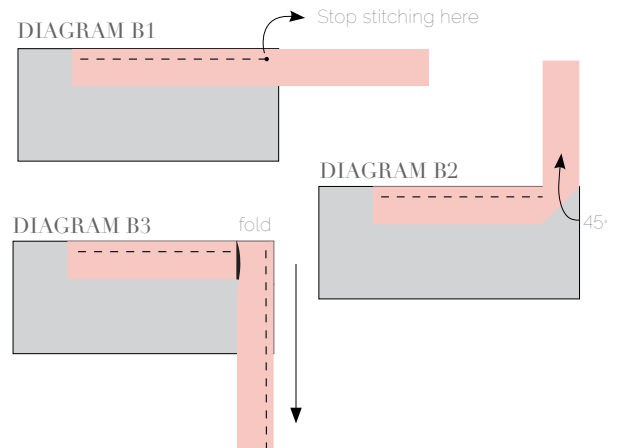
- Place BACKING FABRIC on a large surface wrong side up. Stretch it with masking tape against that surface.
- Place BATTING on top of backing fabric.
- Place easy-knit fusible interfacing on the wrong side of the backing fabric and on the wrong side of the top.
- Place TOP on top of the batting with right side facing up. Smooth away wrinkles using your hands.
- Pin all layers together and baste with basting thread, using long stitches. You can also use safety pins to join the layers.
- Machine or hand quilt starting at the center and working towards the corners. Remember that quilting motifs are a matter of personal preference. Have fun choosing yours!
- After you finished, trim excess of any fabric or batting, squaring the play mat to proceed to bind it.

BINDING

Sew rights sides together.

- Cut enough strips $1\frac{1}{2}$ ' wide by the width of the fabric **E** to make a final strip 100' long. Start sewing the binding strip in the middle of one of the sides of the quilt, placing the strip right side down and leaving an approximated 5' tail. Sew with $\frac{1}{4}$ ' seam allowance (using straight stitch), aligning the strip's raw edge with the quilt top's raw edge.
- Stop stitching $\frac{1}{4}$ ' before the edge of the quilt (**DIAGRAM B 1**). Clip the threads. Remove the play mat from under the machine presser foot. Fold the strip in a motion of 45° and upward, pressing with your fingers (**DIAGRAM B2**). Hold this fold with your finger, bring the strip down in line with the next edge, making a horizontal fold that aligns with the top edge of the quilt (**DIAGRAM B3**). Start sewing at $\frac{1}{4}$ ' of the border, stitching all the layers. Do the same in the four corners of the play mat.

- Stop stitching before you reach the last 5 or 6 inches. Cut the threads and remove the quilt from under the machine presser foot. Lay the loose ends of the binding flat along the quilt edge, folding the ends back on themselves where they meet. Press them together to form a crease. Using this crease as the stitching line, sew the two open ends of the binding with right sides together (you can help yourself marking with a pencil if the crease is difficult to see).
- Trim seam to $\frac{1}{4}$ " and press open. Complete the sewing. Turn binding to back of the quilt, turn raw edge inside and stitch by hand using blind stitch.



artgalleryfabrics.com

NOTE: While all possible care has been taken to ensure the accuracy of this pattern, We are not responsible for printing errors or the way in which individual work varies. Please read instructions carefully before starting the construction of this quilt. If desired, wash and iron your fabrics before starting to cut.

© 2019 Courtesy of Art Gallery Quilts LLC. All Rights Reserved.