

## A vibrant, quilted bag featuring a large, stylized owl face. The owl's face is white with black dot patterns, large green eyes with orange borders and pink stitching, and a pink beak. The bag is primarily pink with black and white patterned side panels and a black strap with a metal clasp.

XXXXXXXXXXXXXXXXXXXXXXXXXXXX

A DIVISION OF AGF



# Owly



Lugu

FABRICS DESIGNED  
BY JESSICA SWIFT

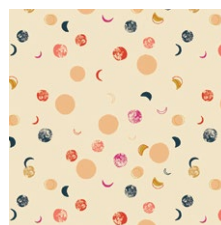
DAY BREAK



LGU-67100  
SOVA DAYGLOW



LGU-67102  
SLEEP TIGHT DAYDREAM



LGU-67103  
LUMINA DAWN



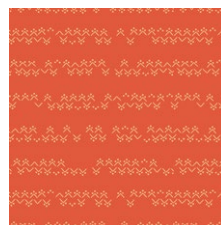
LGU-67104  
ODYSSEY AURORA



LGU-67105  
EFFLORESCENT VIVID



LGU-67101  
KONSTELACIJA MAAGIA



LGU-67106  
TEKSTIIL EMBERGLOW

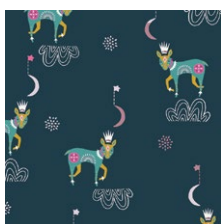


LGU-67107  
NAKTIS VIRIDIS

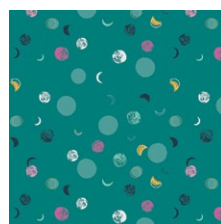
ULTRA VIOLET



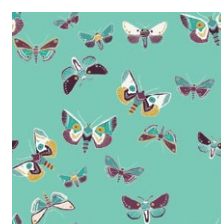
LGU-57100  
SOVA NIGHTLIGHT



LGU-57102  
SLEEP TIGHT NIGHTFALL



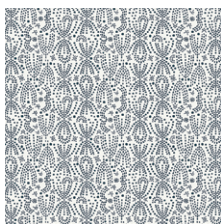
LGU-57103  
LUMINA DUSK



LGU-57104  
ODYSSEY DEWDROP



LGU-57105  
EFFLORESCENT OPULENT



LGU-57101  
KONSTELACIJA VALGE



LGU-57106  
TEKSTIIL SOLARFLAME



LGU-57107  
NAKTIS CIRSIUM



FEEL THE DIFFERENCE © 2019 Courtesy of Art Gallery Quilts LLC. All Rights Reserved.



FINISHED SIZE | 12" x 8"

## FABRIC REQUIREMENTS

Fabric A	LGU-67101	F8
Fabric B	PE-439	F8
Fabric C	LGU-57101	F8
Fabric D	PE-463	F8
Fabric E	PE-450	F8

ADDITIONAL MATERIAL  
Steam-a-seam double fusible  
tape.

## CUTTING DIRECTIONS

*1/4" seam allowances are included.  
WOF means width of fabric.*

- Two (2) 8 1/2" x 2 1/2" strips from Fabric A
- One (1) 8 1/2" x 12 1/2" rectangle from Fabric A
- One (1) 8 1/2" x 9 1/2" rectangle from Fabric B
- One (1) of Template 1 from Fabric C
- One (1) of Template 2 from Fabric D
- Two (2) of Template 3 from Fabric D
- One (1) of Template 5 from Fabric D
- Two (2) of Template 4 from Fabric E

## CONSTRUCTION

*Sew all rights sides together with 1/4" seam allowance.*

- Place Template 1, 2 and 5 as diagram below.



DIAGRAM 1

- Now, take Template 4 and 5.



DIAGRAM 2

- Top stitch your pieces so it is better secured.
- Take Fabric A rectangle strips and pair them on each side of the main unit



DIAGRAM 3

## Zipper Construction

Insert your zipper foot-

- Take lining and fabric **A** 8½" x 12½" rectangle and sandwich them inbetween your 12" zipper.
- Using a zipper foot sew as close to the zipper teeth as possible.
- Sew the two pieces of fabric with right sides together with the zipper sandwiched inbetween the two pieces of fabric (Diagram 1.1 and 1.2)
- Press fabric away from zipper and edge stitch the seam allowance to the lining sewing as close the edge as possible..
- Repeat process for the other side of the zipper using your other lining piece and your fabric **A** 8½" x 12½" rectangle.

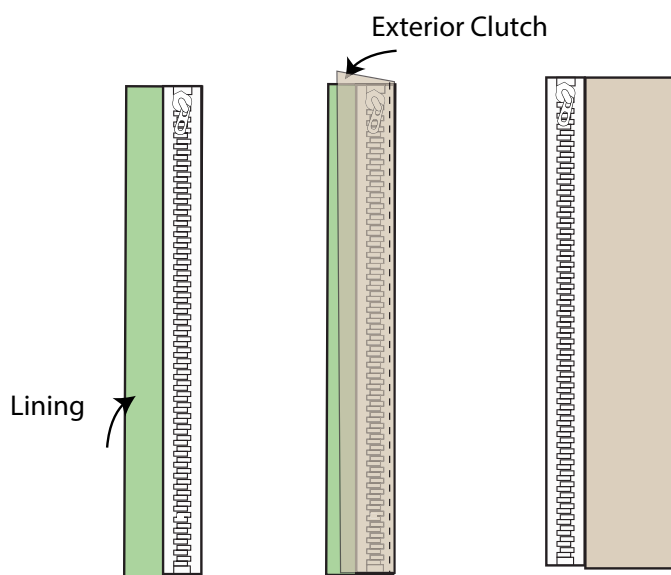


DIAGRAM 1.1

DIAGRAM 1.2

DIAGRAM 1.3

- Unzip zipper. Take the two fronts of the clutch and pin right sides together.
- Take the lining pieces and pin right sides together.
- Sew all the way around bag leaving a unsewn portion in the bottom of the lining of the clutch.
- Pull right side of the fabric through the unsewn portion. Hand stitch or machine stitch unsewn portion closed.



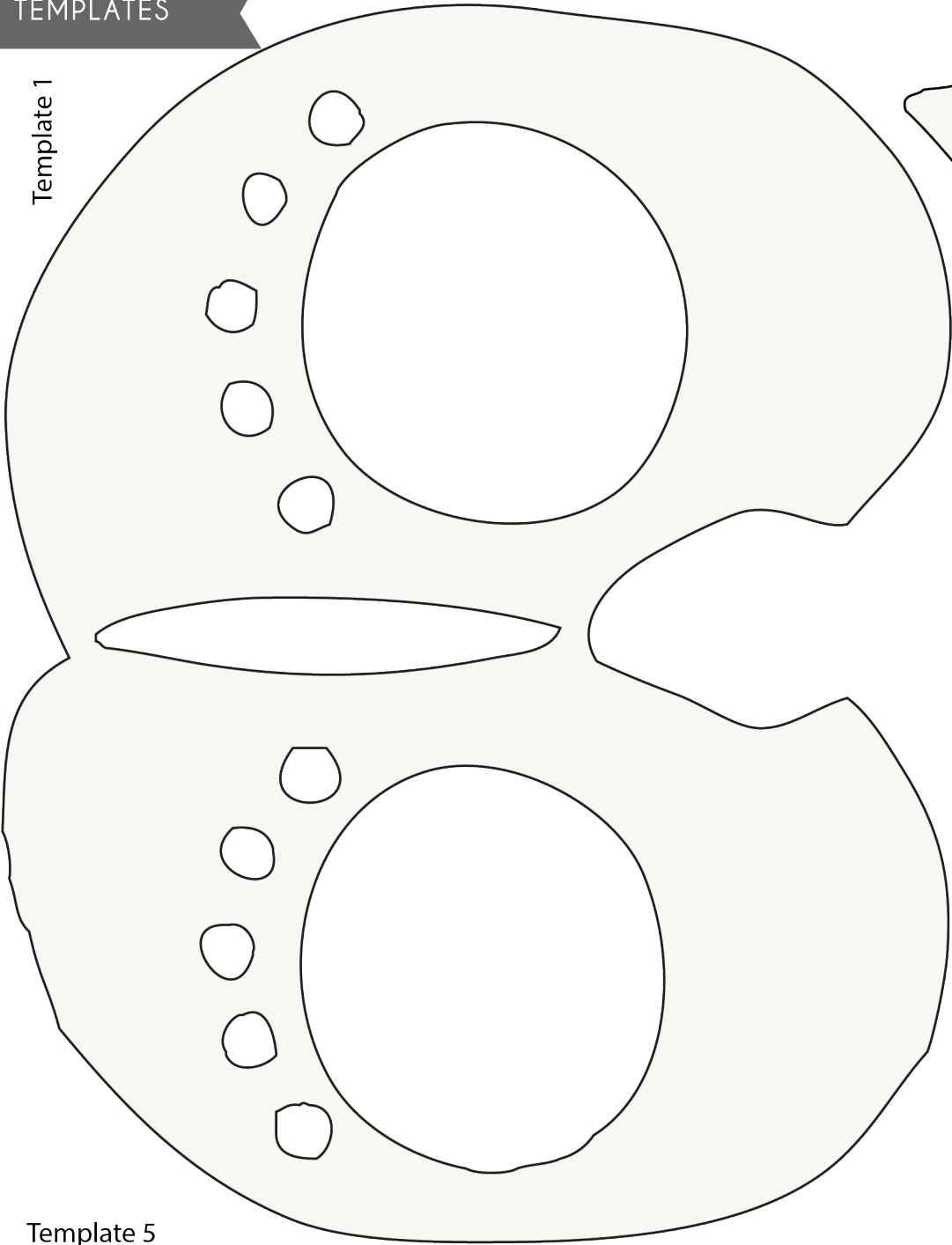
[artgalleryfabrics.com](http://artgalleryfabrics.com)

NOTE: While all possible care has been taken to ensure the accuracy of this pattern, We are not responsible for printing errors or the way in which individual work varies. Please read instructions carefully before starting the construction of this quilt. If desired, wash and iron your fabrics before starting to cut.

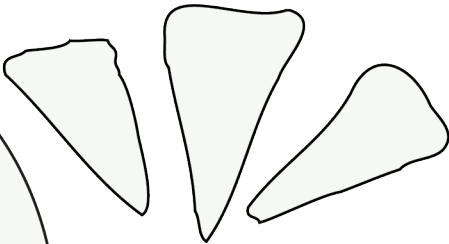


TEMPLATES

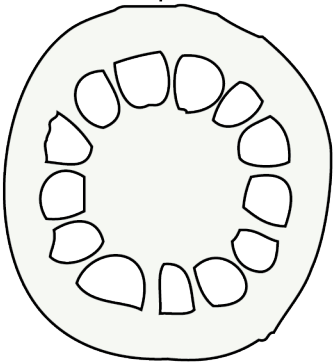
Template 1



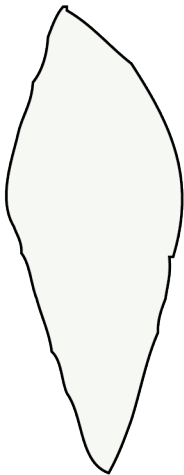
Template 2



Template 3



Template 5



Template 4

