

A vibrant, repeating geometric pattern composed of overlapping circles and diamonds. The design is set against a dark grey background. The primary colors used are a deep blue, a bright green, a fiery red, a sunny yellow, and a light grey. The pattern is organized into a grid-like structure where each circle is divided into four segments by two perpendicular lines, creating a diamond shape in the center. The colors of these segments and the surrounding circles vary, creating a complex, interlocking visual effect. The overall composition is balanced and visually striking due to the high contrast between the bright colors and the dark background.

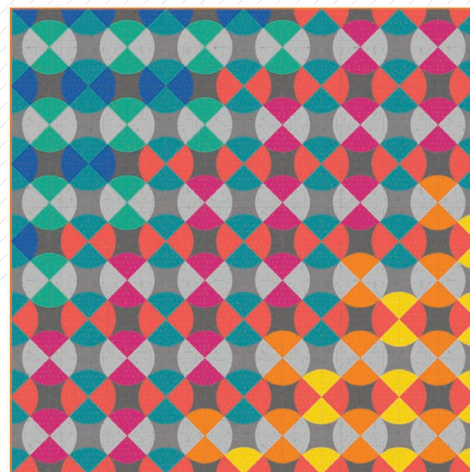


QUILT DESIGNED BY AGF STUDIO

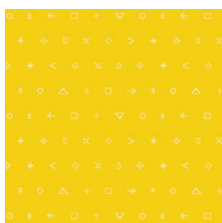
↑CON Elements

decostitch Elements

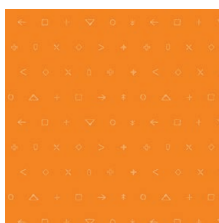
FABRICS DESIGNED BY ART GALLERY FABRICS



ICON



ICE-200
GOLDEN TOKEN



ICE-201
COQUELICOT FIRE



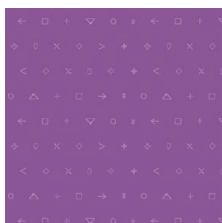
ICE-202
CORAL EMBLEM



ICE-203
APPLE POP



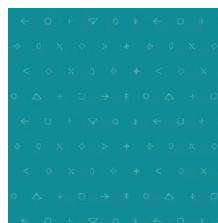
ICE-204
WATERMELON BAR



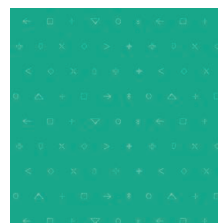
ICE-205
TITAN VIOLET



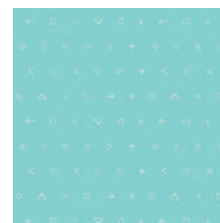
ICE-206
COBALT STAR



ICE-207
LEGEND LAKE



ICE-208
JADE ARROW



ICE-209
CHARACTER SKY

DECOSTITCH



DSE-700
CLOUD



DSE-701
PORCINI



DSE-702
REFLECTION



DSE-703
GRANITE



DSE-704
SHADOW



DSE-705
MORNING MOSS



DSE-706
SUNGLOW



DSE-707
ORCHIDBERRY



DSE-708
INDIGO SKY



DSE-709
STELLAR



FEEL THE DIFFERENCE © 2019 Courtesy of Art Gallery Quilts LLC. All Rights Reserved.



FINISHED SIZE | 85" x 85"

FABRIC REQUIREMENTS

Fabric A	ICE-200	½ yd.
Fabric B	ICE-201	⅞ yd.
Fabric C	ICE-202	1⅝ yd.
Fabric D	ICE-204	⅞ yd.
Fabric E	ICE-206	½ yd.
Fabric F	ICE-207	1⅝ yd.
Fabric G	ICE-208	½ yd.
Fabric H	DSE-702	1¾ yd.
Fabric I	DSE-703	2⅞ yd.
Fabric J	DSE-704	3¼ yd.

BINDING FABRIC

Fabric **B** ICE-201 *(Included)*

BACKING FABRIC

DSE-702 6 yds. *(Suggested)*

CUTTING DIRECTIONS

¼" seam allowances are included.
WOF means width of fabric.

- Sixteen (16) 5½" x 5½" squares from fabric **A**.
- Twenty (20) 5½" x 5½" squares from fabric **B**.
- Sixty seven (67) 5½" x 5½" squares from fabric **C**.
- Thirty two (32) 5½" x 5½" squares from fabric **D**.
- Fifteen (15) 5½" x 5½" squares from fabric **E**.
- Sixty eight (68) 5½" x 5½" squares from fabric **F**.
- Nineteen (29) 5½" x 5½" squares from fabric **G**.
- Seventy two (72) 5½" x 5½" squares from fabric **H**.
- Thirty nine (39) 10½" x 10½" squares from fabric **I**.
- Forty one (41) 10½" x 10½" squares from fabric **J**.

- Take **template a** and trim all the squares from fabrics **A, B, C, D, E, F, G,** and **H**.
- Take **template b** and trim thirty (30) squares from fabrics **I** and **J**.
- Take **template c** and trim twelve (12) squares from fabrics **I** and **J**.

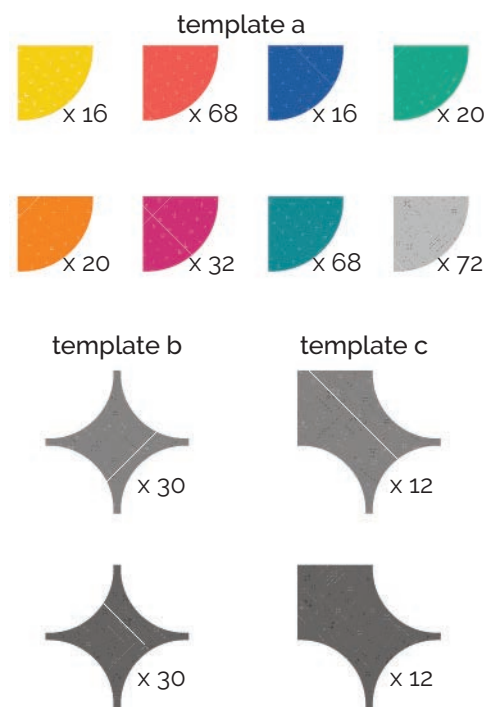


DIAGRAM 1

CONSTRUCTION

Sew all rights sides together with ¼" seam allowance.

- Join **templates a** to **templates b** and **c** following the diagram to make the blocks:

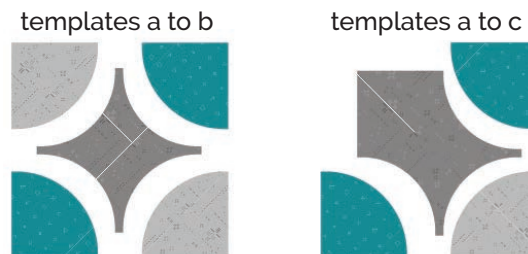


DIAGRAM 2



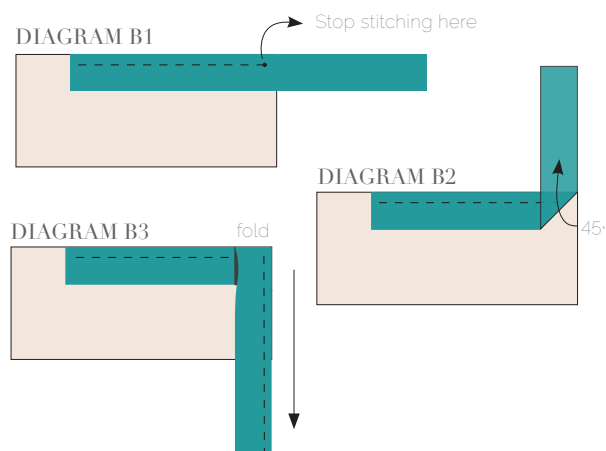
- artgalleryfabrics.com

QUILT ASSEMBLY

Sew rights sides together.

- Place BACKING FABRIC on a large surface wrong side up. Stretch it with masking tape against that surface.
- Place BATTING on top of backing fabric.
- Place TOP on top of the batting with right side facing up. Smooth away wrinkles using your hands.
- Pin all layers together and baste with basting thread, using long stitches. You can also use safety pins to join the layers.
- Machine or hand quilt starting at the center and working towards the corners. Remember that quilting motifs are a matter of personal preference. Have fun choosing yours!
- After you finished, trim excess of any fabric or batting, squaring the quilt to proceed to bind it.

- XX
- Stop stitching before you reach the last 5 or 6 inches. Cut the threads and remove the quilt from under the machine presser foot. Lay the loose ends of the binding flat along the quilt edge, folding the ends back on themselves where they meet. Press them together to form a crease. Using this crease as the stitching line, sew the two open ends of the binding with right sides together (you can help yourself marking with a pencil if the crease is difficult to see).
 - Trim seam to $\frac{1}{4}$ " and press open. Complete the sewing. Turn binding to back of the quilt, turn raw edge inside and stitch by hand using blind stitch.



BINDING

Sew rights sides together.

- Cut enough strips $1\frac{1}{2}$ " wide by the width of the fabric **B** to make a final strip 350" long. Start sewing the binding strip in the middle of one of the sides of the quilt, placing the strip right side down and leaving an approximated 5" tail. Sew with $\frac{1}{4}$ " seam allowance (using straight stitch), aligning the strip's raw edge with the quilt top's raw edge.
- Stop stitching $\frac{1}{4}$ " before the edge of the quilt (DIAGRAM B 1). Clip the threads. Remove the quilt from under the machine presser foot. Fold the strip in a motion of 45° and upward, pressing with your fingers (DIAGRAM B2). Hold this fold with your finger, bring the strip down in line with the next edge, making a horizontal fold that aligns with the top edge of the quilt (DIAGRAM B3). Start sewing at $\frac{1}{4}$ " of the border, stitching all the layers. Do the same in the four corners of the quilt.



artgalleryfabrics.com

NOTE: While all possible care has been taken to ensure the accuracy of this pattern, We are not responsible for printing errors or the way in which individual work varies. Please read instructions carefully before starting the construction of this quilt. If desired, wash and iron your fabrics before starting to cut.

© 2019 Courtesy of Art Gallery Quilts LLC. All Rights Reserved.

TEMPLATES

