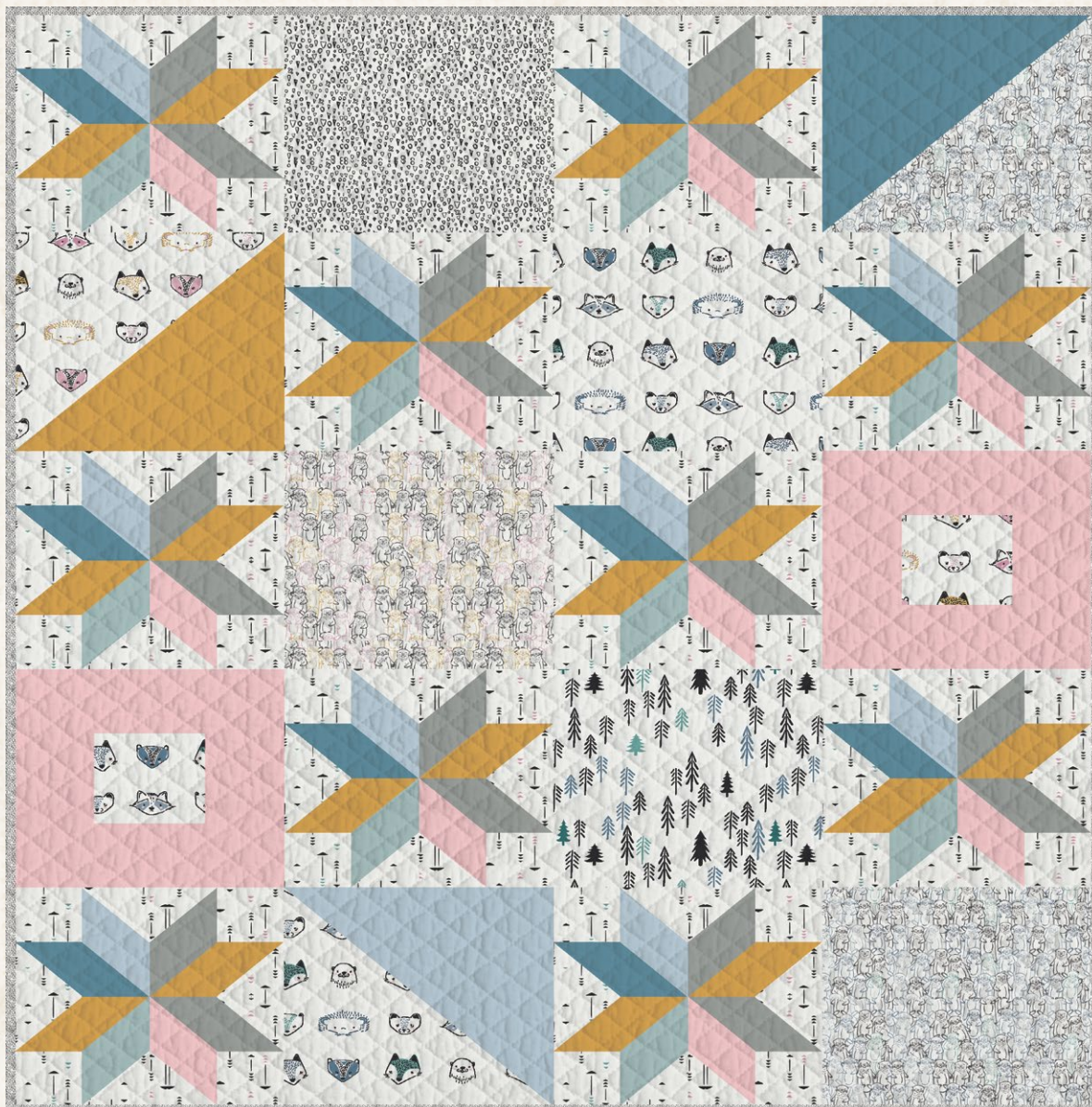


CUDDLES & CONES



capsules
by AGF

FREE PATTERN

XXXXXXXXXXXXXXXXXXXXXXXXXXXX

CUDDLES & CONES

QUILT DESIGNED BY AGF STUDIO

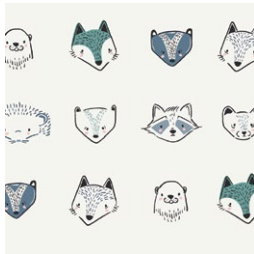
AGFstudio

pine LULLABY

FABRICS DESIGNED BY AGF STUDIO



COLOR OPTION



KC-1300
FURRIES COOL



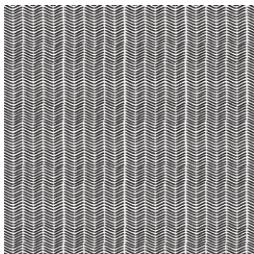
KC-1301
SNUGGERY BREEZE



KC-1302
LOBLOLLY PINE



KC-1303
ETCHINGS MIST



KC-1304
LINE MARKINGS



KC-1305
FURRIES SWEET



KC-1306
SNUGGERY WARMTH



KC-1307
LOBLOLLY WOOD



KC-1308
ETCHINGS NECTAR



KC-1309
CUTE CARVINGS



FEEL THE DIFFERENCE © 2019 Courtesy of Art Gallery Quilts LLC. All Rights Reserved.

CUDDLES & CONES

FINISHED SIZE | 48" x 60"

FABRIC REQUIREMENTS

| | | |
|-----------------|---------|-------------------|
| Fabric A | KC-1308 | $\frac{3}{4}$ yd. |
| Fabric B | KC-1309 | $\frac{3}{8}$ yd. |
| Fabric C | KC-1306 | $\frac{3}{8}$ yd. |
| Fabric D | KC-1301 | $\frac{3}{8}$ yd. |
| Fabric E | KC-1300 | $\frac{3}{8}$ yd. |
| Fabric F | KC-1305 | $\frac{3}{8}$ yd. |
| Fabric G | KS-105 | $\frac{3}{8}$ yd. |
| Fabric H | KS-116 | $\frac{3}{8}$ yd. |
| Fabric I | KS-115 | $\frac{3}{8}$ yd. |
| Fabric J | KS-117 | $\frac{1}{8}$ yd. |
| Fabric K | KS-110 | $\frac{1}{4}$ yd. |
| Fabric L | KS-100 | $\frac{1}{3}$ yd. |

BACKING FABRIC

KC-1304 2 $\frac{1}{4}$ yds. *(suggested)*

BINDING FABRIC

KC-1309 (Fabric **B**) *(included)*

CUTTING DIRECTIONS

$\frac{1}{4}$ " seam allowances are included.
WOF means width of fabric.

Forty (40) $3\frac{1}{2}$ " squares from fabric **A**

Forty (40) $3\frac{7}{8}$ " squares from fabric **A**.

Two (2) $12\frac{1}{2}$ " squares from fabric **B**.

One (1) $12\frac{1}{2}$ " square from fabric **C**.

One (1) $12\frac{1}{2}$ " square from fabric **D**.

One (1) $12\frac{7}{8}$ " square from fabric **C**.

One (1) $12\frac{1}{2}$ " square from fabric **E**.

One (1) $12\frac{7}{8}$ " square from fabric **E**.

One (1) $5\frac{1}{2}$ " square from fabric **E**. *(fussy cut your favorite part)*

XXXXXXXXXXXXXXXXXXXXXXXXXXXXXXXXXXXX

One (1) $12\frac{7}{8}$ " square from fabric **F**.

One (1) $5\frac{1}{2}$ " square from fabric **F**. *(fussy cut your favorite part)*

One (1) $12\frac{7}{8}$ " square from fabric **G**.

Twenty (20) $3\frac{7}{8}$ " squares from fabric **G**.

One (1) $12\frac{7}{8}$ " square from fabric **H**.

Ten (10) $3\frac{7}{8}$ " squares from fabric **H**.

One (1) $12\frac{7}{8}$ " square from fabric **I**.

Ten (10) $3\frac{7}{8}$ " squares from fabric **I**.

Ten (10) $3\frac{7}{8}$ " squares from fabric **J**.

Ten (10) $3\frac{7}{8}$ " squares from fabric **K**.

Two (2) $5\frac{1}{2}$ " x 4" strips from fabric **K**.

Two (2) $12\frac{1}{2}$ " x 4" strips from fabric **K**.

Twenty (20) $3\frac{7}{8}$ " squares from fabric **L**.

Two (2) $5\frac{1}{2}$ " x 4" strips from fabric **L**.

Two (2) $12\frac{1}{2}$ " x 4" strips from fabric **L**.

CONSTRUCTION

Sew all rights sides together with $\frac{1}{4}$ " seam allowance.

- For this quilt top we are making ten star blocks, in order to complete one block take four $3\frac{1}{2}$ " squares from fabric **A**, four $3\frac{7}{8}$ " squares from fabric **A**, two $3\frac{7}{8}$ " squares from fabric **G** and **L**, One $3\frac{7}{8}$ " square from fabrics **H I J** and **K**.
- The star block is made up of 3" (finished) HST in different combinations
- To start with the HST cut in half diagonally all the $3\frac{7}{8}$ " squares from the mentioned fabrics.
- Since this is a knit make sure you are not pulling the fabrics while joining them.
- Attach the following combinations for HST.

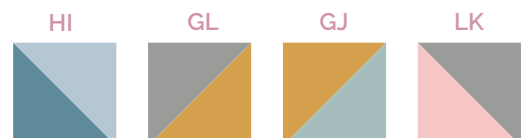




DIAGRAM 1

- Make two HST for each of the following combinations.

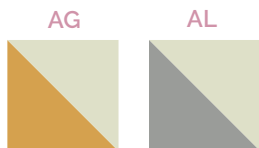


DIAGRAM 2

- Now that all the HST needed are sewn together start attaching the pieces that complete the block following the diagram below.
- Use the $3\frac{1}{2}$ " squares from fabric A for the four corners.

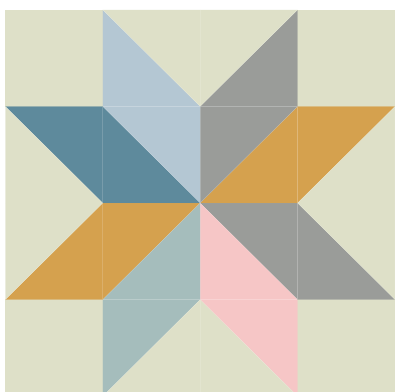


DIAGRAM 3

- You need a total of ten star blocks in order to complete this quilt top, sew nine more and set aside.
- there are three 12" (finished) HST combinations needed for the top.
- Using the $12\frac{7}{8}$ " squares from fabrics DEFGHI sew the following combinations.
- Set aside



DIAGRAM 4

XXXXXXXXXXXXXXXXXXXXXXXXXXXX

- There is one more block to go, now you need to make two different combinations of a lock cabin.
- For the first combination take one $5\frac{1}{2}$ " square from fabric F, Two (2) $5\frac{1}{2}$ " x 4" strips from fabric K and Two (2) $12\frac{1}{2}$ " x 4" strips from fabric K.
- Attach the $5\frac{1}{2}$ " square from fabric F in between two $5\frac{1}{2}$ " x 4" strips from fabric K
- **KFK**
- Then take the two $12\frac{1}{2}$ " x 4" strips from fabric K and attach them to both (left and right sides) of the **KFK** piece.

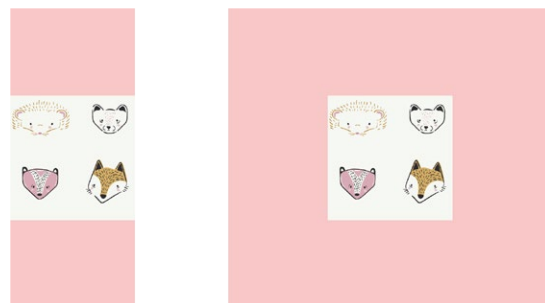


DIAGRAM 5

- For the Last combination take one $5\frac{1}{2}$ " square from fabric E, Two (2) $5\frac{1}{2}$ " x 4" strips from fabric L and Two (2) $12\frac{1}{2}$ " x 4" strips from fabric L.
- Attach the $5\frac{1}{2}$ " square from fabric E in between two $5\frac{1}{2}$ " x 4" strips from fabric L
- **LEL**
- Then take the two $12\frac{1}{2}$ " x 4" strips from fabric L and attach them to both (left and right sides) of the **LEL** piece.

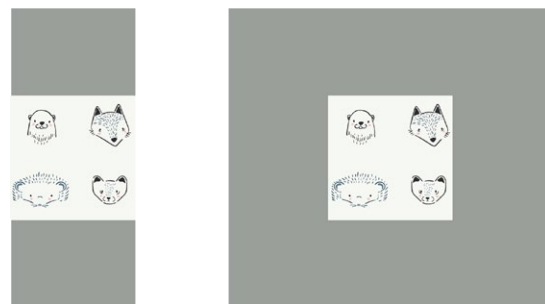


DIAGRAM 6

ASSEMBLING THE TOP

Sew all rights sides together with $\frac{1}{4}$ " seam allowance. Press open.

- Now that all the blocks are sewn together refer to the cover picture for rows and blocks placement.
- There is a total of five rows with four blocks each one.

QUILT ASSEMBLY

Sew rights sides together.

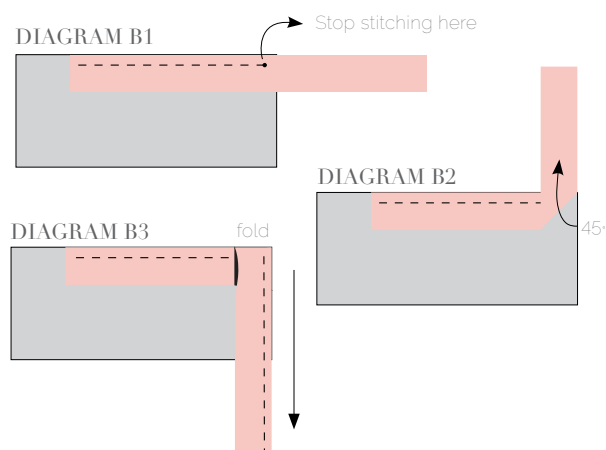
- Place BACKING FABRIC on a large surface wrong side up. Stretch it with masking tape against that surface.
- Place BATTING on top of backing fabric.
- Place TOP on top of the batting with right side facing up. Smooth away wrinkles using your hands.
- Pin all layers together and baste with basting thread, using long stitches. You can also use safety pins to join the layers.
- Machine or hand quilt starting at the center and working towards the corners. Remember that quilting motifs are a matter of personal preference. Have fun choosing yours!
- After you finished, trim excess of any fabric or batting, squaring the quilt to proceed to bind it.

BINDING

Sew rights sides together.

- Cut enough strips $1\frac{1}{2}$ ' wide by the width of the fabric **B** to make a final strip 226' long. Start sewing the binding strip in the middle of one of the sides of the quilt, placing the strip right side down and leaving an approximated 5' tail. Sew with $\frac{1}{4}$ ' seam allowance (using straight stitch), aligning the strip's raw edge with the quilt top's raw edge.
- Stop stitching $\frac{1}{4}$ ' before the edge of the quilt (**DIAGRAM B 1**). Clip the threads. Remove the quilt from under the machine presser foot. Fold the strip in a motion of 45° and upward, pressing with your fingers (**DIAGRAM B2**). Hold this fold with your finger, bring the strip down in line with the next edge, making a horizontal fold that aligns with the top edge of the quilt (**DIAGRAM B3**). Start sewing at $\frac{1}{4}$ ' of the border, stitching all the layers. Do the same in the four corners of the quilt.

- Stop stitching before you reach the last 5 or 6 inches. Cut the threads and remove the quilt from under the machine presser foot. Lay the loose ends of the binding flat along the quilt edge, folding the ends back on themselves where they meet. Press them together to form a crease. Using this crease as the stitching line, sew the two open ends of the binding with right sides together (you can help yourself marking with a pencil if the crease is difficult to see).
- Trim seam to $\frac{1}{4}$ ' and press open. Complete the sewing. Turn binding to back of the quilt, turn raw edge inside and stitch by hand using blind stitch.



artgalleryfabrics.com

NOTE: While all possible care has been taken to ensure the accuracy of this pattern, We are not responsible for printing errors or the way in which individual work varies. Please read instructions carefully before starting the construction of this quilt. If desired, wash and iron your fabrics before starting to cut.

© 2019 Courtesy of Art Gallery Quilts LLC. All Rights Reserved.