

XXXXXX

A vibrant, multi-colored quilted cushion with a geometric star pattern, leaning against a grey wall and a blue-painted wooden post. The cushion features a complex design of triangles in shades of pink, yellow, green, blue, and black, creating a starburst effect. It is bordered by a wide, light-colored fabric strip. The cushion is positioned against a textured grey wall, with a bright blue-painted wooden post visible on the right side. The overall scene is set outdoors on a concrete surface.

XXXXXXXXXXXXXXXXXXXXXXXXXXXX

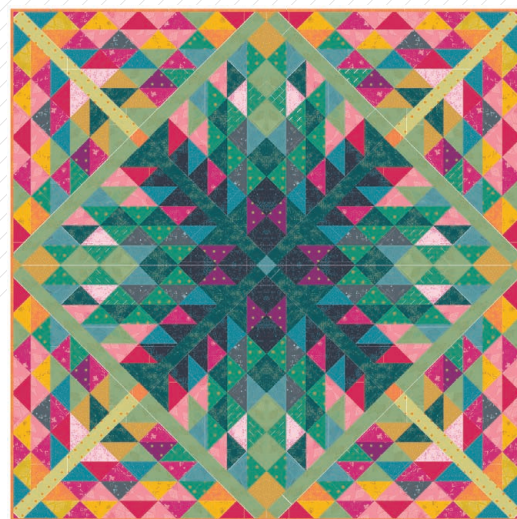


thoughts

QUILT DESIGNED BY AGF STUDIO

«Matchmade»

FABRICS DESIGNED BY PAT BRAVO



TO BERRY



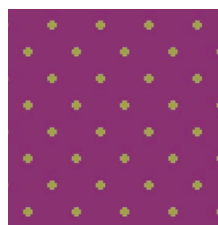
MTM-9100
INDICATION BERRY



MTM-9101
THOUGHTS BERRY



MTM-9102
QUARTZ BERRY

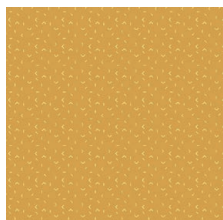


MTM-9103
POSITIVITY



MTM-9104
EXPRESSIONS BERRY

TO GOLD



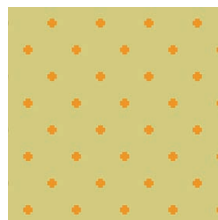
MTM-9200
INDICATION GOLD



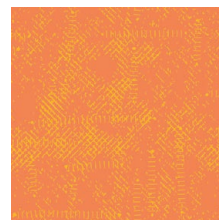
MTM-9201
THOUGHTS GOLD



MTM-9202
QUARTZ GOLD

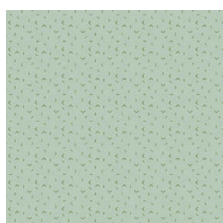


MTM-9203
POSITIVITY GOLD



MTM-9204
EXPRESSIONS GOLD

TO FOLIAGE



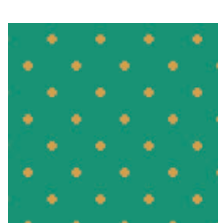
MTM-9300
INDICATION FOLIAGE



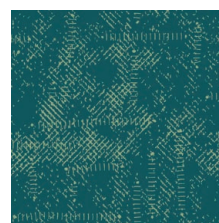
MTM-9301
THOUGHTS FOLIAGE



MTM-9302
QUARTZ FOLIAGE

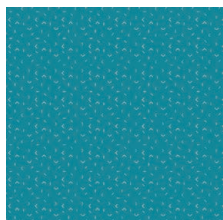


MTM-9303
POSITIVITY FOLIAGE



MTM-9304
EXPRESSIONS FOLIAGE

TO MIDNIGHT



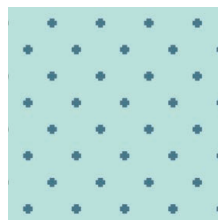
MTM-9400
INDICATION MIDNIGHT



MTM-9401
THOUGHTS MIDNIGHT



MTM-9402
QUARTZ MIDNIGHT



MTM-9403
POSITIVITY MIDNIGHT



MTM-9404
EXPRESSIONS MIDNIGHT



FEEL THE DIFFERENCE © 2019 Courtesy of Art Gallery Quilts LLC. All Rights Reserved.



FINISHED SIZE | 74" x 74"

FABRIC REQUIREMENTS

Fabric A	MTM 9100	½ yd.
Fabric B	MTM 9101	⅝ yd.
Fabric C	MTM 9102	¾ yd.
Fabric D	MTM 9103	FQ.
Fabric E	MTM 9104	FQ.
Fabric F	MTM 9200	⅓ yd.
Fabric G	MTM 9201	FQ.
Fabric H	MTM 9202	FQ.
Fabric I	MTM 9203	⅓ yd.
Fabric J	MTM 9204	⅝ yd.
Fabric K	MTM 9302	1 ¼ yd.
Fabric L	MTM 9303	⅞ yd.
Fabric M	MTM 9304	⅞ yd.
Fabric N	MTM 9400	½ yd.
Fabric O	MTM 9401	⅓ yd.
Fabric P	MTM 9402	⅓ yd.
Fabric Q	MTM 9404	⅝ yd.

BACKING FABRIC

MTM-9404 5 yds. *(Suggested)*

BINDING FABRIC

MTM-9204 (Fabric **J**) *(Included)*

CUTTING DIRECTIONS

*¼" seam allowances are included.
WOF means width of fabric.*

- Three (3) 9¾" x 9¾" squares from fabrics **A**, **O** and **Q**.
- Six (6) 9¾" x 9¾" squares from fabrics **B**, **C** and **M**.
- Two (2) 9¾" x 9¾" squares from fabrics **D**, **E**, **F**, **G**, **H** and **J**.
- Four (4) 9¾" x 9¾" squares from fabrics **K**, **N** and **P**.
- Nine (9) 9¾" x 9¾" squares from fabric **L**.

x x

- Eight (8) 4½" x 4½" squares from fabrics **A**, **B**, **F**, **M** and **N**.
- Sixteen (16) 4½" x 4½" squares from fabrics **C** and **Q**.
- Twenty four (24) 4½" x 4½" squares from fabric **K**.
- Four (4) 2" x 2" squares from fabrics **B** and **P**.
- Eight (8) 2" x 2" squares from fabric **F**.
- Four (4) 2½" x 2½" squares from fabric **J**.
- Four (4) 26½" x 2½" strips from fabrics **I** and **M**.
- Eight (8) 26½" x 2½" strips from fabric **K**.

CONSTRUCTION

Sew all rights sides together with ¼" seam allowance.

- Take all the 9¾" x 9¾" squares to make half square triangle (HST) squares using the eight at a time HST technique:
- Place the squares face to face.
- Draw diagonal lines making an X.
- Stitch at ¼" from each side of the lines you drew. Cut on the drawn lines, and on the vertical and horizontal center; or follow the pink lines on the diagram.
- As a result you will get eight (8) 4½" x 4½" unfinished HST from each 9¾" x 9¾" pair of squares:

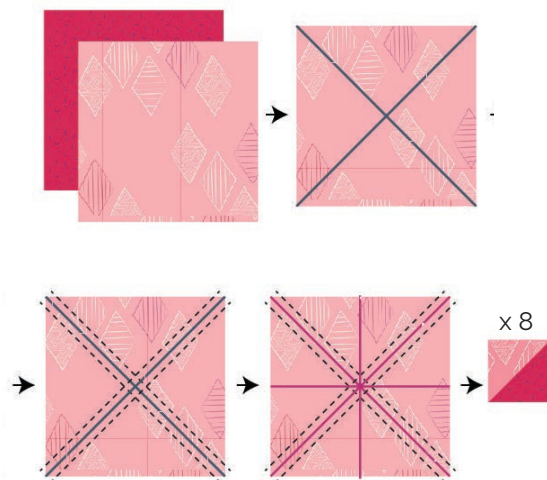
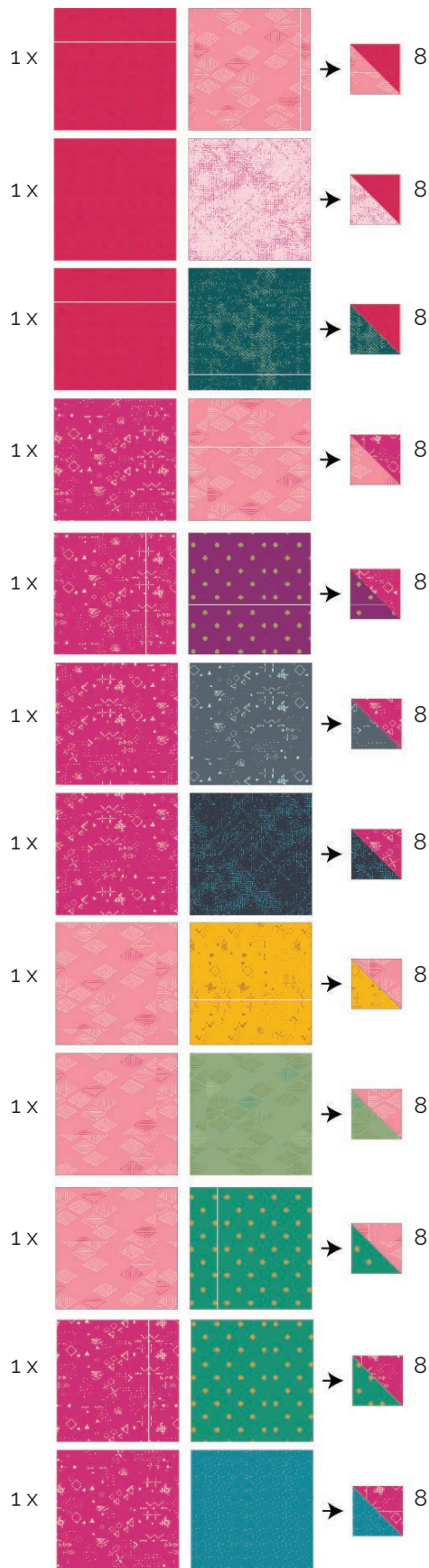


DIAGRAM 1

• Follow Diagram 2 to pair the squares:



XXXXXXXXXXXXXXXXXXXXXXXXXXXXXXXX

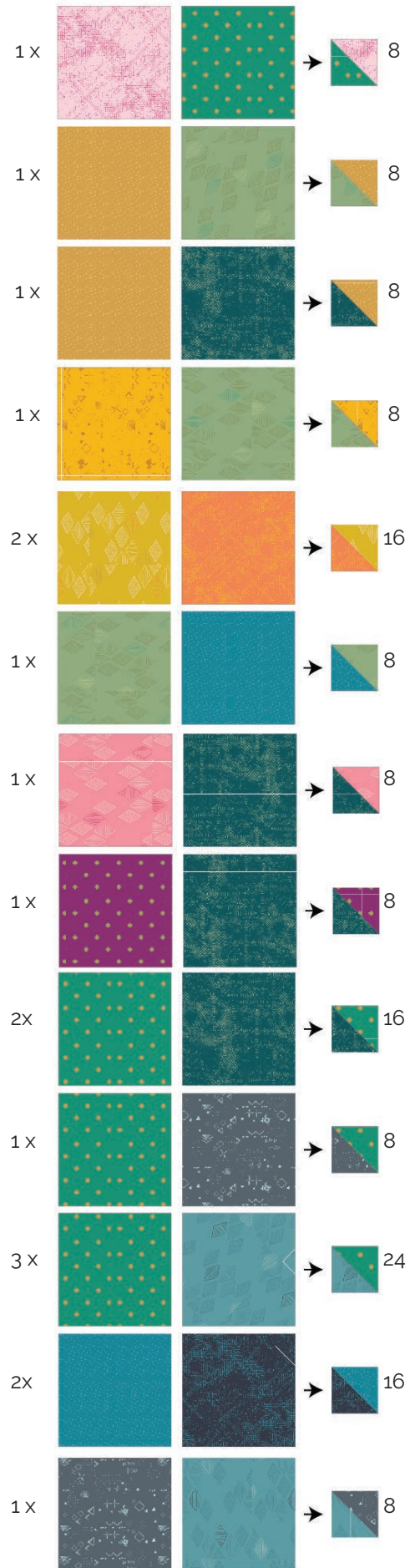
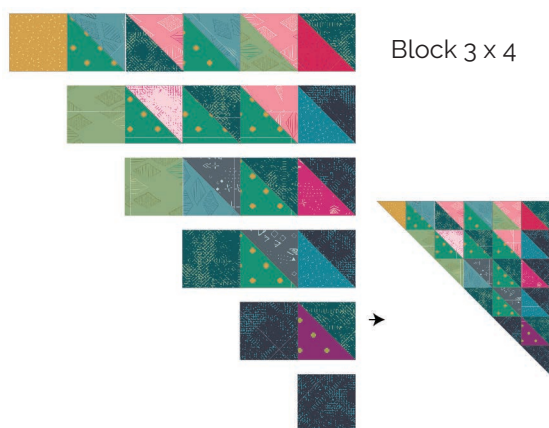
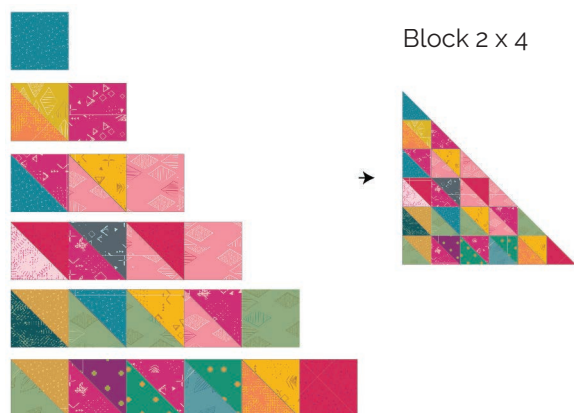
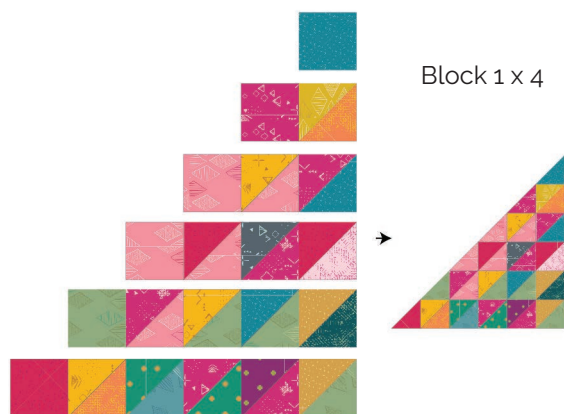


DIAGRAM 2

- Take all the $4\frac{1}{2}$ " x $4\frac{1}{2}$ " squares and the HSTs to make four (4) Block 1, Block 2, Block 3, and Block 4.
- Then trim them to a perfect triangle:



x x

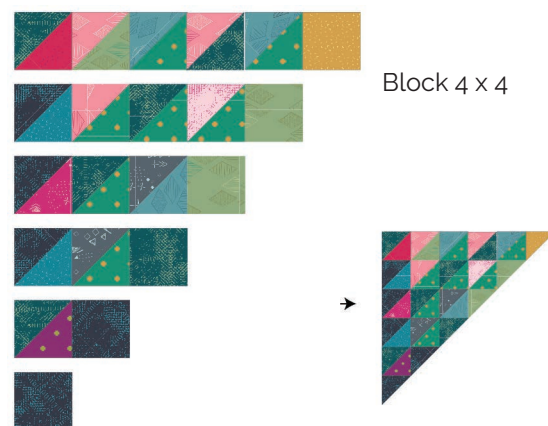


DIAGRAM 3

- Four (4) Block 5:
- Take four (4) $2\frac{1}{2}$ " x $2\frac{1}{2}$ " squares from fabric **J**, four (4) $24\frac{1}{2}$ " x $2\frac{1}{2}$ " strips from fabrics **I** and **M**, eight (8) $24\frac{1}{2}$ " x $2\frac{1}{2}$ " strips from fabric **K** and all the Blocks.
- Join them as follows:
- Row 1: Block 1 - **I** - Block 2
- Row 1: **K** - **J** - **K**
- Row 1: Block 3 - **M** - Block 4
- Make sure the square from fabric **J** is aligned with the strips from fabrics **I** and **M**.

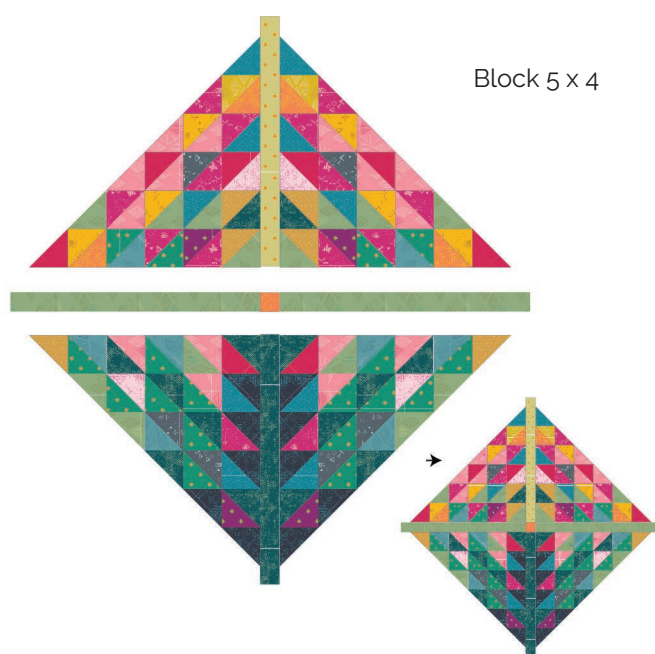


DIAGRAM 4

- Follow the lines of the blocks to trim the tips of the strips from fabrics **I**, **K**, and **M**.
- Take four (4) 2" x 2" squares from fabrics **B** and **P**, and eight (8) 2" x 2" squares from fabric **F**.
- Use the corner square triangle technique to attach them to the corners of Block 5 following the diagram:



DIAGRAM 5

ASSEMBLING THE TOP

Sew all rights sides together with 1/4" seam allowance. Press open.

- Join all four (4) Block 5, following the diagram:



DIAGRAM 6

QUILT ASSEMBLY

Sew rights sides together.

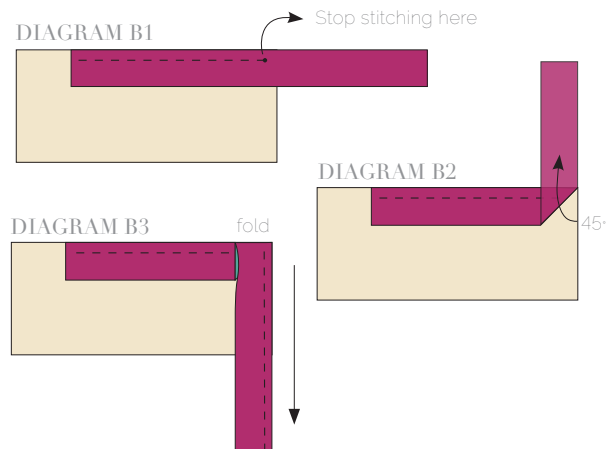
- Place **BACKING FABRIC** on a large surface wrong side up. Stretch it with masking tape against that surface.
- Place **BATTING** on top of backing fabric.
- Place **TOP** on top of the batting with right side facing up. Smooth away wrinkles using your hands.
- Pin all layers together and baste with basting thread, using long stitches. You can also use safety pins to join the layers.
- Machine or hand quilt starting at the center and working towards the corners. Remember that quilting motifs are a matter of personal preference. Have fun choosing yours!
- After you finished, trim excess of any fabric or batting, squaring the quilt to proceed to bind it.

BINDING

Sew rights sides together.

- Cut enough strips $1\frac{1}{2}$ " wide by the width of the fabric **J** to make a final strip 306" long. Start sewing the binding strip in the middle of one of the sides of the quilt, placing the strip right side down and leaving an approximated 5" tail. Sew with $\frac{1}{4}$ " seam allowance (using straight stitch), aligning the strip's raw edge with the quilt top's raw edge.
- Stop stitching $\frac{1}{4}$ " before the edge of the quilt (DIAGRAM B 1). Clip the threads. Remove the quilt from under the machine presser foot. Fold the strip in a motion of 45° and upward, pressing with your fingers (DIAGRAM B2). Hold this fold with your finger, bring the strip down in line with the next edge, making a horizontal fold that aligns with the top edge of the quilt (DIAGRAM B3). Start sewing at $\frac{1}{4}$ " of the border, stitching all the layers. Do the same in the four corners of the quilt.

- Stop stitching before you reach the last 5 or 6 inches. Cut the threads and remove the quilt from under the machine presser foot. Lay the loose ends of the binding flat along the quilt edge, folding the ends back on themselves where they meet. Press them together to form a crease. Using this crease as the stitching line, sew the two open ends of the binding with right sides together (you can help yourself marking with a pencil if the crease is difficult to see).
- Trim seam to $\frac{1}{4}$ " and press open. Complete the sewing. Turn binding to back of the quilt, turn raw edge inside and stitch by hand using blind stitch.



artgalleryfabrics.com

NOTE: While all possible care has been taken to ensure the accuracy of this pattern, We are not responsible for printing errors or the way in which individual work varies. Please read instructions carefully before starting the construction of this quilt. If desired, wash and iron your fabrics before starting to cut.