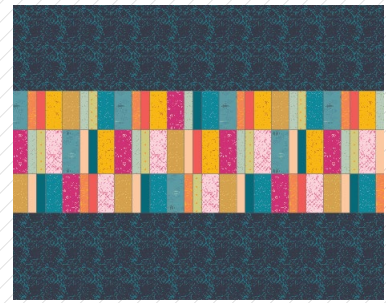


XXXXXX

XXXXXXXXXXXXXXXXXXXXXXXXXXXX



Joyous Dream



«Matchmade»

FABRICS DESIGNED BY PAT BRAVO

TO BERRY



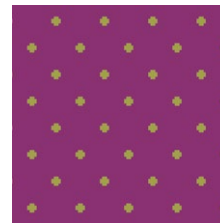
MTM-9100
INDICATION BERRY



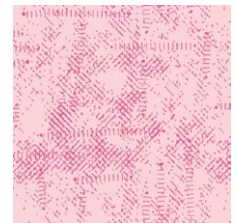
MTM-9101
THOUGHTS BERRY



MTM-9102
QUARTZ BERRY



MTM-9103
POSITIVITY



MTM-9104
EXPRESSIONS BERRY

TO GOLD



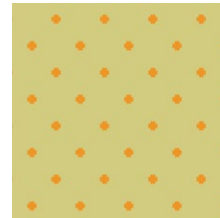
MTM-9200
INDICATION GOLD



MTM-9201
THOUGHTS GOLD



MTM-9202
QUARTZ GOLD

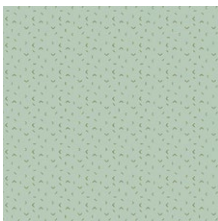


MTM-9203
POSITIVITY GOLD



MTM-9204
EXPRESSIONS GOLD

TO FOLIAGE



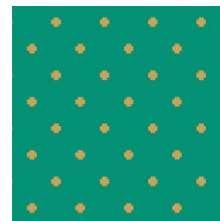
MTM-9300
INDICATION FOLIAGE



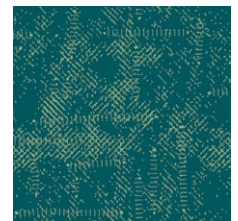
MTM-9301
THOUGHTS FOLIAGE



MTM-9302
QUARTZ FOLIAGE

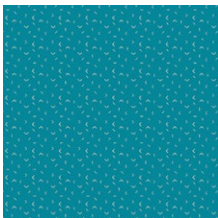


MTM-9303
POSITIVITY FOLIAGE



MTM-9304
EXPRESSIONS FOLIAGE

TO MIDNIGHT



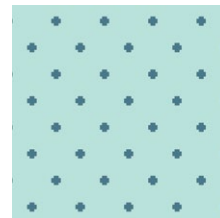
MTM-9400
INDICATION MIDNIGHT



MTM-9401
THOUGHTS MIDNIGHT



MTM-9402
QUARTZ MIDNIGHT



MTM-9403
POSITIVITY MIDNIGHT



MTM-9404
EXPRESSIONS MIDNIGHT



PE-444
Peach Sherbet



PE-438
Coral Reef



PE-418
Tile Blue





Fabric A	MTM-9404	2½yds.
Fabric B	MTM-9200	⅓ yd.
Fabric C	MTM-9101	½ yd.
Fabric D	MTM-9402	⅓ yd.
Fabric E	PE-444	⅓ yd.
Fabric F	MTM-9300	⅓ yd.
Fabric G	MTM-9204	⅓ yd.
Fabric H	PE-418	¼ yd.
Fabric I	MTM-9203	¼yd.
Fabric J	PE-438	¼ yd.
Fabric K	MTM-9400	⅓ yd.
Fabric L	MTM-9104	⅓ yd.
Fabric M	MTM-9201	⅓ yd.
Fabric N	MTM-9401	1⅛ yd.

Duvet- MTM-9404 5yds. *(suggested)*
Pillows -MTM-9401 *(included)*

*1/4" seam allowances are included.
WOF means width of fabric.*

- Two (2) $20\frac{1}{2}$ " x $86\frac{1}{2}$ " rectangle from Fabric **A**
- Six (6) $4\frac{1}{2}$ " x $9\frac{1}{2}$ " rectangle from Fabric **B**
- One (1) $4\frac{1}{2}$ " x $10\frac{1}{2}$ " rectangle from Fabric **B**
- Three (3) $4\frac{1}{2}$ " x $9\frac{1}{2}$ " rectangle from Fabrics **C, L**
- Four (4) $4\frac{1}{2}$ " x $10\frac{1}{2}$ " rectangle from Fabrics **C, L**
- Five (5) $4\frac{1}{2}$ " x $9\frac{1}{2}$ " rectangle from Fabric **D**
- Two (2) $4\frac{1}{2}$ " x $10\frac{1}{2}$ " rectangle from Fabric **D**
- Four (4) $2\frac{1}{2}$ " x $9\frac{1}{2}$ " rectangle from Fabrics **E, F**

- Four (4) $2\frac{1}{2}$ " x $10\frac{1}{2}$ " rectangle from Fabrics E, F, I
- Eight (8) $2\frac{1}{2}$ " x $9\frac{1}{2}$ " rectangle from Fabric G
- Five (5) $2\frac{1}{2}$ " x $9\frac{1}{2}$ " rectangle from Fabric H
- Two (2) $2\frac{1}{2}$ " x $10\frac{1}{2}$ " rectangle from Fabric H
- Three (3) $2\frac{1}{2}$ " x $9\frac{1}{2}$ " rectangle from Fabric I
- Six (6) $2\frac{1}{2}$ " x $9\frac{1}{2}$ " rectangle from Fabric J
- One (1) $2\frac{1}{2}$ " x $10\frac{1}{2}$ " rectangle from Fabric J
- Seven (7) $4\frac{1}{2}$ " x $9\frac{1}{2}$ " rectangle from Fabric K
- Four (4) $4\frac{1}{2}$ " x $9\frac{1}{2}$ " rectangle from Fabric M
- Three (3) $4\frac{1}{2}$ " x $10\frac{1}{2}$ " rectangle from Fabric M

- One (1) $9\frac{1}{2}$ " x 4" rectangle from Fabric **N**
- One (1) $9\frac{1}{2}$ " x $12\frac{1}{2}$ " rectangle from Fabric **N**
- One (1) $2\frac{1}{2}$ " x 5" rectangle from Fabrics **B, G**
- One (1) 1" x 3" rectangle from Fabric **B**
- One (1) 3" x 6" rectangle from Fabric **C**
- One (1) 4" x 6" rectangle from Fabric **D**
- One (1) $1\frac{3}{4}$ " x $3\frac{1}{2}$ " rectangle from Fabrics **E, H, J, L**
- One (1) 2" x 4" rectangle from Fabrics **F, J**

- One (1) 5" x 5½" rectangle from Fabric **B, K**
- One (1) 5½" x 7½" rectangle from Fabrics **C, N**
- One (1) 2" x 5½" rectangle from Fabrics **C, F, J, K, L, N**
- One (1) 2½" x 5½" rectangle from Fabrics **C, H**
- Two (2) 2" x 5½" rectangle from Fabrics **E, M**
- One (1) 5½" x 5½" square from Fabrics **G, I**

CONSTRUCTION

Sew all rights sides together with 1/4" seam allowance.

Duvet

- Follow the diagram below for the 3 column assembly

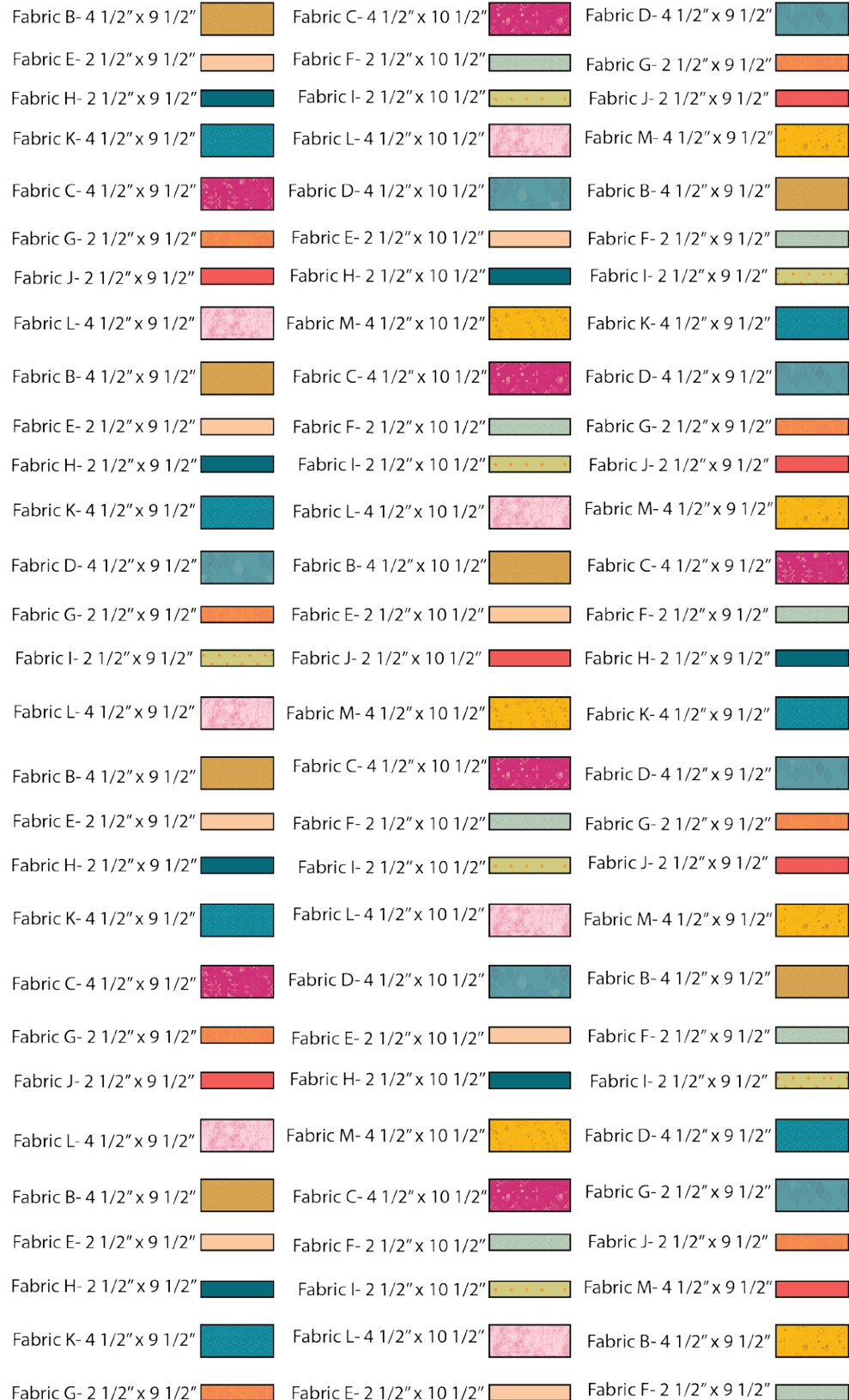
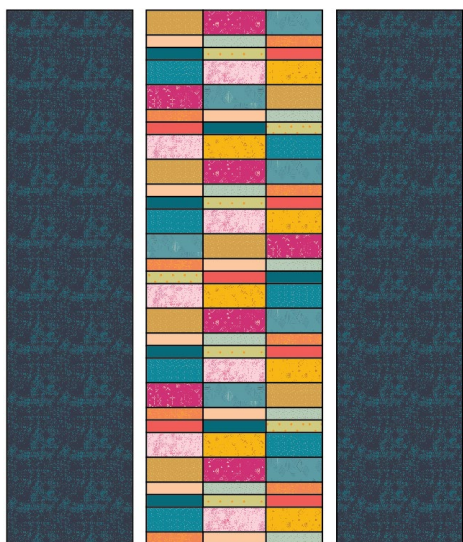
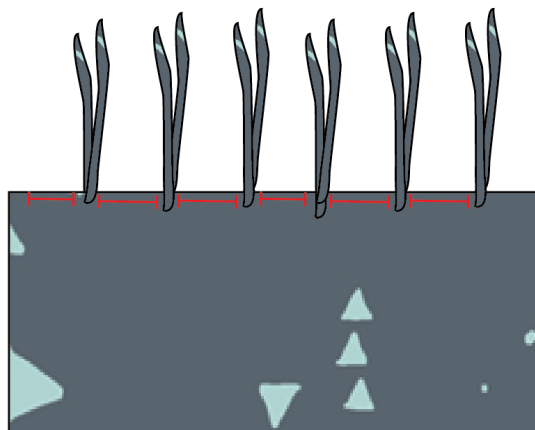


DIAGRAM 1

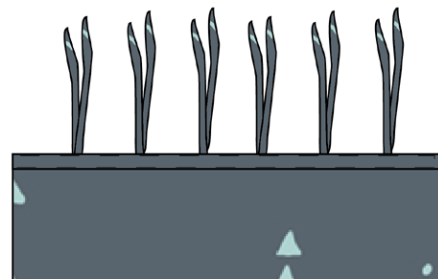
- Now, join the three columns together.
- Take the (2) 20½" x 86" rectangle pieces from Fabric A and join them on each side of the column unit.
- Quilt as desired.



- Place the backing fabric on top of the duvet cover, right sides facing and sew all around, leaving the bottom part unsewned.
- Take the bottom part of the duvet cover and to have a clean look, create a 1" bias tape, of the fabric of your choice.
- Set aside.
- Create your strings by cutting (24) 12" x $\frac{3}{4}$ " strips from Fabric **N**.
- Measure and pin every 5" the strings on both sides of the duvet cover.



- Sew your bias tape, making sure your strings are sandwiched inbetween the Duvet and the bias tape.



- Now, your Duvet Cover is done!

Pillow 1

- Pair Fabric **B** 2" x 5½ rectangle and Fabric **J** 2" x 4" rectangle.



- Pair Fabric **L** and **H** 1¾" x 3½" rectangle.



- Now, pair the assembled piece with (1) 3" x 6" rectangle from Fabric C.



- Pair Fabric **F** 2" x 4" rectangle with Fabric **G** 2" x 5½" rectangle.



- Pair (1) $1\frac{3}{4}$ " x $3\frac{1}{2}$ " rectangle from Fabric E, (1) $1\frac{3}{4}$ " x $3\frac{1}{2}$ " rectangle from Fabric J and (1) $1\frac{1}{2}$ " x $3\frac{1}{2}$ " rectangle from Fabric B.



- Now, pair the assembled piece with (1) 4" x 6" rectangle from Fabric **D**.



DIAGRAM 10

- Sew all assembled pieces as in the diagram below.



DIAGRAM 11

- Pair (1) 9½" x 4" rectangle from Fabric **N** on the left side of the assembled piece.
- Pair (1) 9½" x 12" rectangle from Fabric **N** on the right side of the assembled piece, creating your pillow top.



DIAGRAM 12

Pillow 2

- Pair (1) Fabric **C** 7½" x 5½" rectangle, (1) Fabric **E** 2" x 5½" rectangle and (1) 5" x 5½" rectangle from Fabric **K** as in the diagram below.



DIAGRAM 13

- Pair (1) 2" x 5½" rectangle from Fabric **F**, (1) 2" x 5½" rectangle from Fabric **M**, (1) 2" x 5½" rectangle from Fabric **N**, (1) 5½" x 5½" square from Fabric **I**, (1) 2" x 5½" rectangle from Fabric **L**, and (1) 2½" x 5½" rectangle from Fabric **H** as in the diagram below.



DIAGRAM 14

- Pair (1) 2" x 5½" rectangle from Fabric **C**, (1) 2" x 5½" rectangle from Fabric **E**, (1) 5½" x 5½" square from Fabric **G**, (1) 2½" x 5½" rectangle from Fabric **C**, (1) 2" x 5½" rectangle from Fabric **M** and (1) 2" x 5½" rectangle from Fabric **K** as in the diagram below.



DIAGRAM 15

- Pair (1) 7½" x 5½" rectangle from Fabric **N**, (1) 2" x 5½" rectangle Fabric **J** and (1) 5" x 5½" rectangle from Fabric **B** as in the diagram below.



DIAGRAM 16

- Now, pair all four units in the following order in order to assemble your pillow top.

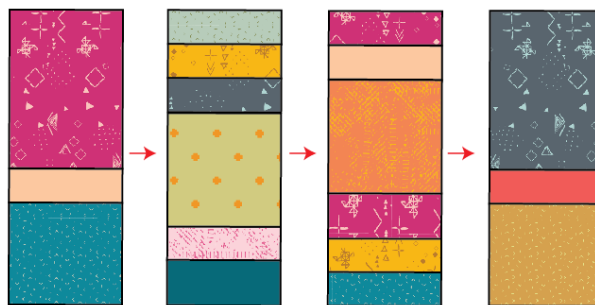


DIAGRAM 17

CREATING THE BACK PILLOW

*Sew all rights sides together with $\frac{1}{4}$ " seam allowance.
Press open.*

- To make a envelope back for your pillow 1 take both 16' x 9½' rectangles and fold one 16' side on each rectangle in 1/2' and press and then fold another 1/2' and press.
- To make a envelope back for your pillow 2, take both 14' x 14½' rectangles and fold one 14' side on each rectangle in 1/2' and press and then fold another 1/2' and press.
- Top stitch as close to the edges as possible.
- Place rectangles right side together on top of each other to the front of your pillows and stitch all the way around your pillow at $\frac{1}{4}$ ' seam allowance.
- Clip corners at seam allowance and flip piece to the right side of the fabric.
- Fill the pillow with a 9' x 24' form for pillow 1 and 13' x 20' form for pillow 2 and enjoy!



artgalleryfabrics.com

NOTE: While all possible care has been taken to ensure the accuracy of this pattern, We are not responsible for printing errors or the way in which individual work varies. Please read instructions carefully before starting the construction of this quilt. If desired, wash and iron your fabrics before starting to cut.

© 2019 Courtesy of Art Gallery Quilts LLC. All Rights Reserved.