

XXXXXX

# Going to Market



XXXXXXXXXXXXXXXXXXXXXXXXXXXX



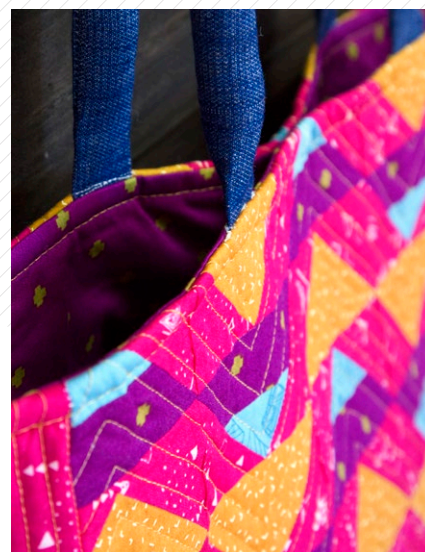


# Going to Market

BAG DESIGNED BY AGF STUDIO

«Matchmade»

FABRICS DESIGNED BY PAT BRAVO



TO BERRY



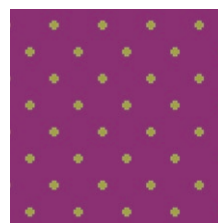
MTM-9100  
INDICATION BERRY



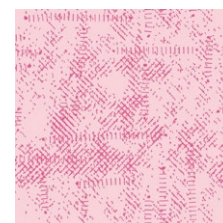
MTM-9101  
THOUGHTS BERRY



MTM-9102  
QUARTZ BERRY

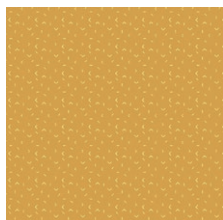


MTM-9103  
POSITIVITY



MTM-9104  
EXPRESSIONS BERRY

TO GOLD



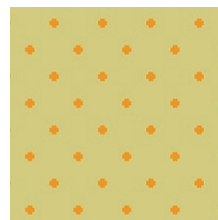
MTM-9200  
INDICATION GOLD



MTM-9201  
THOUGHTS GOLD



MTM-9202  
QUARTZ GOLD

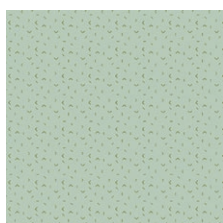


MTM-9203  
POSITIVITY GOLD



MTM-9204  
EXPRESSIONS GOLD

TO FOLIAGE



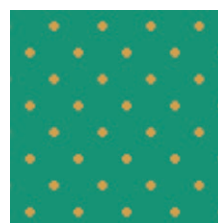
MTM-9300  
INDICATION FOLIAGE



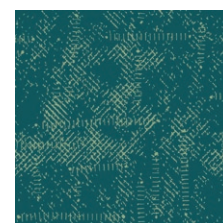
MTM-9301  
THOUGHTS FOLIAGE



MTM-9302  
QUARTZ FOLIAGE

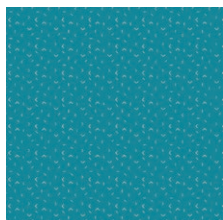


MTM-9303  
POSITIVITY FOLIAGE



MTM-9304  
EXPRESSIONS FOLIAGE

TO MIDNIGHT



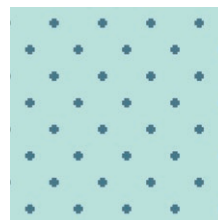
MTM-9400  
INDICATION MIDNIGHT



MTM-9401  
THOUGHTS MIDNIGHT



MTM-9402  
QUARTZ MIDNIGHT



MTM-9403  
POSITIVITY MIDNIGHT



MTM-9404  
EXPRESSIONS MIDNIGHT



FEEL THE DIFFERENCE © 2019 Courtesy of Art Gallery Quilts LLC. All Rights Reserved.

# Going to Market

FINISHED SIZE | 15" x 17"

## FABRIC REQUIREMENTS

Fabric A	MTM-g101	1 yd.
Fabric B	MTM-g103	1 ¾ yd.
Fabric C	MTM-g200	½ yd.
Fabric D	MTM-g402	⅓ yd.
Fabric E	DEN-T-3000	⅙ yd.
Fabric F	MTM-g201	½ yd.

## CUTTING DIRECTIONS

*WOF means width of fabric.*

- One Hundred Sixty (160) 2 1/2" squares from Fabric A
- One (1) 4" x WOF strip from Fabric A, B, batting, and Woven Interfacing (Side Panels)
- Forty (40) 1 1/2" x 4 1/2" strips from Fabric B and D
- Forty (40) 2 1/2" x 4 1/2" strips from Fabric C
- Six (6) 15" x 18" rectangles from Fabric F (lining and slip pockets)
- Two (2) 16" x 19" rectangles from Woven Interfacing and batting
- Two (2) 2 1/2" x WOF strips from Fabric E (straps)

## CONSTRUCTION

*Sew all rights sides together with ¼" seam allowance unless noted otherwise. Read through entire construction process before beginning assembly.*

- Sew your 1 1/2" x 4 1/2" strips from Fabric B and D together to make 40 B/D strip sets.



DIAGRAM 1

- On all your 2 1/2" squares from Fabric A draw a diagonal line with a fabric marking pen from corner to corner.
- To make your flying geese take all your B/D strips and 2 1/2" x 4 1/2" strips from Fabric C and place a 2 1/2" square from Fabric A right sides together to one corner of your strips.
- Sew on the line you drew and trim seam allowance to 1/4" .
- Press open and repeat this same process on the other side of your strip.

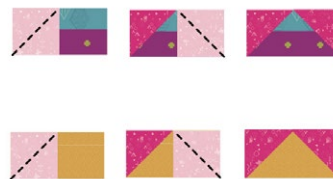


DIAGRAM 2

- You should now have a total of 40 strip pieced flying geese and 40 regular flying geese.
- Place your flying geese out following the diagram below and sew together to make two of these pieces which will make your front and back exterior bag.

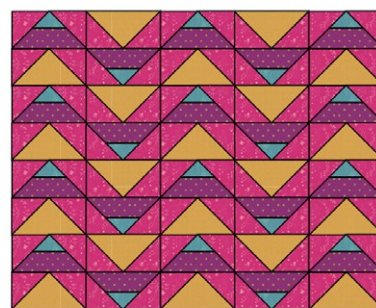


DIAGRAM 3

- Quilt both front and back as desired.

- Mark a 15" x 18" rectangle on your front and back pieces making sure everything is centered.
- To create the curved look of our tote measure 4" down on each side of the top of your piece and mark.
- Now measure and mark 4" in on the bottom of your piece on both sides. Starting from your first mark on the side of your bag start to draw a curve with a fabric marking pen ending at the bottom mark.
- Repeat this on the other side of your bag and on your other exterior piece to create your front and back bag pieces as well as your lining pieces. Fuse woven fusible interfacing to your lining pieces.

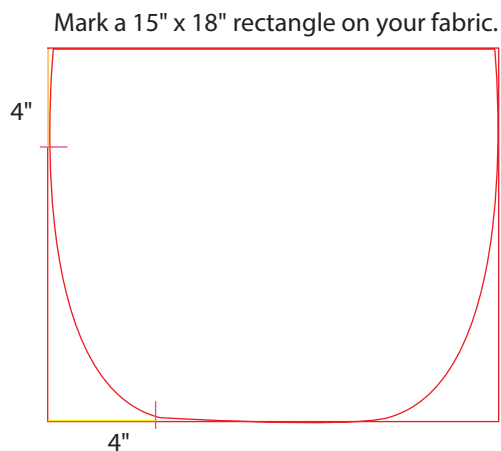


DIAGRAM 4

- To create the pockets on your lining use your lining pieces as a template and cut four pieces 3" shorter. Follow Diagram 5. Fuse woven fusible interfacing to two of your pocket pieces.

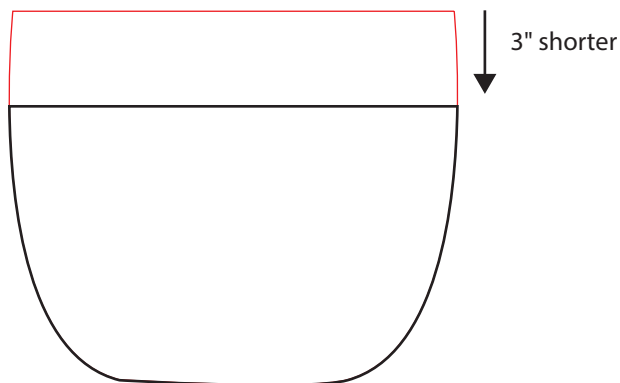


DIAGRAM 5

- With right sides together match two pocket pieces together (one without and one with woven fusible) and stitch at 1/2" on the top edge. Flip pieces so wrong sides are touching and press edge.
- Topstitch 1/2" to secure. Repeat this one more time to get both lining pockets.

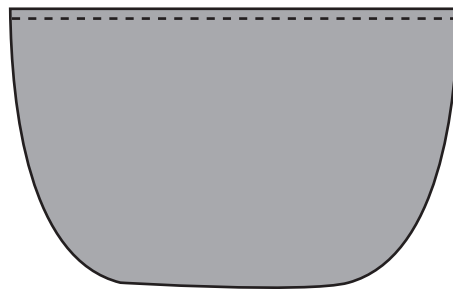


DIAGRAM 6

- Place your pocket pieces on top of your lining pieces and stitch straight down the center with a triple stitch to create two pocket sections for each side of your bag.

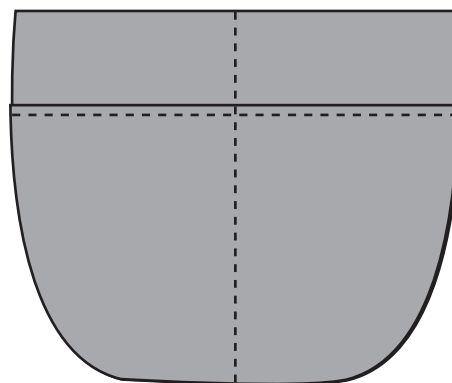


DIAGRAM 7

- With woven interfacing attached to your lining panel stitch your front and back lining to each side. Trim any extra panel if there is any excess. Make sure to leave a small unsewn portion in the lining to flip right side of bag through.
- Repeat this same process with your exterior panel, make sure to add batting and quilt as desired before attaching it to the front and back exterior bag.

## Strap Construction

- Take your 3" x WOF strips from Fabric E and sew long edges at 3/8". Flip tubes right side out and figure out how long you would like your straps.
- Trim your straps to desired length and stuff full of polyfil. Leave the last inch of each end unstuffed to be able to successfully attach to your exterior bag.



- Stitch the ends of your straps about 4 1/2" in on your front and back exterior bag pieces.



DIAGRAM 8

### Attaching the Magnet Snap

- Note: A magnetic snap has two main components, a male side & a female side. The magnetic snap also comes with a backing washer for each component. When you purchase a magnetic snap, you will receive 4 metal pieces in total.
- Find the midpoint of one of your lining pieces and measure down 2 1/2" and place a small 1"x 2" piece of ultra firm stabilizer. Iron stabilizer into place. Mark the 2 1/2" mark on top of stabilizer.
- Place a washer on this mark. Mark with a pencil two lines, from top and bottom tracing inside the rectangles on the washer. (Diagram 9)

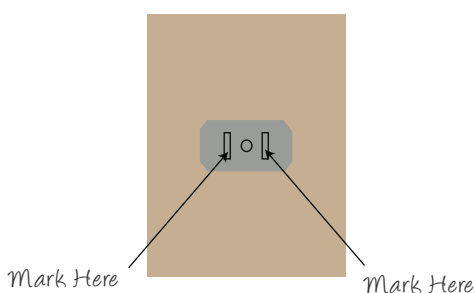


DIAGRAM 9

- Remove the washer and make two slits on those marks using a small pair of sharp scissors.
- Place the arms of the male magnet clasp through the slits from the right side of the lining.

XX

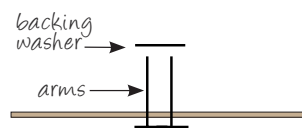


DIAGRAM 10

- Put the washer over the arms from the fusible side.
- Using pliers, fold each arm of the clasp out and down in opposite directions around the washer. Make the arms as flat as a possible.

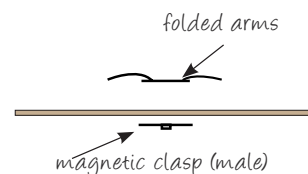


DIAGRAM 11

- To attach the female side of the magnetic snap repeat the same process following Diagram 9-11 with the female magnetic snap and attach to your other lining piece.
- To assemble the lining to the exterior bag place the lining an exterior bag right sides together making sure your straps are tucked out of the way and stitch all the way around your top bag at 1/2". Flip right side of bag out through the unsewn portion in the lining.
- Give your bag a good press and stitch opening closed.
- Topstitch around the top edge of your bag to keep the lining laying flat in the inside of your bag.



[artgalleryfabrics.com](http://artgalleryfabrics.com)

NOTE: While all possible care has been taken to ensure the accuracy of this pattern, We are not responsible for printing errors or the way in which individual work varies. Please read instructions carefully before starting the construction of this quilt. If desired, wash and iron your fabrics before starting to cut.