

dimension

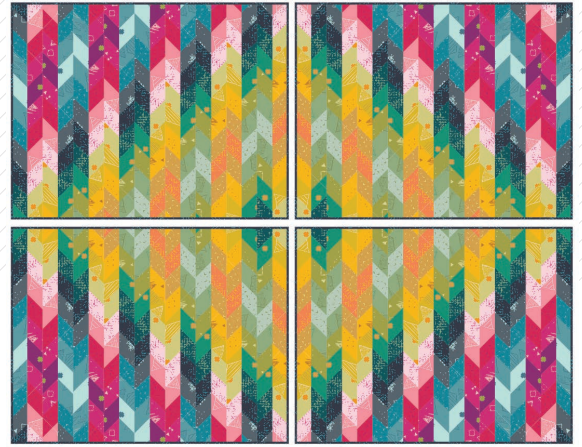


dimension

QUILT DESIGNED BY AGF STUDIO

«Matchmade»

FABRICS DESIGNED BY PAT BRAVO



TO BERRY



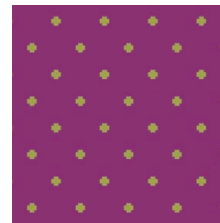
MTM-9100
INDICATION BERRY



MTM-9101
THOUGHTS BERRY



MTM-9102
QUARTZ BERRY

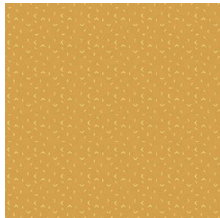


MTM-9103
POSITIVITY



MTM-9104
EXPRESSIONS BERRY

TO GOLD



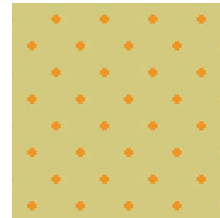
MTM-9200
INDICATION GOLD



MTM-9201
THOUGHTS GOLD



MTM-9202
QUARTZ GOLD

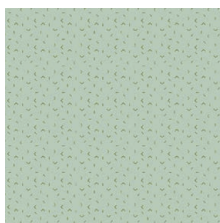


MTM-9203
POSITIVITY GOLD



MTM-9204
EXPRESSIONS GOLD

TO FOLIAGE



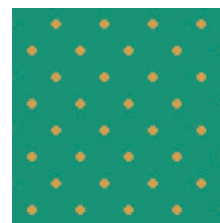
MTM-9300
INDICATION FOLIAGE



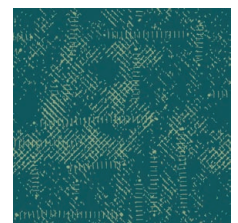
MTM-9301
THOUGHTS FOLIAGE



MTM-9302
QUARTZ FOLIAGE



MTM-9303
POSITIVITY FOLIAGE



MTM-9304
EXPRESSIONS FOLIAGE

TO MIDNIGHT



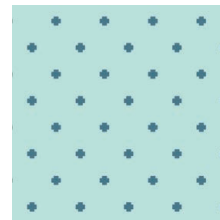
MTM-9400
INDICATION MIDNIGHT



MTM-9401
THOUGHTS MIDNIGHT



MTM-9402
QUARTZ MIDNIGHT



MTM-9403
POSITIVITY MIDNIGHT



MTM-9404
EXPRESSIONS MIDNIGHT



dimension

FINISHED SIZE | 4 x (18" x 14")

FABRIC REQUIREMENTS

Fabric A	MTM-9104	¼ yd.
Fabric B	MTM-9102	¼ yd.
Fabric C	MTM-9100	¼ yd.
Fabric D	MTM-9101	¼ yd.
Fabric E	MTM-9103	⅓ yd.
Fabric F	MTM-9203	¼ yd.
Fabric G	MTM-9202	¼ yd.
Fabric H	MTM-9201	¼ yd.
Fabric I	MTM-9200	¼ yd.
Fabric J	MTM-9204	⅓ yd.
Fabric K	MTM-9304	¼ yd.
Fabric L	MTM-9303	¼ yd.
Fabric M	MTM-9301	¼ yd.
Fabric N	MTM-9302	¼ yd.
Fabric O	MTM-9300	⅓ yd.
Fabric P	MTM-9404	⅝ yd.
Fabric Q	MTM-9401	¼ yd.
Fabric R	MTM-9400	¼ yd.
Fabric S	MTM-9402	¼ yd.
Fabric T	MTM-9403	⅓ yd.

BACKING FABRIC
MTM-9303 1 yd. *(Suggested)*

BINDING FABRIC
MTM-9404 (Fabric **P**) *(Included)*

CUTTING DIRECTIONS

¼" seam allowances are included.
WOF means width of fabric.

- Four (4) WOF x 1½" strips from fabrics **A, B, C, D, F, G, H, I, K, L, M, N, P, Q, R**, and **S**.
- Four (4) 21" x 1½" strips from fabrics **A, B, C, D, F, G, H, I, K, L, M, N, P, Q, R**, and **S**.

XXXXXXXXXXXXXXXXXXXXXXXXXXXXXXXXXXXX

- Two (2) WOF x 1½" strips from fabrics **E, J, O**, and **T**.
- Two (2) 21" x 1½" strips from fabrics **E, J, O**, and **T**.

CONSTRUCTION

Sew all rights sides together with ¼" seam allowance.

- To accomplish the HST construction take the 3⅝" squares from fabrics **A, B, C, D, E, F, G, H, J** and **K**.
- Join all the strips into strip sets.
- It is very important to not align the strips when joining them, but to off set them 1" to create a stairway effect:
- One (1) long strip set 1 and 2: **A - B - C - D - E - D - C - B - A**
- One (1) short strip set 1 and 2: **A - B - C - D - E - D - C - B - A**
- One (1) long strip set 3 and 4: **F - G - H - I - J - I - H - G - F**
- One (1) short strip set 3 and 4: **F - G - H - I - J - I - H - G - F**
- One (1) long strip set 5 and 6: **K - L - M - N - O - N - M - L - K**
- One (1) short strip set 5 and 6: **K - L - M - N - O - N - M - L - K**
- One (1) long strip set 7 and 8: **P - Q - R - S - T - S - R - Q - P**
- One (1) short strip set 7 and 8: **P - Q - R - S - T - S - R - Q - P**
- Strip sets 1, 3, 5, and 7 are joined in the opposite direction of strip sets 2, 4, 6, and 8.

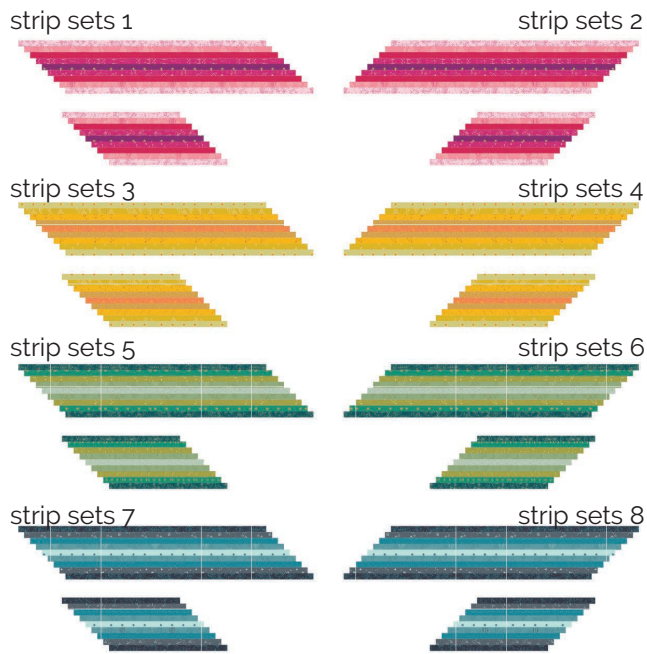


DIAGRAM 1

- Take your ruler and make 45 degree and cut $1\frac{1}{2}$ " strips:

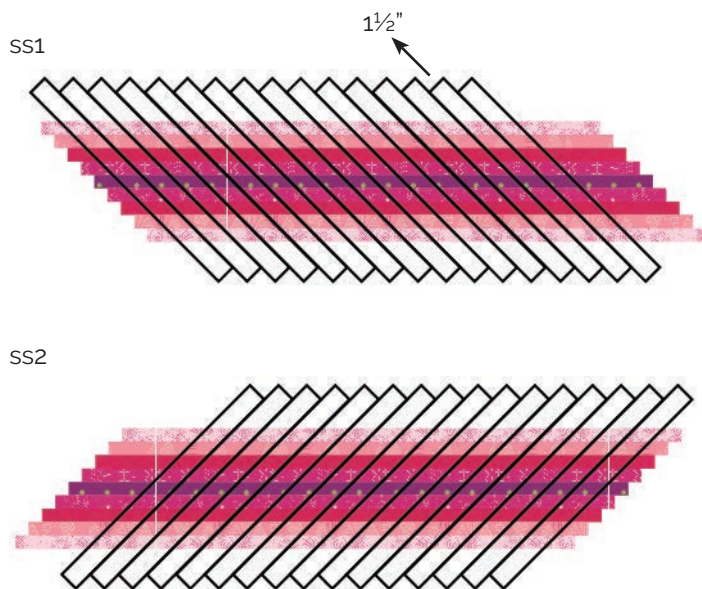


DIAGRAM 2

- As a result you will need eighteen (18) of each of the following:



DIAGRAM 3

- Join ss1 to ss3, ss2 to ss4, ss7 to ss5, and ss8 to ss6.
- Pair them the resulting strips with the opposite color making sure the center seam creates a V:

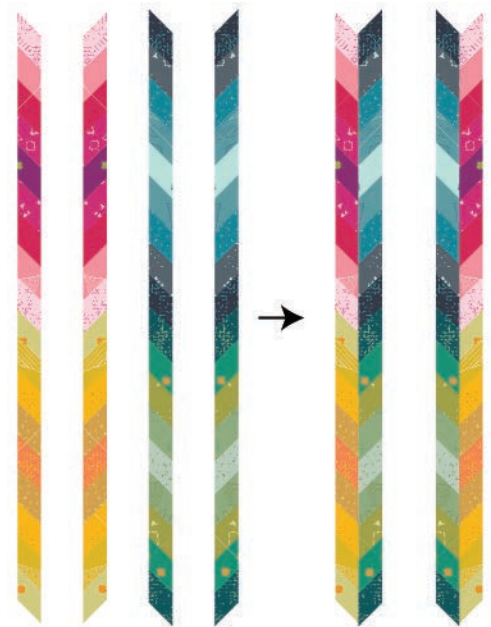


DIAGRAM 4

- Join the resulting strip sets into two (2) Block 1 and Block 2:
- Note that Block 1 is the mirror image of Block 2

Block 1 x (2)

Block 2 x (2)

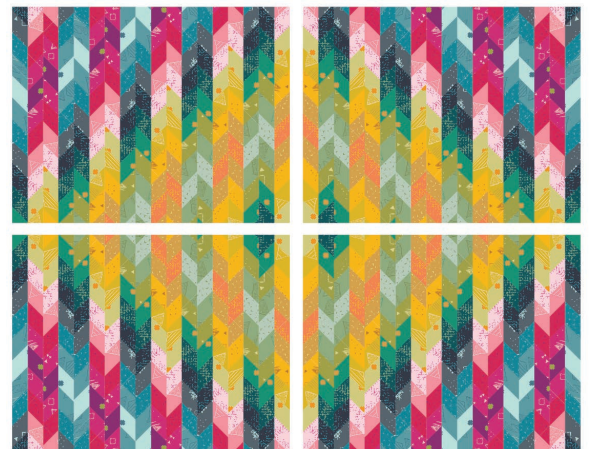
XX

- Block 1 x (2)

Block 1 x (2)

Block 2 x (2)

- Lay them out and get ready to quilt!!



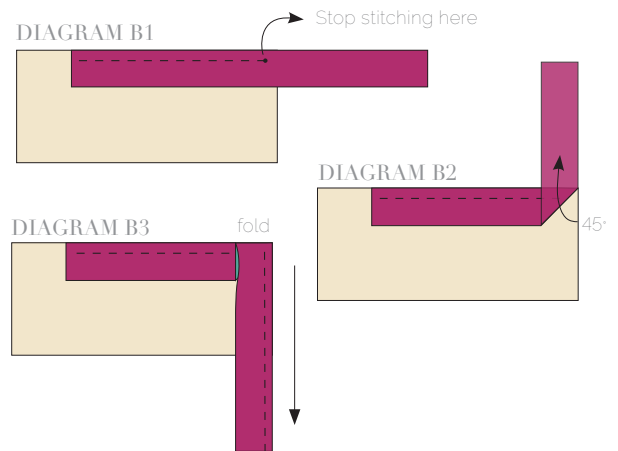
artgalleryfabrics.com

QUILT ASSEMBLY

Sew rights sides together.

- Place BACKING FABRIC on a large surface wrong side up. Stretch it with masking tape against that surface.
- Place BATTING on top of backing fabric.
- Place TOP on top of the batting with right side facing up. Smooth away wrinkles using your hands.
- Pin all layers together and baste with basting thread, using long stitches. You can also use safety pins to join the layers.
- Machine or hand quilt starting at the center and working towards the corners. Remember that quilting motifs are a matter of personal preference. Have fun choosing yours!
- After you finished, trim excess of any fabric or batting, squaring the quilt to proceed to bind it.

- Stop stitching before you reach the last 5 or 6 inches. Cut the threads and remove the quilt from under the machine presser foot. Lay the loose ends of the binding flat along the quilt edge, folding the ends back on themselves where they meet. Press them together to form a crease. Using this crease as the stitching line, sew the two open ends of the binding with right sides together (you can help yourself marking with a pencil if the crease is difficult to see).
- Trim seam to $\frac{1}{4}$ " and press open. Complete the sewing. Turn binding to back of the quilt, turn raw edge inside and stitch by hand using blind stitch.



BINDING

Sew rights sides together.

- Cut enough strips $1\frac{1}{2}$ " wide by the width of the fabric P to make a final strip 266" long. Start sewing the binding strip in the middle of one of the sides of the quilt, placing the strip right side down and leaving an approximated 5" tail. Sew with $\frac{1}{4}$ " seam allowance (using straight stitch), aligning the strip's raw edge with the quilt top's raw edge.
- Stop stitching $\frac{1}{4}$ " before the edge of the quilt (DIAGRAM B 1). Clip the threads. Remove the quilt from under the machine presser foot. Fold the strip in a motion of 45° and upward, pressing with your fingers (DIAGRAM B2). Hold this fold with your finger, bring the strip down in line with the next edge, making a horizontal fold that aligns with the top edge of the quilt (DIAGRAM B3). Start sewing at $\frac{1}{4}$ " of the border, stitching all the layers. Do the same in the four corners of the quilt.



artgalleryfabrics.com

NOTE: While all possible care has been taken to ensure the accuracy of this pattern, We are not responsible for printing errors or the way in which individual work varies. Please read instructions carefully before starting the construction of this quilt. If desired, wash and iron your fabrics before starting to cut.