



# LightWave

DESIGNED BY AGF



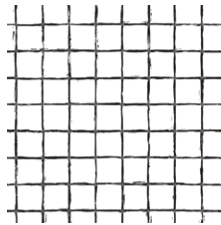
## GRID

FABRICS DESIGNED  
BY KATARINA ROCCELLA

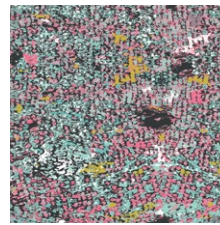
ULTRA MIST



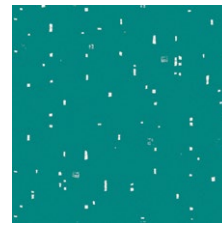
GRI-50400  
PIXELFLY EDEN AQUA



GRI-50401  
GRID POSITIVE



GRI-50402  
WING MAGNIFIED CELESTE



GRI-50403  
IRREGULARITY JADE



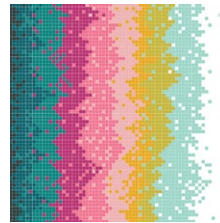
GRI-50404  
FRAMEWORK ALBARISE



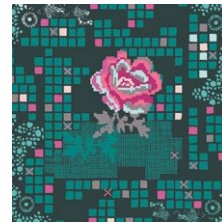
GRI-50405  
EVANESCENCE BLACKOUT



GRI-50407  
VITRINE GEMS



GRI-50408  
LIGHTWAVE IGNITE



GRI-50409  
ROSE CIRCUIT TEA

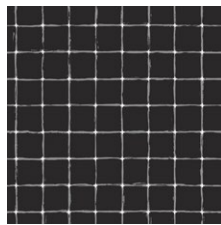


GRI-50411  
IRREGULARITY MAGENTA

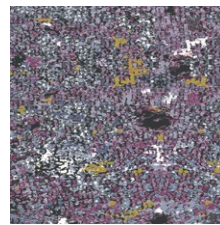
ULTRA VIOLET



GRI-40400  
PIXELFLY EDEN LILAC



GRI-40401  
GRID NEGATIVE



GRI-40402  
WING MAGNIFIED MAUVE



GRI-40403  
IRREGULARITY CINDER



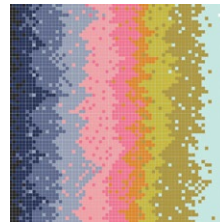
GRI-40404  
FRAMEWORK VIOLET



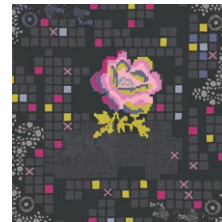
GRI-40405  
EVANESCENCE FLASH



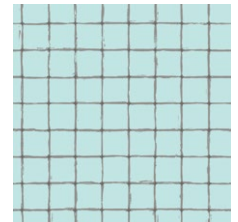
GRI-40406  
PETALBIT TRELLIS AQUA



GRI-40408  
LIGHTWAVE DAMPEN



GRI-40409  
ROSE CIRCUIT JET



GRI-40410  
GRID STATIC



# LightWave

FINISHED SIZE | 37" x 13"

## FABRIC REQUIREMENTS

Fabric A	GRI-50405	1¼ yd
Fabric B	GRI-50411	⅛ yd.
Fabric C	GRI-50403	⅛ yd.
Fabric D	GRI-40408	FQ.

BACKING FABRIC  
GRI-50405 (included)

## CUTTING DIRECTIONS

¼" seam allowances are included.  
WOF means width of fabric.

Fabric A:

- Cut Two (2) rectangles of 21" x 13½"
- Cut Ten (10) WOF X 1½"

Sub Cut:

- Two (2) Stripes of 3 1½"
- Six (6) Strips of 4 x 1½"
- Four (4) strips of 5 x 1½"
- Eight (8) strips of 6 x 1½"
- Four (4) strips of 8 x 1½"
- Four (4) strips of 10 x 1½"
- Four (4) strips of 17½ x 1½"
- Four (4) strips of 18½ x 1½"
- Two (2) strips of 37½ x 1½"

Fabric B:

- Cut One (1) WOF X 1½"
- Two (2) Square of 1½ x 1½"
- Four (4) Strips of 3½ x 1½"
- Two (2) Strips of 5½ x 1½"

Fabric C:

- Cut One (1) WOF X 1½"
- Two (2) Square of 1½ x 1½"
- Four (4) Strips of 3½ x 1½"
- Two (2) Strips of 5½ x 1½"

Fabric D

- Four (4) Square of 1½ x 1½"
- Two (2) Strips of 3½ x 1½"
- Two (2) Strips of 5½ x 1½"
- Two (2) Strips of 7½ x 1½"
- Two (2) Strips of 9½ x 1½"
- One Strip of 9½ x 1½"

## CONSTRUCTION

*Sew all rights sides together with ¼" seam allowance.*

For this Pillow we will be working in rows

- Row 1 ( 37 ½ 1½ strip from fabric A)
- Row 2 ( 18½ x 1½ strip from fabric A + 1½ x 1½ square from fabric D + 18½ x 1½ strip from fabric A)
- Row 3 ( 17½ x 1½ strip from fabric A + 3½ x 1½ strip from fabric D + 17½ x 1½ strip from fabric A)
- Row 4 ( 6 x 1½ strip from fabric A + 1½ x 1½ square from fabric B + 10 x 1½ strip from fabric A + 5½ x 1½ strip from fabric D + 10 x 1½ strip from fabric A + 1½ x 1½ square from fabric C + 6 x 1½ strip from fabric A)
- Row 5 ( 5 x 1½ strip from fabric A + 3½ x 1½ strip from fabric B + 8½ x 1½ strip from fabric A + 7½ x 1½ strip from fabric D + 8½ x 1½ strip from fabric A + 3½ x 1½ strip from fabric C + 5 x 1½ strip from fabric A)
- Row 6 ( 4 x 1½ strip from fabric A + 5½ x 1½ strip from fabric B + 6 x 1½ strip from fabric A + 9½ x 1½ strip from fabric D + 6 x 1½ strip from fabric A + 5½ x 1½ strip from fabric C + 4 x 1½ strip from fabric A)
- Row 7 ( 3 x 1½ strip from fabric A + 3½ x 1½ strip from fabric B + 1½ x 1½ square from fabric D + 3½ x 1½ strip from fabric B + 4 x 1½ strip from fabric A + 11½ x 1½ strip from fabric D + 4 x 1½ strip from fabric A + 3½ x 1½ strip from fabric C + 1½ x 1½ square from fabric D + 3½ x 1½ strip from fabric C + 3 x 1½ strip from fabric A)





