


X
X
X
X
X
X
X
X
X
X
X
X

EMBELISHED

The logo for 'capsules by AGF' features the word 'capsules' in a large, lowercase, serif font. Below the letters 'i', 'a', and 'l' are three small icons: a red and white grid, a black circle with a white 'a', and a yellow triangle. To the right of these icons is a stylized 'AGF' logo. The word 'by' is written in a cursive script below 'capsules'. The entire logo is set against a background of a dark, curved brushstroke.

XXXXXXXXXXXXXXXXXXXX

EMBELLISHED

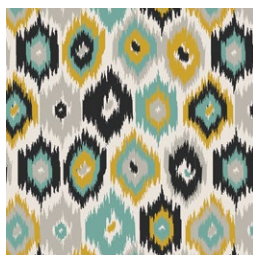
QUILT DESIGNED BY AGFstudio

<< CRAFTBOUND >>

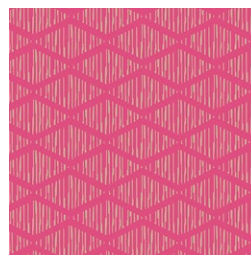
FABRICS DESIGNED BY AGFstudio



CAP-CR-1205
BLOSSOMING MOSAIC



CAP-CR-1208
BLURRY FRONTIERS



CAP-CR-1202
RHOMBI ABROAD



CAP-CR-1204
MARKED SIGHTS



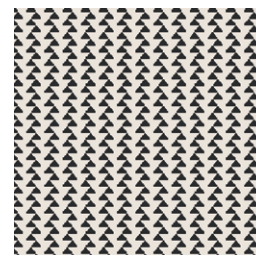
CAP-CR-1206
ETCHED CIVILIZATION



CAP-CR-1200
FANS ENFLOWERED



CAP-CR-1209
SOWING TRAILS



CAP-CR-1201
ZIGZAGGED PYRAMIDS



CAP-CR-1207
EAST WEST ARROWHEADS



CAP-CR-1203
CLOVER COMPASS





FINISHED SIZE 14" x 12"

FABRIC REQUIREMENTS

Fabric A	CAP-CR-1202	½ yd.
Fabric B	CAP-CR-1203	⅛ yd.
Fabric C	PE-407	⅛ yd.
Fabric D	DEN-S-2007	⅛ yd.
Fabric E	DEN-S-2000	⅓ yd.

LINING FABRIC

CAP-CR-1202 (Included)

CUTTING DIRECTIONS

¼" seam allowances are included.
WOF means width of fabric.

Fabric A
Four (4) Stripes WOF X 1.5"
Four (4) Squares of 14" x 12"

Fabric B
Four (4) Stripes WOF X 1.5"

Fabric C
Four (4) Stripes WOF X 1.5"

Fabric D
Four (4) Stripes WOF X 1.5"

Fabric D
Two (4) Stripes WOF X 5.5"

CONSTRUCTION

Sew all rights sides together with ¼" seam allowance. *RST* means Right Sides Together.

- For this clutch, we will be making eight (8) blocks; in which Four (4) of them will be **Block 1** and the other Four (4) will be **Block 2**

Block 1:

- Grab stripes from fabric **E, B,D,C,A**.
- Sew them together.

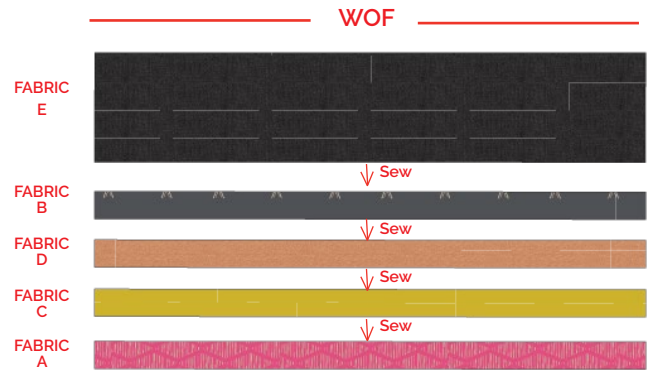


DIAGRAM 1

- Now with grab a ruler and tilt it counter clockwise at 45° angle and cut 24 stripes.. (See diagram)

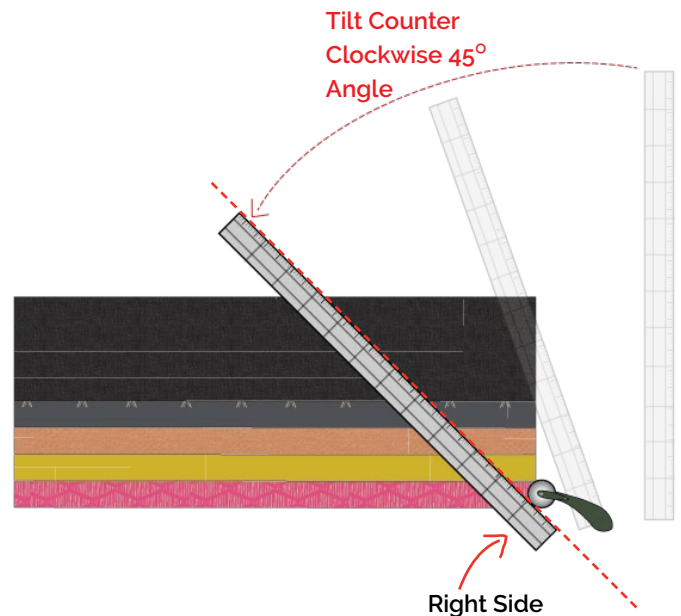


DIAGRAM 2

- We will end up with 24 stripes.
- We will create Four blocks out of the Twenty Four (4) Stripes



This is how the Stripe will look like

DIAGRAM 3

- Grab six stripes arrange them alternating the colors and sew . See diagram below.



This is how the Sewn Piece will look like

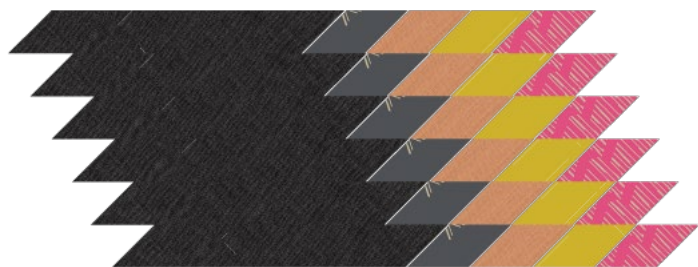


DIAGRAM 4

- Once you have all the stripes sewn, trim them at 7.5"x 6".

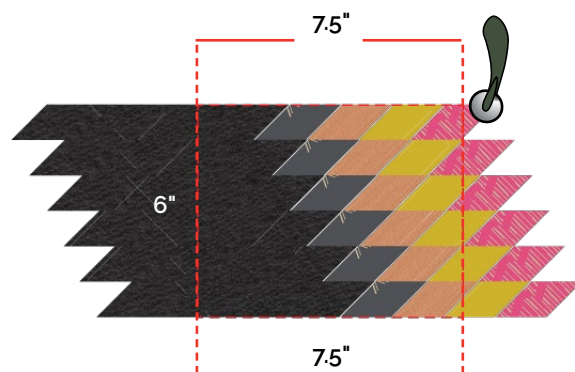


DIAGRAM 5

- Remember that we will need four blocks for the front of the clutch, So we will repeat this step 4 times and you will end up with four (4) blocks as it show on diagram below.



DIAGRAM 6

Block 2:

- Grab stripes from fabric **E, B,D,C,A.**
- Sew them together. (Referrer to diagram 1.)
- Grab a ruler and tilted **clockwise at 45°** angle. this time start from left side of the sewn piece. and cut 24 stripes. (See Diagram 7)

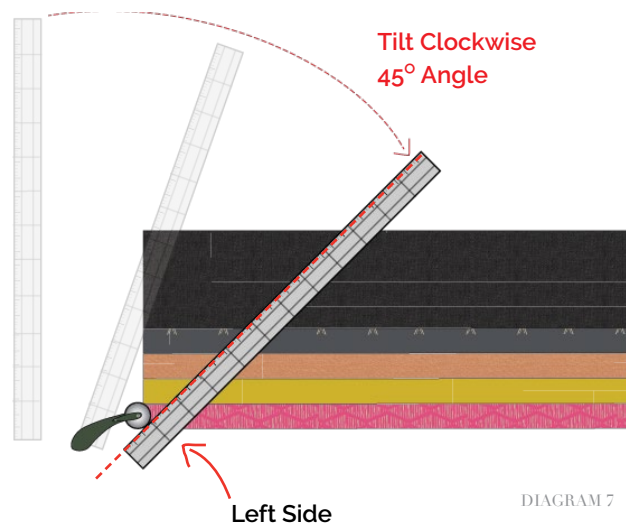


DIAGRAM 7

- Grab six stripes arrange them alternating the colors and sew . See diagram 8.



Sewn Pieces

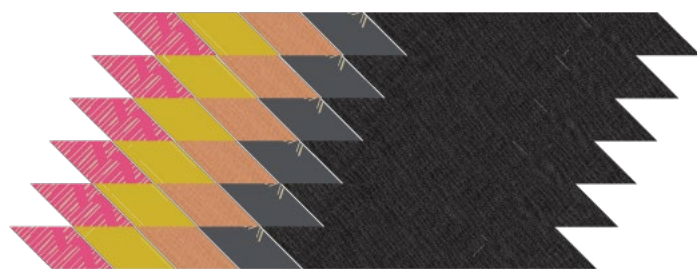


DIAGRAM 8

- Once you have all the stripes sewn, trim the block z at 7.5"x 6".

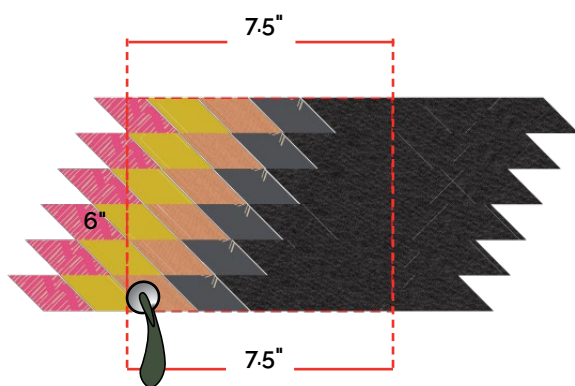


DIAGRAM 9

- Remember that we will need four blocks for the back of the clutch, So we will repeat this step 4 times and you will end up with four (4) blocks as it show on diagram below.

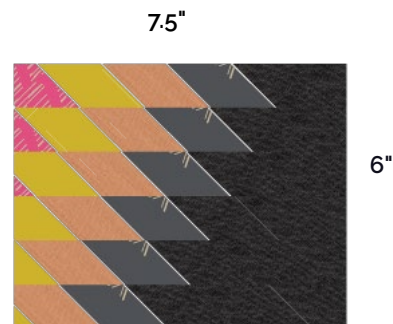
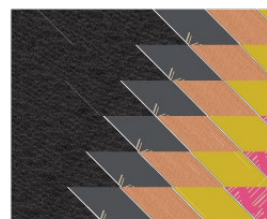


DIAGRAM 10

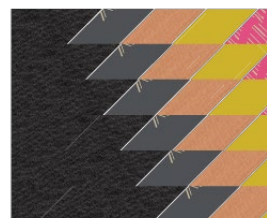
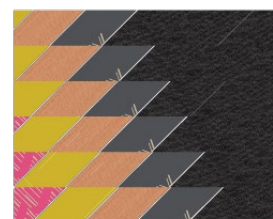
- Now grab two (2) **blocks1** and two (2) **Block2** arrange them as diagram below to create the front panel of the clutch and repeat the step one more time for the back panel of the clutch

Block 2

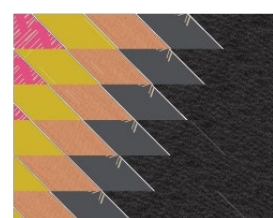
Block 1



Sew
→



Sew
→



Block 1

Block 2

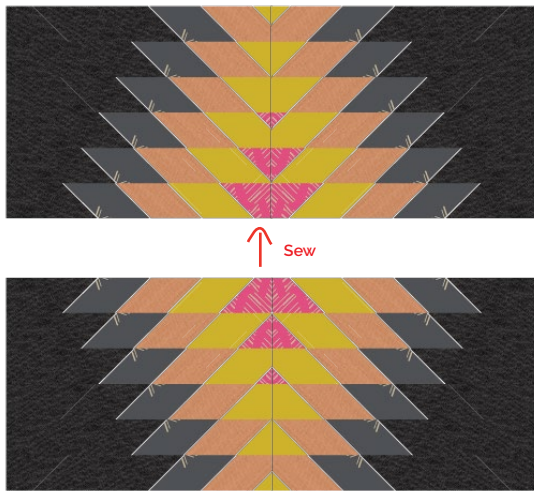


DIAGRAM 11

- Take your batting pieces and lay your front and back clutch on top and quilt as desired. This clutch was quilted around the edges of the final shape lines about $\frac{1}{4}$ " width apart.

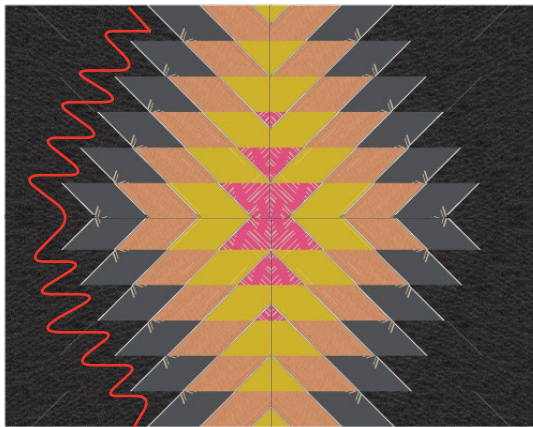


DIAGRAM 12

Zipper Construction

Insert your zipper foot-

- Take lining (Fabric A) and Front Block rectangle and sandwich them in between your zipper.
- Using a zipper foot sew as close to the zipper teeth as possible.
- Sew the two pieces of fabric with right sides together with the zipper sandwiched in between the two pieces of fabric
- Press fabric away from zipper and edge stitch the seam allowance to the lining sewing as close the edge as possible..
- Repeat process for the other side of the zipper using your other lining piece and your Back Block rectangle.

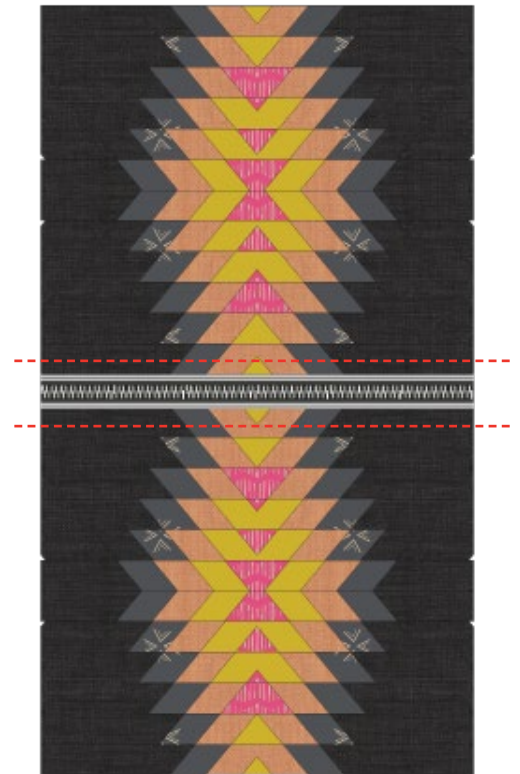


DIAGRAM 13

- Next step would be to sew at a $\frac{1}{4}$ " all around, leave an opening in the lining to be able to flip bag inside out.
- Once everything is sewn, flip bag through the opening.. then either hand stitch or sew the opening in the lining.



DIAGRAM 14



FEEL THE DIFFERENCE

artgalleryfabrics.com

NOTE: While all possible care has been taken to ensure the accuracy of this pattern, We are not responsible for printing errors or the way in which individual work varies.

Please read instructions carefully before starting the construction of this quilt. If desired, wash and iron your fabrics before starting to cut.

© 2018 Courtesy of Art Gallery Quilts LLC. All Rights Reserved.