

XXXXXX



XXXXXXXXXXXXXXXXXXXX



Elation

QUILT DESIGNED BY MAUREEN AGF

Sun Kissed

FABRICS DESIGNED BY MAUREEN CRACKNELL



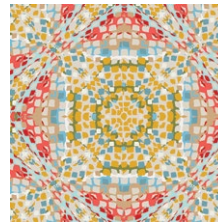
CLARY BREEZE



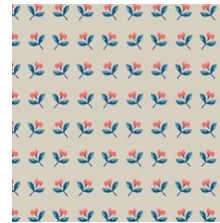
SKS-94300
SUMMERDRESS DREAMS RAY



SKS-94301
HAZY DAISIES SKY



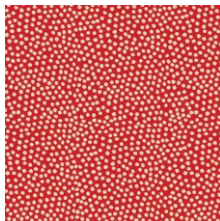
SKS-94302
KALEIDOSCOPE BEACHSIDE



SKS-94303
BASKING BUDS SAND



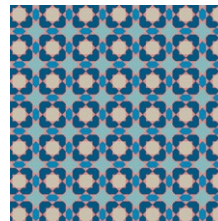
SKS-94304
FLORAL POPS LEMONADE



SKS-94305
SUNSPOTS STRAWBERRY



SKS-94307
PALM ISLAND ESCAPE



SKS-94308
POOL TILE BLUE



SKS-94309
BANDANA GRAPEFRUIT



SKS-94310
WOVEN TRAILS OCEAN

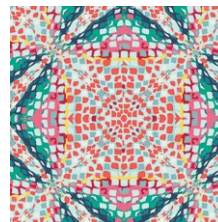
VIVID JOY



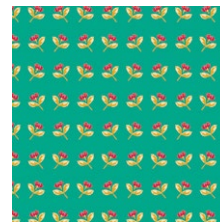
SKS-84300
SUMMERDRESS DREAMS TIDE



SKS-84301
HAZY DAISIES SCARLET



SKS-84302
KALEIDOSCOPE POOLSIDE



SKS-84303
BASKING BUDS JADE



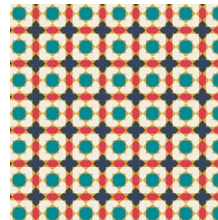
SKS-84304
FLORAL POPS CHERRY



SKS-84305
SUNSPOTS RASPBERRY



SKS-84306
SUNNY SIDE UP



SKS-84308
POOL TILE BURST



SKS-84309
BANDANA BANANA



SKS-84310
WOVEN TRAILS LAGOON



FEEL THE DIFFERENCE © 2018 Courtesy of Art Gallery Quilts LLC. All Rights Reserved.

Elation



FINISHED SIZE | 79" x 79"

FABRIC REQUIREMENTS

Fabric A	SKS-84305	½ yd.
Fabric B	SKS-84301	⅓ yd.
Fabric C	SKS-94305	⅓ yd.
Fabric D	SKS-94309	⅓ yd.
Fabric E	SKS-84300	½ yd.
Fabric F	SKS-94310	¼ yd.
Fabric G	SKS-94308	¼ yd.
Fabric H	SKS-94301	⅓ yd.
Fabric I	SKS-94307	⅓ yd.
Fabric J	SKS-94300	⅓ yd.
Fabric K	SKS-84309	½ yd.
Fabric L	SKS-94304	⅓ yd.
Fabric M	SKS-84310	½ yd.
Fabric N	SKS-84303	¼ yd.
Fabric O	FE-534	⅓ yd.
Fabric P	OE-940	⅓ yd.
Fabric Q	DEN -OYD-6000	⅓ yd.
Fabric R	DEN-S-2006	⅓ yd.
Fabric S	FE-513	⅓ yd.
Fabric T	OE-942	¼ yd.
Fabric U	FE-539	⅓ yd.
Fabric V	OE-914	¼ yd.
Fabric W	FE-529	⅓ yd.
Fabric X	PE-403	⅓ yd.
Fabric Y	DEN-S-2008	⅓ yd.

BACKING FABRIC

SKS-84303 5 yds. *(suggested)*

BINDING FABRIC

Fabric **K** SKS-84309 *(Included).*

CUTTING DIRECTIONS

*¼" seam allowances are included.
WOF means width of fabric.*

Fabrics **A, E, M:**

Cut Thirty three (33) 3⅞ x 3⅞ Squares

Fabrics **B, F, U:**

Cut Twenty (20) 3⅞ x 3⅞ Squares

Fabrics **C, G, V:**

Cut Fifteen (15) 3⅞ x 3⅞ Squares

Fabrics **D:**

Cut Eight (8) 3⅞ x 3⅞ Squares

Fabrics **H:**

Cut Nine (9) 3⅞ x 3⅞ Squares

Fabrics **I, L, X:**

Cut Two (2) 3⅞ x 3⅞ Squares

Fabrics **J, S:**

Cut Twenty one (21) 3⅞ x 3⅞ Squares

Fabrics **K, O:**

Cut Six (6) 3⅞ x 3⅞ Squares

Fabrics **N:**

Cut Thirteen (13) 3⅞ x 3⅞ Squares

Fabrics **P:**

Cut Five (5) 3⅞ x 3⅞ Squares

Fabrics **Q:**

Cut Eight (8) 3⅞ x 3⅞ Squares

Fabrics **R:**

Cut Twenty six (26) 3⅞ x 3⅞ Squares

Fabrics **T:**

Cut Eleven (11) 3⅞ x 3⅞ Squares

Fabric **W:**

Cut Four (4) 3⅞ x 3⅞ Squares

Fabrics **Y:**

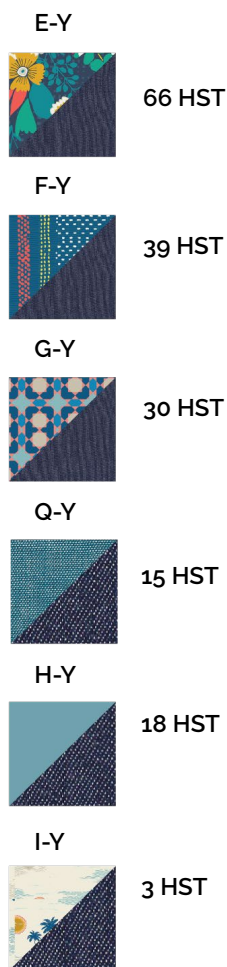
Cut Two hundred and forty seven (347) 3⅞ x 3⅞ Squares.

CONSTRUCTION

Sew all rights sides together with $\frac{1}{4}$ " seam allowance.

- This quilt is made out of HST (Half Square Triangles)
- We separate the quilt in four different section which we named. Blue Section, Green Section, Yellow Section and Red Section and each section has six different HST combinations (See diagram 2 and 3)

Blue Section

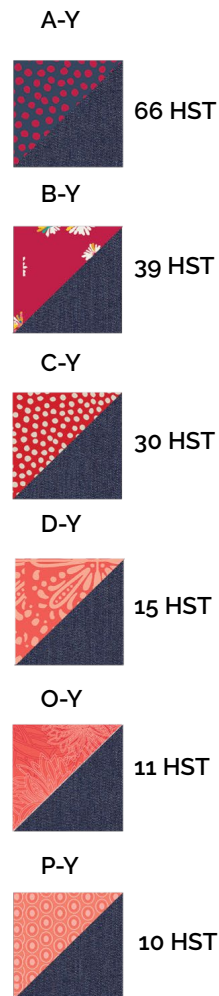


Green Section



DIAGRAM 2

Red Section



Yellow Section



DIAGRAM 3

HST CONSTRUCTION



Place the two squares right side together and mark a diagonal line on the wrong side of each square



Sew at $\frac{1}{4}$ " on both sides of the marked diagonal line.



Using a rotary blade cut the square into two triangles

DIAGRAM 4

Green Section:

Follow diagram for HST arrangement

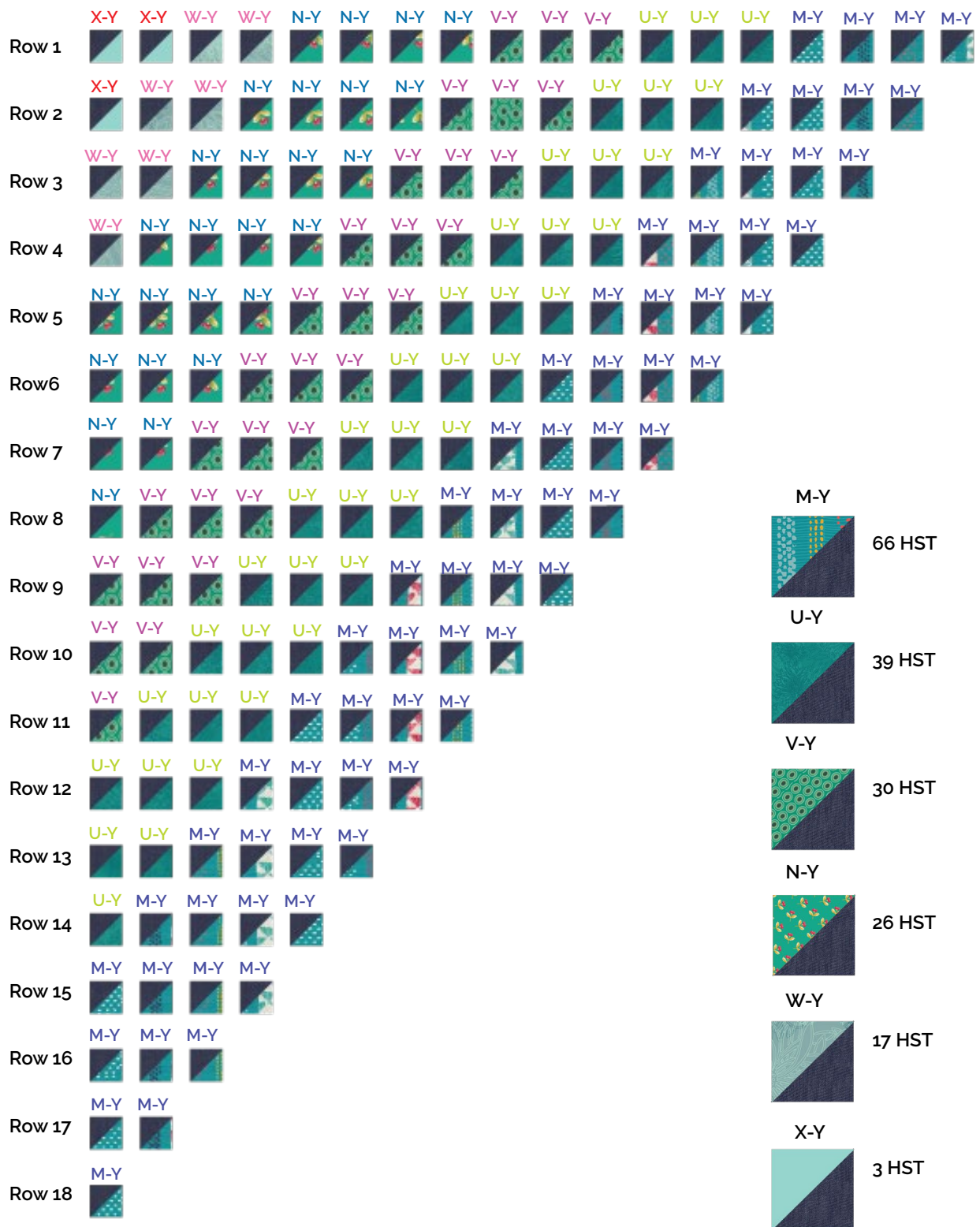


DIAGRAM 6

Red Section:

Follow diagram for HST arrangement

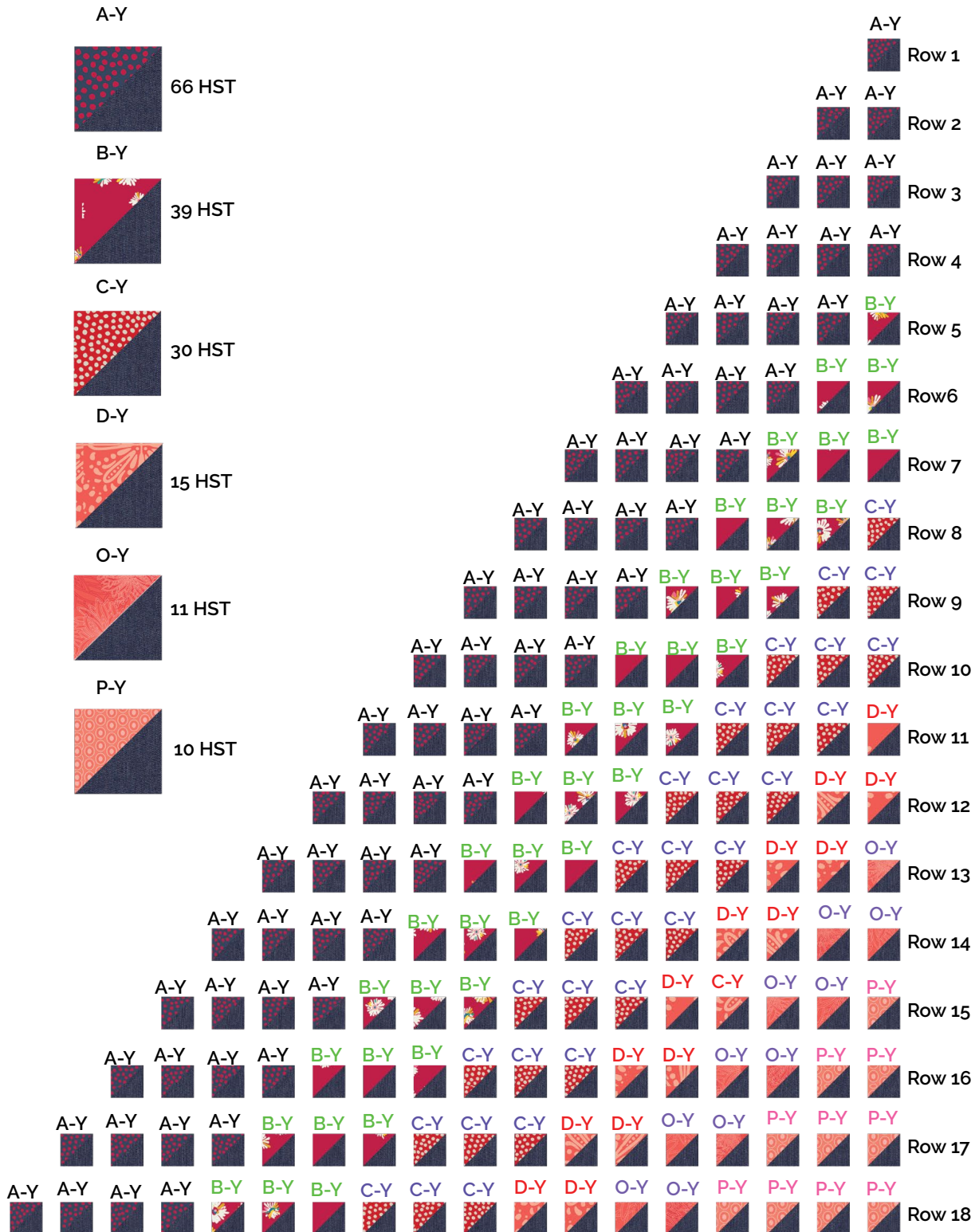
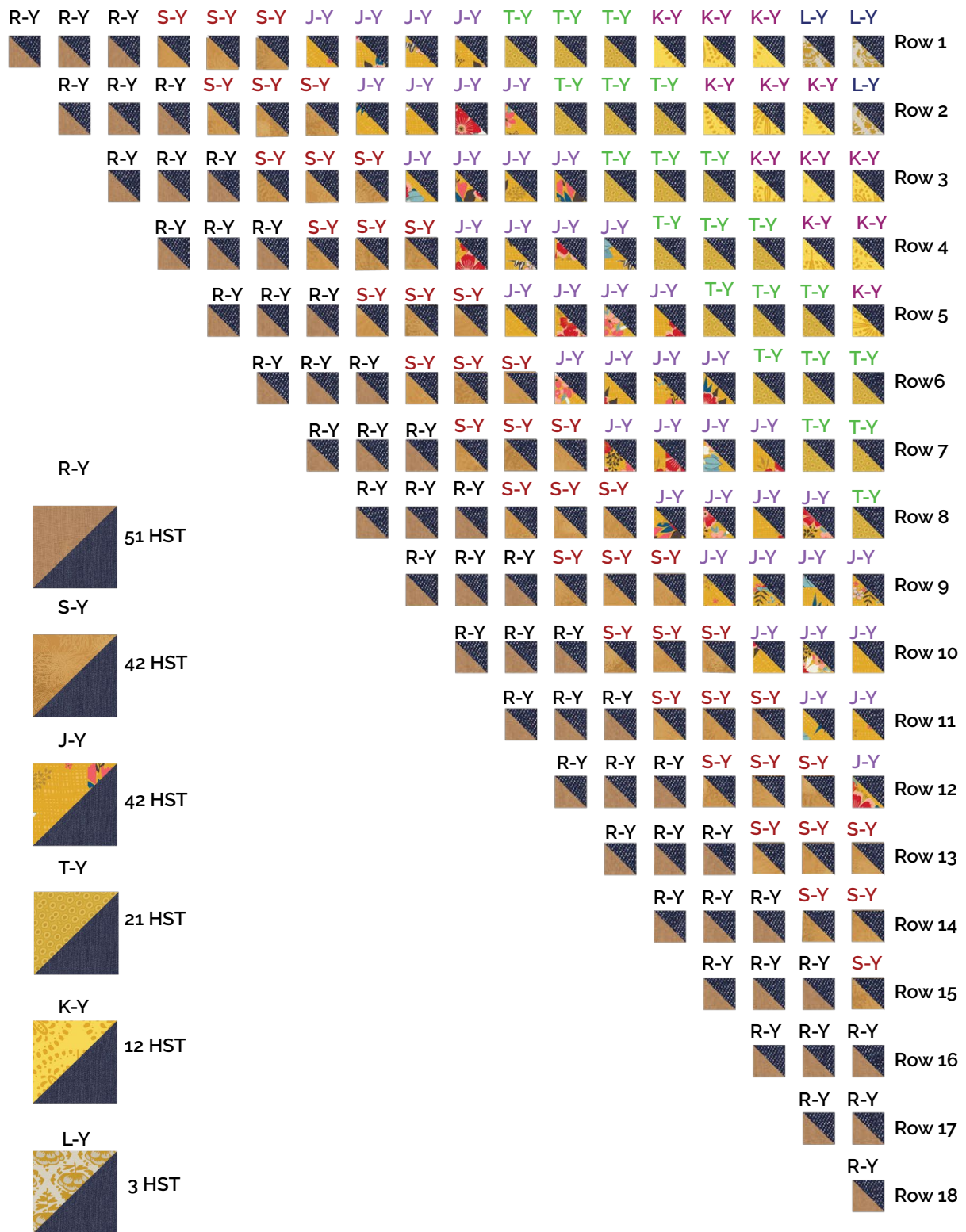


DIAGRAM 7

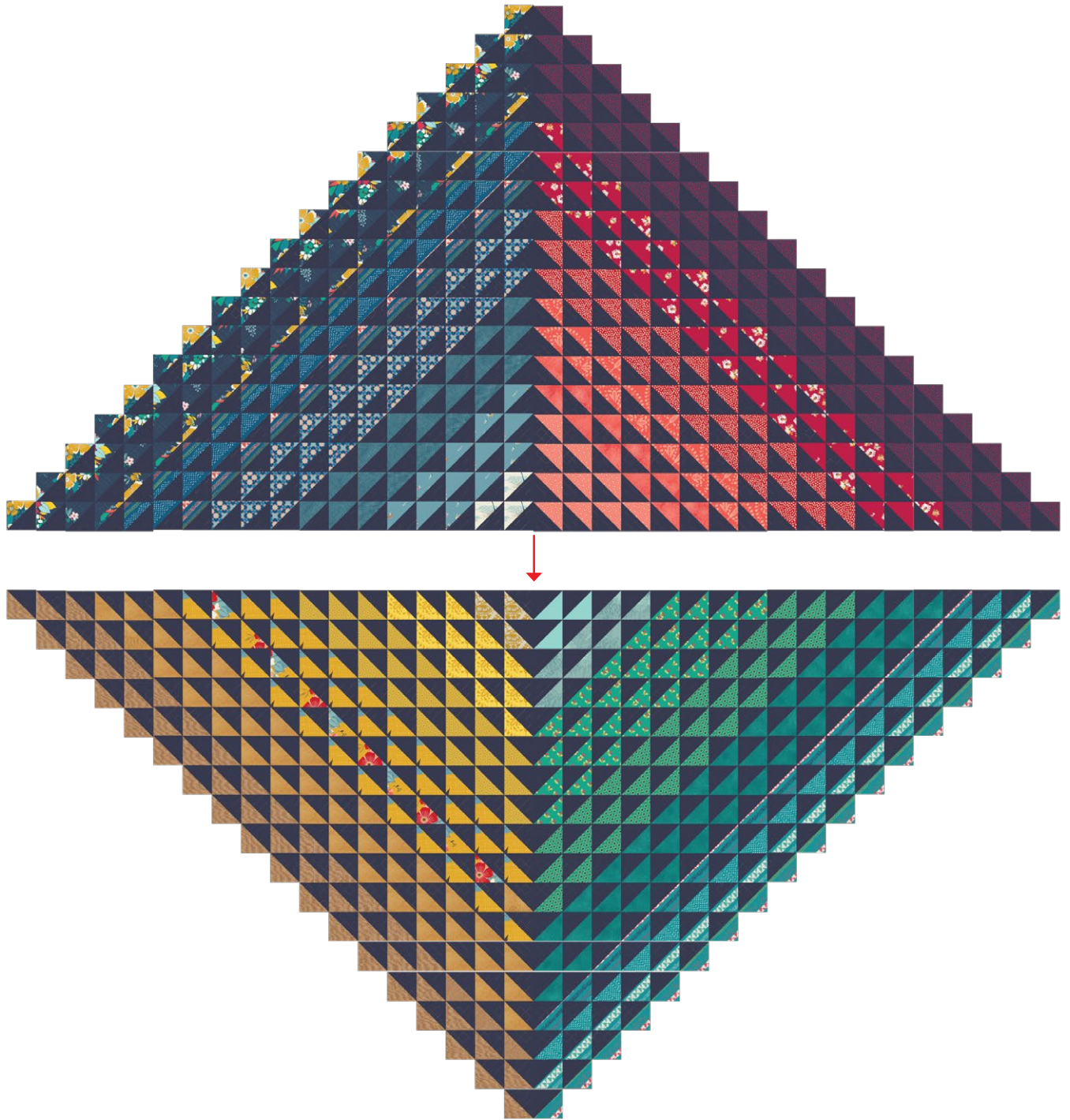
Yellow Section:

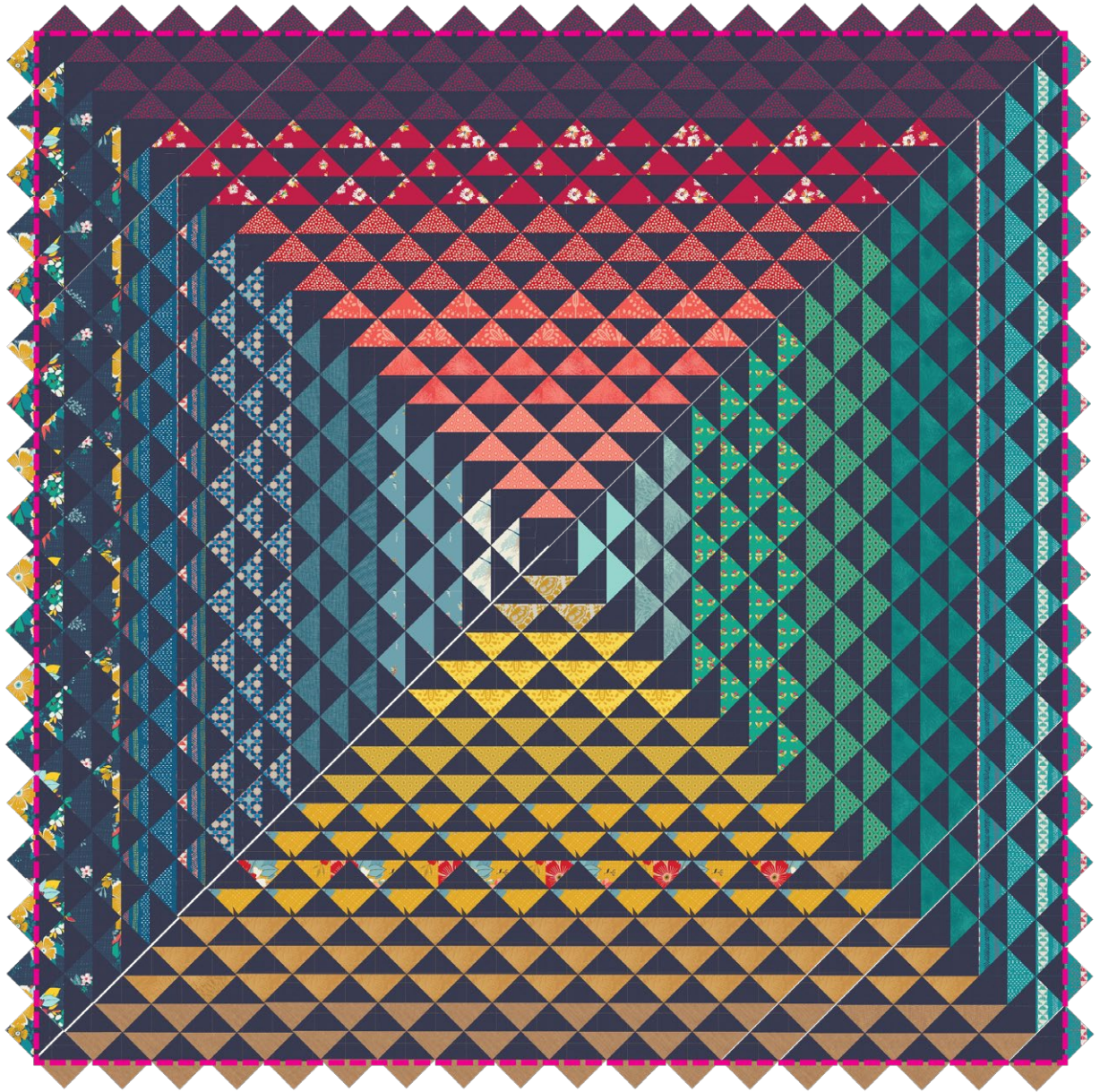
Follow diagram for HST arrangement





- artgalleryfabrics.com





QUILT ASSEMBLY

Sew rights sides together.

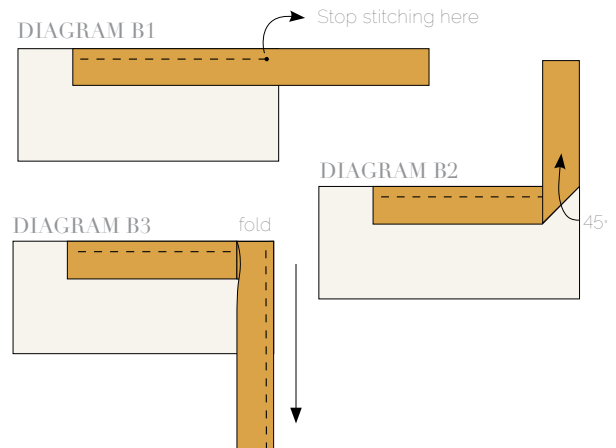
- Place BACKING FABRIC on a large surface wrong side up. Stretch it with masking tape against that surface.
- Place BATTING on top of backing fabric.
- Place TOP on top of the batting with right side facing up. Smooth away wrinkles using your hands.
- Pin all layers together and baste with basting thread, using long stitches. You can also use safety pins to join the layers.
- Machine or hand quilt starting at the center and working towards the corners. Remember that quilting motifs are a matter of personal preference. Have fun choosing yours!
- After you finish, trim excess of any fabric or batting, squaring the quilt to proceed to bind it.

BINDING

Sew rights sides together.

- Cut seven strips $1\frac{1}{2}$ " wide by the width of the fabric **K** to make a final strip 326" long. Start sewing the binding strip in the middle of one of the sides of the quilt, placing the strip right side down and leaving an approximated 5" tail. Sew with $\frac{1}{4}$ " seam allowance (using straight stitch), aligning the strip's raw edge with the quilt top's raw edge.
- Stop stitching $\frac{1}{4}$ " before the edge of the quilt (DIAGRAM B 1). Clip the threads. Remove the quilt from under the machine presser foot. Fold the strip in a motion of 45° and upward, pressing with your fingers (DIAGRAM B2). Hold this fold with your finger, bring the strip down in line with the next edge, making a horizontal fold that aligns with the top edge of the quilt (DIAGRAM B3). Start sewing at $\frac{1}{4}$ " of the border, stitching all the layers. Do the same in the four corners of the quilt.

- Stop stitching before you reach the last 5 or 6 inches. Cut the threads and remove the quilt from under the machine presser foot. Lay the loose ends of the binding flat along the quilt edge, folding the ends back on themselves where they meet. Press them together to form a crease. Using this crease as the stitching line, sew the two open ends of the binding with right sides together (you can help yourself marking with a pencil if the crease is difficult to see).
- Trim seam to $\frac{1}{4}$ " and press open. Complete the sewing. Turn binding to back of the quilt, turn raw edge inside and stitch by hand using blind stitch.



artgalleryfabrics.com

NOTE: While all possible care has been taken to ensure the accuracy of this pattern, We are not responsible for printing errors or the way in which individual work varies. Please read instructions carefully before starting the construction of this quilt. If desired, wash and iron your fabrics before starting to cut.