

X
X
X
X
X
X
X
X
X
X
X
X

Two large, colorful, fan-shaped earrings are displayed against a light beige background. Each earring has a black hook and a black band at the bottom. The left earring features a pattern of orange, black, and white flowers with green leaves. The right earring features a pattern of orange, black, and white flowers with green leaves, similar to the left one but with a different arrangement.

by AGF

XXXXXXXXXXXXXXXXXXXX

UCHIWA EARRINGS



FABRICS DESIGNED BY AGF STUDIO



FUS-SR-1702
SOULMATE BLOOMS SILKROAD



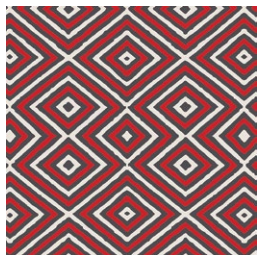
FUS-SR-1706
MAGNOLIA STUDY SILKROAD



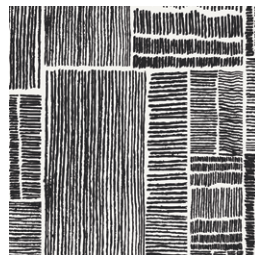
FUS-SR-1705
VINE SILKROAD



FUS-SR-1700
AQUARELLA SILKROAD



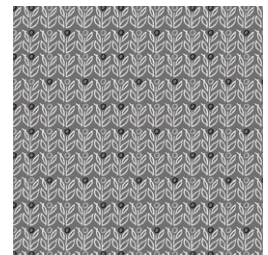
FUS-SR-1704
MIXED EMOTIONS SILKROAD



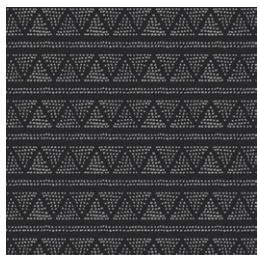
FUS-SR-1707
LABYRINTH IMPRESSION SILKROAD



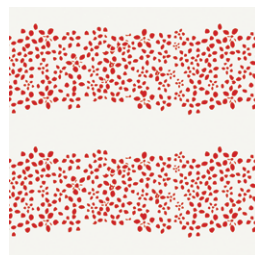
FUS-SR-1708
MILLEFIORI SILKROAD



FUS-SR-1703
WALLFLOWER SILKROAD



FUS-SR-1701
PLOTTED FARM SILKROAD



FUS-SR-1709
A PATH OF SILKROAD



FEEL THE DIFFERENCE © 2018 Courtesy of Art Gallery Quilts LLC. All Rights Reserved.

UCHIWA EARRINGS

FINISHED SIZE | 1" x 3³/₄"

FABRIC REQUIREMENTS

Fabric **A** FUS-SR-1708 F8

Additional Material

- Faux Leather
- Jump rings
- Earring Hooks
- Jewelry pliers
- Hot glue

CUTTING DIRECTIONS

*1/4" seam allowances are included.
WOF means width of fabric.*

- Two (2) of Template 2 from Fabric **A**
- Four (4) of Template 1 from **Faux Leather**

CONSTRUCTION

Sew all rights sides together with 1/4" seam allowance.

- Take (2) Faux Leather pieces from Template 1 and hot glue them (wrong sides facing)
- Repeat the same for the other two Template 1 pieces
- Take (1) Fabric **A**, Template 2 and place it on the top edge (right side facing out), and hot glue carefully.
- Repeat the same for the other earring.

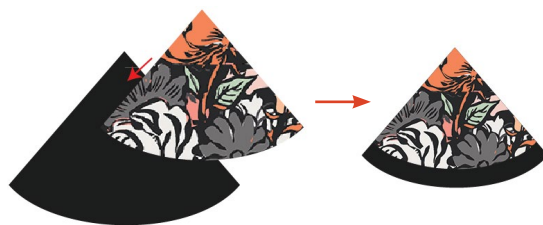


DIAGRAM 1

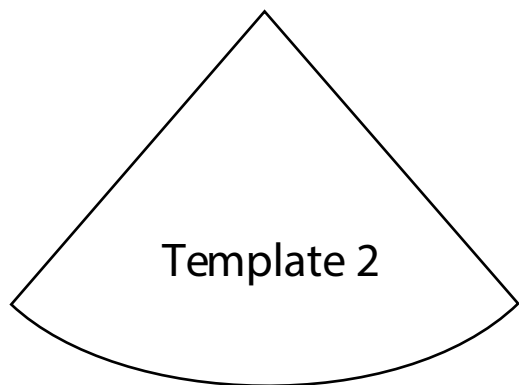
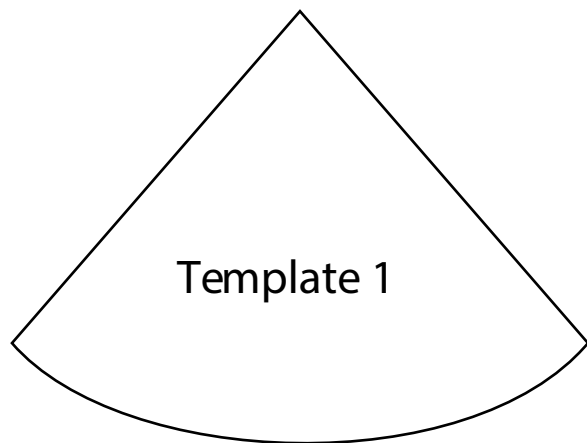
- Insert a pin needle or anything that will go through the earring piece in order to attach a jump ring and your earring hook.
- Close the jump ring and repeat the same process for the other earring.
- Enjoy your new pair of earrings!



DIAGRAM 2

XXXXXXXXXXXXXXXXXXXXXXXXXXXXXXXXXXXX

TEMPLATES



XXXXXXXXXXXXXXXXXXXXXXXXXXXXXXXXXXXX

Congratulations
& enjoy

XXXXXXXXXXXXXXXXXXXXXXXXXXXXXXXXXXXX



artgalleryfabrics.com

NOTE: While all possible care has been taken to ensure the accuracy of this pattern, We are not responsible for printing errors or the way in which individual work varies. Please read instructions carefully before starting the construction of this quilt. If desired, wash and iron your fabrics before starting to cut.

© 2018 Courtesy of Art Gallery Quilts LLC. All Rights Reserved.