

# Tinkseed



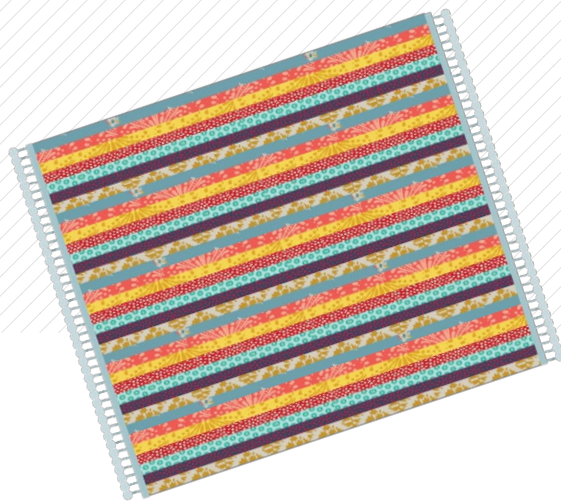




QUILT DESIGNED BY MAUREEN CRACKNELL



FABRICS DESIGNED BY MAUREEN CRACKNELL



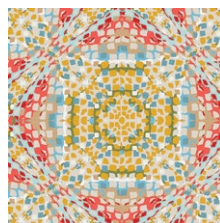
CLARY BREEZE



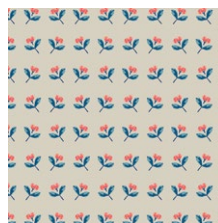
SKS-94300  
SUMMERDRESS DREAMS RAY



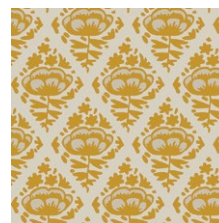
SKS-94301  
HAZY DAISIES SKY



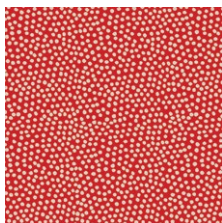
SKS-94302  
KALEIDOSCOPE BEACHSIDE



SKS-94303  
BASKING BUDS SAND



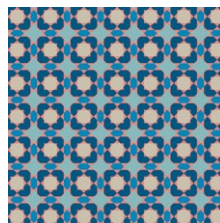
SKS-94304  
FLORAL POPS LEMONADE



SKS-94305  
SUNSPOTS STRAWBERRY



SKS-94307  
PALM ISLAND ESCAPE



SKS-94308  
POOL TILE BLUE

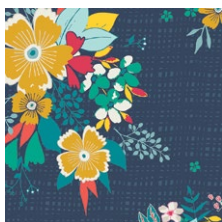


SKS-94309  
BANDANA GRAPEFRUIT

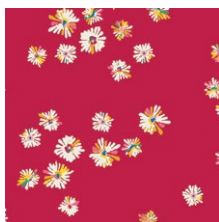


SKS-94310  
WOVEN TRAILS OCEAN

VIVID JOY



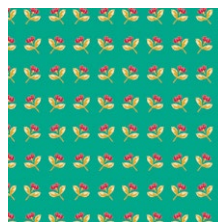
SKS-84300  
SUMMERDRESS DREAMS TIDE



SKS-84301  
HAZY DAISIES SCARLET



SKS-84302  
KALEIDOSCOPE POOLSIDE



SKS-84303  
BASKING BUDS JADE



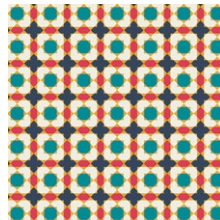
SKS-84304  
FLORAL POPS CHERRY



SKS-84305  
SUNSPOTS RASPBERRY



SKS-84306  
SUNNY SIDE UP



SKS-84308  
POOL TILE BURST



SKS-84309  
BANDANA BANANA



SKS-84310  
WOVEN TRAILS LAGOON



FEEL THE DIFFERENCE © 2018 Courtesy of Art Gallery Quilts LLC. All Rights Reserved.





## FABRIC REQUIREMENTS

Fabric A	SKS-94301	$\frac{5}{8}$ yd.
Fabric B	SKS-94309	$\frac{5}{8}$ yd.
Fabric C	SKS-84309	$\frac{5}{8}$ yd.
Fabric D	SKS-94305	$\frac{5}{8}$ yd.
Fabric E	OE-900	$\frac{5}{8}$ yd.
Fabric F	SKS-84305	$\frac{5}{8}$ yd.
Fabric G	SKS-94304	$\frac{5}{8}$ yd.

BACKING FABRIC  
SKS-84309 1  $\frac{3}{4}$  yds. (Suggested)

## CUTTING DIRECTIONS

$\frac{1}{4}$ " seam allowances are included.  
WOF means width of fabric.

- Cut Ten (10) Stripes of WOF X 2" from fabric A,B,C,D,E,F,G,

## CONSTRUCTION

Sew all rights sides together with  $\frac{1}{4}$ " seam allowance.

- This throw is made out of ten (10) identical sections
- Each section will require one (1) strip from fabrics A,B,C,D,E,F,G.
- Sew stripe A -B-C-D-E-F-G. and repeat the same step 9 more times. (See Diagram 1)

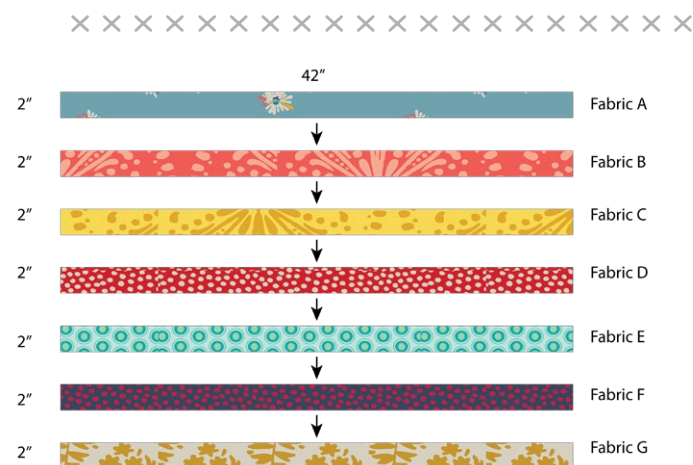


DIAGRAM 1

- You should end up with ten(10) sections of WOF x  $12\frac{1}{2}$ .



DIAGRAM 2

- Now take five (5) WOF X  $12\frac{1}{2}$ " sections and sew them together as shown on Diagram 3.
- (Repeat this step one(1) more time.

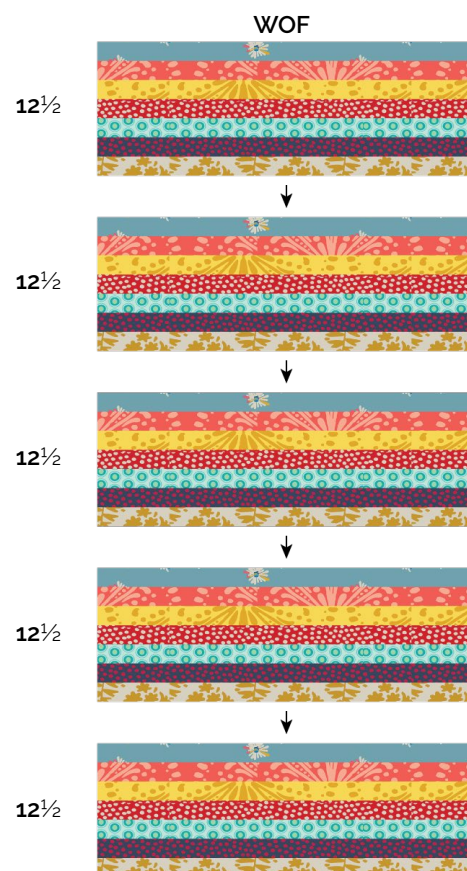


DIAGRAM 3

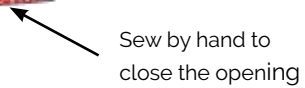
- artgalleryfabrics.com



A large, vibrant, and complex abstract pattern. It features a series of horizontal stripes in various colors including red, yellow, blue, green, and orange. Each stripe is filled with different geometric and organic motifs: some have small dots, others have larger stars or floral-like shapes, and some have a textured, almost woven appearance. The pattern is dense and colorful, with a red border visible on the right side.



artgalleryfabrics.com



This step is optional, you can add a decorative trim, in this case we used pom pom trim and sew them to the sides of the duvet.



DIAGRAM 5





DIAGRAM 6



[artgalleryfabrics.com](http://artgalleryfabrics.com)

*NOTE: While all possible care has been taken to ensure the accuracy of this pattern, We are not responsible for printing errors or the way in which individual work varies. Please read instructions carefully before starting the construction of this quilt. If desired, wash and iron your fabrics before starting to cut.*

© 2018 Courtesy of Art Gallery Quilts LLC. All Rights Reserved.