

Popsicle





Popsicle

QUILT DESIGNED BY MAUREEN AGF

Sun Kissed

FABRICS DESIGNED BY MAUREEN CRACKNELL



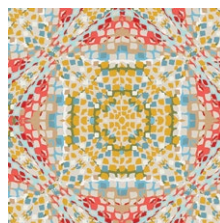
CLARY BREEZE



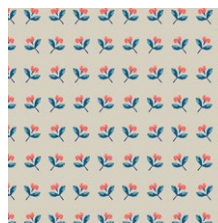
SKS-94300
SUMMERDRESS DREAMS RAY



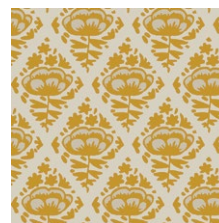
SKS-94301
HAZY DAISIES SKY



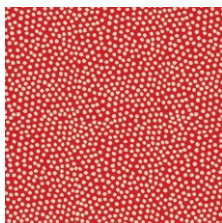
SKS-94302
KALEIDOSCOPE BEACHSIDE



SKS-94303
BASKING BUDS SAND



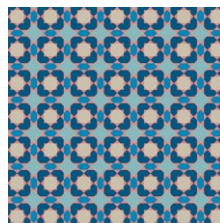
SKS-94304
FLORAL POPS LEMONADE



SKS-94305
SUNSPOTS STRAWBERRY



SKS-94307
PALM ISLAND ESCAPE



SKS-94308
POOL TILE BLUE

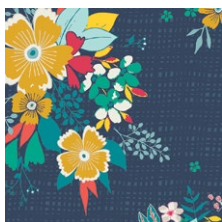


SKS-94309
BANDANA GRAPEFRUIT

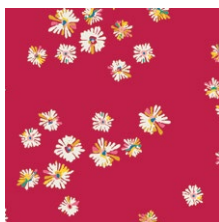


SKS-94310
WOVEN TRAILS OCEAN

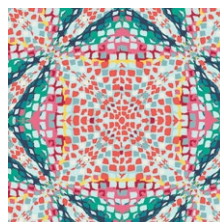
VIVID JOY



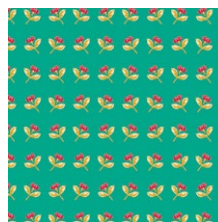
SKS-84300
SUMMERDRESS DREAMS TIDE



SKS-84301
HAZY DAISIES SCARLET



SKS-84302
KALEIDOSCOPE POOLSIDE



SKS-84303
BASKING BUDS JADE



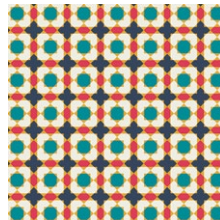
SKS-84304
FLORAL POPS CHERRY



SKS-84305
SUNSPOTS RASPBERRY



SKS-84306
SUNNY SIDE UP



SKS-84308
POOL TILE BURST



SKS-84309
BANDANA BANANA



SKS-84310
WOVEN TRAILS LAGOON



FEEL THE DIFFERENCE © 2018 Courtesy of Art Gallery Quilts LLC. All Rights Reserved.



FINISHED SIZE | 27" x 27"

FABRIC REQUIREMENTS

Fabric A	SKS-84309	¼ yd.
Fabric B	SKS-94305	¼ yd.
Fabric C	SKS-94301	¼ yd.
Fabric D	SKS-94309	¼ yd.
Fabric E	OE-900	¼ yd.
Fabric F	SKS-84303	¼ yd.
Fabric G	SKS-84305	¼ yd.
Fabric H	SKS-94304	¼ yd.

BACKING FABRIC

SKS-84309 ¾ yds. *(Suggested)*

CUTTING DIRECTIONS

*¼" seam allowances are included.
WOF means width of fabric.*

- Cut Ten (10) Strips of WOF X 1" from fabric A,B,C,D,E,F,G,H.
- Sub-cut Twenty (20) Strips of 20½" x 1" from fabric A,B,C,D,E,F,G,H.

CONSTRUCTION

Sew all rights sides together with ¼" seam allowance.

- The Popsicle Pillow is made out of four (4) identical blocks
- Each block will require four (4) identical sections
- Each section will require one (1) stripe from fabrics A,B,C,D,E,F,G,H
- Sew stripe A -B-C-D-E-F-G-H and repeat the same step 19 more times. (See Diagram 1)

XXXXXXXXXXXXXXXXXXXXXXXXXXXXXXXXXXXX

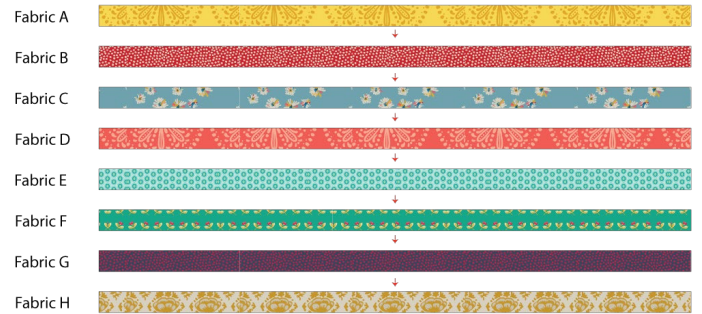


DIAGRAM 1

- You should end up with twenty (20) sections of 20½ x 4½.

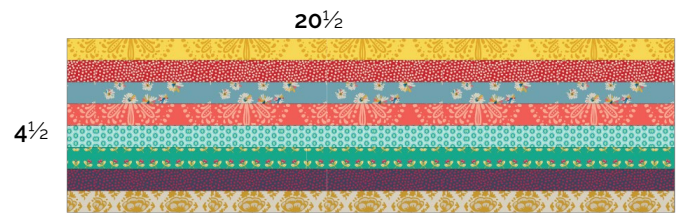


DIAGRAM 2

- Now take five (5) 20½ x 4½ " section and sew them together
- (Repeat this step three (3) more times)

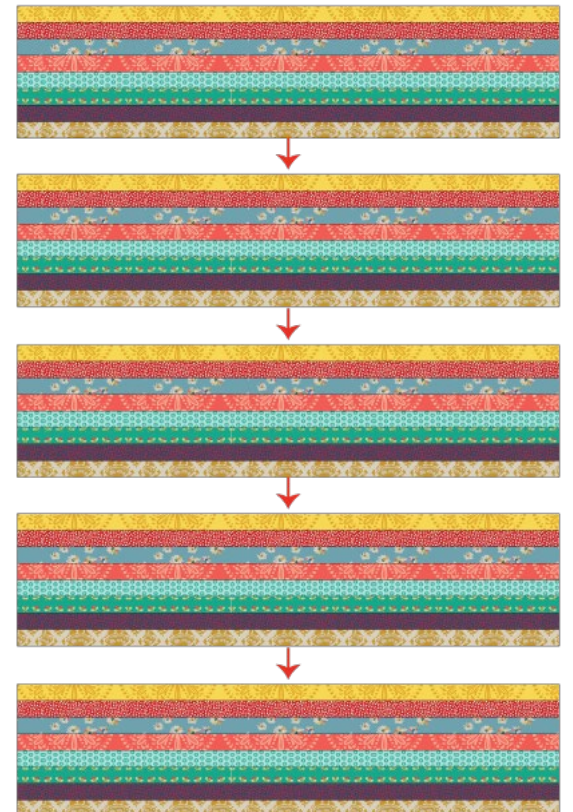


DIAGRAM 3

- Once you have the Five (5) Sections sewn.
- Cut a $13\frac{1}{2} \times 13\frac{1}{2}$ square on a paper or cardboard to use it as a template
- Place the $13\frac{1}{2} \times 13\frac{1}{2}$ template on top of one $20\frac{1}{2} \times 20$ section and rotate it until the template is on point. Repeat the same step three more times (See Diagram below for reference)

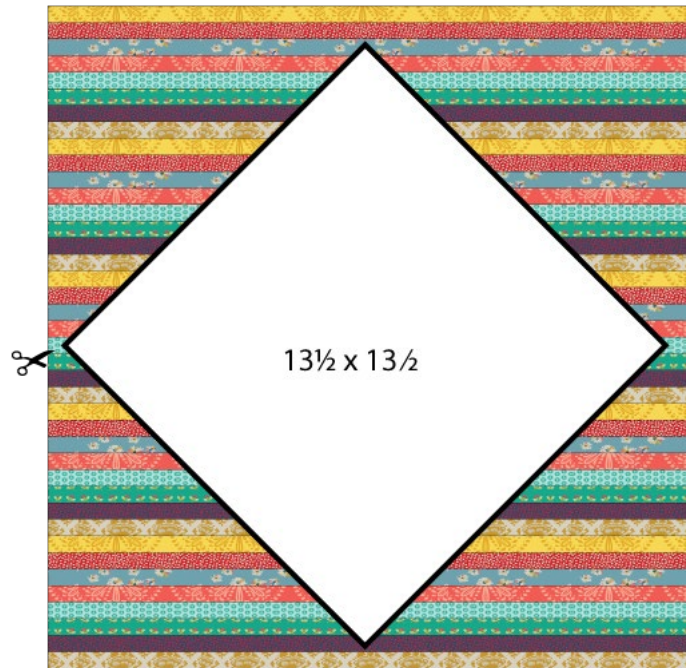


DIAGRAM 4

Sew blocks together following Diagram 5 and 6



DIAGRAM 5



Sew
↓



DIAGRAM 6

CREATING THE BACK PILLOW

*Sew all rights sides together with 1/4" seam allowance.
Press open.*

- To make a envelope back for your pillow take both 27½" x 19" rectangles and fold one 17" side on each rectangle in 1/2" and press and then fold another 1/2" and press.
- Top stitch as close to the edge as possible.
- Place rectangles right side together on top of each other to the front of your pillow and stitch all the way around your pillow at 1/4" seam allowance.
- Clip corners at seam allowance and flip piece to the right side of the fabric.
- Fill pillow with a 27" x 27" pillow form and enjoy!



artgalleryfabrics.com

*NOTE: While all possible care has been taken to ensure the accuracy of this pattern, We are not responsible for printing errors or the way in which individual work varies.
Please read instructions carefully before starting the construction of this quilt. If desired, wash and iron your fabrics before starting to cut.*

© 2018 Courtesy of Art Gallery Quilts LLC. All Rights Reserved.