

XXXXXX

# Maze

The logo for 'FUSIONS' is displayed in a large, dark blue, sans-serif font. The letter 'O' is replaced by a stylized sun icon with a yellow center and radiating lines. The letters 'F', 'U', 'S', and 'I' have small, colorful rectangular accents (teal, orange, yellow, and pink respectively) on their right sides. The letters 'N' and 'S' have small, colorful rectangular accents (pink and red respectively) on their left sides.

by AGF

## FREE PATTERN

XXXXXXXXXXXXXXXXXXXXXXXXXXXX



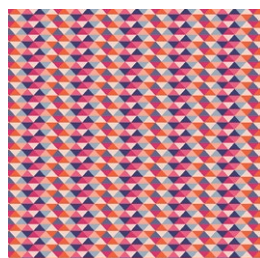
# Maze

PILLOW DESIGNED BY AGFstudio

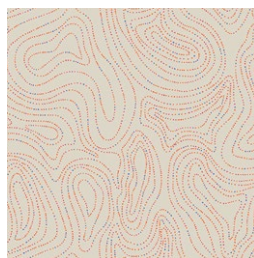
ARTDISTRICT FUSION



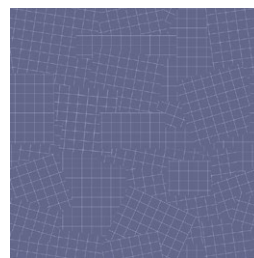
FABRICS DESIGNED BY AGF STUDIO



FUS-AD-1607  
TRIPixels DISTRICT



FUS-AD-1601  
WAVES OF ECHO DISTRICT



FUS-AD-1608  
PHONOGRAPHIC GRIDS DISTRICT

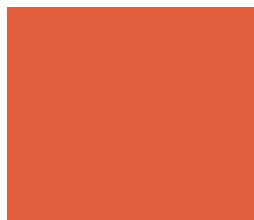


FUS-AD-1606  
CITY SOUNDS DISTRICT

## ADDITIONAL BLENDERS FOR THIS PROJECT



PE-428  
NOCTURNAL



PE-461  
TIGERLILY



FEEL THE DIFFERENCE © 2018 Courtesy of Art Gallery Quilts LLC. All Rights Reserved.



FINISHED SIZE | 17" x 17"

## FABRIC REQUIREMENTS

Fabric <b>A</b>	FUS-AD-1607	F8.
Fabric <b>B</b>	FUS-AD-1601	F8.
Fabric <b>C</b>	FUS-AD-1608	F8.
Fabric <b>D</b>	FUS-AD-1606	FQ.
Fabric <b>E</b>	PE-428	F8.
Fabric <b>F</b>	PE-461	F8.

### BACKING FABRIC

FUS-AD-1606 Fabric **D** (Included).

## CUTTING DIRECTIONS

*1/4" seam allowances are included.  
WOF means width of fabric.*

### Fabric **A**

- Cut Template P3L and P3R.

### Fabric **B**

- Cut Template P4L and P2R

### Fabric **C**

- Cut Template P1L

### Fabric **D**

- Cut Two (2) rectangles 17" x 10".

### Fabric **E**

- Cut Template P2L.
- Cut Two (2) squares of 3" x 3"

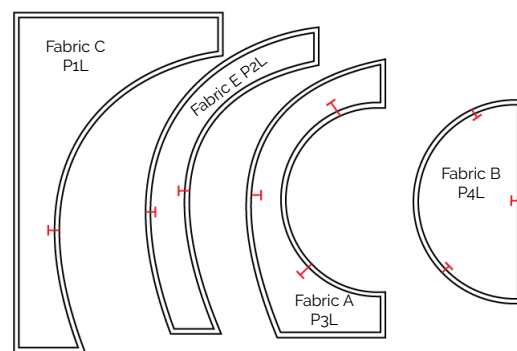
### Fabric **F**

- Cut Template P1R.

## CONSTRUCTION

*Sew all rights sides together with 1/4" seam allowance.*

- For this fun pillow we will use templates P1L, P2L, P3L, P4L for the left side of the pillow.
- You will see the template name written on each template as well as fabric letter.



- P1R, P2R, P3R are for the right side of the pillow.

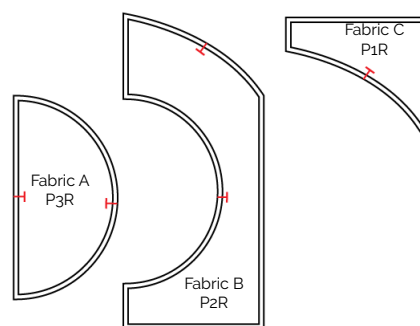


DIAGRAM 1

- After you cut all patterns with designated fabric. We will start building the left side of the pillow first.
- Sew P1L > P2L > P3L > P4L
- Make sure to match the notches on each curve before you sew, we recommend to pin fabrics before sewing.

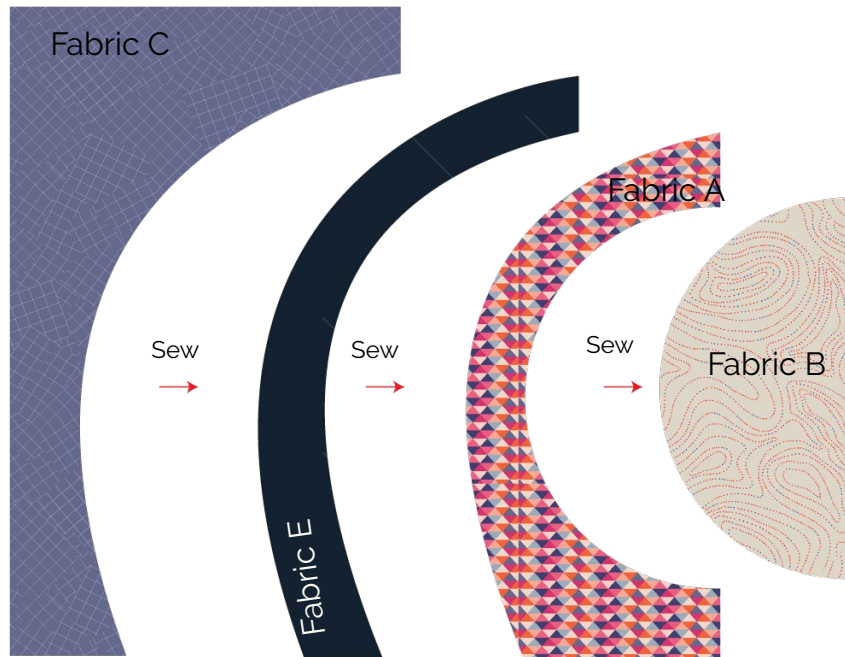


DIAGRAM 2

- After sewing all left patterns you will get the left block. See diagram below.

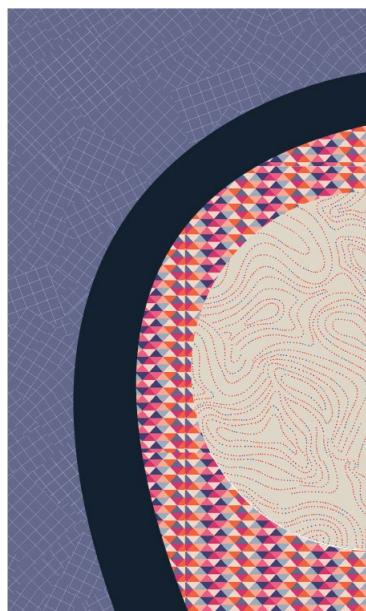


DIAGRAM 3



- Sew pattern P1R > P2R > P3R make sure to match notches that will help you to sew curves smoothly .
- After sewn all right side patterns you will get your right block. See diagram below.

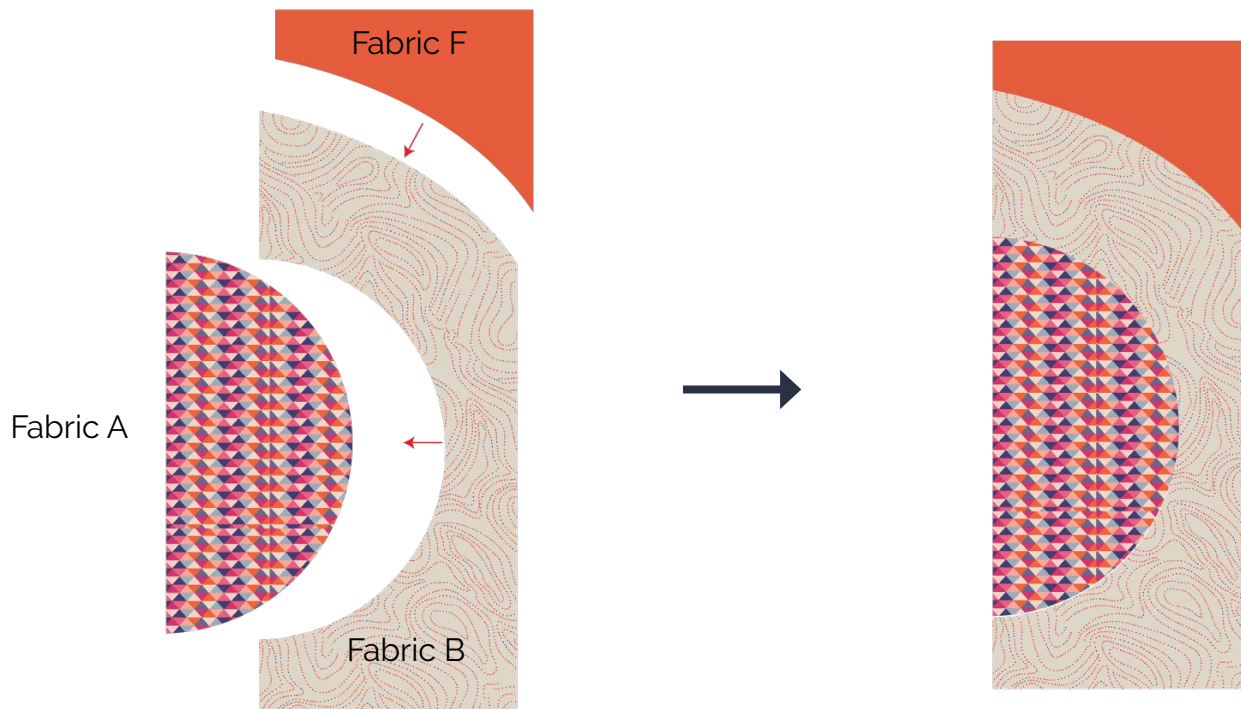


DIAGRAM 4

- Once we have right block and left block we can sew them together. (See diagram below)

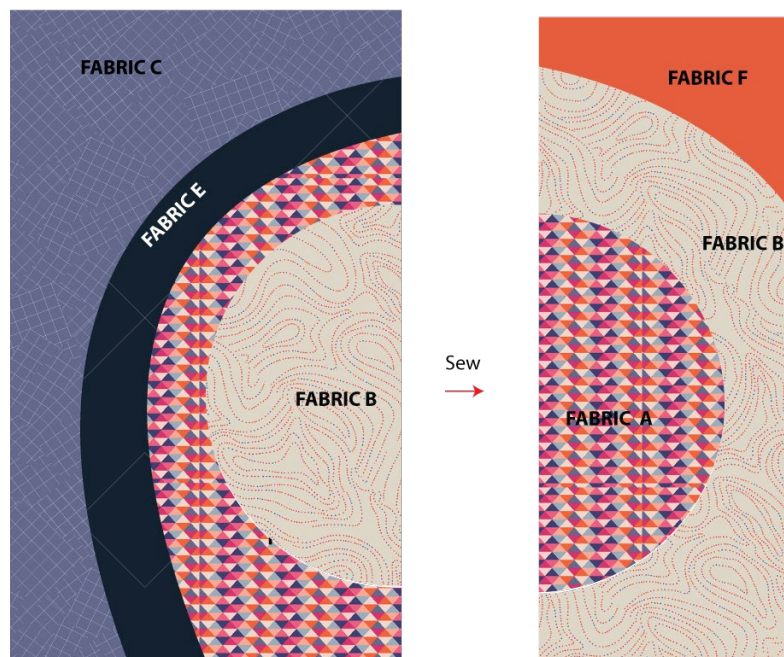
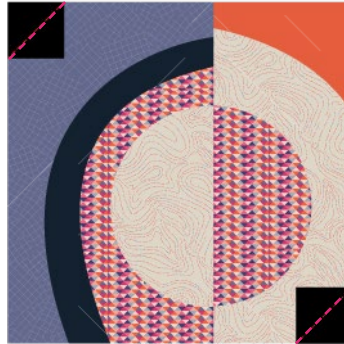


DIAGRAM 5

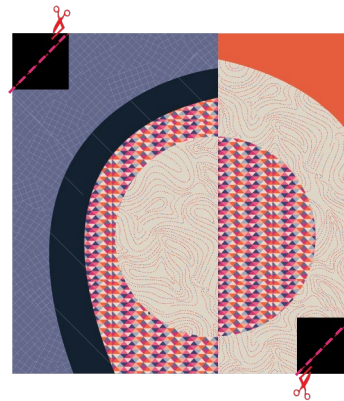
- Now take the two (2) 3" x 3" squares from fabric **E** and sew them on the top left corner of the main piece and the other square on the right bottom corner.
- Then cut excess fabric and press the seams towards the darkest fabric. See diagram below.

Sew the  
3" X 3" Square



Sew the  
3" X 3" Square

Trim and Press



Trim and Press

DIAGRAM 6

## CREATING THE BACK PILLOW

*Sew all rights sides together with ¼" seam allowance. Press open.*

- Take both 17½" x 14" rectangles from fabric **D**.
- Fold one 14" edge ½" towards the wrong side of the fabric of each rectangle.
- Fold the same edge ½" again and edge stitch the fold in place to have a clean edge.
- Take the quilted pillow top and lay it flat right side up.
- Take one rectangle from fabric **D** and align it wrong side up to the right side of the pillow top.
- Take the other rectangle from fabric **D** and align it wrong side up to the left side of the pillow top.
- Pin the three pieces in place and sew around the edges at ¼".
- Clip the corners and flip the piece to the right side of the fabric.
- Fill the pillow with a 17" x 17" pillow form and enjoy!

XXXXXXXXXXXXXXXXXXXXXXXXXXXXXXXXXXXX

*Congratulations*  
*& enjoy*

XXXXXXXXXXXXXXXXXXXXXXXXXXXXXXXXXXXX

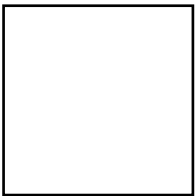


[artgalleryfabrics.com](http://artgalleryfabrics.com)

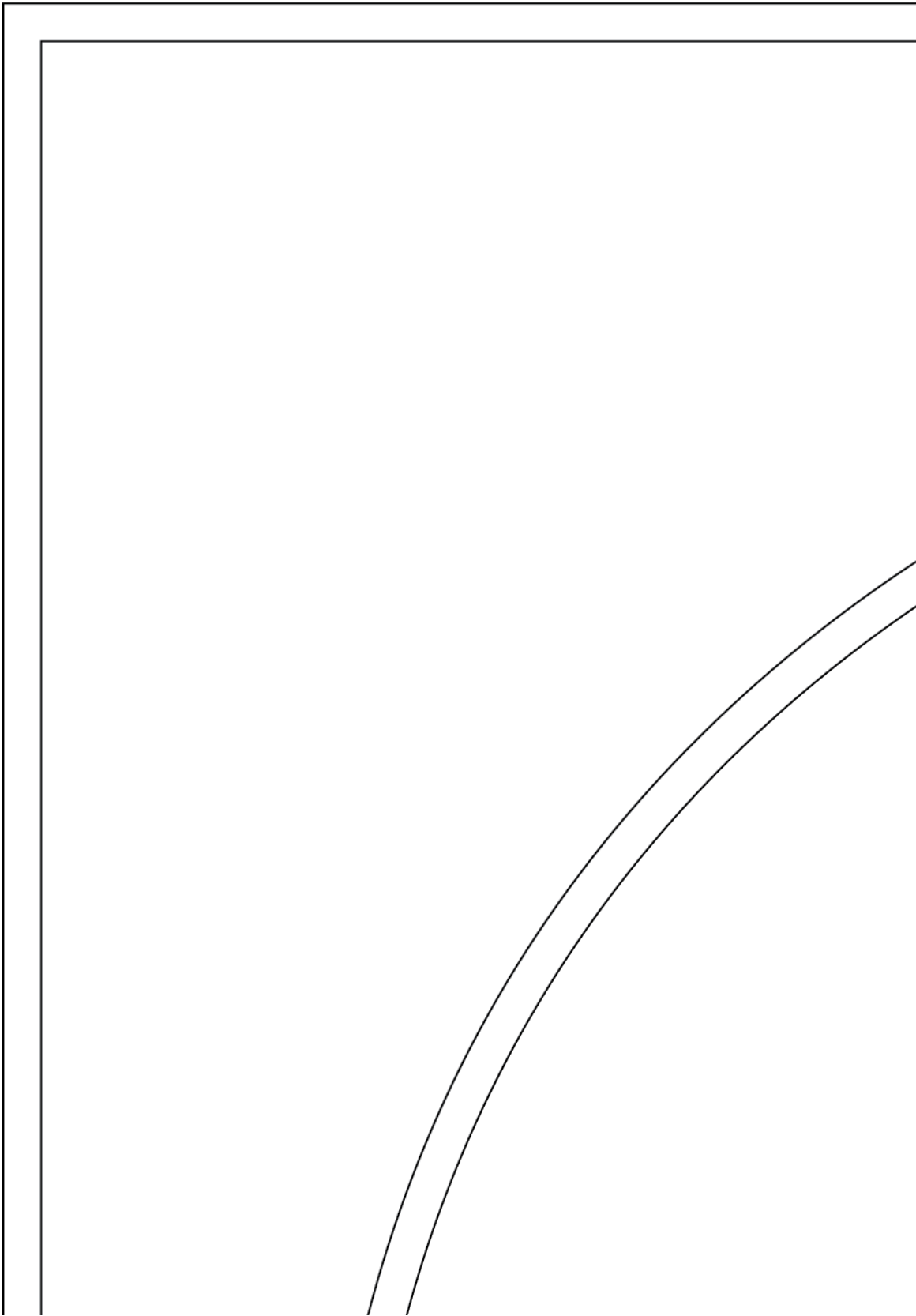
NOTE: While all possible care has been taken to ensure the accuracy of this pattern, We are not responsible for printing errors or the way in which individual work varies.

Please read instructions carefully before starting the construction of this quilt. If desired, wash and iron your fabrics before starting to cut.

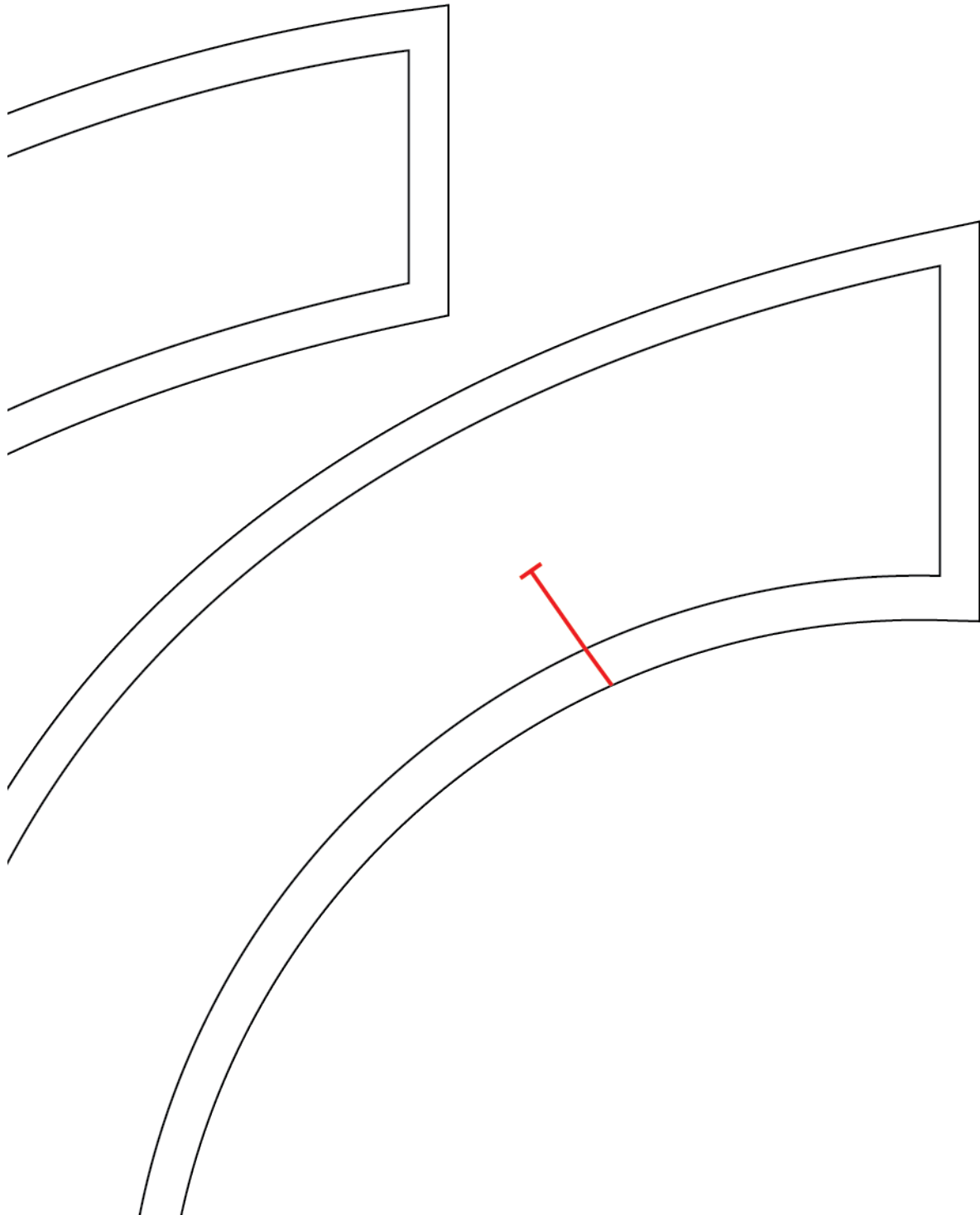




1"  
Square

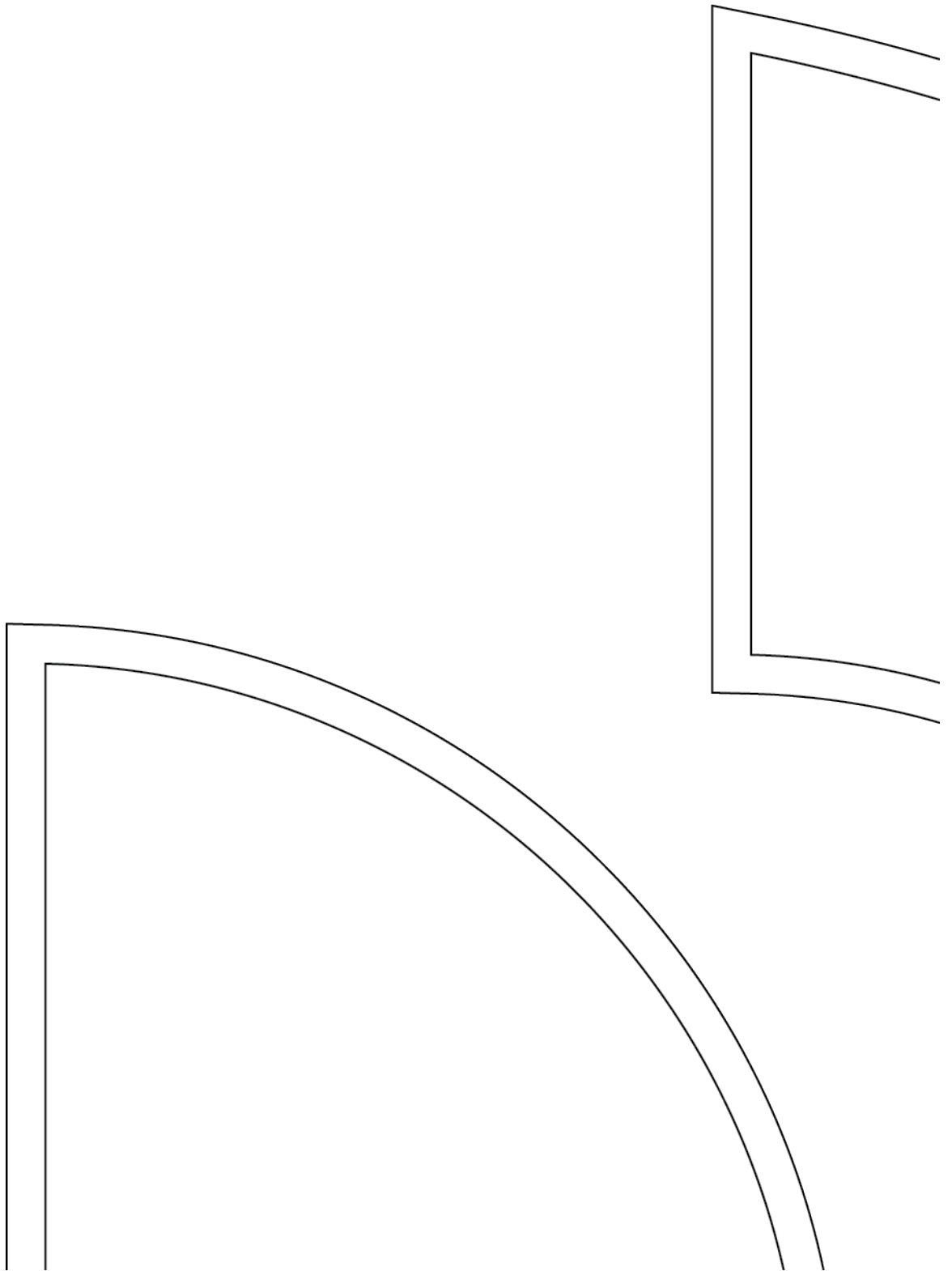


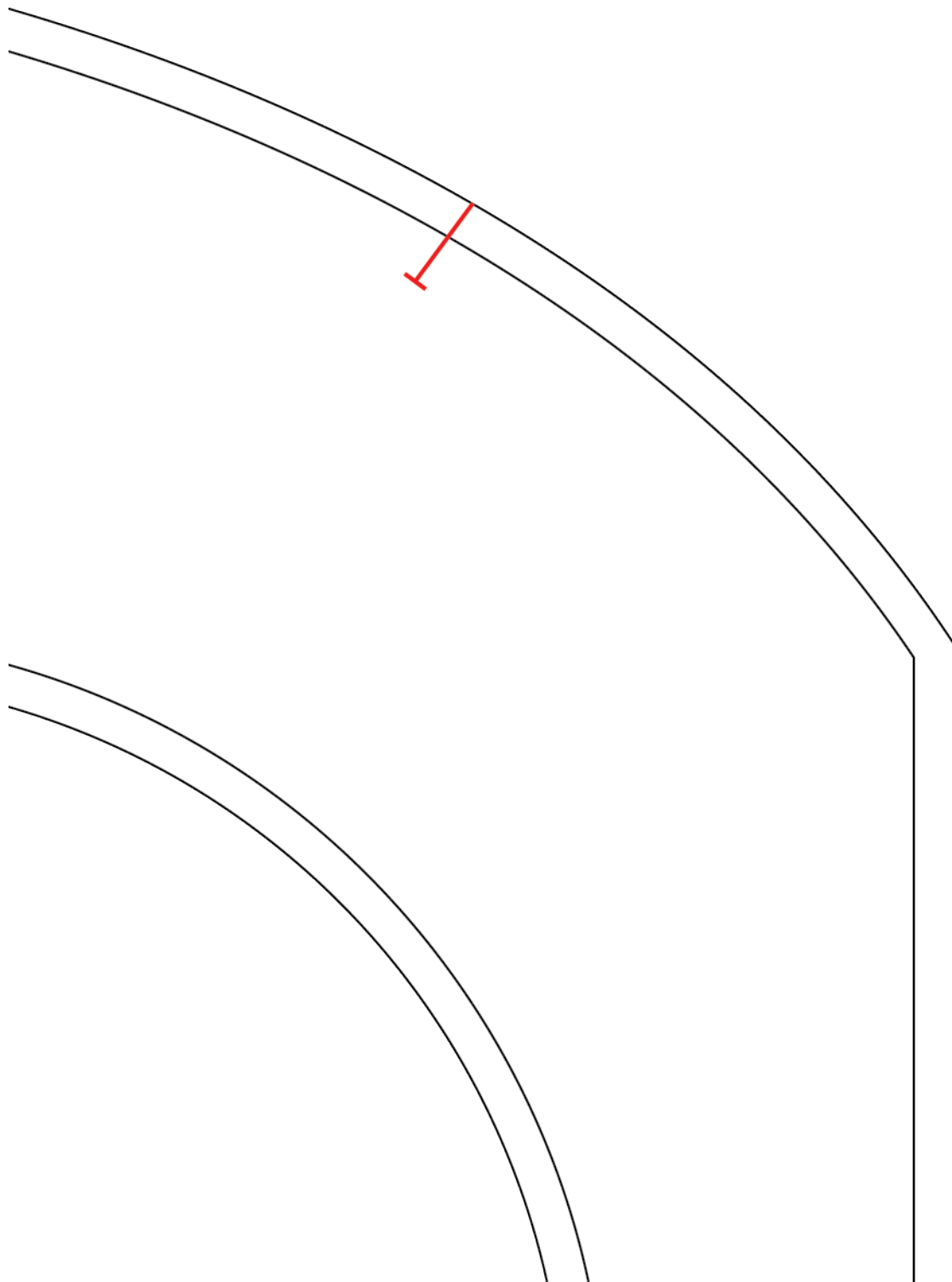




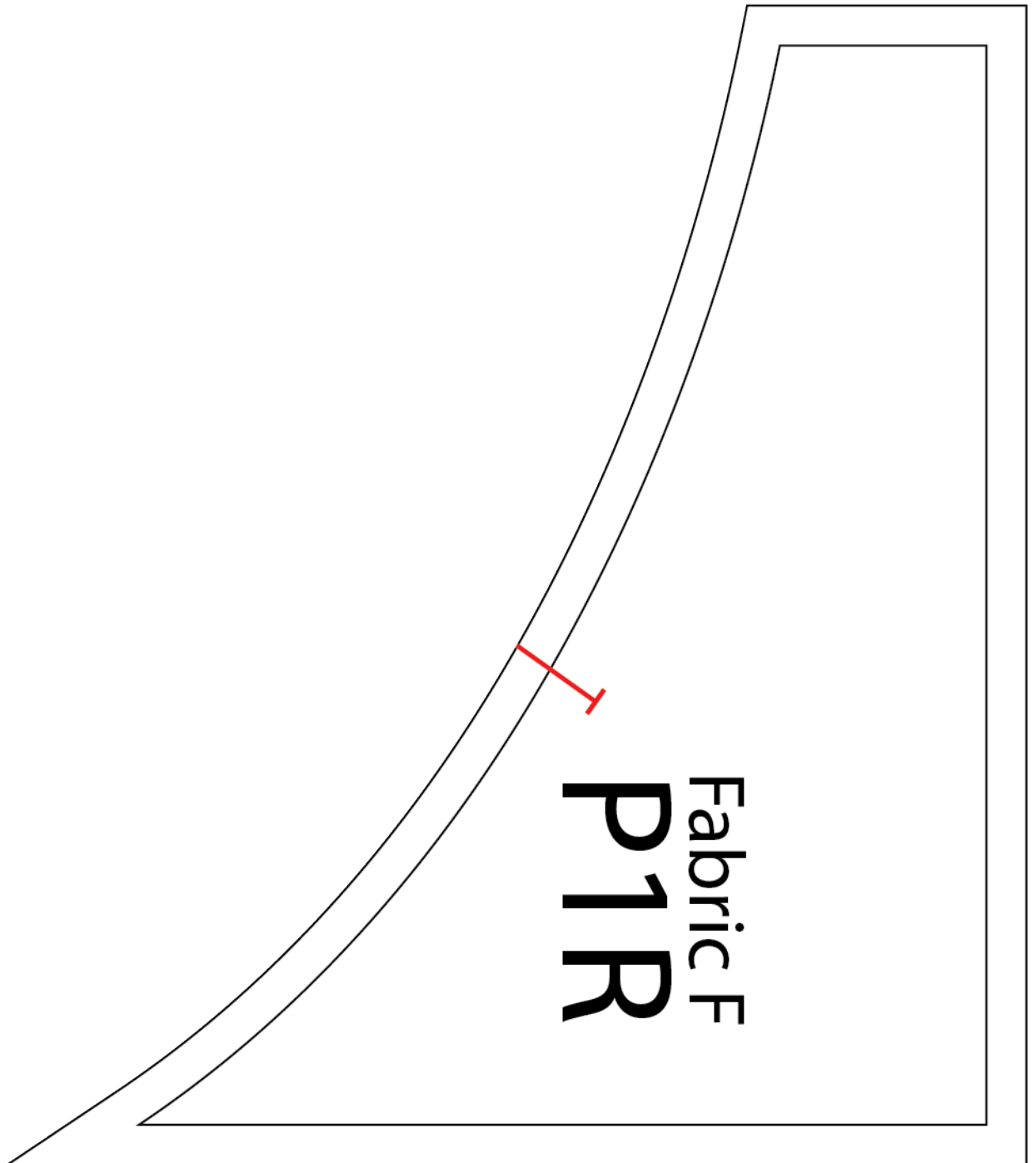




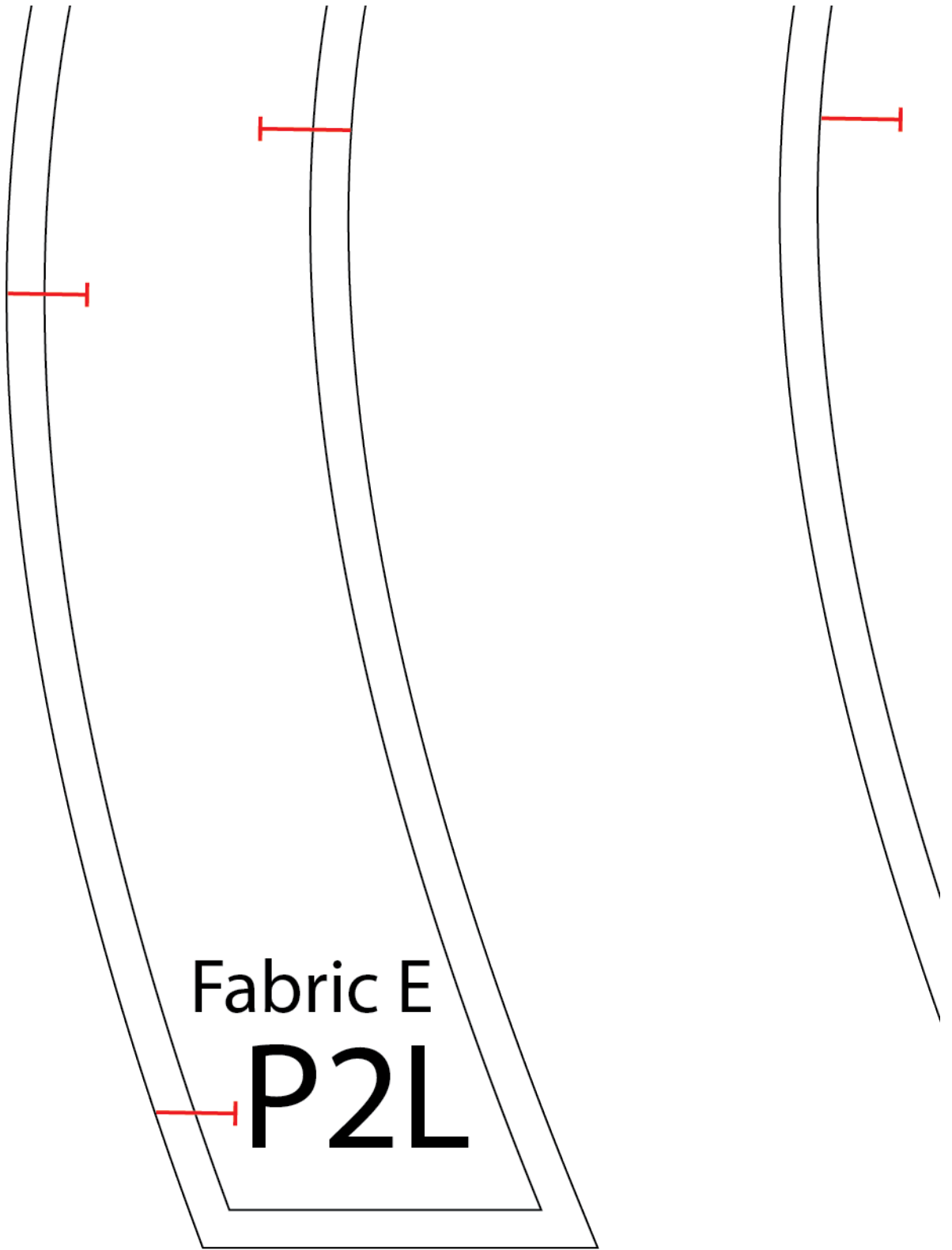






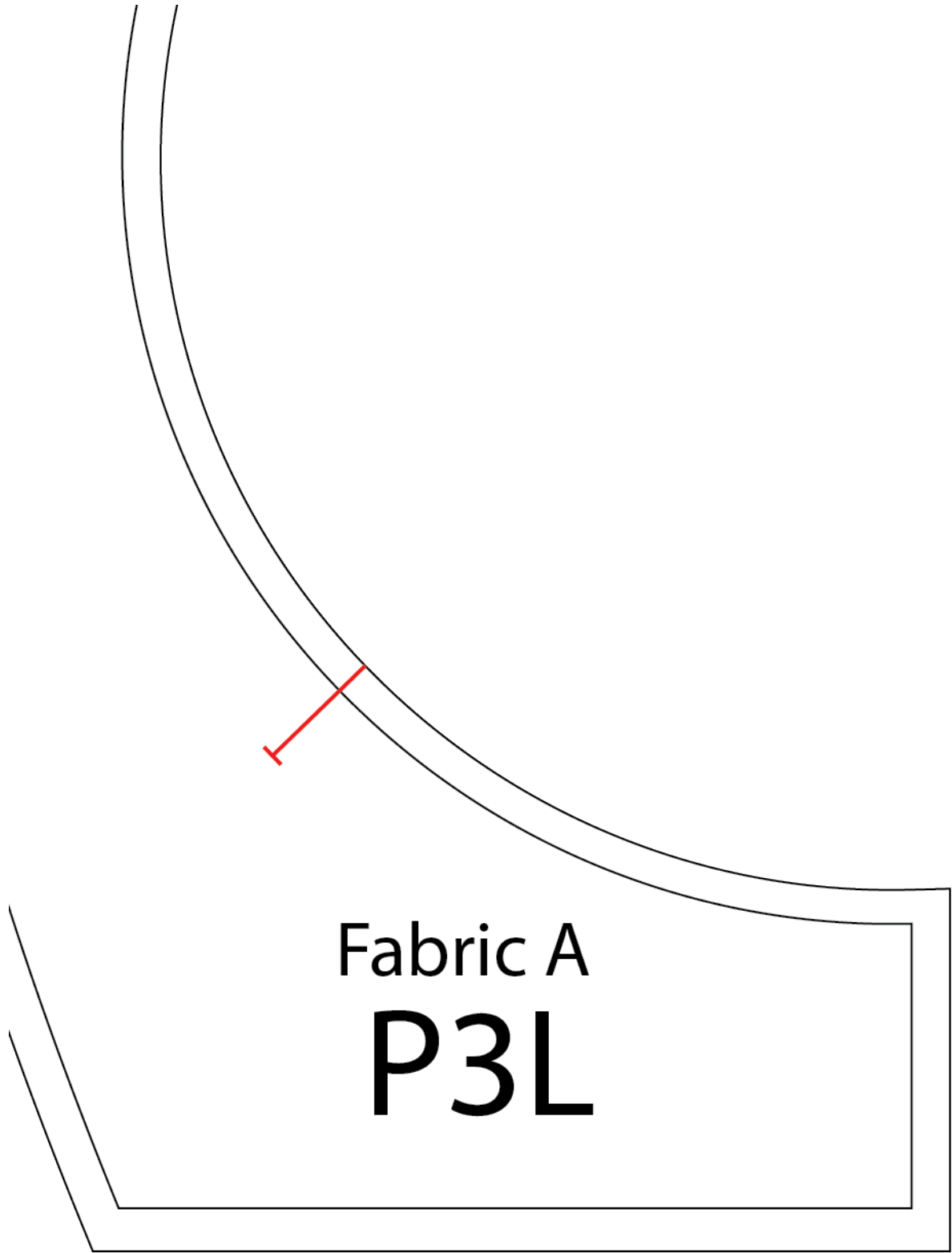






Fabric E  
**P2L**





Fabric B

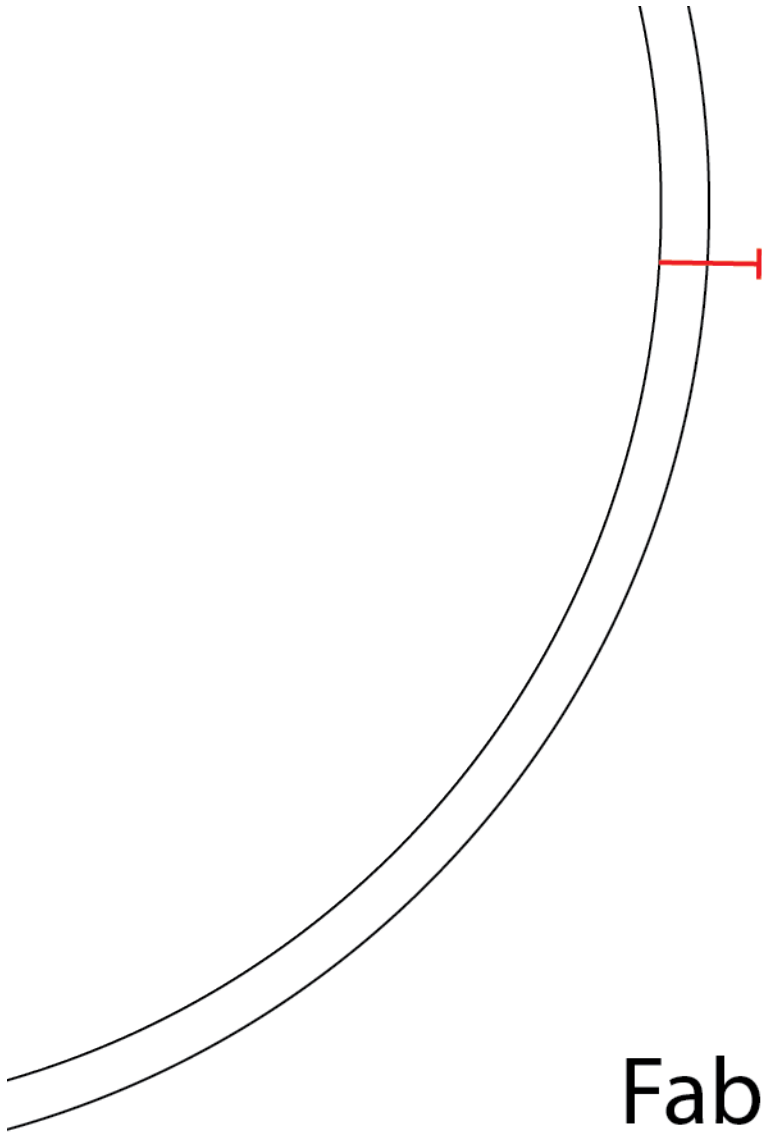
P4L



Fabric A  
P3R

Technical drawing of a curved fabric piece, labeled "Fabric A P3R". The drawing shows a large, curved section and a smaller, rectangular section. Red dimension lines are present, indicating measurements. The large curved section has a red dimension line on the left side and another on the right side. The smaller rectangular section has a red dimension line on the right side.





# Fabric B

# P2R