



# MAGNOLIA



FUSIONS

by AGF

FREE PATTERN

XXXXXXXXXXXXXXXXXXXXXXXXXXXX



# MAGNOLIA

QUILT DESIGNED BY AGFstudio

Silkroad FUSION

FABRICS DESIGNED BY AGF STUDIO



FUS-SR-1702  
SOULMATE BLOOMS SILKROAD



FUS-SR-1706  
MAGNOLIA STUDY SILKROAD



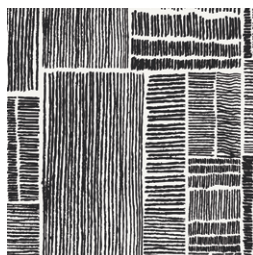
FUS-SR-1705  
VINE SILKROAD



FUS-SR-1700  
AQUARELLA SILKROAD



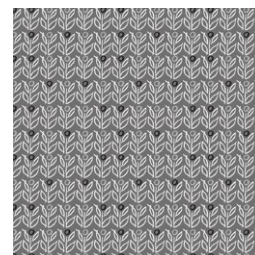
FUS-SR-1704  
MIXED EMOTIONS SILKROAD



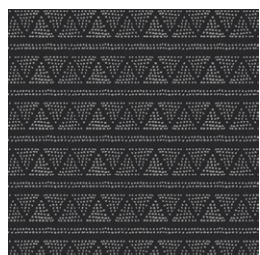
FUS-SR-1707  
LABYRINTH IMPRESSION SILKROAD



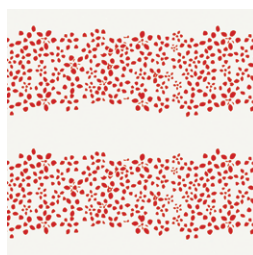
FUS-SR-1708  
MILLEFIORI SILKROAD



FUS-SR-1703  
WALLFLOWER SILKROAD



FUS-SR-1701  
PLOTTED FARM SILKROAD



FUS-SR-1709  
A PATH OF SILKROAD





FINISHED SIZE | 42" x 48"

## FABRIC REQUIREMENTS

Fabric <b>A</b> FUS-SR-1707	$\frac{3}{8}$ yd.
Fabric <b>B</b> FUS-SR-1708	$\frac{1}{6}$ yd.
Fabric <b>C</b> FUS-SR-1706	$\frac{1}{4}$ yd.
Fabric <b>D</b> FUS-SR-1704	$\frac{1}{6}$ Yd
Fabric <b>E</b> FUS-SR-1700	$\frac{3}{8}$ Yd
Fabric <b>F</b> FUS-SR-1701	$\frac{1}{4}$ Yd
Fabric <b>G</b> FE-530	$\frac{1}{4}$ Yd
Fabric <b>H</b> FE-535	$\frac{1}{4}$ Yd
Fabric <b>I</b> PE-413	$1\frac{5}{8}$ Yd

### BACKING FABRIC

FUS-SR-1707 1  $\frac{1}{2}$  yds (*Suggested*)

### BINDING FABRIC

Fabric **I** PE-413 (*Included*)

## CUTTING DIRECTIONS

*$\frac{1}{4}$ " seam allowances are included.  
WOF means width of fabric.*

### Fabric A

- Four (4) Squares of  $3\frac{1}{2} \times 3\frac{1}{2}$
- Twenty Two (22) Squares of  $3\frac{7}{8} \times 3\frac{7}{8}$
- Two Rectangles of  $6\frac{1}{2} \times 3\frac{1}{2}$

### Fabric B

- Seven (7) Squares of  $3\frac{7}{8} \times 3\frac{7}{8}$
- One (1) Rectangles of  $6\frac{1}{2} \times 3\frac{1}{2}$

### Fabric C

- Four (4) Squares of  $3\frac{1}{2} \times 3\frac{1}{2}$
- Ten (10) Squares of  $3\frac{7}{8} \times 3\frac{7}{8}$
- One (1) Rectangles of  $6\frac{1}{2} \times 3\frac{1}{2}$

### Fabric D

- Four(4) Squares of  $3\frac{7}{8} \times 3\frac{7}{8}$

### Fabric E

- Four (4) Squares of  $3\frac{1}{2} \times 3\frac{1}{2}$
- Twenty Two (22) Squares of  $3\frac{7}{8} \times 3\frac{7}{8}$
- Two (2) Rectangles of  $6\frac{1}{2} \times 3\frac{1}{2}$

### Fabric F

- Two (2) Squares of  $3\frac{1}{2} \times 3\frac{1}{2}$
- Eight (8) Squares of  $3\frac{7}{8} \times 3\frac{7}{8}$
- One (1) Rectangles of  $6\frac{1}{2} \times 3\frac{1}{2}$

### Fabric G

- Nine (9) Squares of  $3\frac{7}{8} \times 3\frac{7}{8}$
- One (1) Rectangles of  $6\frac{1}{2} \times 3\frac{1}{2}$

### Fabric H

- Fourteen (14) Squares of  $3\frac{7}{8} \times 3\frac{7}{8}$
- One (1) Rectangles of  $6\frac{1}{2} \times 3\frac{1}{2}$

### Fabric I

- Eight (8) Squares of  $3\frac{1}{2} \times 3\frac{1}{2}$
- Seventy Two (72) Squares of  $3\frac{7}{8} \times 3\frac{7}{8}$
- Three(3) Rectangles of  $6\frac{1}{2} \times 3\frac{1}{2}$
- Two (2) Stripes of  $12\frac{1}{2} \times 3\frac{1}{2}$
- Two (2) Stripes of  $24\frac{1}{2} \times 3\frac{1}{2}$
- Two (Stripes of WOF X  $3\frac{1}{2}$



# CONSTRUCTION

*Sew all rights sides together with 1/4" seam allowance.*

This Wall Art is made out of Flying Geese and HST(Half Square Triangles)

- We will start by building (8) different HST combinations.
- z

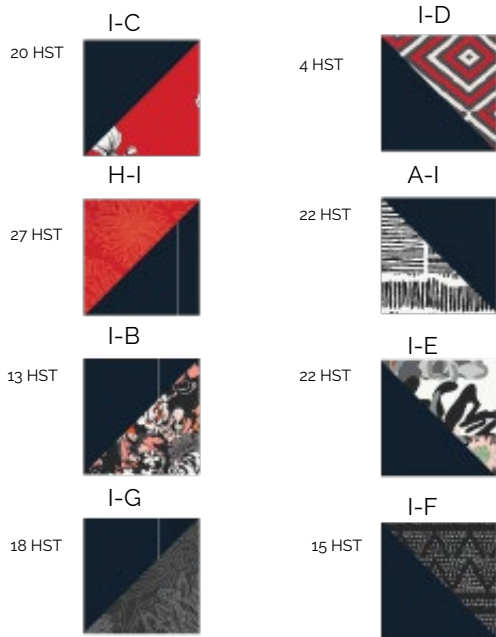


DIAGRAM 1

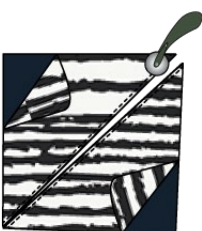
## HST Construction



Place the two squares right side together and mark a diagonal line on the wrong side of each square



Sew a 1/4 on both sides of the marked diagonal line



Using a rotary blade cut the square into two triangles

DIAGRAM 2

- Flying Geese:

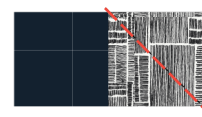
We will have ten (10) different combinations( See diagram below) notice that the numbers right next to each F.G means how many you have to make



DIAGRAM 3

## Flying Geese Construction:

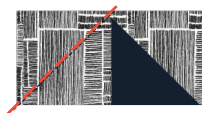
- Take a rectangle from B and two (2) squares of 3 1/2 x 3 1/2 from fabric A (Repeat the same step until you get all combinations showed on diagram 3.



Grab one square and place it to right side of the rectangle



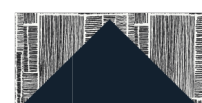
Cut it leaving 1/4 space from the seam



Take the other square and place it to the left side of the rectangle and sew



Cut leaving 1/4 space from the seam



Press

DIAGRAM 4

- Diagram illustrating the relationship between two triangles and their corresponding rectangles:
- Top row: A rectangle with dimensions  $12.5 \times 3.5$  is transformed (indicated by a red arrow) into a triangle with a floral pattern, which is then transformed (indicated by a red arrow) into a rectangle with dimensions  $24.5 \times 3.5$ .
- Bottom row: A rectangle with dimensions  $12.5 \times 3.5$  is transformed (indicated by a red arrow) into a triangle with a floral pattern, which is then transformed (indicated by a red arrow) into a rectangle with dimensions  $24.5 \times 3.5$ .

- Follow Diagram below for row arrangement, notice that the fourth column are Flying Geese, and starting the fifth column you will arrange HST again





Now sew Rows following diagram below.

Row 1



Row 2



Row 3



Row 4



Row 5



Row 6



Row 7



Row 8



Now sew Rows following diagram below.

Row 9



Row 10



Row 11



Row 12



Row 13



Row 14



DIAGRAM 7

Attached the  $42\frac{1}{2} \times 3\frac{1}{2}$  stripes on each side of the block (See Diagram below for reference)

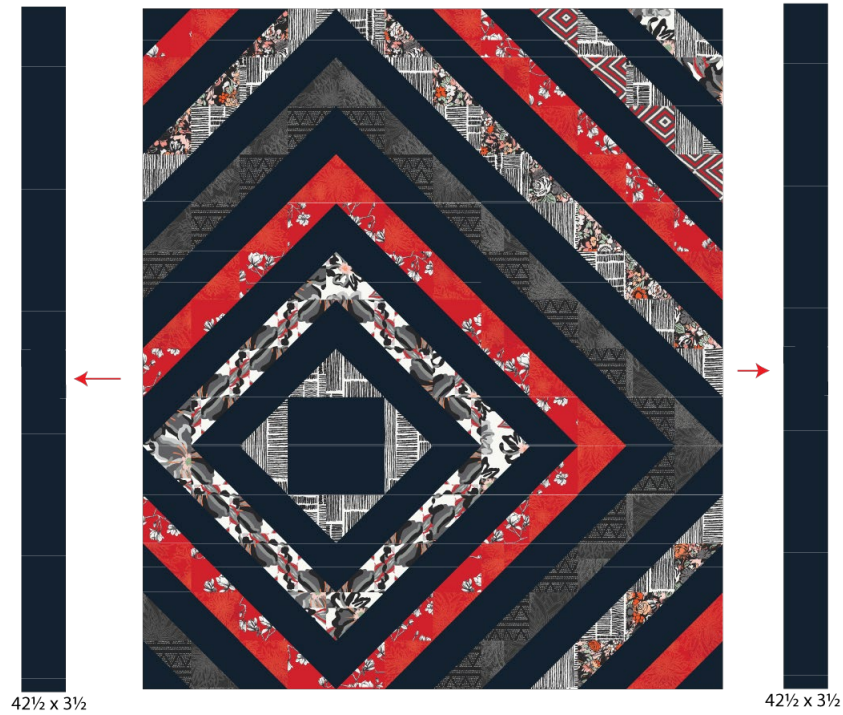


DIAGRAM 8

Sew the flying geese stripe we sew that we set aside at the beginning and sew one at the bottom and one at the top, See Diagram below.



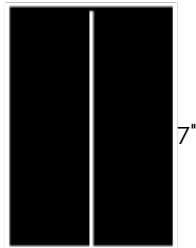
DIAGRAM 9



- Quilt as desired and sew a  $42\frac{1}{2} \times 48\frac{1}{2}$  fabric all around it, leaving a 3 " to 4 " opening, in order for you to turn it inside out
- Take some left over fabric I and cut three (3) small rectangles of 6" x 7" ,folded in half and sew at  $\frac{1}{4}$ inch , turn it inside out, folded again, and insert them in between the top and the backing, as shows on diagram below.

Folded in  
Half

6"



Sew

$\frac{1}{4}$ "



Fold



Insert between  
backing and top



Sew around it with top and  
Backing right side together  
Leaving a 3" to 4" opening to  
turn the wall art inside out.



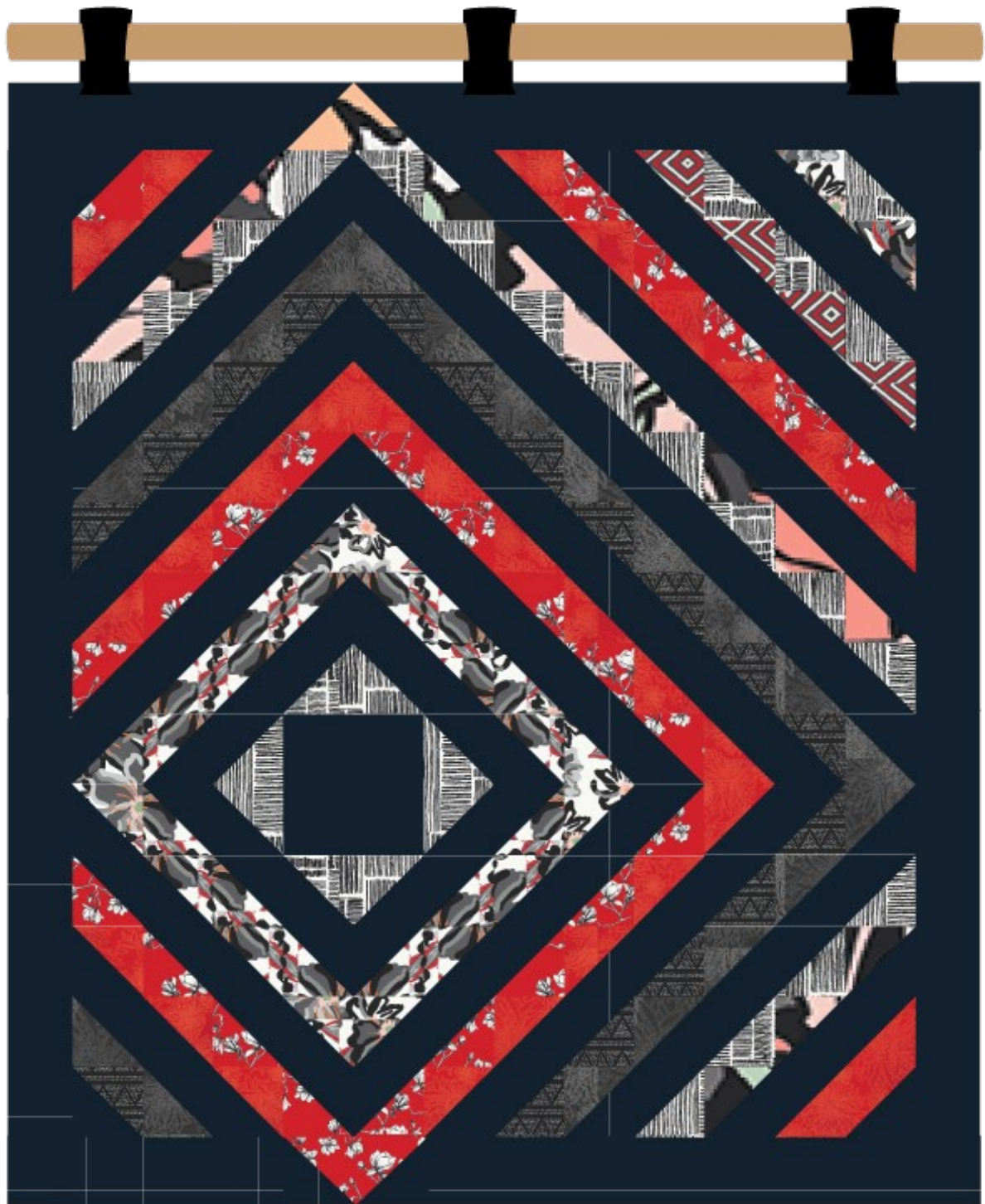


DIAGRAM 11

XXXXXXXXXXXXXXXXXXXXXXXXXXXX

*Congratulations*  
*& enjoy*

XXXXXXXXXXXXXXXXXXXXXXXXXXXX



FEEL THE DIFFERENCE

[artgalleryfabrics.com](http://artgalleryfabrics.com)

NOTE: While all possible care has been taken to ensure the accuracy of this pattern, We are not responsible for printing errors or the way in which individual work varies. Please read instructions carefully before starting the construction of this quilt. If desired, wash and iron your fabrics before starting to cut.

© 2018 Courtesy of Art Gallery Quilts LLC. All Rights Reserved.