

X  
X  
X  
X  
X  
X  
X  
X  
X  
X  
X  
X

[illegible]

by AGF

× × × × × × × × × × × × × × × × × ×



# Silkroad FUSION

FABRICS DESIGNED BY AGF STUDIO



FUS-SR-1702  
SOULMATE BLOOMS SILKROAD



FUS-SR-1706  
MAGNOLIA STUDY SILKROAD



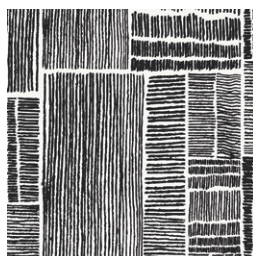
FUS-SR-1705  
VINE SILKROAD



FUS-SR-1700  
AQUARELLA SILKROAD



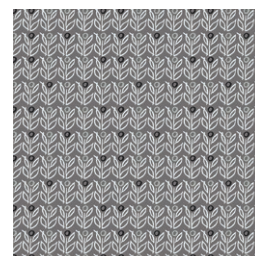
FUS-SR-1704  
MIXED EMOTIONS SILKROAD



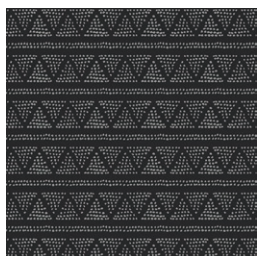
FUS-SR-1707  
LABYRINTH IMPRESSION SILKROAD



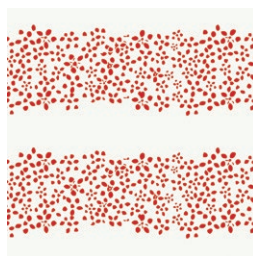
FUS-SR-1708  
MILLEFIORI SILKROAD



FUS-SR-1703  
WALLFLOWER SILKROAD



FUS-SR-1701  
PLOTTED FARM SILKROAD



FUS-SR-1709  
A PATH OF SILKROAD



PE-413  
CAVIAR



PE-433  
SNOW



FINISHED SIZE | 6" x 10"

## FABRIC REQUIREMENTS

Fabric **A** FUS-SR-1701  $\frac{1}{6}$  yd.

Fabric **B** FUS-SR-1705  $\frac{1}{4}$  yd.

Fabric **C** FUS-SR-1706  $\frac{1}{6}$  yd.

Fabric **D** PE-413  $\frac{1}{2}$  yd.

Fabric **E** PE-433  $\frac{1}{4}$  yd.

## CUTTING DIRECTIONS

*Sew at  $\frac{1}{4}$ " seam allowance unless noted otherwise.*

- Four (4) 2 1/2" square from Fabric **A**
- Two (2) Template 1 pieces from Fabric **A**
- Two (2) 7" squares from Fabric **B**
- Three (3) 4" square from Fabric **C** (To one of these, add Steam- A- Seam and cut in half, use in front and back clutch)
- Four (4) 7" x 12" rectangles from Fabric **D** (Exterior and Interior)
- One (1) 1 1/2" x WOF strip from Fabric **D** (Straps and Loops)
- One 1" x 20" strip from Fabric **D** (sew to one side of flap, trim and sew to the other side and trim excess)
- One (1) 7" square from Fabric **E** (cut in half and use in front flap)
- One (1) 2 1/2" square from Fabric **E** (Add Steam A- Seam, cut in half and use in front flap and back clutch)

## CONSTRUCTION

*Sew all rights sides together with  $\frac{1}{4}$ " seam allowance, unless noted otherwise.*

### Creating the Flap

- Take your 7" square from Fabric **E** and cut in half on the diagonal. You will only need one of these triangles.
- With Steam-A-Seam attached to your template pattern from Fabric **A**, press to the middle top of your triangle.
- Next take a 4" square from Fabric **C** and a 2 1/2" square from Fabric **E** and cut in half on the diagonal.
- Fuse pieces to your flap following the Diagram below. (Diagram 1)
- Stitch as close to the edge of each piece to secure to flap.

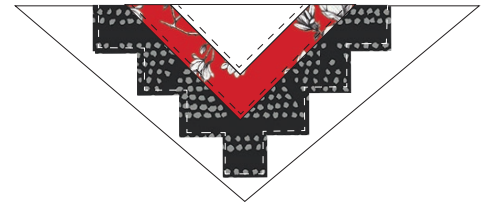


DIAGRAM 1

- Sew 1" strip to each side of your front flap and trim excess as you go. (Diagram 2)
- Once this piece is complete use it as a template to cut out your inner flap piece from Fabric **D**.
- Apply fusible fleece to the inner flap and it's time to attach your magnet closure.

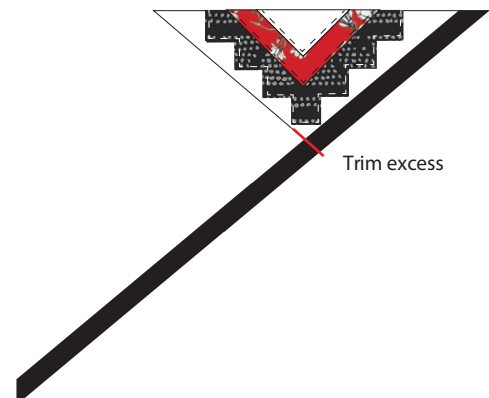


DIAGRAM 2

## Attaching the Magnet Snap

- **Note:** A magnetic snap has two main components, a male side & a female side. The magnetic snap also comes with a backing washer for each component. When you purchase a magnetic snap, you will receive 4 metal pieces in total.
- Find the midpoint of your inner flap and measure up  $1\frac{1}{2}$ " and place a small  $1 \times 2$ " piece of ultra firm stabilizer. Iron stabilizer into place. Mark the 1" mark on top of stabilizer.
- Place a washer on this mark. Mark with a pencil two lines, from top and bottom tracing inside the rectangles on the washer. (Diagram 3)

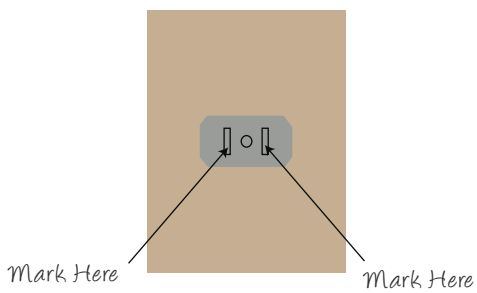


DIAGRAM 3

- Remove the washer and make two slits on those marks using a small pair of sharp scissors.
- Place the arms of the male magnet clasp through the slits from the right side of the strip.

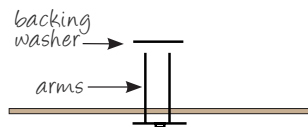


DIAGRAM 4

- Put the washer over the arms from the fusible side.
- Using pliers, fold each arm of the clasp out and down in opposite directions around the washer. Make the arms as flat as a possible.

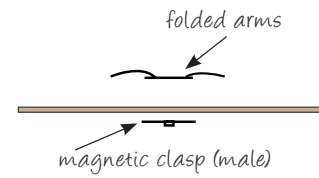


DIAGRAM 5

- To finish off your flap sew this piece right sides together to your exterior flap, leaving the top portion unsewn. (Diagram 6)
- Flip right side of flap out and topstitch  $\frac{1}{4}$ " around the edge of your flap.

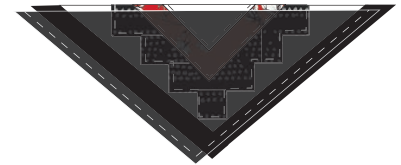


DIAGRAM 6

- Take your 7" x 12" front clutch from Fabric **D** and two  $2\frac{1}{2}$ " squares from Fabric **A**. Draw diagonal lines on the wrong side of the fabric from corner to corner.
- Place right sides together to the bottom corner of your piece and sew on the line your drew. Trim excess fabric to  $\frac{1}{4}$ " and press corners out. Fuse fusible fleece to this piece.



DIAGRAM 7

- To attach the female side of the magnetic snap repeat the same process following Diagram 3-5 with the female magnetic snap and attach to your front clutch.

Find midpoint  
and line up snaps

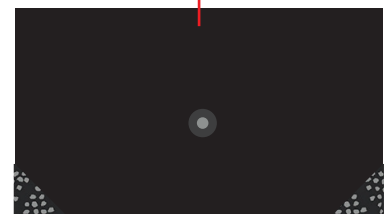


DIAGRAM 8



## Creating Back Clutch

- Like the flap fuse the three pieces to your back clutch as follows.

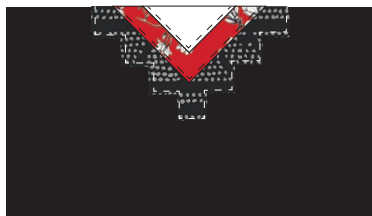


DIAGRAM 9

- On all your remaining 7', 4' and 2 1/2' pieces draw a diagonal line with a fabric marking pen on the wrong side of the fabric.
- Place a 7" square from Fabric **B** to one bottom corner of your piece. Stitch on the line you drew and trim seam allowance to 1/4". Layer your 4" square from Fabric **C** to the same corner and repeat the same process. Do this one more time with your 2 1/2" square from Fabric **A** to the same corner.
- Repeat this process to the other side of your back clutch with your remaining pieces. (Diagram 10)
- Apply fusible fleece to 7' x 12" exterior back piece. Quilt your pieces as desired.

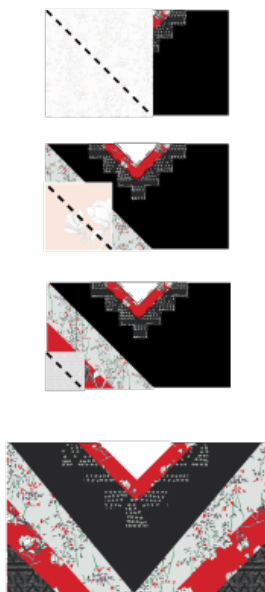


DIAGRAM 10

## Strap and Final Assembly

- To create your straps and loops. Take your 1 1/2' x WOF and fold raw edges into the middle of your strip and press. Then fold in half and press again.
- Topstitch on both edges of your straps at about 1/8".
- Cut two loops from your long strap about 1 1/2'. Fold in half and thread through a small metal ring and stitch ends to secure.
- Place both loops with rings attached about 1' down from the top of your front clutch. Tack into place on the edge of your piece. (Diagram 11)
- Attach your flap right sides together to your back clutch. (Diagram 12)

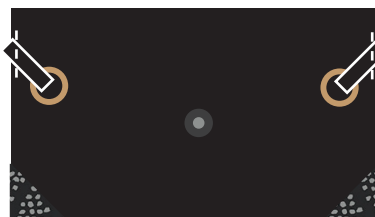


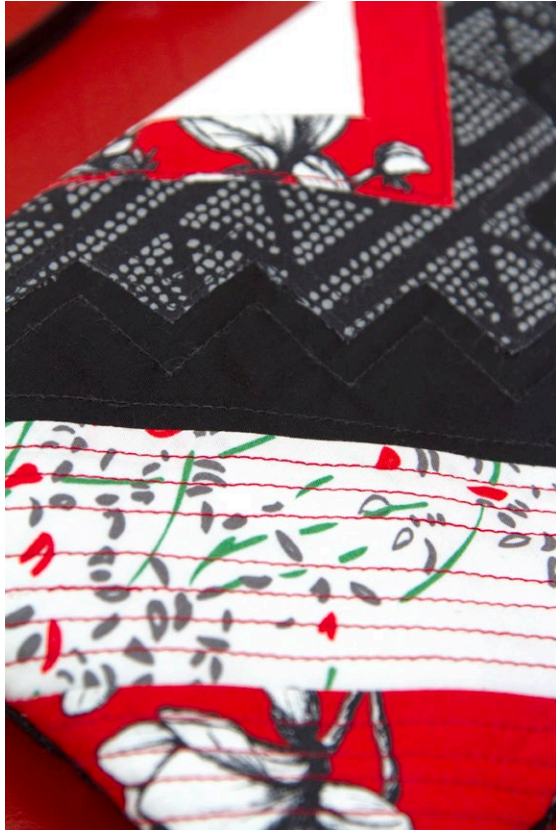
DIAGRAM 11



DIAGRAM 12

- Sew your 7" x 12" lining pieces together and sew your outer clutch pieces together at 1/2". Leave a small unsewn portion in the lining to flip right side of bag through.
- Tuck your outer clutch into your lining piece with right sides touching, sew around the bag at 1/2".
- Flip your bag through the unsewn portion in the lining and give your bag a good press.
- Thread your long strap through your metal rings and tack down raw edges to fix into place.

XXXXXXXXXXXXXXXXXXXXXXXXXXXX



XXXXXXXXXXXXXXXXXXXXXXXXXXXX

Congratulations  
& enjoy

XXXXXXXXXXXXXXXXXXXXXXXXXXXX



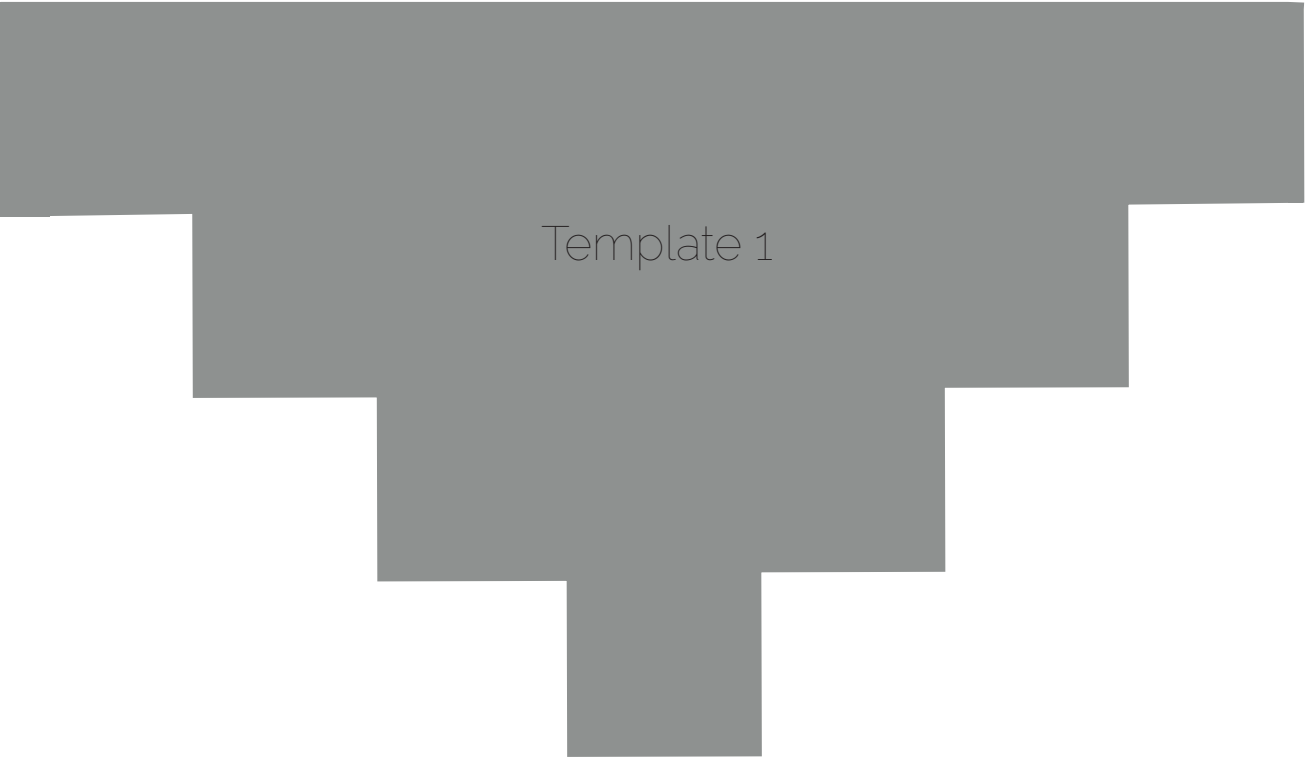
FEEL THE DIFFERENCE

[artgalleryfabrics.com](http://artgalleryfabrics.com)

*NOTE: While all possible care has been taken to ensure the accuracy of this pattern, We are not responsible for printing errors or the way in which individual work varies. Please read instructions carefully before starting the construction of this quilt. If desired, wash and iron your fabrics before starting to cut.*

© 2018 Courtesy of Art Gallery Quilts LLC. All Rights Reserved.

CLUTCH TEMPLATE



Cut out template from Fabric A and  
add Steam -A-Seam to template