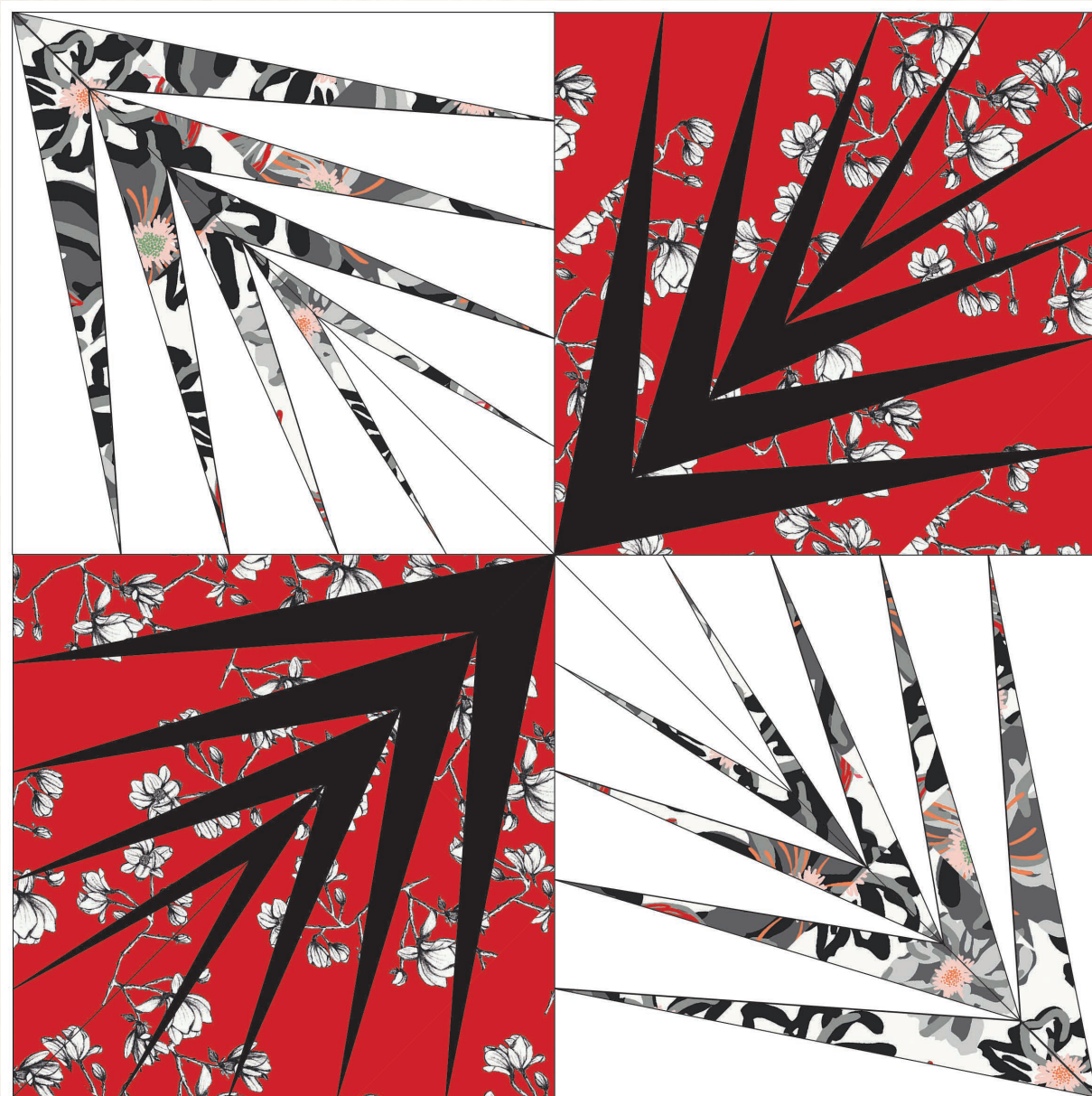


XXXXXX

Branches



FUSIONS

by AC

by AGF

FREE PATTERN

XXXXXXXXXXXXXXXXXXXXXXXXXXXX

Branches

DESIGNED BY AGFstudio

Silkroad FUSION

FABRICS DESIGNED BY AGF STUDIO



FUS-SR-1702
SOULMATE BLOOMS SILKROAD



FUS-SR-1706
MAGNOLIA STUDY SILKROAD



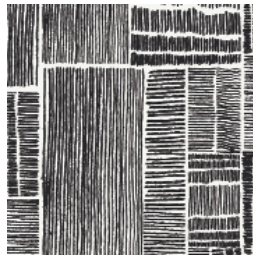
FUS-SR-1705
VINE SILKROAD



FUS-SR-1700
AQUARELLA SILKROAD



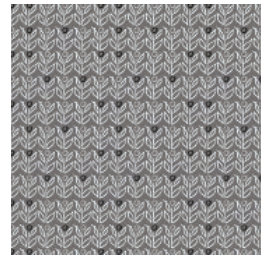
FUS-SR-1704
MIXED EMOTIONS SILKROAD



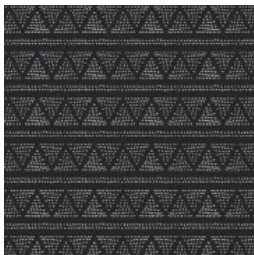
FUS-SR-1707
LABYRINTH IMPRESSION SILKROAD



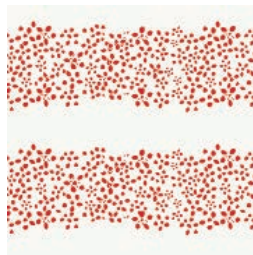
FUS-SR-1708
MILLEFIORI SILKROAD



FUS-SR-1703
WALLFLOWER SILKROAD



FUS-SR-1701
PLOTTED FARM SILKROAD



FUS-SR-1709
A PATH OF





FINISHED SIZE | 24" x 24"

FABRIC REQUIREMENTS

Fabric **A** FUS-SR-1706 ½ yd.

Fabric **B** FUS-SR-1700 ½ yd.

Fabric **C** PE-413 1 yd.

Fabric **D** PE-433 ½ yd.

BACK PILLOW FABRIC

PE-413 Fabric **C** (Included)

CUTTING DIRECTIONS

¼" seam allowances are included.
WOF means width of fabric.

- Two (2) 25" x 16" rectangles from fabric **C** for the back of the pillow.
- The rest of the fabric will be used to do paper piecing using template a and template b.

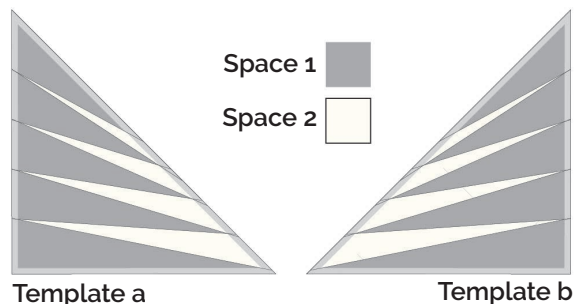
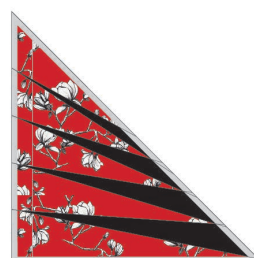


DIAGRAM 1

CONSTRUCTION

Sew all right sides together with ¼" seam allowance.

- Cut four (4) template a and template b.
- Take two (2) template a and b for fabrics **A** and **C**.
- Fabric **A** will be in space 1
- Fabric **C** will be in space 2
- Take two (2) template a and b for fabrics **B** and **D**.
- Fabric **D** will be in space 1
- Fabric **B** will be in space 2



Template a x 2



Template b x 2



Template a x 2



Template b x 2

- Place the paper facing you so you can see where you are going to sew.
- Start by placing the fabric from space 1 with the wrong side facing the wrong side of the paper.
- Place the fabric from space 2 with the wrong side facing the right side from the fabric in space 1.
- Stitch through the paper and the two layers of fabric.
- Trim the excess from fabric in space 1.
- Keep on doing it until you have covered all your template.

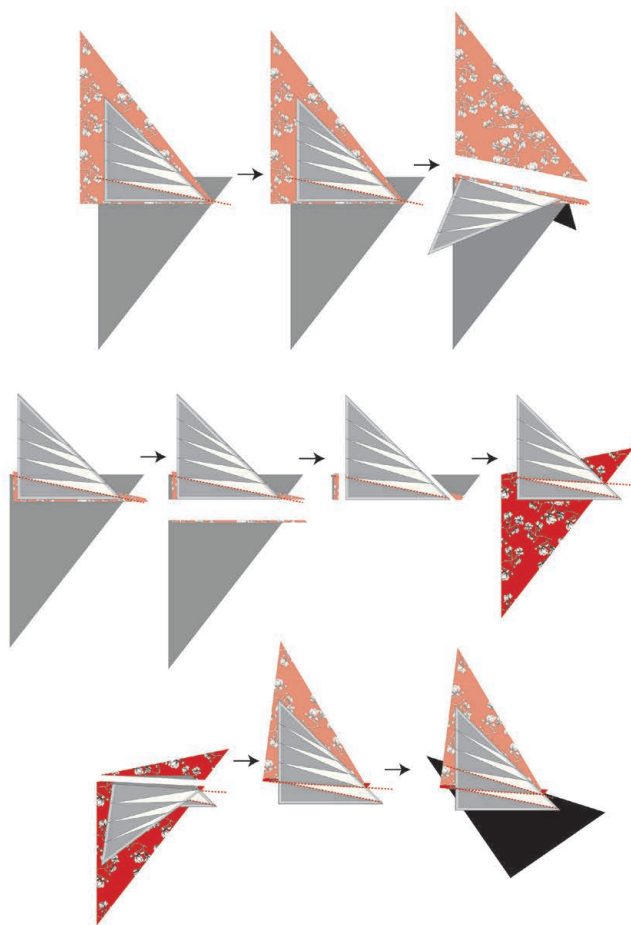


DIAGRAM 2

- Trim your final piece so you only have your template.
- Do not remove the paper yet.
- Join each template a to its corresponding template b:

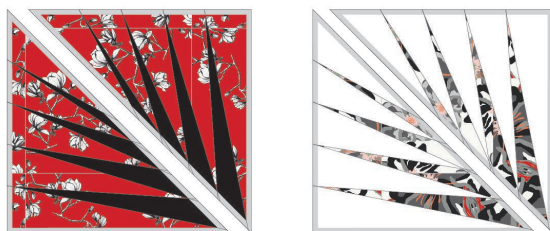


DIAGRAM 3

- Join the resulting blocks following Diagram 4.

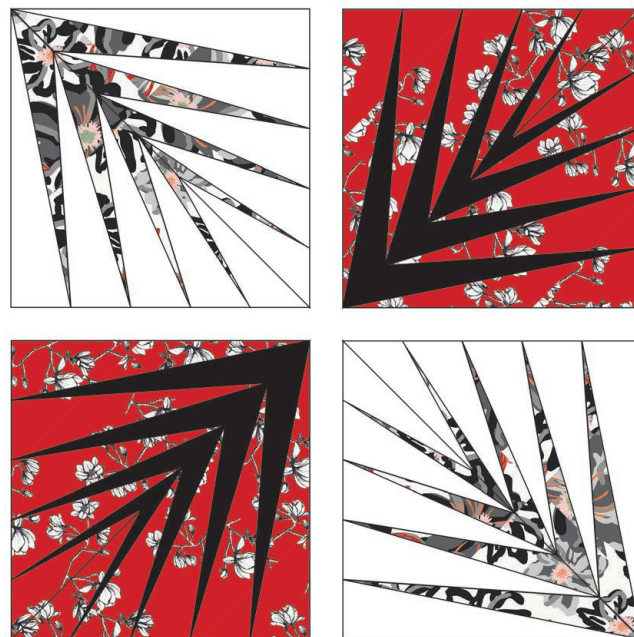


DIAGRAM 4

QUILT ASSEMBLY

Sew rights sides together.

- Place BACKING FABRIC on a large surface wrong side up. Stretch it with masking tape against that surface.
- Place BATTING on top of backing fabric.
- Place TOP on top of the batting with right side facing up. Smooth away wrinkles using your hands.
- Pin all layers together and baste with basting thread, using long stitches. You can also use safety pins to join the layers.
- Machine or hand quilt starting at the center and working towards the corners. Remember that quilting motifs are a matter of personal preference. Have fun choosing yours!
- After you finished, trim excess of any fabric or batting, squaring the quilt to proceed to bind it.

BACK PILLOW

Sew rights sides together.

- Take two (2) 25" x 16" rectangles from fabric **C**.
- Finish one 25" edge on each rectangle by folding the edge $\frac{1}{4}$ " twice and then edge-stitching.
- Pin both rectangles to the right side of the pillow top in a way that they overlap in the center of the pillow.
- Stitch all around at $\frac{1}{4}$ ".

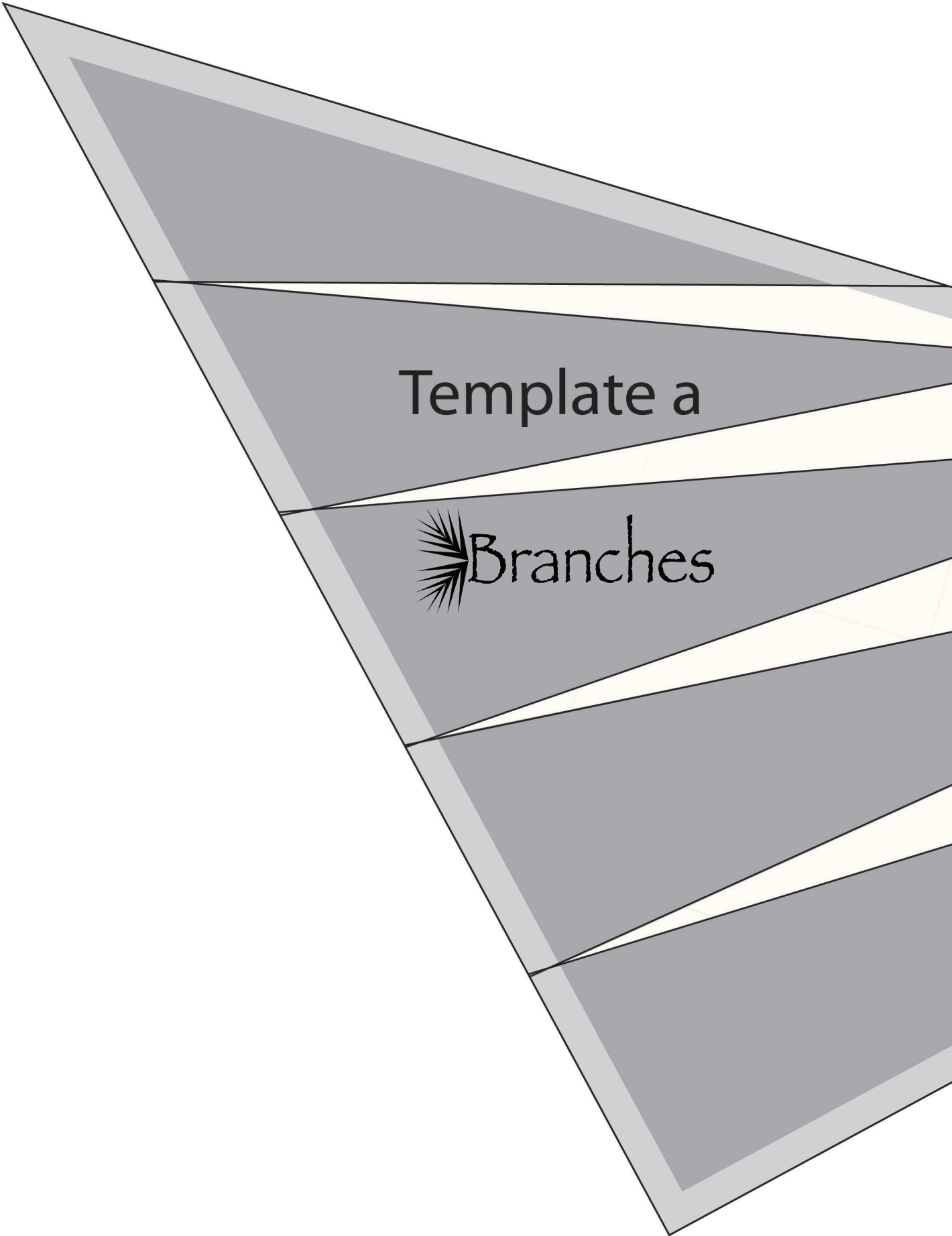


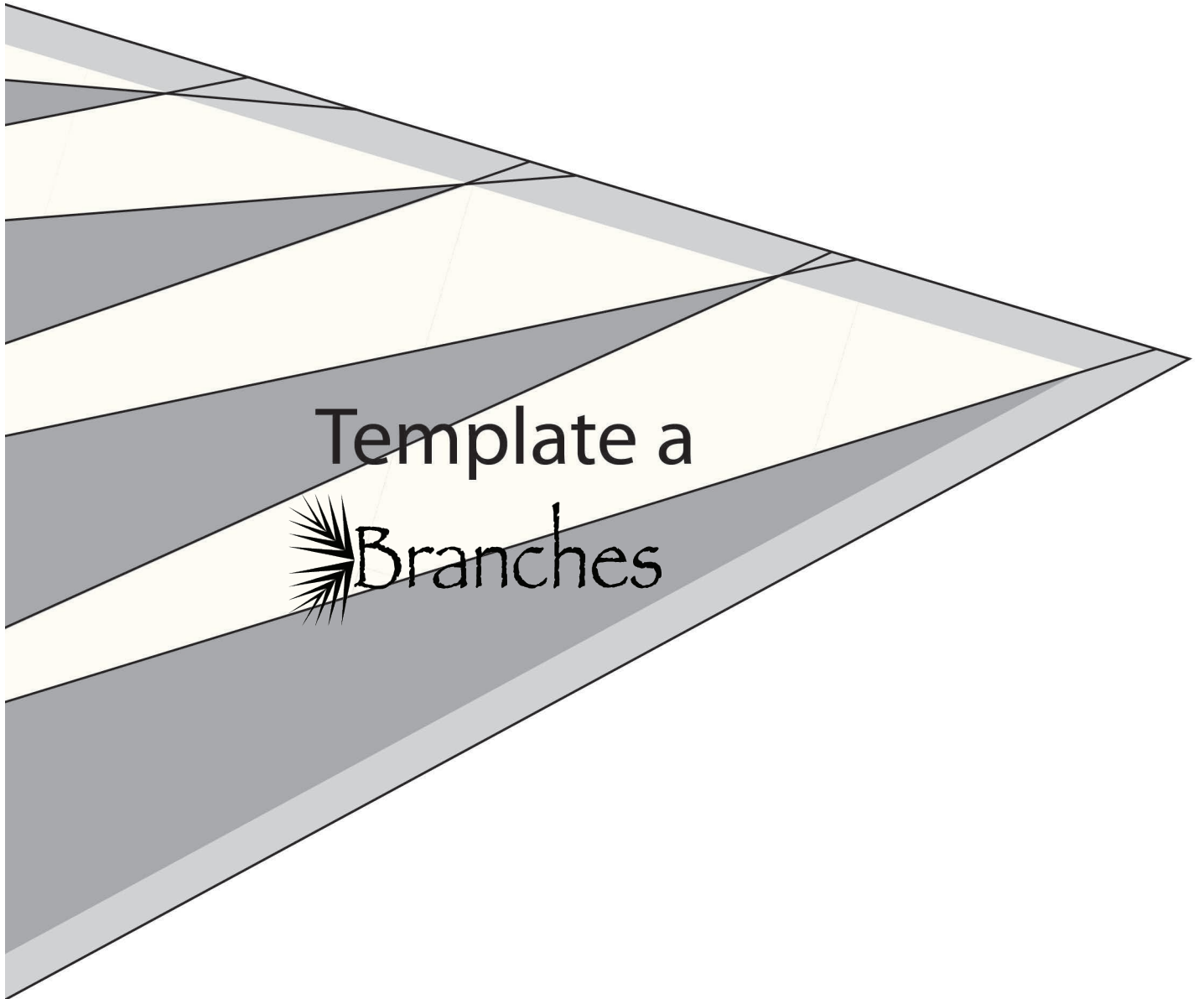
FEEL THE DIFFERENCE

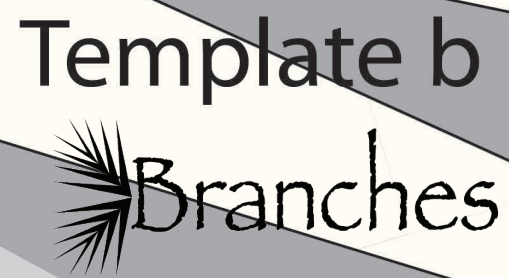
artgalleryfabrics.com

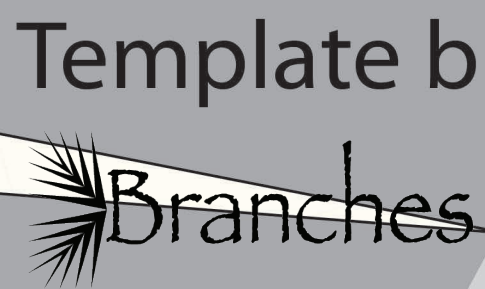
NOTE: While all possible care has been taken to ensure the accuracy of this pattern, We are not responsible for printing errors or the way in which individual work varies. Please read instructions carefully before starting the construction of this quilt. If desired, wash and iron your fabrics before starting to cut.

© 2018 Courtesy of Art Gallery Quilts LLC. All Rights Reserved.

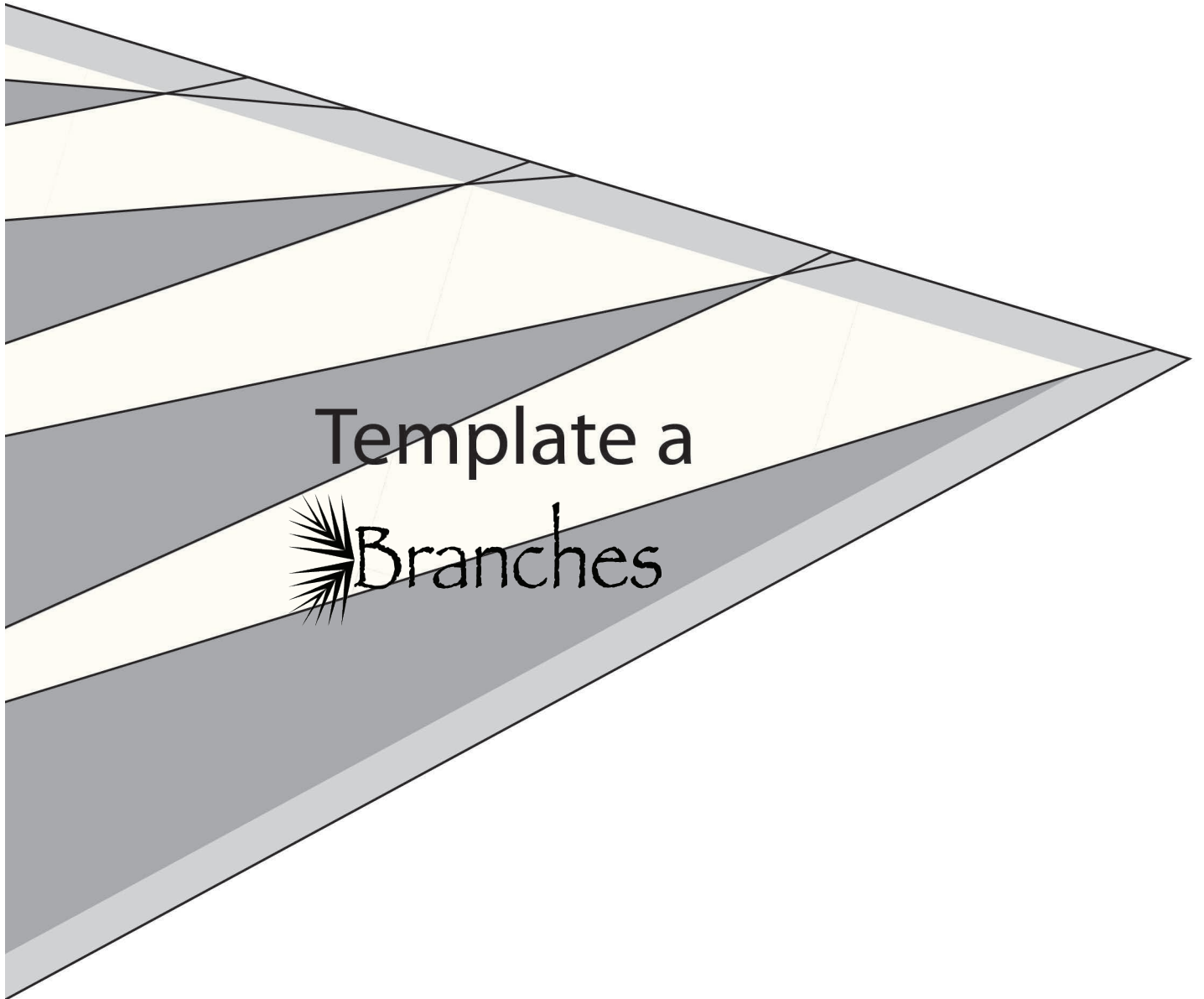


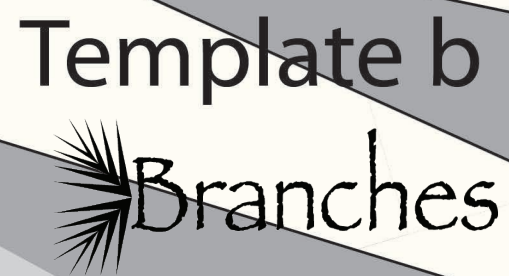


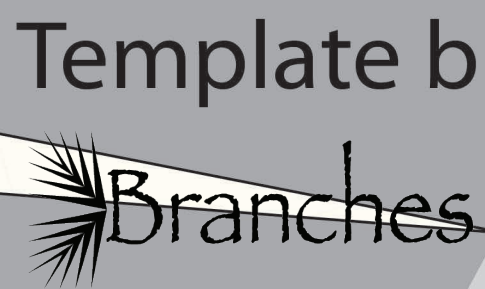


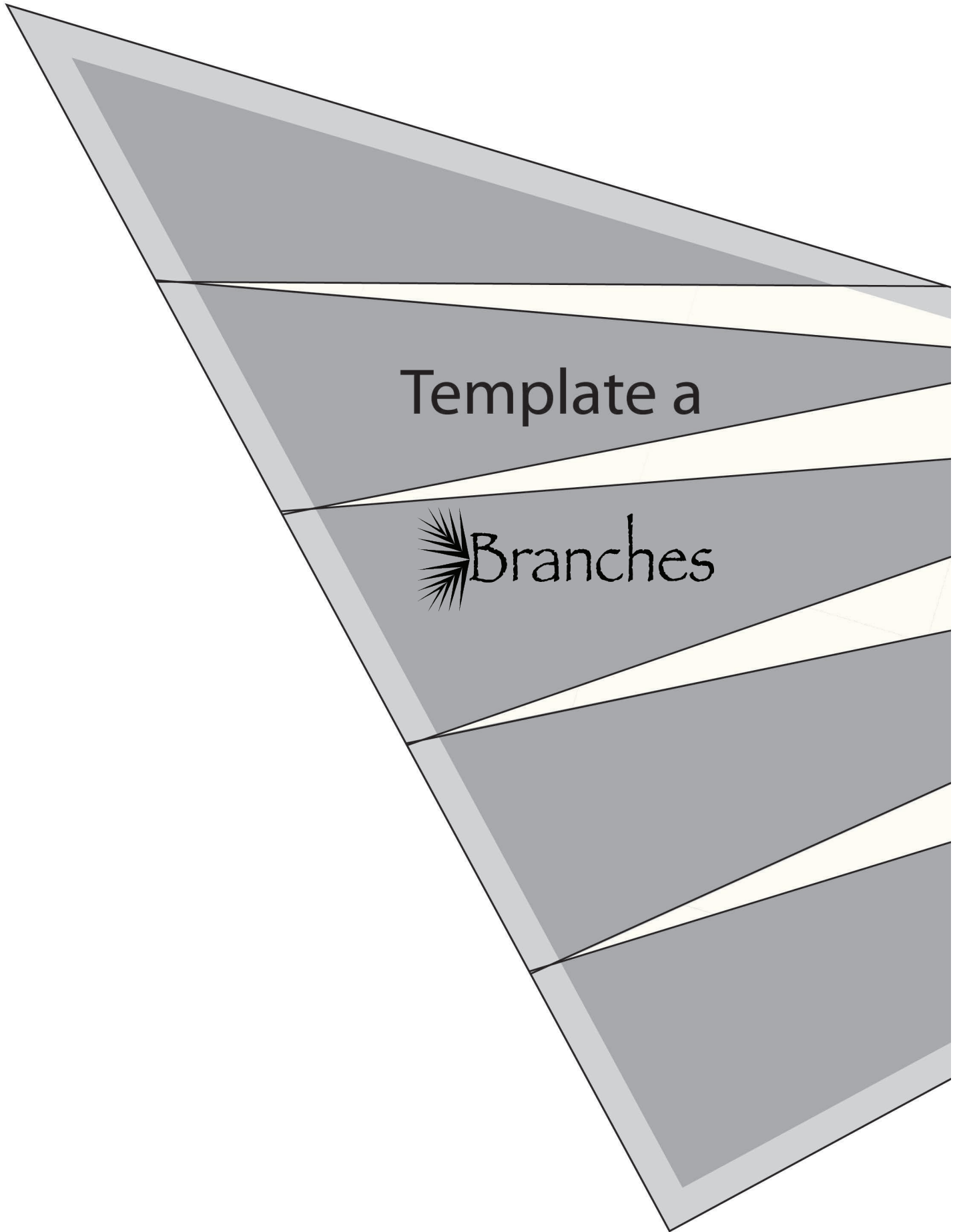








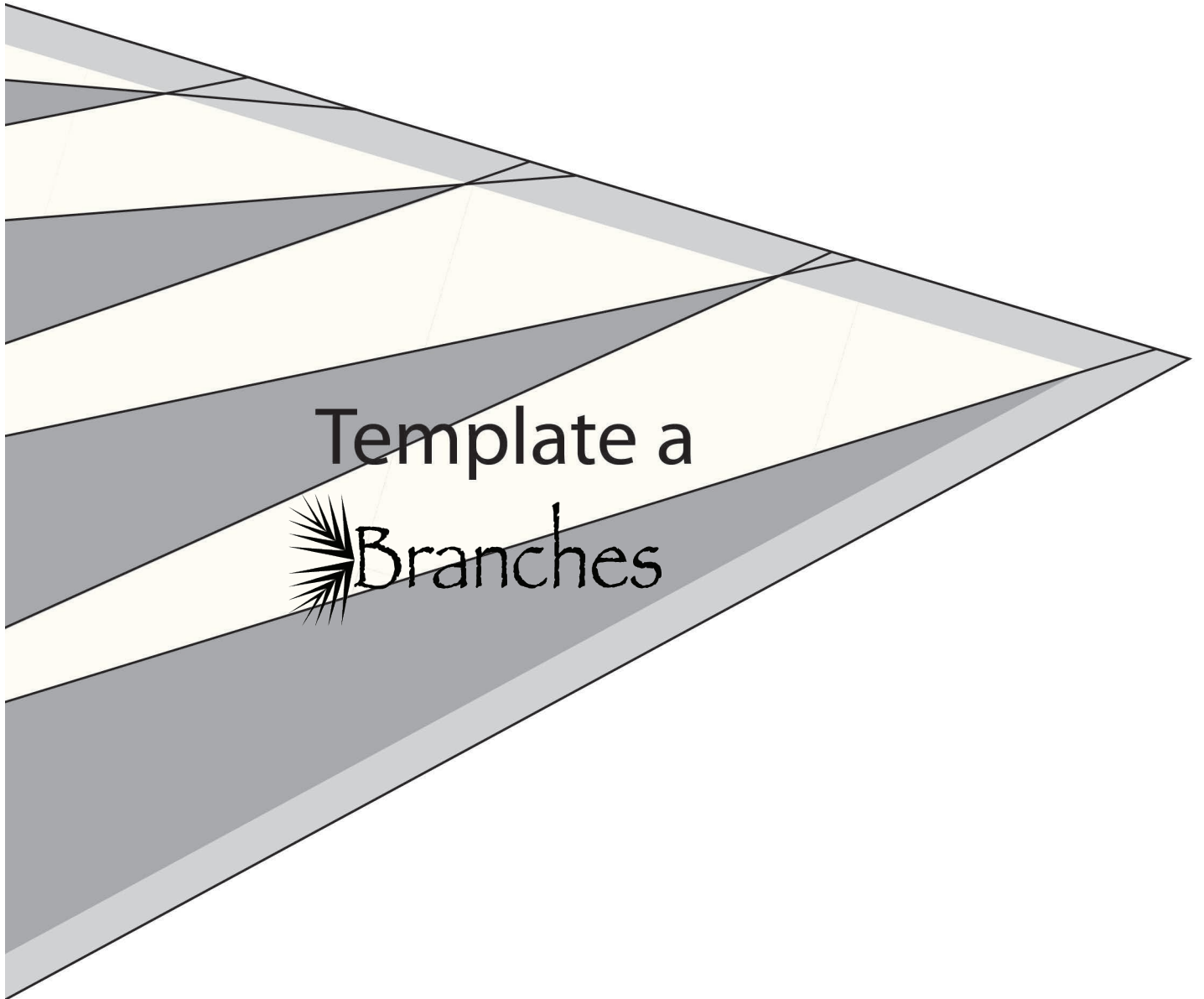


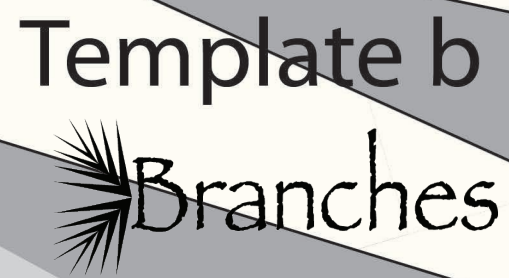


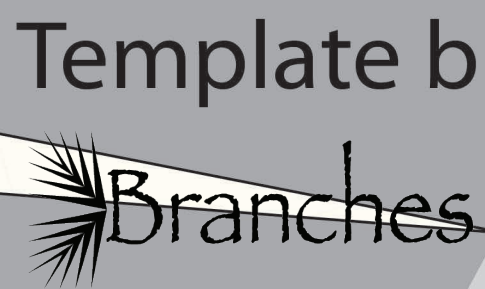
Template a

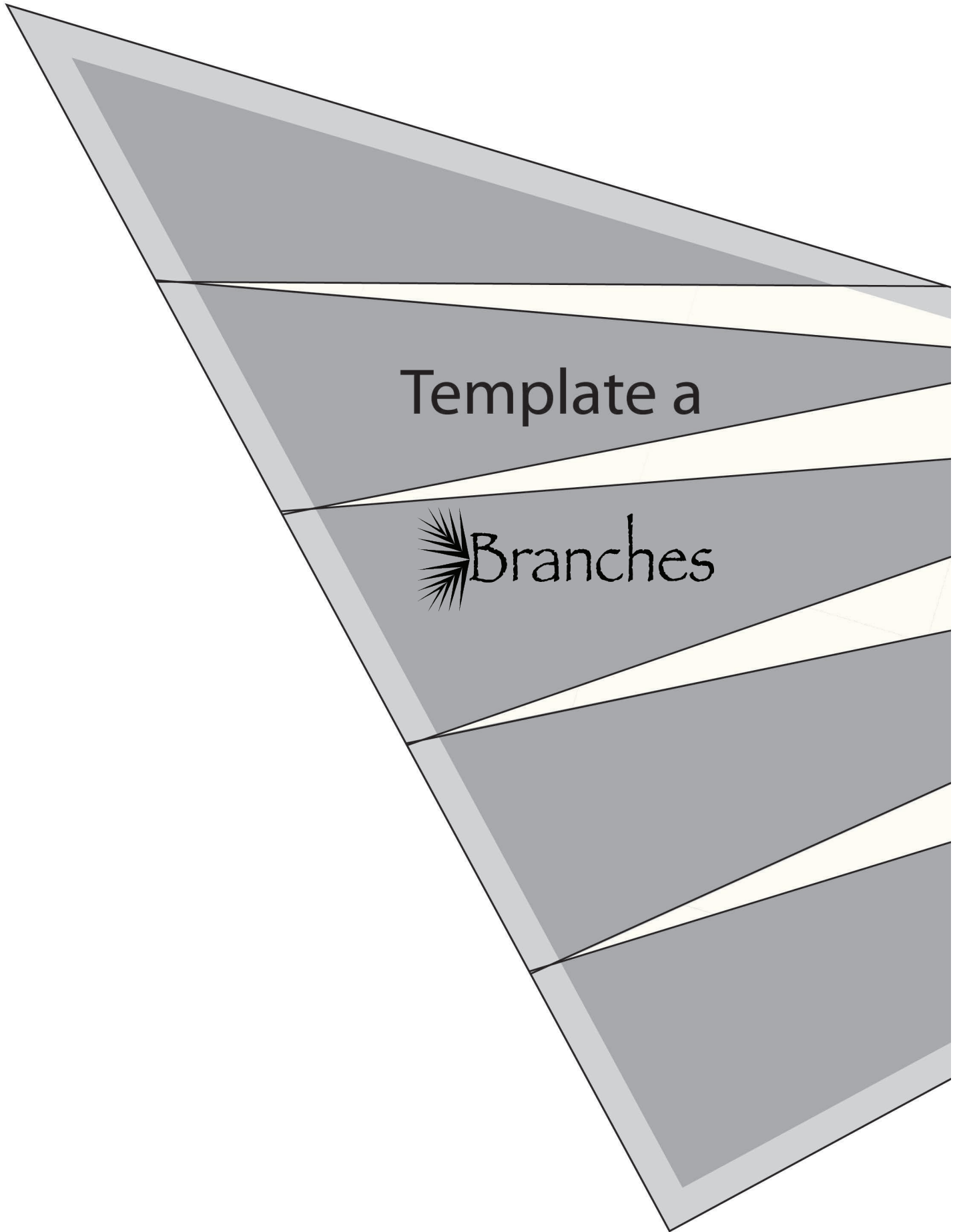


Branches









Template a



