

# Akari



FUSIONS

by AGF

FREE PATTERN

XXXXXXXXXXXXXXXXXXXXXXXXXXXX

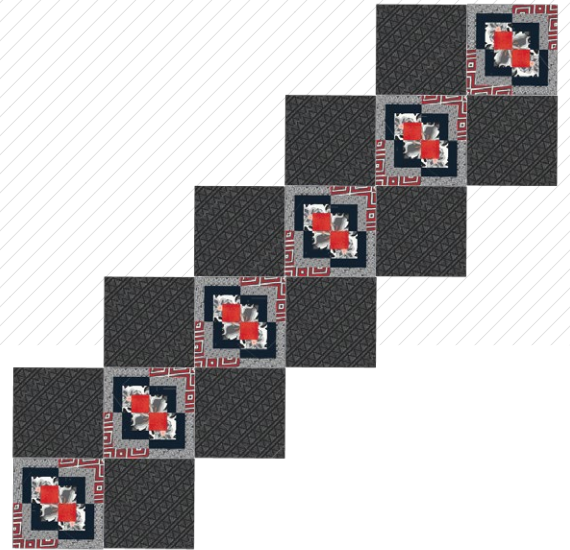




QUILT DESIGNED BY AGFstudio



FABRICS DESIGNED BY AGF STUDIO



FUS-SR-1702  
SOULMATE BLOOMS SILKROAD



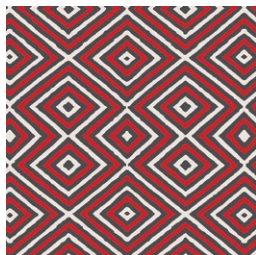
FUS-SR-1706  
MAGNOLIA STUDY SILKROAD



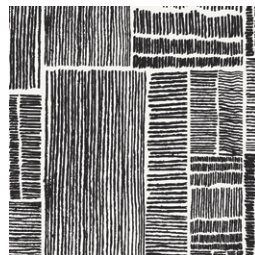
FUS-SR-1705  
VINE SILKROAD



FUS-SR-1700  
AQUARELLA SILKROAD



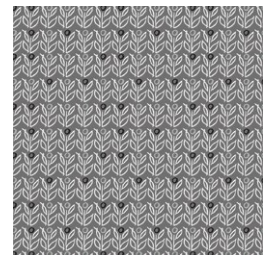
FUS-SR-1704  
MIXED EMOTIONS SILKROAD



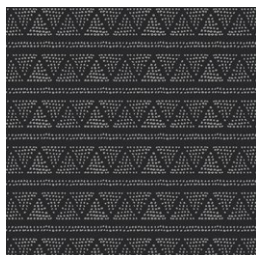
FUS-SR-1707  
LABYRINTH IMPRESSION SILKROAD



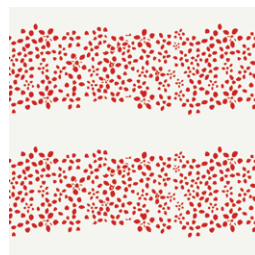
FUS-SR-1708  
MILLEFIORI SILKROAD



FUS-SR-1703  
WALLFLOWER SILKROAD



FUS-SR-1701  
PLOTTED FARM SILKROAD



FUS-SR-1709  
A PATH OF SILKROAD





FINISHED SIZE | 95" X 29"

## FABRIC REQUIREMENTS

Fabric **A** FUS-SR-1701 1¼ yd.

Fabric **B** FUS-SR-1703 ¼ yd.

Fabric **C** FUS-SR-1704 ¾ yd.

Fabric **D** FUS-SR-1700 ¼ Yd

Fabric **E** FE-535 1/8 Yd

Fabric **F** FPE-413 1/8 Yd

Fabric **G** FUS-SR-1709 1¼ Yd

### BACKING FABRIC

FUS-SR-1709 1 ½ yds (Suggested)

## CUTTING DIRECTIONS

*¼" seam allowances are included.  
WOF means width of fabric.*

### Fabric A

- Cut Ten (10) Squares of 10½x 10½

### Fabric B

- Cut Five (5) Stripes of WOF x 1½
- Sub-cut Twelve rectangles of 5½ x 1½
- Sub-cut Twenty Four Rectangles of 4½ x 1½
- Sub-cut Twelve rectangles of 3½ x 1½

### Fabric C

- Cut Three (3) Stripes of WOF x 1½
- Sub-cut Twelve (12) 5½ x 1½ Rectangles
- Sub-cut Twenty Four(24) 4½ x 1½ rectangles

### Fabric D

- Cut Twelve(12) Squares of 2½ x 2½
- Cut Two (2) Stripes of WOF x 1½
- Sub-cut Twelve 3½ x 1½ rectangles
- Sub-cut Twelve 2½ x 1½ rectangles

### Fabric C

- Four (4) Squares of 3½ x 3½
- Ten (10) Squares of 3 7/8 x 3 7/8
- One (1) Rectangles of 6½ x 3½

### Fabric D

- Four(4) Squares of 3 7/8 x 3 7/8

### Fabric E

- Cut Twelve(12) Squares of 2½ x 2½

### Fabric F

- Cut Four (4) Stripes of WOF x 1½
- Sub-cut Twelve (12) 4½ x 1½ Rectangles
- Sub-cut Twenty Four(24) 3½ x 1½ rectangles
- Sub-cut Twelve (12) 2½ x 1½ rectangles

## CONSTRUCTION

*Sew all rights sides together with ¼" seam allowance.*

For this Table Runner we will be making two(2) different Blocks and also we will be using a 10½ x 10½ squares, let's Start by making Block **Y**.

### Block Y Construction:

We will be making Twelve (12) Blocks Y (which means you will be doing this step 12 times) For Block **Y** we will need:

- One (1) 5½ x 1½ rectangle of fabric C
- One (1) 4½ x 1½ Rectangle of fabric C
- One (1) 4½ x 1½ Rectangle of fabric B
- One (1) 3½ x 1½ Rectangle of fabric B
- One (1) 3½ x 1½ Rectangle of fabric F
- One (1) 2½ x 1½ Rectangle of fabric F
- One (1) 2½ x 2½ Square of fabric D

5½ x 1½



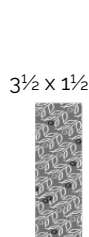
**D**



**F**



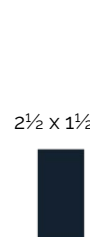
**F**



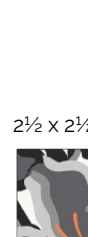
**B**



**B**



**C**



**C**

- 
- The diagram illustrates the iterative construction of a fractal image. It begins with a small image (2 1/2 x 1 1/2) and iteratively adds patterns of increasing size (3 1/2 x 1 1/2, 4 1/2 x 1 1/2, 5 1/2 x 1 1/2) to the bottom and left edges, creating a complex, self-similar structure.

DIAGRAM 2

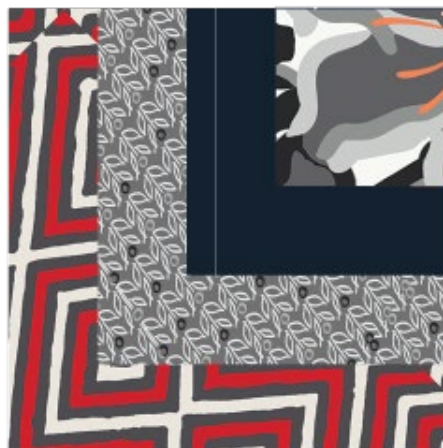


DIAGRAM 2



## Construction of Block X:

- We will be making Twelve (12) Blocks **X** (which means you will be doing this step 12 times) For Block **X** we will need:

- One (1)  $5\frac{1}{2} \times 1\frac{1}{2}$  rectangle of fabric B
- One (1)  $4\frac{1}{2} \times 1\frac{1}{2}$  Rectangle of fabric B
- One (1)  $4\frac{1}{2} \times 1\frac{1}{2}$  Rectangle of fabric F
- One (1)  $3\frac{1}{2} \times 1\frac{1}{2}$  Rectangle of fabric F
- One (1)  $3\frac{1}{2} \times 1\frac{1}{2}$  Rectangle of fabric D
- One (1)  $2\frac{1}{2} \times 1\frac{1}{2}$  Rectangle of fabric D
- One (1)  $2\frac{1}{2} \times 2\frac{1}{2}$  Square of fabric E

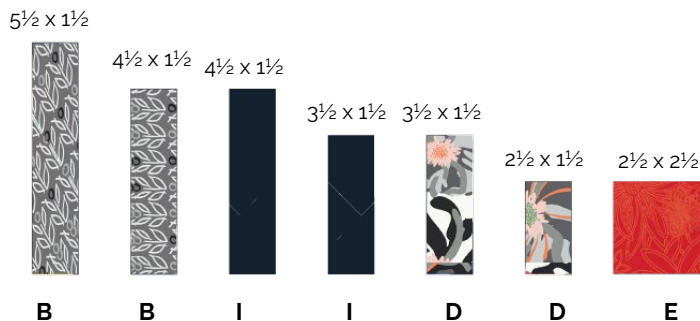


DIAGRAM 3

- Start by attaching the  $2\frac{1}{2} \times 1\frac{1}{2}$  rectangle from fabric **D** to the bottom of the  $2\frac{1}{2} \times 2\frac{1}{2}$  square from fabric **E**
- Take the two (2)  $3\frac{1}{2} \times 1\frac{1}{2}$  rectangle from fabric **D** and sew it to the bottom and then to the left side ( See Diagram below)
- Take the two (2)  $4\frac{1}{2} \times 1\frac{1}{2}$  from fabric **I**, sew it to the bottom, and then to the left side
- Take the two (2)  $5\frac{1}{2} \times 1\frac{1}{2}$  from fabric **B**, sew it to the bottom, and then to the left side (See Diagram below)

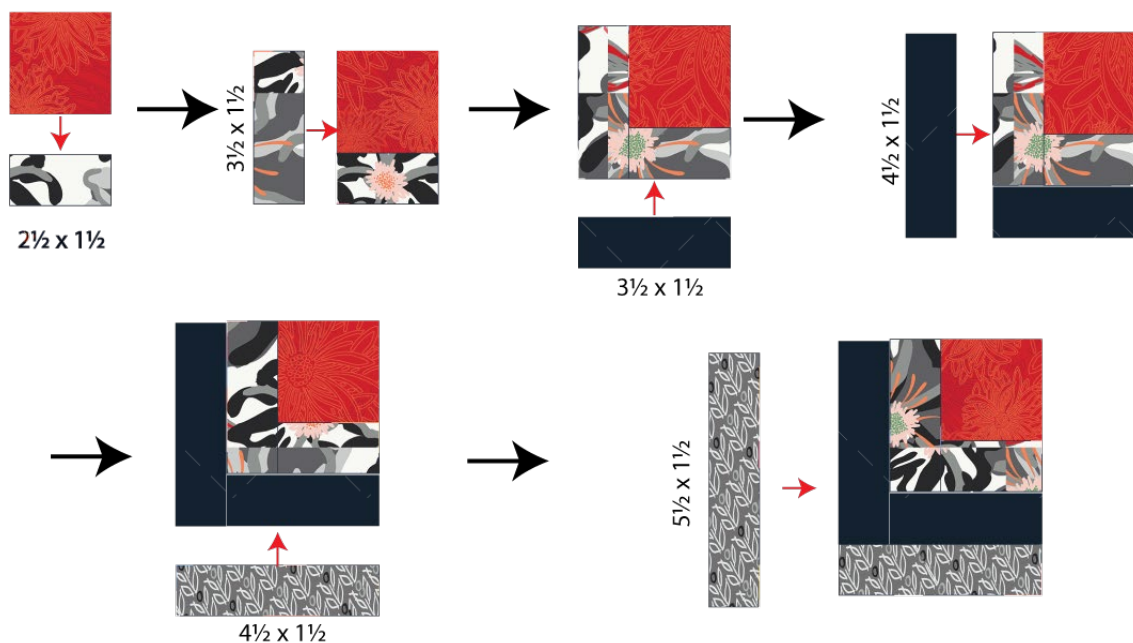


DIAGRAM 4

## Block X

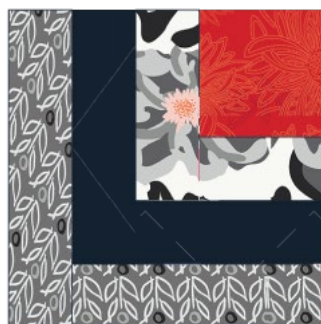


DIAGRAM 5

After You have all your blocks done

- Twelve Blocks Y
- Twelve Blocks X
- 10 Squares of 10½ x10½ from Fabric A .

We can start building our Block **Z** .

- First We will sew Block **Y** and Block **X** and Block **X** and Block **Y**
- Now place **YX** at the top and **XY** at the bottom
- Repeat this step four (5 ) more times. You should have 6 blocks **Z**

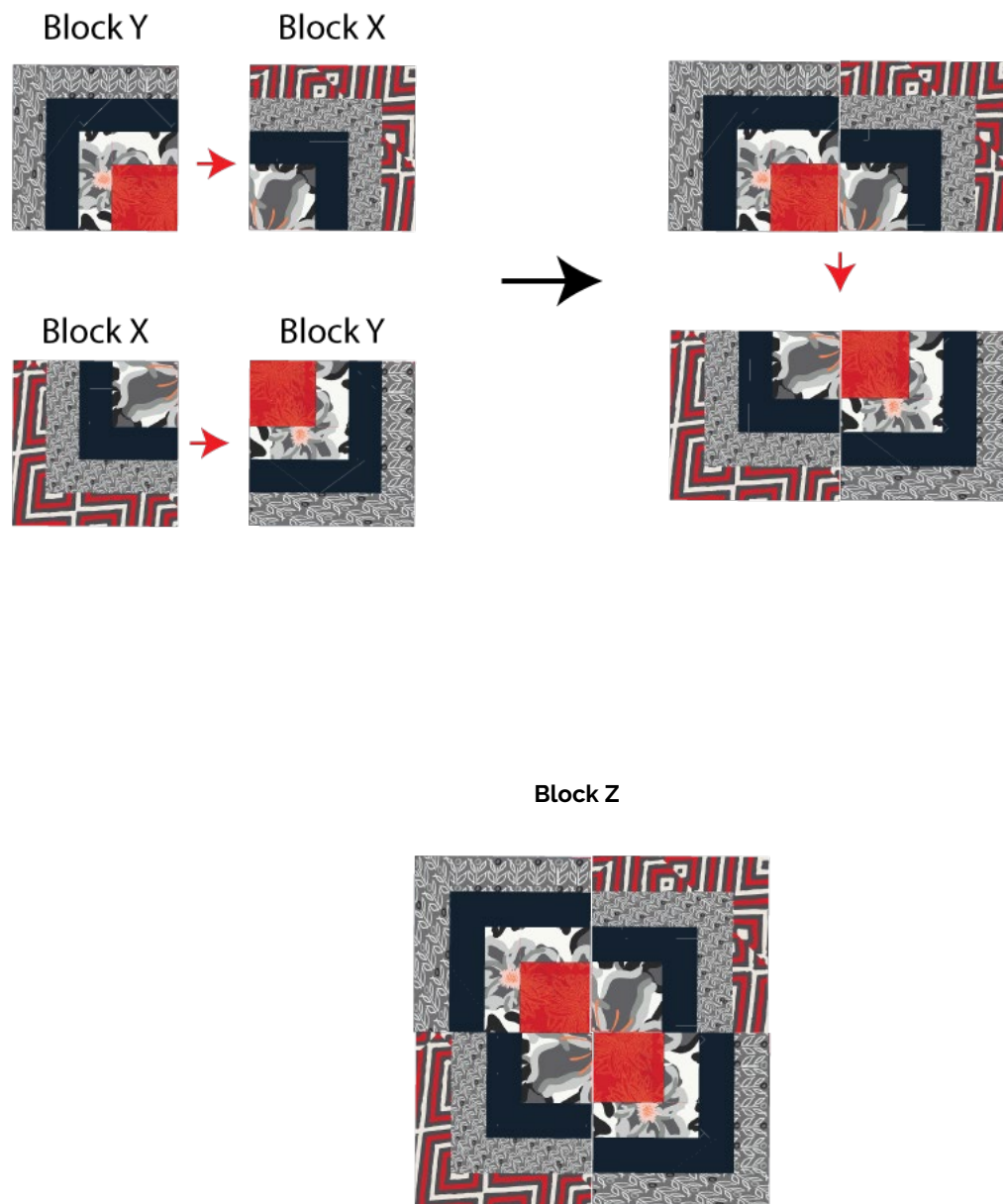


DIAGRAM 6

After building Blocks Z. Now we can sew our table Runner  
 Pair Block Z with a  $10\frac{1}{2} \times 10\frac{1}{2}$  square and (Repeat 1more time), you should get two of these.

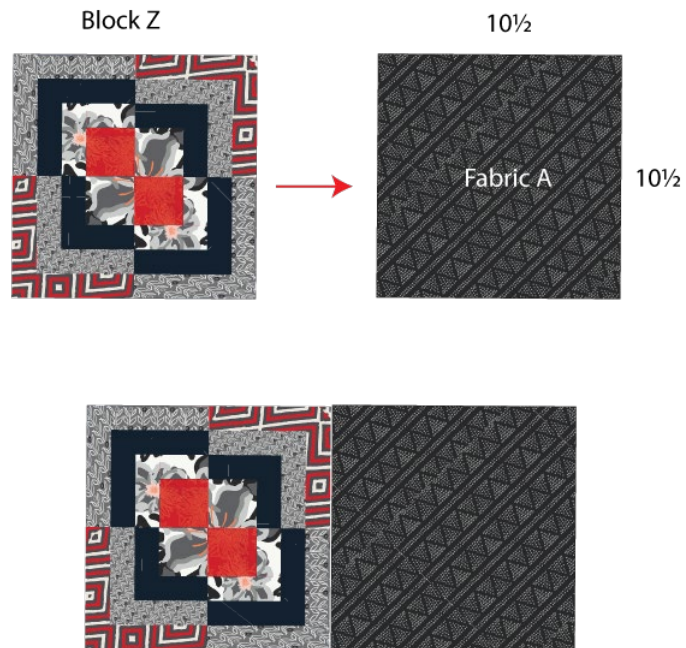


DIAGRAM 7

Pair a  $10\frac{1}{2} \times 10\frac{1}{2}$  square with Block Z and a  $10\frac{1}{2} \times 10\frac{1}{2}$  square (Repeat 3 more times) You should have 4 of these

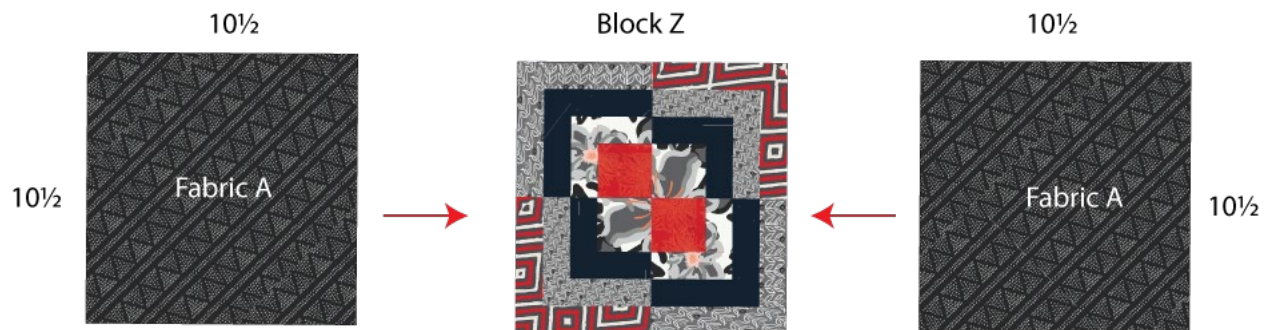


DIAGRAM 8



Arrange the rows as diagram below, notice that the top and the bottom have only Block **Z** and the  $10\frac{1}{2} \times 10\frac{1}{2}$  square from fabric **A**.

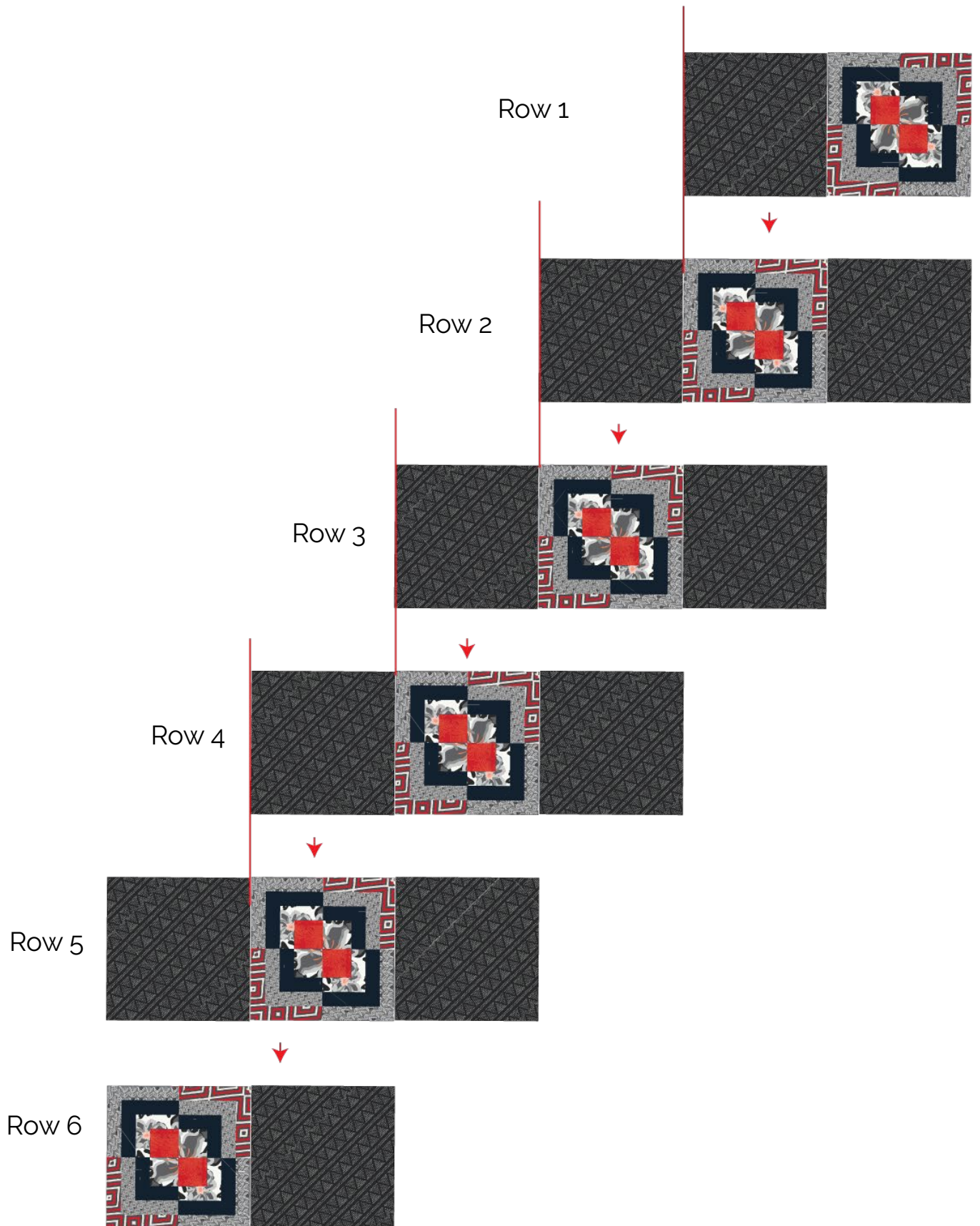


DIAGRAM 9



- Quilt as desired
- Place Fabric **G** and the table runner Block right sides Together and sew  $\frac{1}{4}$ " around the table runner block leaving Approx 3" to 4" (See Diagram 10)
- Cut the excess, folded inside out and sew the opening by hand

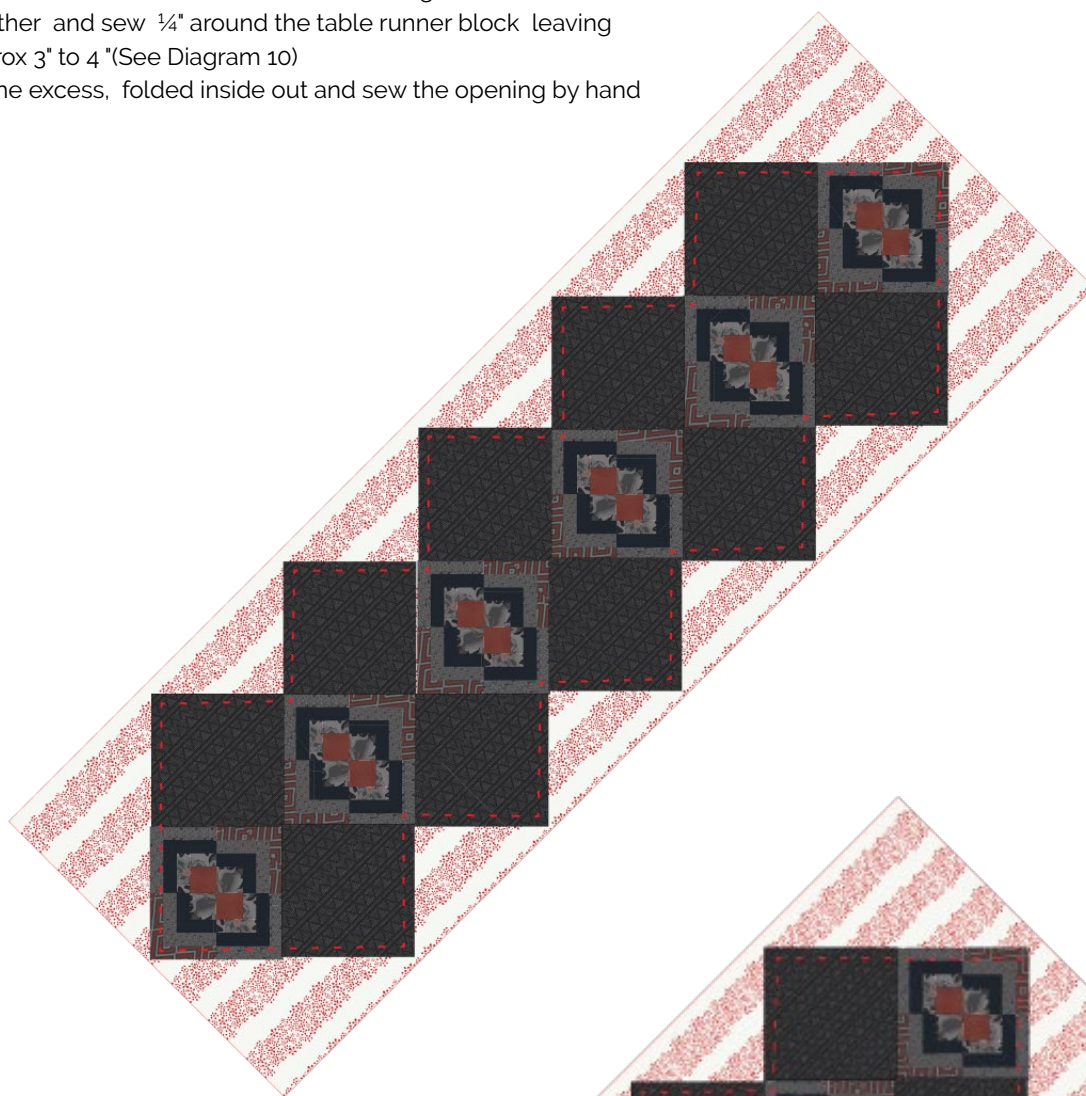


DIAGRAM 10

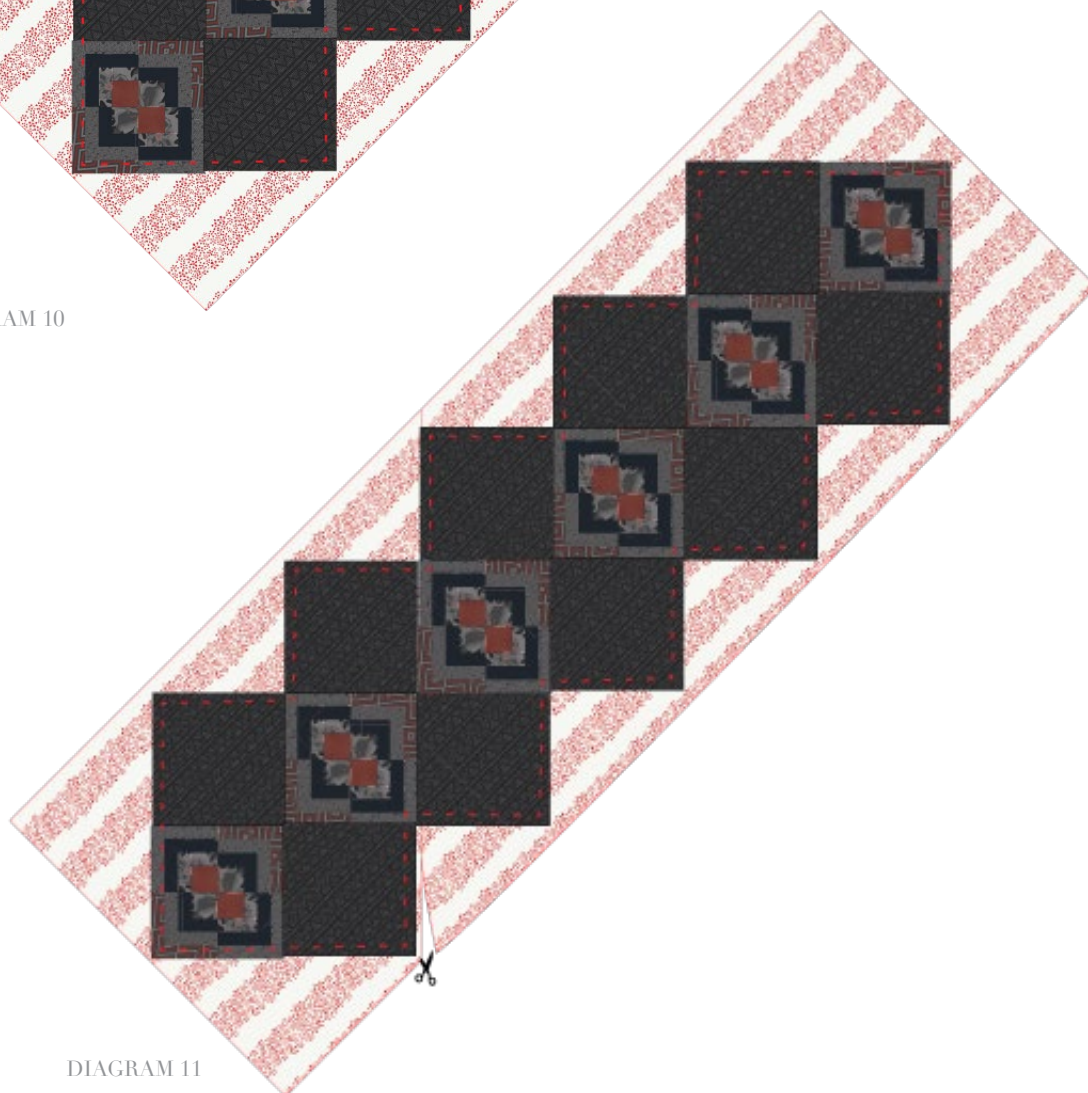


DIAGRAM 11

xx

xx

*Congratulations*  
*& enjoy*

xx



[artgalleryfabrics.com](http://artgalleryfabrics.com)

NOTE: While all possible care has been taken to ensure the accuracy of this pattern, We are not responsible for printing errors or the way in which individual work varies. Please read instructions carefully before starting the construction of this quilt. If desired, wash and iron your fabrics before starting to cut.

© 2018 Courtesy of Art Gallery Quilts LLC. All Rights Reserved.