

MATCHMADE | BY PAT BRAVO | AVAILABLE JANUARY 2019

FREE QUILT PATTERN

# SOULMATES

DESIGNED BY Pat Bravo



FEEL THE DIFFERENCE  
artgalleryfabrics.com

## «Matchmade» COLLECTION

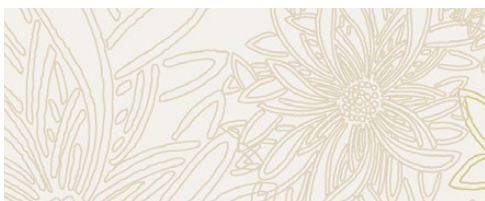
AVAILABLE JANUARY 2019

### KIT QUANTITIES

MTM-9001	1 YD
MTM-9102	3/8 YD
MTM-9103	3/8 YD
MTM-9200	3/8 YD
MTM-9201	3/8 YD
MTM-9204	1/8 YD
MTM-9301	3/8 YD
MTM-9303	3/8 YD
MTM-9400	3/8 YD
MTM-9404	3/4 YD
DSE-709	2 1/2 YD
Backing	3 1/2 YD

FINISHED SIZE 60" x 60"

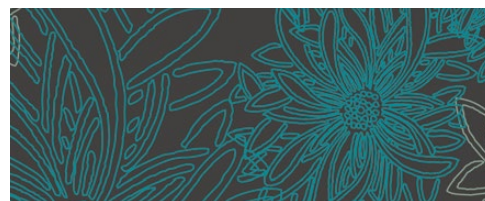
### OPTIONAL COORDINATING ELEMENTS



FE-533 WINTER WHEAT



DSE-704 SHADOW |new|



FE-505 DEEP OCEAN



DSE-709 STELLAR |new|



PE-428 NOCTURNAL



FE-538 NOCTURNE



PE-465 DENIM BLUE



PE-418 TILE BLUE



PE-439 RASPBERRY ROSE



PE-411 QUARTZ PINK

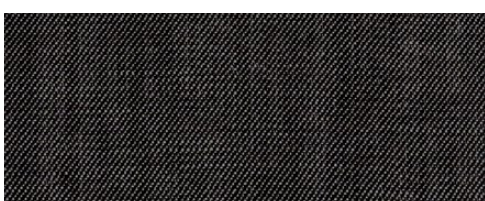


PE-459 TURMERIC



FE-539 ESERALDA

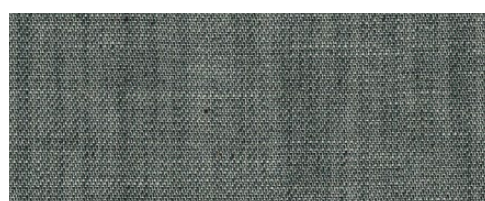
### mix & match with THE DENIM STUDIO



DEN-S-2000 WICKED SKY



DEN-S-2008 CLASSIC DENIM



DEN-S-2002 COOL FOLIAGE



DEN-S-2006 ADOBE CLAY

# Matchmade

INSPIRATIONAL BOARD

## APPAREL



NAMED CLOTHING  
LUMME PLEATED SKIRT



SIMPLY SEWING MAG  
WALKLEY DRESS



APRIL RHODES  
STAPLE DRESS



NAMED CLOTHING  
QUINN SHIRT

## CHILDREN



BUTTERICK - B6045



HEY THERE THREADS  
BABY BASIC SHORTS



LGB STUDIO  
LEATHER ACCENT  
FOLD OVER POUCH



SASSAFRAS LANE DESIGNS  
BUBBA BOWLING BAG

## HOME DECOR



ORBTILES TABLE RUNNER 66" x 21"  
[liveartgalleryfabrics.com/free-sewing-patterns/](http://liveartgalleryfabrics.com/free-sewing-patterns/)



### FABRIC REQUIREMENTS

Fabric A	MTM-9401	5/8 yd.
Fabric B	PE-419	1 1/3 yd.
Fabric C	MTM-9304	1/2 yd.
Fabric D	MTM-9103	1/2 yd.
Fabric E	PRE-803	1 yd.
Fabric F	PE-424	5/8 yd.
Fabric G	PE-403	1/2 yd.
Fabric H	MTM-9300	1/2 yd.
Fabric I	PE-414	3/8 yd.
Fabric J	MTM-9102	1/2 yd.
Fabric K	PE-401	3/8 yd.
Fabric L	MTM-9301	1/4 yd.
Fabric M	MTM-9200	5/8 yd.

Backing:  
Fabric E PRE-803 4 yds (Suggested)  
Binding:  
Fabric M MTM-9200 (Included)



FREE SPIRIT QUILT PATTERN 57" x 74"  
[liveartgalleryfabrics.com/free-quilting-patterns/](http://liveartgalleryfabrics.com/free-quilting-patterns/)