

XXXXXX

## A vibrant, multi-colored quilt with a complex geometric pattern of triangles and squares in shades of red, green, yellow, and black, displayed against a stone wall. The quilt features a central square panel with a smaller square in the middle, surrounded by concentric borders of various geometric shapes. The colors are bright and contrasting, creating a visually striking effect. The quilt is draped over a rough, grey stone wall, and a tree trunk is visible in the background.

XXXXXXXXXXXXXXXXXXXXXXXXXXXX





# Mystica

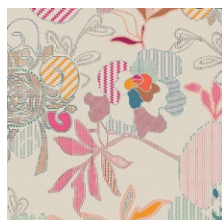
QUILT DESIGNED BY PAT BRAVO

## LEGENDARY

FABRICS DESIGNED BY PAT BRAVO



### BOHO SOUL



LGD-49700  
STITCHED ANTHOMANIA BOHO



LGD-49701  
MARQUETERIE BOHO



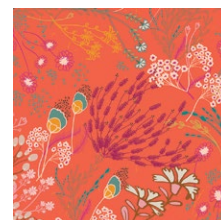
LGD-49702  
WONDERLUST BOHO



LGD-49703  
BRIT BOUTIQUE BOHO



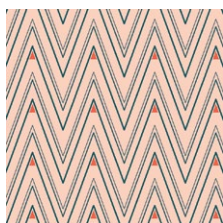
LGD-49704  
FEMME METALE BOHO



LGD-49705  
MEADOW BOHO



LGD-49706  
COLLAR ENDS BOHO



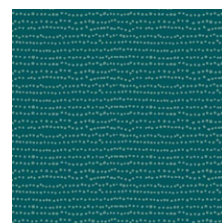
LGD-49707  
COLLAR ENDS SOUL



LGD-49708  
TRINKETS BOHO



LGD-49709  
TRINKETS SOUL

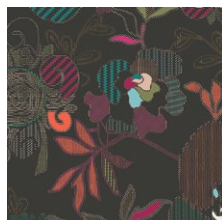


LGD-49710  
FLECKS BOHO



LGD-49711  
FLECKS SOUL

### BOLD DREAMS



LGD-39700  
STITCHED ANTHOMANIA BOLD



LGD-39701  
MARQUETERIE BOLD



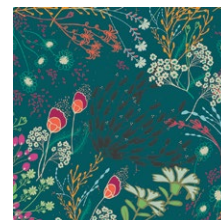
LGD-39702  
WONDERLUST BOLD



LGD-39703  
BRIT BOUTIQUE BOLD



LGD-39704  
FEMME METALE BOLD



LGD-39705  
MEADOW BOLD



LGD-39706  
COLLAR ENDS BOLD



LGD-39707  
COLLAR ENDS DREAMS



LGD-39708  
TRINKETS BOLD



LGD-39709  
TRINKETS DREAMS



LGD-39710  
FLECKS BOLD



LGD-39711  
FLECKS DREAMS



FEEL THE DIFFERENCE © 2018 Courtesy of Art Gallery Quilts LLC. All Rights Reserved.



FINISHED SIZE | 84.5" x 84.5"

## FABRIC REQUIREMENTS

Fabric <b>A</b>	LGD-49704	½ yd.
Fabric <b>B</b>	LGD-49703	1 ⅝ yd.
Fabric <b>C</b>	LGD-49701	⅝ yd.
Fabric <b>D</b>	LGD-49705	¾ yd.
Fabric <b>E</b>	LGD-49702	½ yd.
Fabric <b>F</b>	LGD-39700	⅙ yd.
Fabric <b>G</b>	LGD-49706	1 yd.
Fabric <b>H</b>	LGD-39701	¼ yd.
Fabric <b>I</b>	LGD-49710	⅝ yd.
Fabric <b>J</b>	PRE-806	½ yd.
Fabric <b>K</b>	FE-504	3 yd.

### BACKING FABRIC

LGD-39700 5 yds. *(Suggested)*

### BINDING FABRIC

LGD-49702 (Fabric **E**) *(included)*

## CUTTING DIRECTIONS

*¼" seam allowances are included.  
WOF means width of fabric.*

Thirty (32) squares of 3 ⅞" from fabric **A**  
Eighty Four (84) squares of 3 ½" from fabric **B**  
Ninety (90) squares of 3 ⅞" from fabric **B**  
Fifty (50) Squares of 3 ⅞" from fabric **C** and **I**  
Twenty Four (24) Squares of 3 ½" from fabric **D**  
Twenty Eight (28) Squares of 3 ⅞" from fabric **D**  
Six (6) Squares of 3 ⅞" from fabric **E**  
Four (4) Squares of 3 ⅞" from fabric **F**,  
Fifty Six Squares of 3 ½" from fabric **G**  
Sixteen (16) Squares of 3 ⅞" from fabric **G**  
Twelve (12) Squares of 3 ½" from fabric **H**  
Six (6) Squares of 3 ⅞" from fabric **H**

Thirty Six (36) Squares 3 ⅞" from fabric **J**

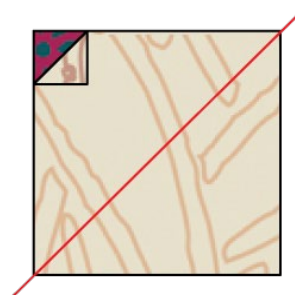
Thirty Six (36) Squares of 3 ½" from fabric **K**

Two Hundred and Fifty Six (256) Squares of 3 ⅞" from fabric **K**

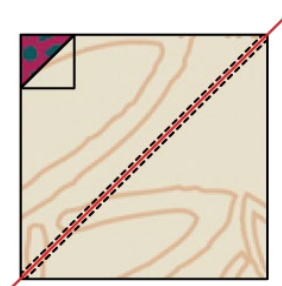
**This quilt top is made out of 3 ½ squares and 3 ½ HST combinations .**

## HST CONSTRUCTION

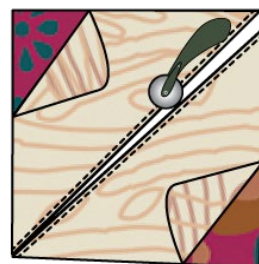
*Sew all rights sides together with ¼" seam allowance.  
HST means Half Square Triangles.*



Place the two Squares together and draw a diagonal line on the wrong side of the fabric



Sew ¼" on each side of the drawn line.



Using a rotary blade  
Cut the square into  
Two triangles



Press open seams  
and you will get  
two HST( half  
square triangles

- After Cutting the fabrics we will have

56 squares from fabric G

12 Squares from fabric H

36 Squares from fabric K

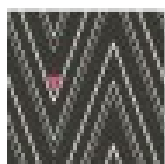
24 Squares from fabric D

84 Squares from fabric B

See Diagram below.

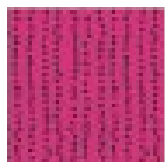
3½ Squares

56



Fabric G

12



Fabric H

36



Fabric K

24



Fabric D

84



Fabric B

DIAGRAM 2

- We will also have eleven Different HST Combinations, See Diagram 3

60 HST, from fabric A-K

56 HST from fabric D-K

52 HST from fabric J-C

100 HST from fabric K-I

180 HST from fabric K-B

48 HST from fabric K-C

20 HST from fabric K-J

32 HST from fabric G-K

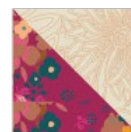
8 HST from fabric F-E

4 HST from fabric E-A

12 HST from fabric H-K

A-K

60



K-C

48



D-K

56



K-J

20



J-C

52



G-K

32



K-I

100



F-E

8



K-B

180



E-A

4



H-K

12



DIAGRAM 3

## ASSEMBLING THE TOP

*Sew all rights sides together with  
1/4" seam allowance. Press open.*

- Now that all the HST's are sewn together please refer to the diagram below for HST rows placement. for Block X
- This Quilt was build base on two Blocks. We will call them Block **X** and Block **Y**.
- Each Block has 14 rows (we will make two (2) block **X** and Two (2) Block **Y**

Block X

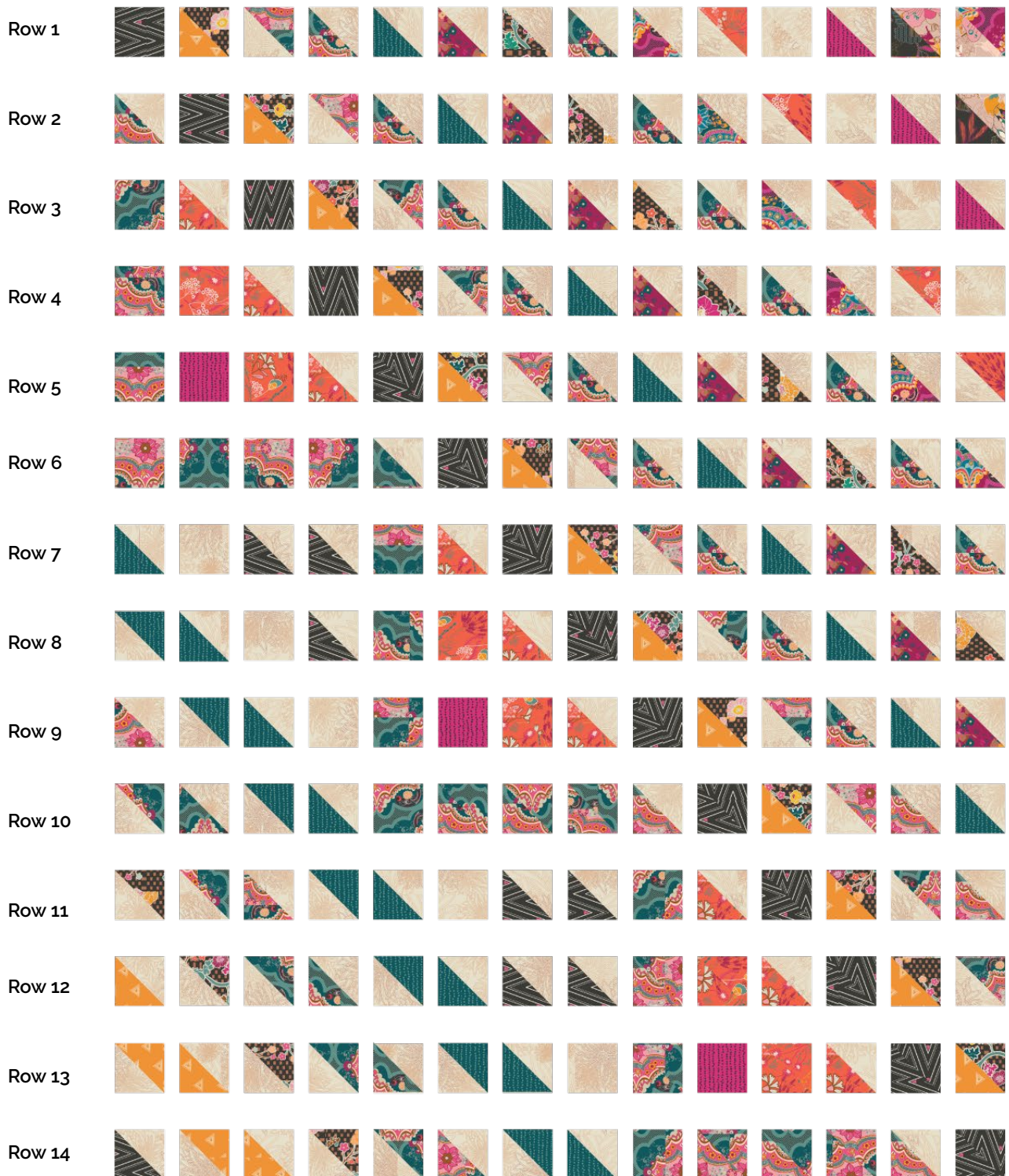
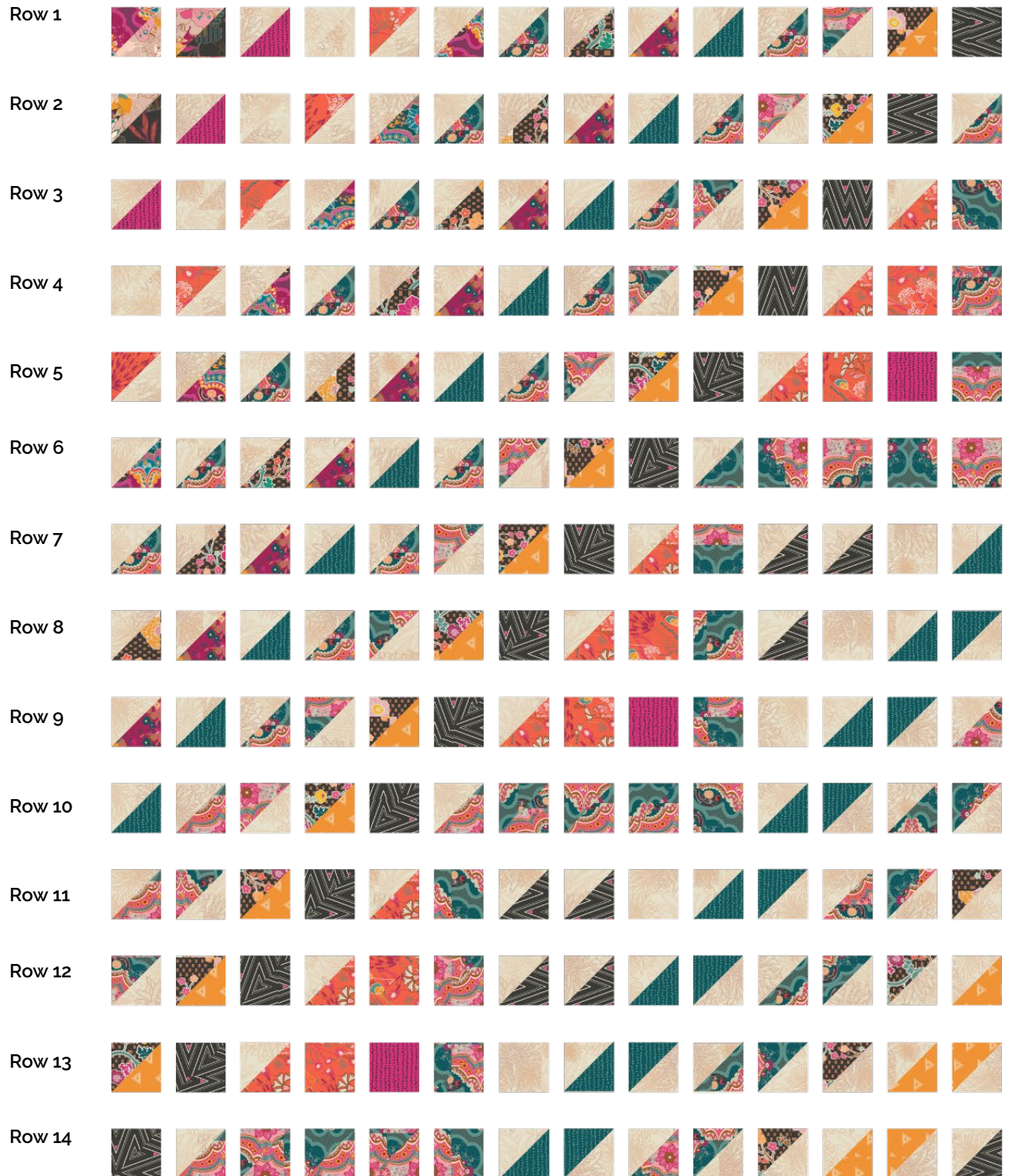


DIAGRAM 4



- Block Y is the same as the previous block, but mirrored.
- Sew in a horizontal way, and then sew the rows together.

Block Y





A vibrant, multi-colored quilt pattern featuring a complex geometric design. The pattern is composed of numerous small squares and triangles in a variety of colors including teal, orange, pink, purple, and black, set against a light beige background. The design is characterized by strong diagonal lines and a central square motif, creating a dynamic and visually striking composition.

A vibrant, multi-colored quilt pattern featuring a complex geometric design. The pattern is composed of numerous small triangles and squares arranged in a larger, symmetrical, star-like or floral motif. The colors used include bright red, orange, yellow, green, blue, and black, set against a white background. The design is intricate, with many small, repeating geometric units that create a rich, textured appearance. The overall effect is one of dynamic energy and visual complexity.



A vibrant, multi-colored quilt pattern featuring a complex geometric design. The pattern is composed of numerous small squares and triangles, each containing different fabric prints or solid colors. The colors include red, orange, teal, black, white, and pink. The design is highly detailed and intricate, with a mix of floral, geometric, and abstract patterns. The overall effect is a rich, textured surface with a strong visual impact.

A vibrant, complex quilt pattern featuring a variety of colors including teal, orange, pink, and black, arranged in a geometric design with diagonal bands and floral motifs. The pattern is composed of numerous small, irregular shapes, including triangles and squares, some of which contain floral or abstract designs. The overall effect is a rich, textured tapestry of color and geometric form.



## QUILT ASSEMBLY

*Sew rights sides together.*

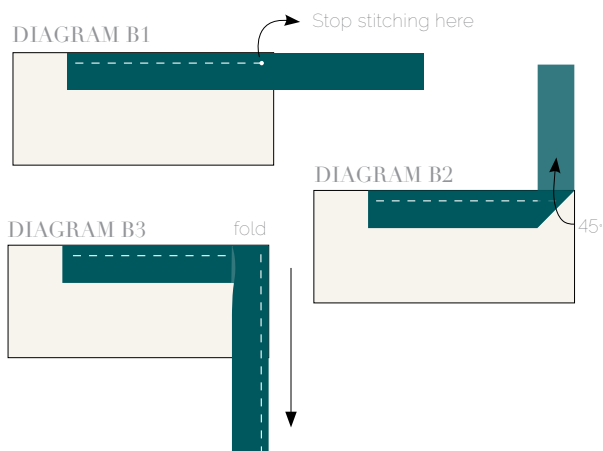
- Place BACKING FABRIC on a large surface wrong side up. Stretch it with masking tape against that surface.
- Place BATTING on top of backing fabric.
- Place TOP on top of the batting with right side facing up. Smooth away wrinkles using your hands.
- Pin all layers together and baste with basting thread, using long stitches. You can also use safety pins to join the layers.
- Machine or hand quilt starting at the center and working towards the corners. Remember that quilting motifs are a matter of personal preference. Have fun choosing yours!
- After you finished, trim excess of any fabric or batting, squaring the quilt to proceed to bind it.

## BINDING

*Sew rights sides together.*

- Cut enough strips  $1\frac{1}{2}$ ' wide by the width of the fabric **C** to make a final strip 350' long. Start sewing the binding strip in the middle of one of the sides of the quilt, placing the strip right side down and leaving an approximated 5' tail. Sew with  $\frac{1}{4}$ ' seam allowance (using straight stitch), aligning the strip's raw edge with the quilt top's raw edge.
- Stop stitching  $\frac{1}{4}$ ' before the edge of the quilt (**DIAGRAM B 1**). Clip the threads. Remove the quilt from under the machine presser foot. Fold the strip in a motion of  $45^\circ$  and upward, pressing with your fingers (**DIAGRAM B2**). Hold this fold with your finger, bring the strip down in line with the next edge, making a horizontal fold that aligns with the top edge of the quilt (**DIAGRAM B3**). Start sewing at  $\frac{1}{4}$ ' of the border, stitching all the layers. Do the same in the four corners of the quilt.

- Stop stitching before you reach the last 5 or 6 inches. Cut the threads and remove the quilt from under the machine presser foot. Lay the loose ends of the binding flat along the quilt edge, folding the ends back on themselves where they meet. Press them together to form a crease. Using this crease as the stitching line, sew the two open ends of the binding with right sides together (you can help yourself marking with a pencil if the crease is difficult to see).
- Trim seam to  $\frac{1}{4}$ ' and press open. Complete the sewing. Turn binding to back of the quilt, turn raw edge inside and stitch by hand using blind stitch.



[artgalleryfabrics.com](http://artgalleryfabrics.com)

NOTE: While all possible care has been taken to ensure the accuracy of this pattern, We are not responsible for printing errors or the way in which individual work varies. Please read instructions carefully before starting the construction of this quilt. If desired, wash and iron your fabrics before starting to cut.

© 2018 Courtesy of Art Gallery Quilts LLC. All Rights Reserved.