

XXXXXX

A woman with short brown hair and glasses is sitting cross-legged on a dark wooden floor. She is wearing a white button-down shirt and blue jeans with a tear at the knee. She is holding a large, rectangular, multi-colored patterned pillow in front of her. The pillow features various geometric and abstract patterns in shades of pink, yellow, teal, and black. The background is a solid teal wall.

XXXXXXXXXXXXXXXXXXXX



Infinite

PILLOW DESIGNED BY AGF STUDIO

LEGENDARY

FABRICS DESIGNED BY PAT BRAVO

BOHO SOUL



LGD-49700
STITCHED ANTHOMANIA BOHO



LGD-49701
MARQUETERIE BOHO



LGD-49702
WONDERLUST BOHO



LGD-49703
BRIT BOUTIQUE BOHO



LGD-49704
FEMME METALE BOHO



LGD-49705
MEADOW BOHO



LGD-49706
COLLAR ENDS BOHO



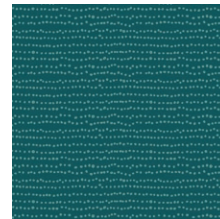
LGD-49707
COLLAR ENDS SOUL



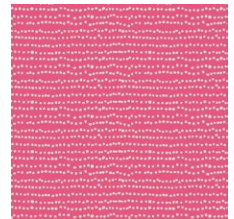
LGD-49708
TRINKETS BOHO



LGD-49709
TRINKETS SOUL

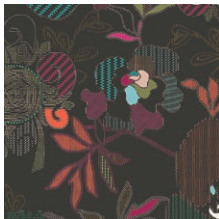


LGD-49710
FLECKS BOHO



LGD-49711
FLECKS SOUL

BOLD DREAMS



LGD-39700
STITCHED ANTHOMANIA BOLD



LGD-39701
MARQUETERIE BOLD



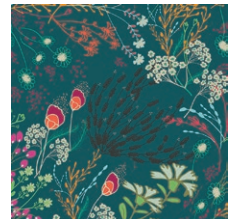
LGD-39702
WONDERLUST BOLD



LGD-39703
BRIT BOUTIQUE BOLD



LGD-39704
FEMME METALE BOLD



LGD-39705
MEADOW BOLD



LGD-39706
COLLAR ENDS BOLD



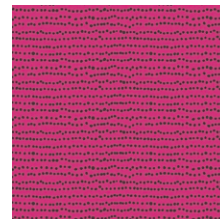
LGD-39707
COLLAR ENDS DREAMS



LGD-39708
TRINKETS BOLD



LGD-39709
TRINKETS DREAMS



LGD-39710
FLECKS BOLD



LGD-39711
FLECKS DREAMS



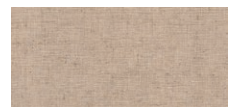
PE-439
RASPBERRY ROSE



PE-459
TURMERIC



PE-413
CAVIAR



DEN-L-4000
SOFT SAND



FEEL THE DIFFERENCE © 2018 Courtesy of Art Gallery Quilts LLC. All Rights Reserved.

FINISHED SIZE | 20' x 30'

FABRIC REQUIREMENTS

Fabric A	LGD-49706	¼ yd.
Fabric B	LGD-49708	⅓ yd.
Fabric C	LGD-49710	⅓ yd.
Fabric D	LGD-39705	⅓ yd.
Fabric E	PE-439	⅓ yd.
Fabric F	PE-459	⅓ yd.
Fabric G	PE-413	⅓ yd.
Fabric H	DEN-L-4000	⅓ yd.

BACKING FABRIC

LGD-49706 - 1 ⅓ yds. *(Suggested)*

CUTTING DIRECTIONS

¼" seam allowances are included.

- Two (2) 4' x 21' strips from Fabric **A**
- Two (2) 3 1/2' x 21' strips from Fabric **A**
- Two (2) 4' x 21' strips from Fabric **B**
- One (1) 3' x 21' strip from Fabric **C**
- Two (2) 3 1/2' x 21' strips from Fabric **D**
- One (1) 2 1/2' x 21' strip from Fabric **E**
- One (1) 2' x 21' strip from Fabric **E**
- One (1) 2' x 21' strip from Fabric **F**
- One (1) 2 1/2' x 21' strip from Fabric **G**
- Two (2) 2' x 21' strips from Fabric **G**
- Five (5) 1 1/2' x 3' strips from Fabric **G**
- One (1) 3 1/2' x 21' strip from Fabric **H**
- Four (4) 3' x 4 1/2' rectangles from Fabric **H**
- Envelope Backing - Two (2) 21' x 36' rectangles from Fabric **A** (Fold in half)

CONSTRUCTION

Sew all rights sides together with ¼" seam allowance. Unless noted otherwise!

- To create your strip pieced unit. Sew together the following strips as follows:

• A-G-D-E-A-G-D



3 1/2" x 21"
2" x 21"
3 1/2" x 21"
2 1/2" x 21"
3 1/2" x 21"
2" x 21"
3 1/2" x 21"

DIAGRAM 1

- Cut out a 4 1/2' x 21' strip following Diagram 1.
- To create your dashed strip sew the following pieces together:
- **G-H-G-H-G-H-G-H- G-H-G**



DIAGRAM 2

- Sew your remaining strips together following the block design below!

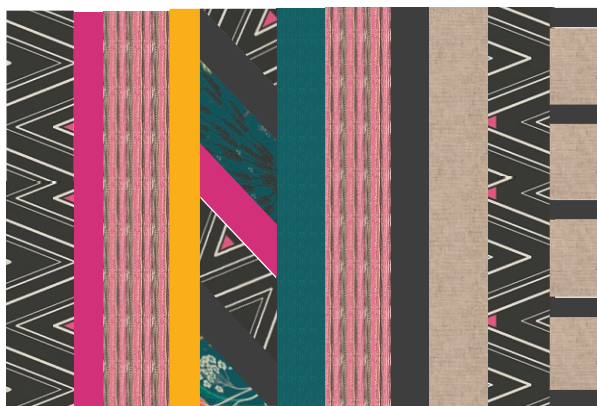


DIAGRAM 3

- Quilt your pillow top as desired! We used a lot of decorative stitches and hand stitching with embroidery thread.

ENVELOPE BACKING

Sew all rights sides together with 1/4" seam allowance. Press open.

- Take your 21" x36" rectangles from Fabric **A** and fold in half and press fold.. Sew a 1/2" top stitch to secure the fold. Place the pieces right sides together over lapping each other on top of your pillow top.
- Stitch around all four sides of your pillow at 1/2". Snip your corners at the seam allowance to get rid of extra bulk and flip your pillow right side out!
- Stuff your pillow with a pillow form and your pillow is complete!



artgalleryfabrics.com

NOTE: While all possible care has been taken to ensure the accuracy of this pattern, We are not responsible for printing errors or the way in which individual work varies. Please read instructions carefully before starting the construction of this quilt. If desired, wash and iron your fabrics before starting to cut.