

XXXXXX

## A close-up photograph of a person's hands holding a small, rectangular, dark green pouch. The pouch is decorated with a vibrant, multi-colored pattern featuring large pink, yellow, and orange flowers, green leaves, and a black and white checkered section. A red tassel is attached to the top left corner. The background is a blurred, colorful floral pattern.

XXXXXXXXXXXXXXXXXXXXXXXXXXXX





# Claudine



## LEGENDARY

FABRICS DESIGNED BY PAT BRAVO

### BOHO SOUL



LGD-49700  
STITCHED ANTHOMANIA BOHO



LGD-49701  
MARQUETERIE BOHO



LGD-49702  
WONDERLUST BOHO



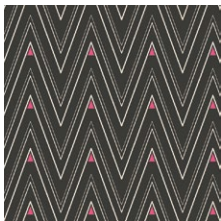
LGD-49703  
BRIT BOUTIQUE BOHO



LGD-49704  
FEMME METALE BOHO



LGD-49705  
MEADOW BOHO



LGD-49706  
COLLAR ENDS BOHO



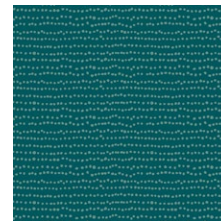
LGD-49707  
COLLAR ENDS SOUL



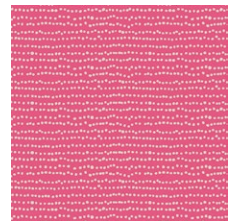
LGD-49708  
TRINKETS BOHO



LGD-49709  
TRINKETS SOUL

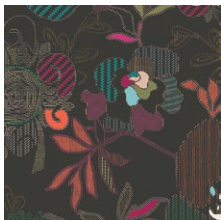


LGD-49710  
FLECKS BOHO



LGD-49711  
FLECKS SOUL

### BOLD DREAMS



LGD-39700  
STITCHED ANTHOMANIA BOLD



LGD-39701  
MARQUETERIE BOLD



LGD-39702  
WONDERLUST BOLD



LGD-39703  
BRIT BOUTIQUE BOLD



LGD-39704  
FEMME METALE BOLD



LGD-39705  
MEADOW BOLD



LGD-39706  
COLLAR ENDS BOLD



LGD-39707  
COLLAR ENDS DREAMS



LGD-39708  
TRINKETS BOLD



LGD-39709  
TRINKETS DREAMS



LGD-39710  
FLECKS BOLD



LGD-39711  
FLECKS DREAMS



© 2018 Courtesy of Art Gallery Quilts LLC. All Rights Reserved.



# Claudine

FINISHED SIZE | 10½" x 6½"

## FABRIC REQUIREMENTS

Fabric **A** LGD-39701 F8  
Fabric **B** DEN-S-2000 ¼ yd

BACKING FABRIC  
DEN-S-2000 (*Included*)

### Additional Material

Steam-a-Seam double side fusible tape

## CUTTING DIRECTIONS

¼" seam allowances are included.  
WOF means width of fabric.

- One (1) fussy cut flower print from Fabric **A**
- Two (2) 11" x 7" rectangle from Fabric **B**

## CONSTRUCTION

Sew all rights sides together with ¼" seam allowance.  
HST means Half Square Triangles.

- Take a piece of Steam-a-seam double side fusible tape and place it on the wrong side of Fabric **A**.
- Press and Steam
- Fussy cut the flower print
- Take Fabric **B** 11" x 7" rectangle piece and place the flower piece, removing the paper from the fusible tape.
- Press and Steam
- Trim Excess Fabric



DIAGRAM 1

### Zipper Construction

Insert your zipper foot-

- Take lining and front clutch and sandwich them inbetween your 12" zipper.
- Using a zipper foot sew as close to the zipper teeth as possible.
- Sew the two pieces of fabric with right sides together with the zipper sandwiched inbetween the two pieces of fabric (Diagram 2.1 and 2.2)
- Press fabric away from zipper and edge stitch the seam allowance to the lining sewing as close the edge as possible..
- Repeat process for the other side of the zipper using your other lining piece and back clutch.

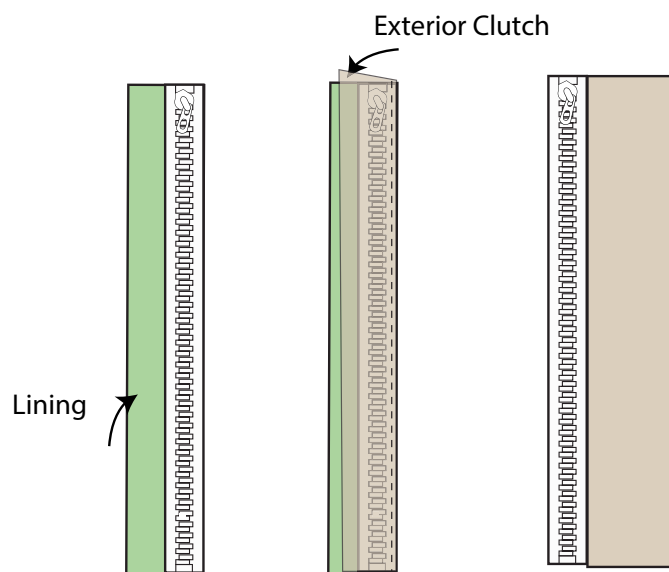


DIAGRAM 2.1

DIAGRAM 2.2

DIAGRAM 2.3

- Unzip zipper. Take the two fronts of the clutch and pin right sides together.
- Take the lining pieces and pin right sides together.
- Now you can sew all the way around leaving the bottom portion of the lining of the clutch, that way you don't damage your applique.
- Pull right side of the fabric through the unsewn portion. Hand stitch or machine stitch unsewn portion closed.
- Press and enjoy!!!



[artgalleryfabrics.com](http://artgalleryfabrics.com)

NOTE: While all possible care has been taken to ensure the accuracy of this pattern, We are not responsible for printing errors or the way in which individual work varies. Please read instructions carefully before starting the construction of this quilt. If desired, wash and iron your fabrics before starting to cut.

© 2018 Courtesy of Art Gallery Quilts LLC. All Rights Reserved.