

featuring SONATA COLLECTION BY AMY SINIBALDI

Aleatory



ANGLES

FREE PATTERN

XXXXXXXXXXXXXXXXXXXXXXXXXXXX

A DIVISION OF AGF

Aleatory

QUILT DESIGNED BY AMY SINIBALDI



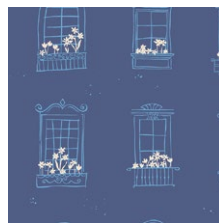
FABRICS DESIGNED BY AMY SINIBALDI



BEETHOVEN



SNT-33104
SINFONIE IN DANUBE



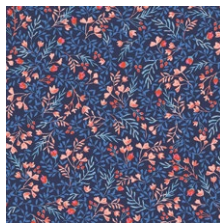
SNT-33107
VIENNA MOONLIGHT



SNT-33101
PASTORAL CRESCENDO



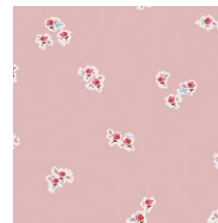
SNT-33100
EIDELWEISS JOY



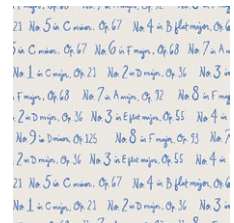
SNT-33103
FLORAL NO. 9 BOLD



SNT-33108
INK LIGHT

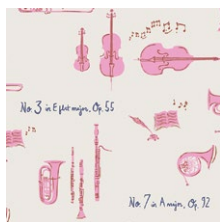


SNT-33102
JOSEPHINE POETIC



SNT-33106
1812

LUDWIG



SNT-23104
SINFONIE IN MELODY



SNT-23107
VIENNA ROSEBEAM



SNT-23101
PASTORAL MAGENTA



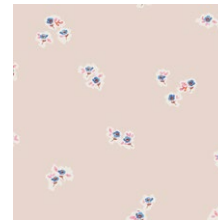
SNT-23100
EIDELWEISS ODE



SNT-23103
FLORAL NO. 9 SHARP



SNT-23108
INK THUNDER



SNT-23102
JOSEPHINE CLASSIC



SNT-23105
OCTET



FEEL THE DIFFERENCE © 2018 Courtesy of Art Gallery Quilts LLC. All Rights Reserved.

Aleatory

FINISHED SIZE | 39" x 45"

FABRIC REQUIREMENTS

Fabric A	SNT-23101	¼ yd.
Fabric B	SNT-33100	¼ yd.
Fabric C	SNT-23103	¼ yd.
Fabric D	SNT-23104	¼ yd.
Fabric E	SNT-33102	½ yd.
Fabric F	SNT-33108	¼ yd.
Fabric G	SNT-23102	¼ yd.
Fabric H	SNT-23100	¼ yd.
Fabric I	SNT-33107	¼ yd.
Fabric J	PE-471	¼ yd.
Fabric K	PE-420	¼ yd.
Fabric L	FE-518	¼ yd.
Fabric M	PE-477	¼ yd.
Fabric N	DEN-S-2004	1 ½ yd.

BACKING FABRIC

SNT-33106 1 ½ yds. *(Suggested)*

BINDING FABRIC

SNT-33102 (Fabric **E**) *(Included)*

CUTTING PREPERATIONS

Fabric **A**

- Two (2) Squares of 7 ¾ x 7 ¾

Fabric **B**

- Three (4) Squares of 7 ¾ x 7 ¾
- One (1) Square of 3 ⅞ x 3 ⅞

Fabric **C**

- Two (2) Squares of 7 ¾ x 7 ¾

Fabric **D**

- Two (2) Squares of 7 ¾ x 7 ¾

Fabric **E**

- Three (3) Squares of 7 ¾ x 7 ¾

Fabric **F**

- Two (2) Squares of 7 ¾ x 7 ¾
- One (1) Squares of 3 ⅞ x 3 ⅞

Fabric **G**

- Two (2) Squares of 7 ¾ x 7 ¾
- One (2) Squares of 3 ⅞ x 3 ⅞

Fabric **H**

- Two (2) Squares of 7 ¾ x 7 ¾
- Two (2) Squares of 3 ⅞ x 3 ⅞

Fabric **I**

- Three (3) Squares of 7 ¾ x 7 ¾

Fabric **J**

- Two (2) Squares of 7 ¾ x 7 ¾

Fabric **K**

- Two (2) Squares of 7 ¾ x 7 ¾

Fabric **L**

- One (1) Squares of 7 ¾ x 7 ¾
- One (1) Squares of 3 ⅞ x 3 ⅞

Fabric **M**

- Three (3) Squares of 7 ¾ x 7 ¾

Fabric **N**

- Twenty Nine (30) Squares of 7 ¾ x 7 ¾
- Five (7) Squares of 3 ⅞ x 3 ⅞

CONSTRUCTION

Sew all rights sides together with $\frac{1}{4}$ " seam allowance.

For this quilt we will be needing only HST (Half Square Triangles) and thirteen different combinations.

To maximize our time we will be applying the magic 8 technique.

Magic 8 technique:

For this sample we will be using the fabrics for our first combination (Fabric A and Fabric N):

Take a Squares of $7\frac{3}{4} \times 7\frac{3}{4}$ from desired fabric .

Place the two squares on top of each other, with right sides together. Then, on one of the fabrics,

draw two diagonal lines corner to corner

Next, you'll stitch a total of four lines: one on each side of each diagonal line, $\frac{1}{4}$ " away from the line

- Place the two squares on top of each other, with right sides together

Fabric A



Fabric N



DIAGRAM 1

- On one of the fabrics, draw two diagonal lines corner to corner and sew $\frac{1}{4}$ inch seam on both sides of the marked diagonal lines.



DIAGRAM 2

- Using the rotary blade or scissors cut the square into eights as pictured above. You will cut a horizontal line, vertical line, and on both drawn diagonal lines.

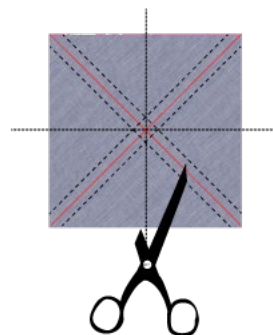


DIAGRAM 3

- Now that you're done with your cuts, you can separate the cut pieces, and open them up to reveal your perfect half-square triangles! Press the seams to the darker side and you're ready to use them in a project



DIAGRAM 4

- As we said before we will need thirteen different HST combinations, see diagram below to get the amount of HST per fabric combination.

Combination 1



A-N
13 HST

Combination 2



B-N
34 HST

Combination 3



C-N
15 HST

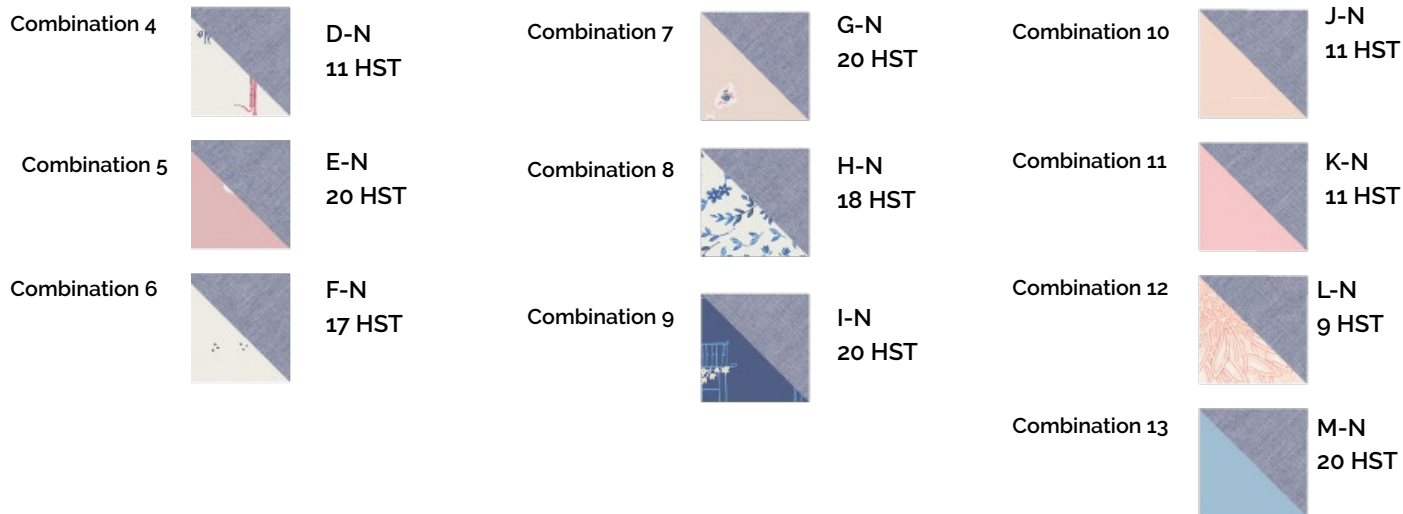


DIAGRAM 5

- Once you have all the HST Combinations sewn, we can start sewing the HST together and arrange them in rows as showing in diagram below. Some rows like Row 8, 10, 12, 13, 14, 15 have two different HST Combinations.

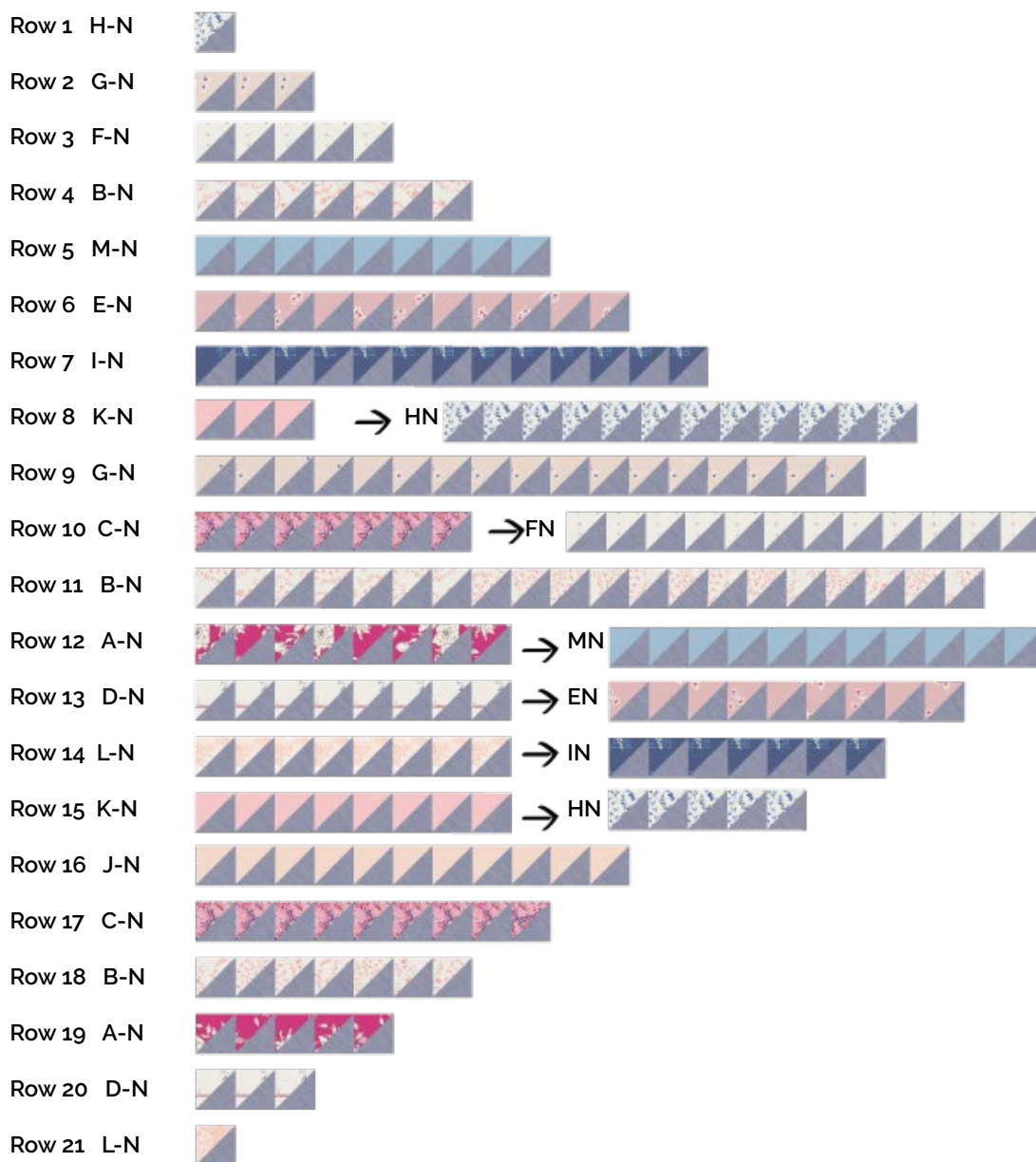


DIAGRAM 6

- Arrange the rows as showing in diagram below, and sew. Rows together.

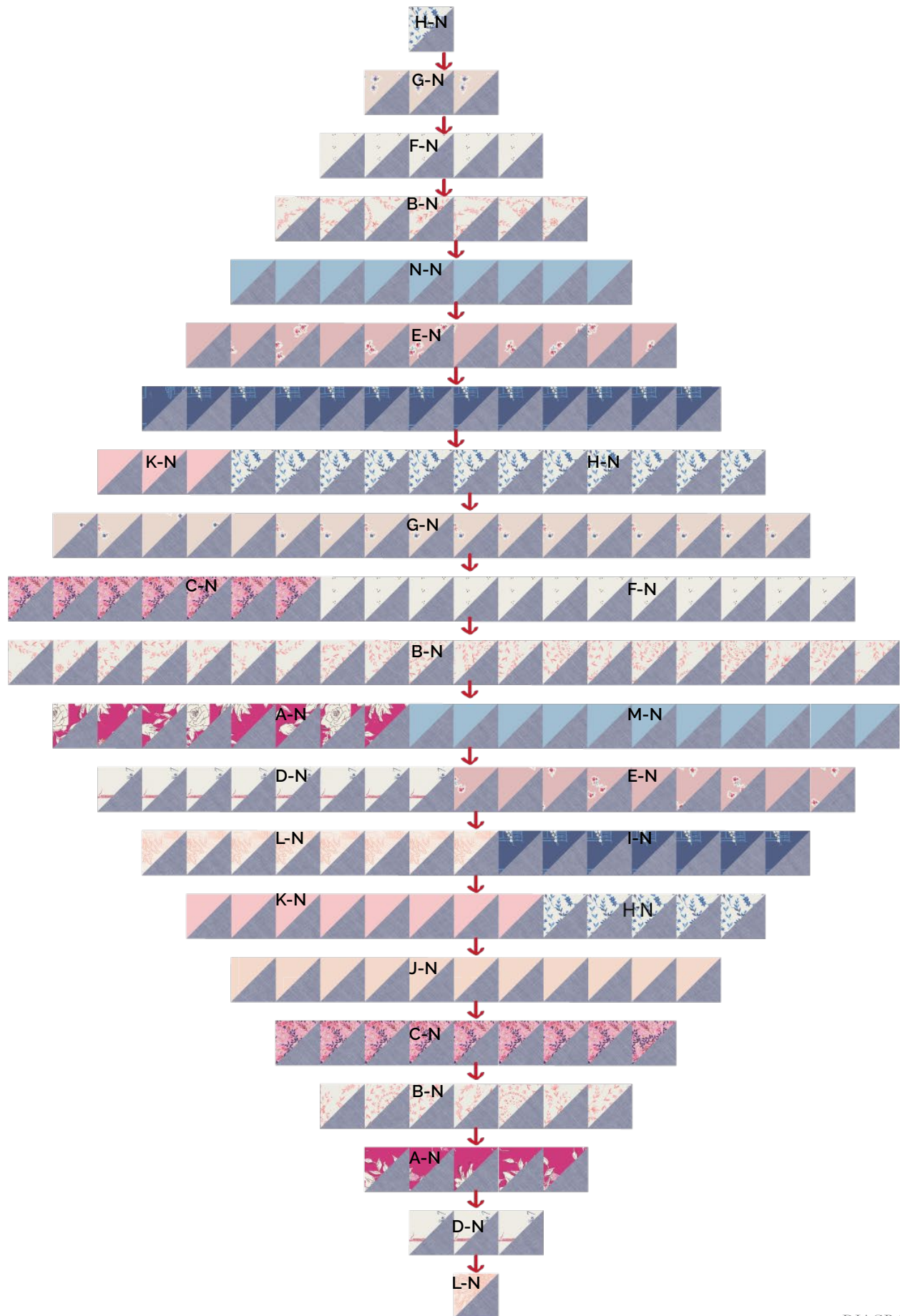
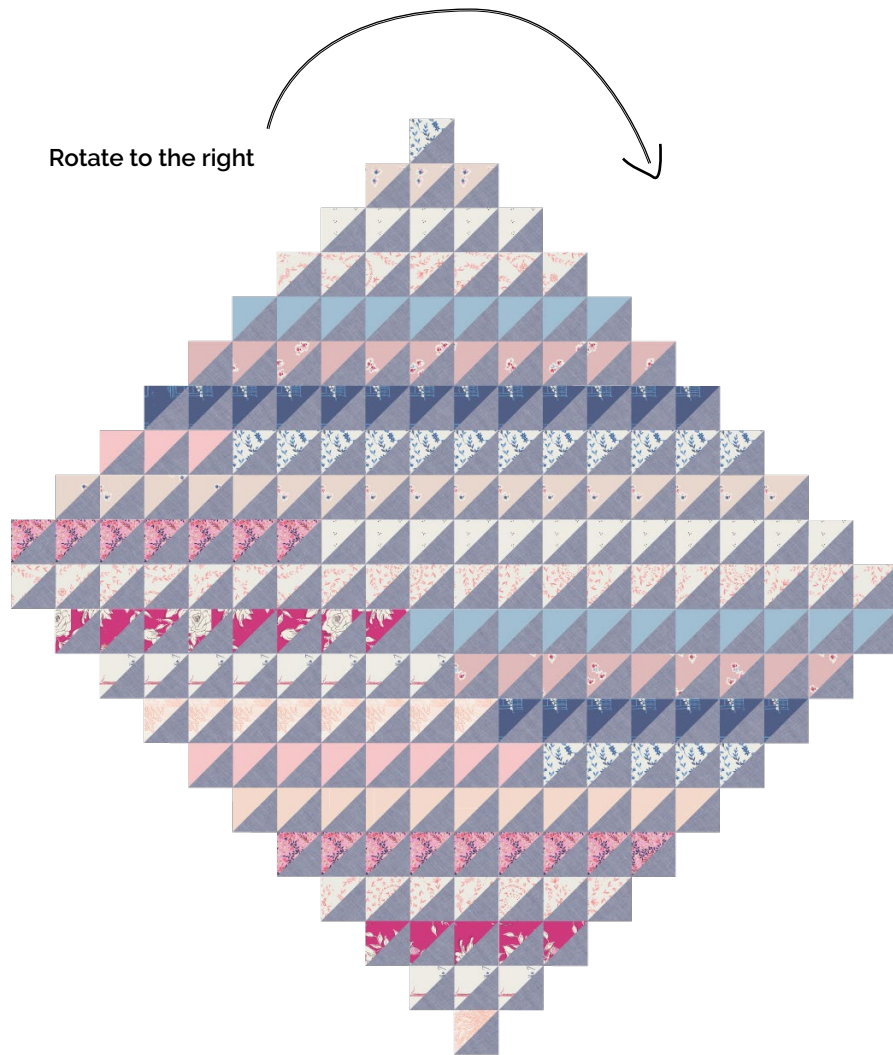


DIAGRAM 7

- The quilt will look like this after you sew rows together, now rotate the quilt to the right.
- Trim to 39" x 45"



Trim to 39" x 45"

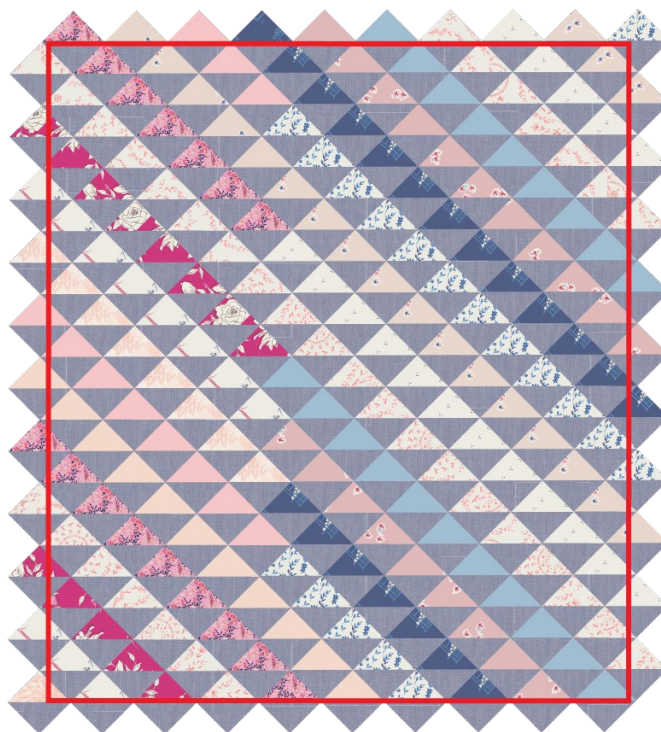




DIAGRAM 8

QUILT ASSEMBLY

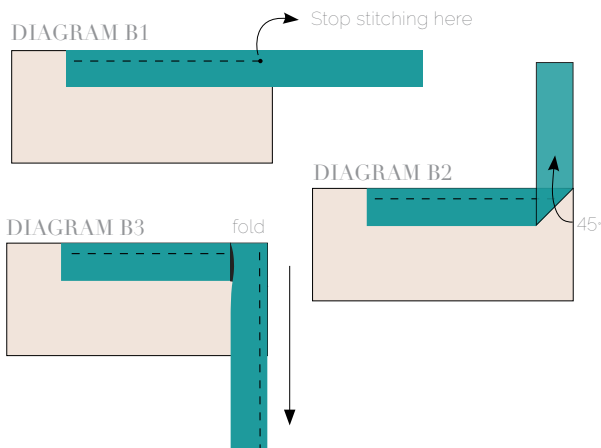
Sew rights sides together

- Place BACKING FABRIC on a large surface wrong side up. Stretch it with masking tape against that surface.
- Place BATTING on top of backing fabric.
- Place TOP on top of the batting with right side facing up. Smooth away wrinkles using your hands.
- Pin all layers together and baste with basting thread, using long stitches. You can also use safety pins to join the layers.
- Machine or hand quilt starting at the center and working towards the corners. Remember that quilting motifs are a matter of personal preference. Have fun choosing yours!
- After you finished, trim excess of any fabric or batting, squaring the quilt to proceed to bind it.

BINDING

Sew rights sides together.

- Cut enough strips 1 ½" wide by the width of the fabric L to make a final strip 178" long. Start sewing the binding strip in the middle of one of the sides of the quilt, placing the strip right side down and leaving an approximated 5" tail. Sew with ¼" seam allowance (using straight stitch), aligning the strip's raw edge with the quilt top's raw edge.
- Stop stitching ¼" before the edge of the quilt (DIAGRAM B 1). Clip the threads. Remove the quilt from under the machine presser foot. Fold the strip in a motion of 45° and upward, pressing with your fingers (DIAGRAM B2). Hold this fold with your finger, bring the strip down in line with the next edge, making a horizontal fold that aligns with the top edge of the quilt (DIAGRAM B3). Start sewing at ¼" of the border, stitching all the layers. Do the same in the four corners of the quilt.
- Stop stitching before you reach the last 5 or 6 inches. Cut the threads and remove the quilt from under the machine presser foot. Lay the loose ends of the binding flat along the quilt edge, folding the ends back on themselves where they meet. Press them together to form a crease. Using this crease as the stitching line, sew the two open ends of the binding with right sides together (you can help yourself marking with a pencil if the crease is difficult to see).
- Trim seam to ¼" and press open. Complete the sewing. Turn binding to back of the quilt, turn raw edge inside and stitch by hand using blind stitch.



XXXXXXXXXXXXXXXXXXXXXXXXXXXXXXXXXXXX

Congratulations
& enjoy

XXXXXXXXXXXXXXXXXXXXXXXXXXXXXXXXXXXX



artgalleryfabrics.com

NOTE: While all possible care has been taken to ensure the accuracy of this pattern, We are not responsible for printing errors or the way in which individual work varies. Please read instructions carefully before starting the construction of this quilt. If desired, wash and iron your fabrics before starting to cut.

© 2018 Courtesy of Art Gallery Quilts LLC. All Rights Reserved.