

The Deer's Alley



FUSIONS

by AGF

FREE PATTERN

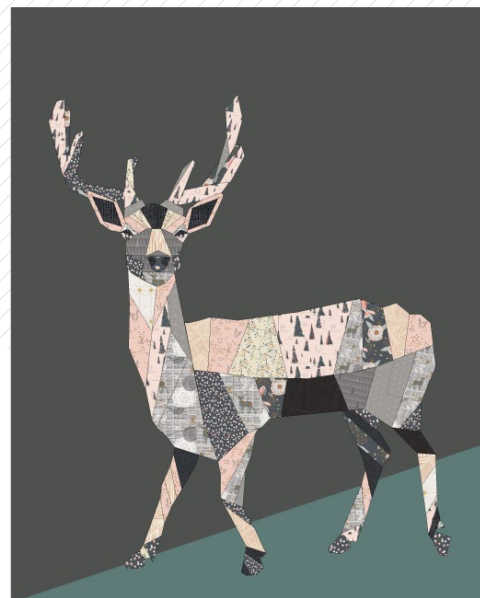
XXXXXXXXXXXXXXXXXXXXXXXXXXXX

The Deer's Alley

QUILT DESIGNED BY AGFstudio

Sparkler FUSION

FABRICS DESIGNED BY AGFstudio



FUS-SK-1303
EVERLASTING BLOOMS SPARKLER



FUS-SK-1304
FROM WITHIN SPARKLER



FUS-SK-1308
STARBRIGHT SPARKLER



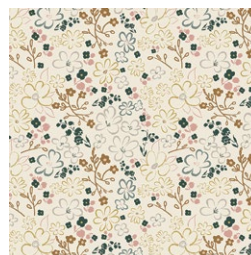
FUS-SK-1306
TROUVILLE ROUTES SPARKLER



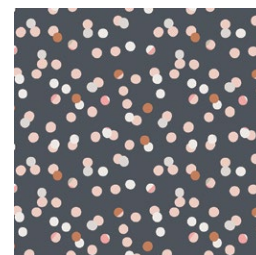
FUS-SK-1305
PINETREE SPARKLER



FUS-SK-1300
SPRINKLED PEONIES SPARKLER



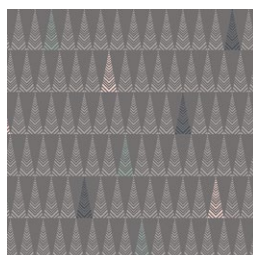
FUS-SK-1301
LITEN DITSY SPARKLER



FUS-SK-1307
CHADS SPARKLER



FUS-SK-1309
DOILAND GLOSS SPARKLER



FUS-SK-1302
TREE FARM SPARKLER



The Deer's Alley

FINISHED SIZE | 80" x 100"

FABRIC REQUIREMENTS

Fabric A	FUS-SK-1305	5/8 yd.
Fabric B	FUS-SK-1300	1/2 yd.
Fabric C	FUS-SK-1307	1/2 yd.
Fabric D	PRE-814	1/2 yd.
Fabric E	FUS-SK-1301	3/8 yd.
Fabric F	FUS-SK-1304	1/4 yd.
Fabric G	FUS-SK-1308	1 yd.
Fabric H	FUS-SK-1302	1/4 yd.
Fabric I	FUS-SK-1309	3/4 yd.
Fabric J	FUS-SK-1306	3/8 yd.
Fabric K	DEN-S-2000	3/8 yd.
Fabric L	PE-452	2 yd.
Fabric M	PE-430	6 yd.

BACKING FABRIC

FUS-SK-1307 6 yds. *(Suggested)*

BINDING FABRIC

FUS-SK-1308 (Fabric **G**) *(Included)*

CUTTING DIRECTIONS

We suggest to use a EPP paper

- Template A10, A9, A2, B2, B4, B8, B9, E3, F3, **I4**, J4, L7, K4 from fabric **A**
- Template A11, A6, B5, B7, J14, J6, L3, K6 from fabric **B**
- Template A8, A7, A5, A4, H2, H4, E4, F4, H7a, J16, N8, N6, M4, M8, J10, L1, L8, K7 from fabric **C**
- A1, B1, B3, B6, **I3**, J11 from fabric **D**
- Template A3, G3, G5, J3, N7 from fabric **E**
- Template **I1**, K3 from fabric **F**
- Template L5, J8, M1, N2, N4, J2, **I2**, **I5**, C4, C3, C2, C5, G1, G7, D2, D3, D4, D5 from fabric **G**
- Template H1, H5, H7, J12 from fabric **H**

XXXXXXXXXXXXXXXXXXXXXXXXXXXXXXXXXXXX

- Template E1, F1, H3, I6, **I7**, **I8**, J15, M2, J5, J9, L6 from fabric **I**
- Template K2, J7, J1, M5, N5, N3, H6, G2, G6 from fabric **J**
- Template G4, C1, D1, E2, F2, H7b, H7c, N1, M6, M7, M9, J13, L2, L4, K1, K5 from fabric **K**

CONSTRUCTION

Sew all rights sides together with 1/4" seam allowance.

- We divided the deer in nine sections, A, B, C, D, E, F, G, H, I, J, K, M, and N. Each section has a subsection.
- Left antlers are section A.
- Right antlers are section B.
- Left ear is section C.
- Right ear is section D.
- Left eye is section E.
- Right eye is section F.
- Forehead is section G.
- Face is section H.
- Neck is section I
- Body is section J.
- Front legs and hooves are section N & M.
- Posterior Legs and hooves are section L & K

Note:

- Some pieces have a black circle, which means that they need to be attached to another piece in order to complete the template.

See diagram 1

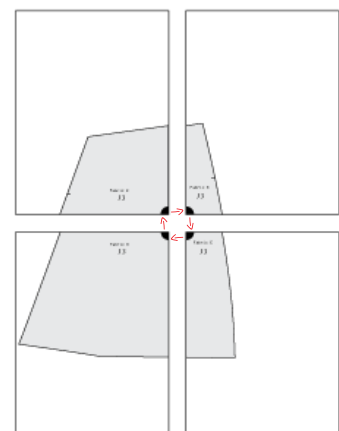


DIAGRAM 1

- With tape attach pieces together and cut template as shown on diagram below

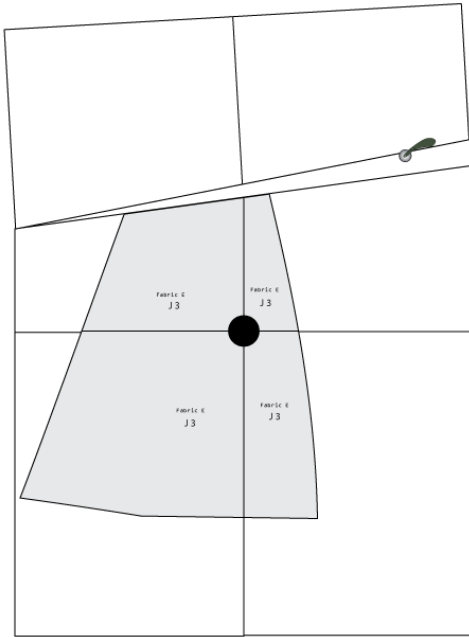


DIAGRAM 2

- Remember that each template has a section letter and a subsection to complete the pattern, it also has the letter of the fabric written on the pattern.

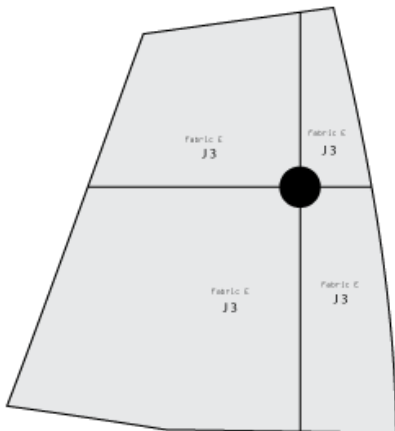


DIAGRAM 3

- After all the pieces were cut and glue you will end up with one hundred and ten (110) templates.
- Separate templates by sections and start cutting the fabric $\frac{1}{4}$ to $\frac{3}{8}$ of an inch more all around each template.

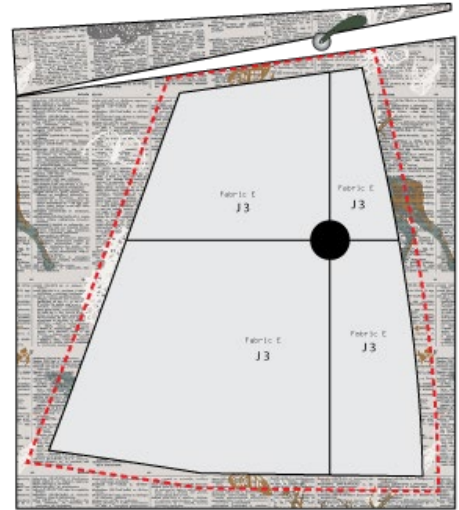


DIAGRAM 4

- Fold fabric and glue baste all around the edges of the pattern, repeat the same process until you have all the pieces glued with designated fabric.

We suggest that you spray fabrics with starch before glue.

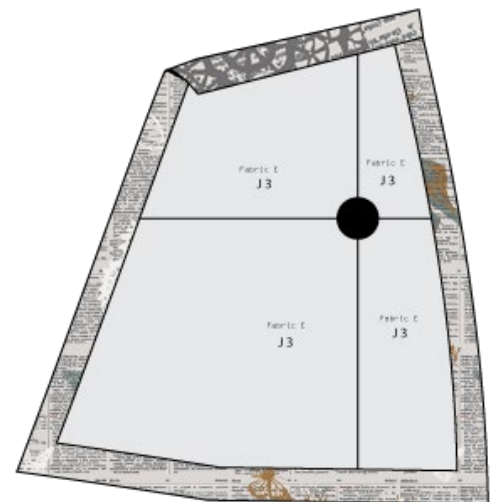


DIAGRAM 5

- Section A is the Left Antler, Which has templates. A1, A2, A3, A4, A5, A6, A7, A8, A9, A10. In order to sew pieces together do not remove the paper, and use a zig zag stitch. You can remove the paper at the end when everything is sewn.



DIAGRAM 6

- Section B is the right Antler, Which has templates. B1, B2, B3, B4, B5, B6, B7, B8, B9.

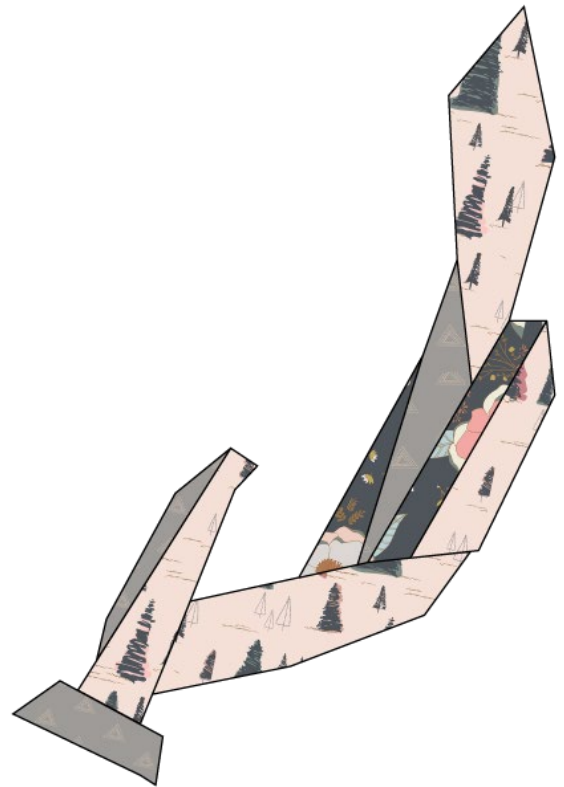


DIAGRAM 7

- Section C is the left ear, Which has templates. C1, C2, C3, C4, C5.

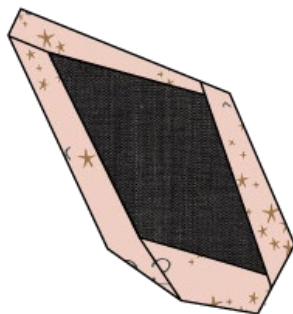


DIAGRAM 8

- Section D is the right ear, Which has templates. D1, D2, D3, D4, D5.

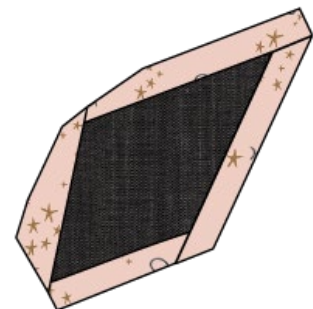


DIAGRAM 9

- Section E is the Left eye, Which has templates. E1, E2, E3, E4., this part will be sewn as appliqué.

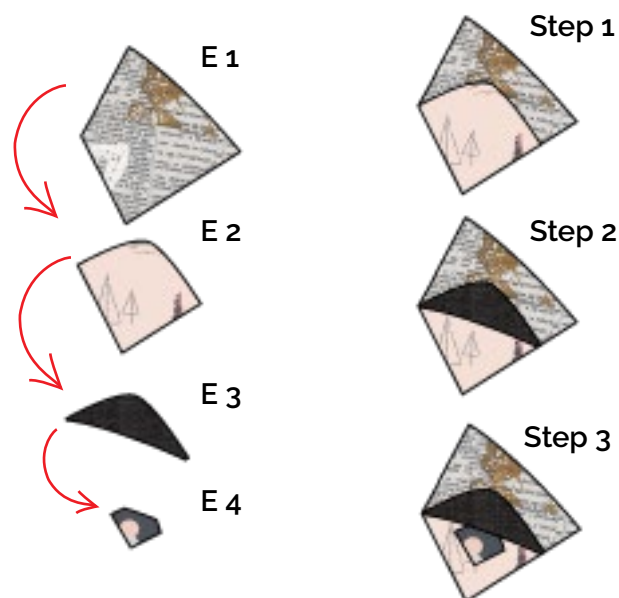


DIAGRAM 10

- Section G which is the forehead, has templates. G1, G2, G3, G4, G5, G6, G7.



DIAGRAM 12

- Section F is the right eye, Which has templates. F1, F2, F3, F4, . this part will be sewn as appliqué.

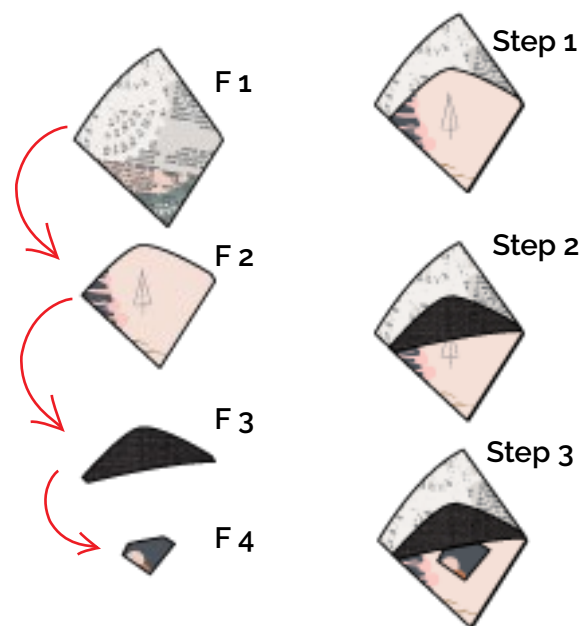


DIAGRAM 11

- Section H has templates. H1, H2, H3, H4, H5, H6, H7, and subsections (H7a, H7b, H7c) **H7b** and **H7c** are going to be sewn on H7a and then centered on H7 and sew as an appliqué. See diagram 13

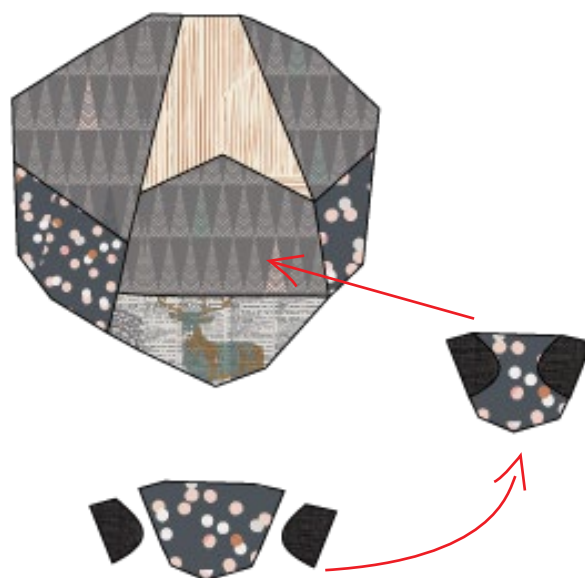


DIAGRAM 13

- Assemble the head and antlers together with zigzag stitch.



DIAGRAM 14

- Section I is the neck section and has templates. I1, I2, I3, I4, I5, I6, I7, I8,

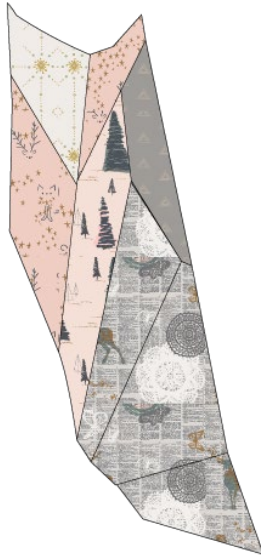


DIAGRAM 15

- Section J, has templates. J1, J2, J3, J4, J5, J6, J7, J8, J9, J10, J11, J12, J13, J14, J15, J16,



DIAGRAM 16

- Section K, is one of the posterior legs and has templates. K1, K2, K3, K4, K5, K6, K7.

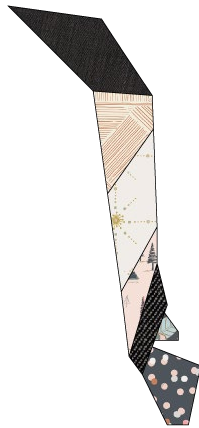


DIAGRAM 17

- Section L, is one of the posterior legs and has templates. L1, L2, L3, L4, L5, L6, L7, L8



DIAGRAM 18

- Section M, is one of the front legs and is made out of templates. M1, M2, M3, M4, M5, M6, M7, M8, M9



DIAGRAM 19

- Section N, is the front legs and is made out of templates. N1, N2, N3, N4, N5, N6, N7, N8.



DIAGRAM 20

- Assemble sections I and J Together.

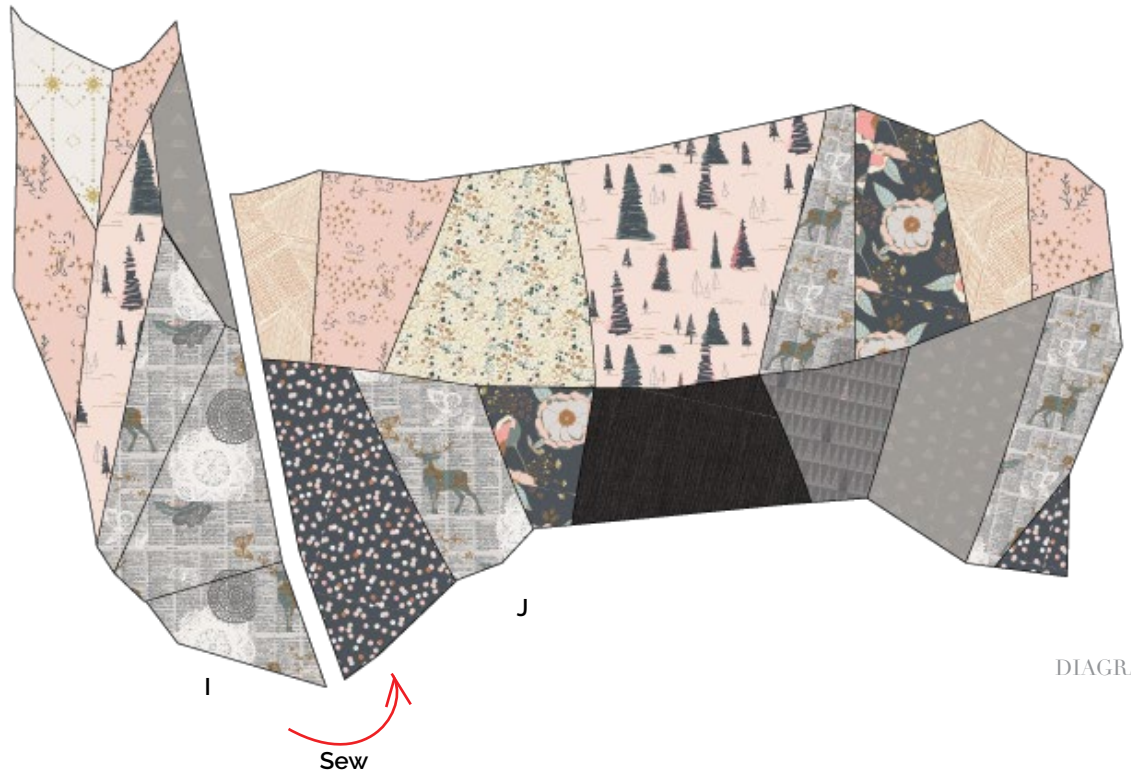


DIAGRAM 21

- Attach sections K, L, M, N to I and J. See Diagram 22

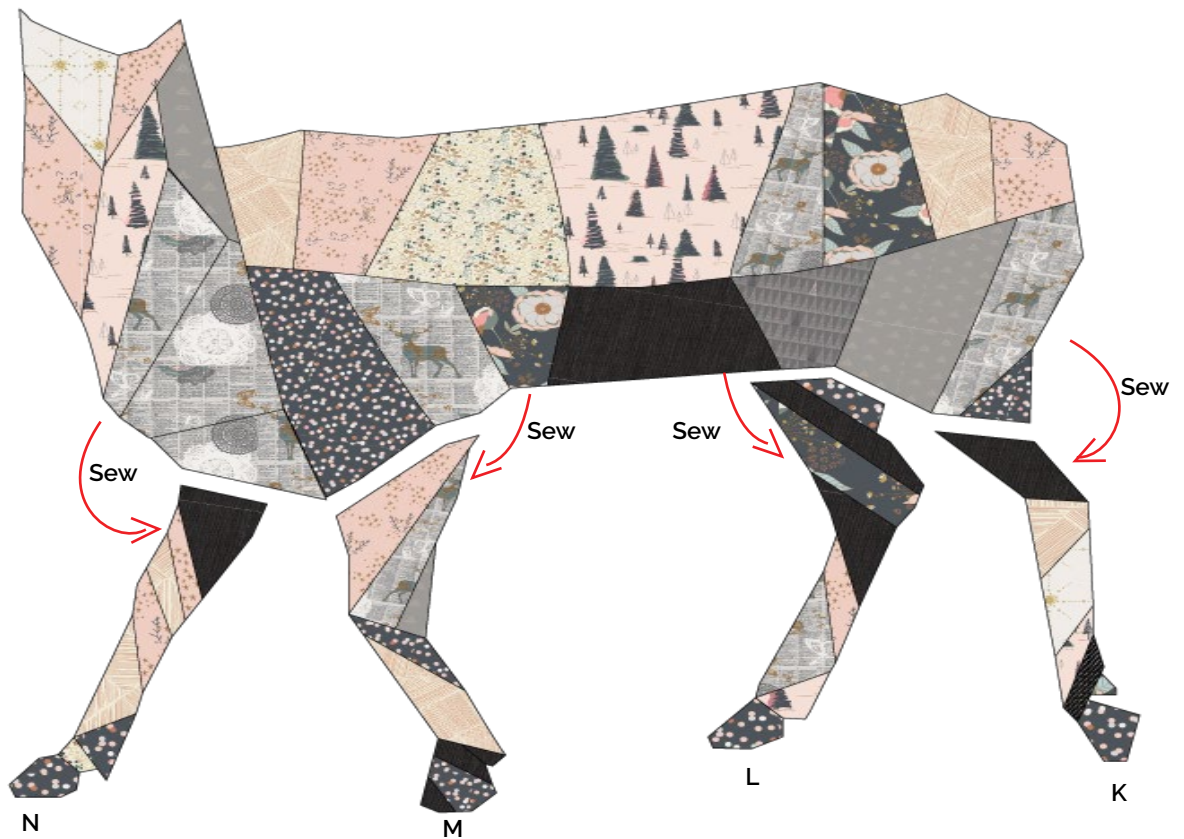


DIAGRAM 22

- sew the head to the body with zigzag stitch

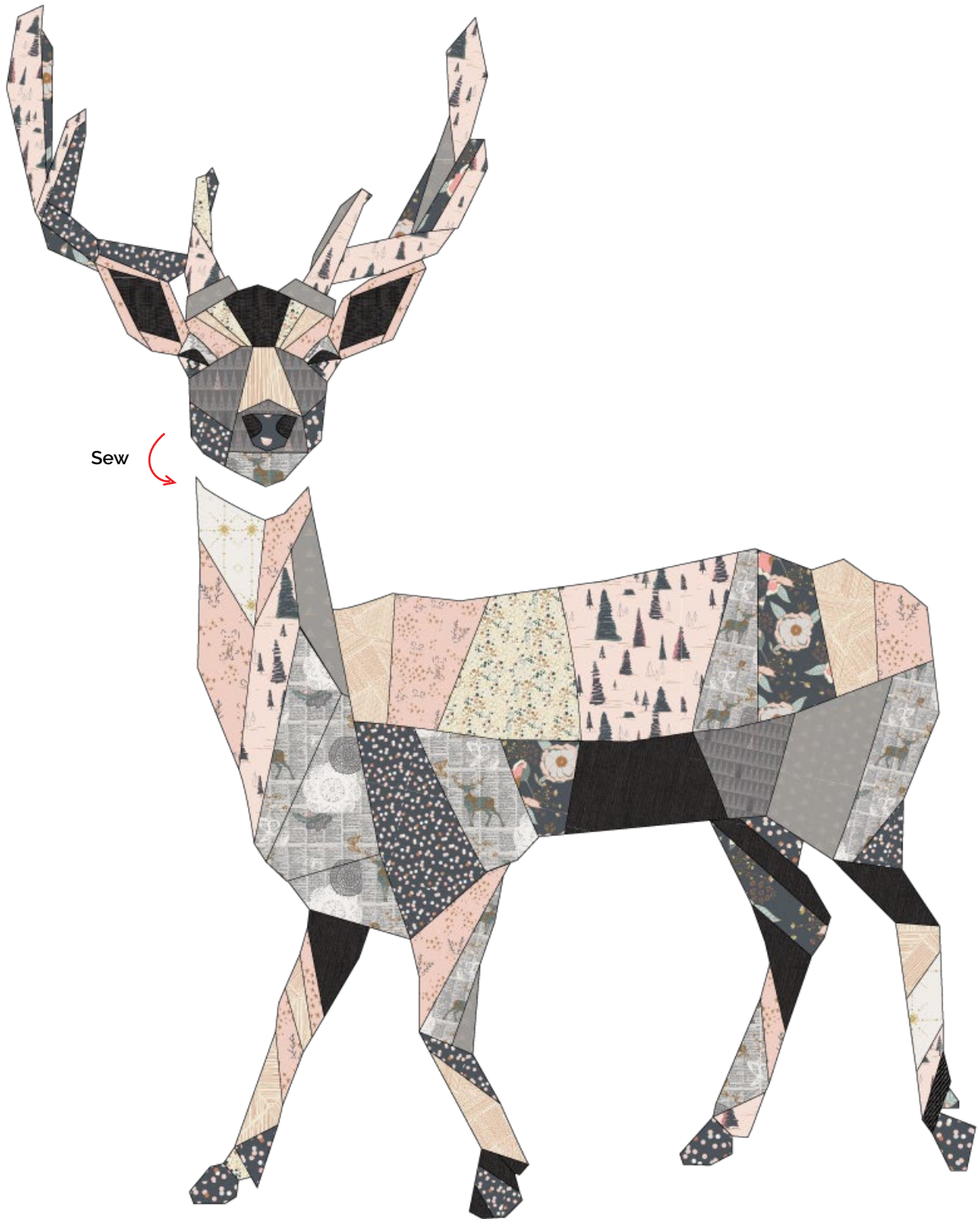


DIAGRAM 23

ASSEMBLING THE TOP

- For the background of the quilt. Grab 6 yards of fabric **M** and cut it in half. You will have two rectangles of WOF x 3 yards sew together.

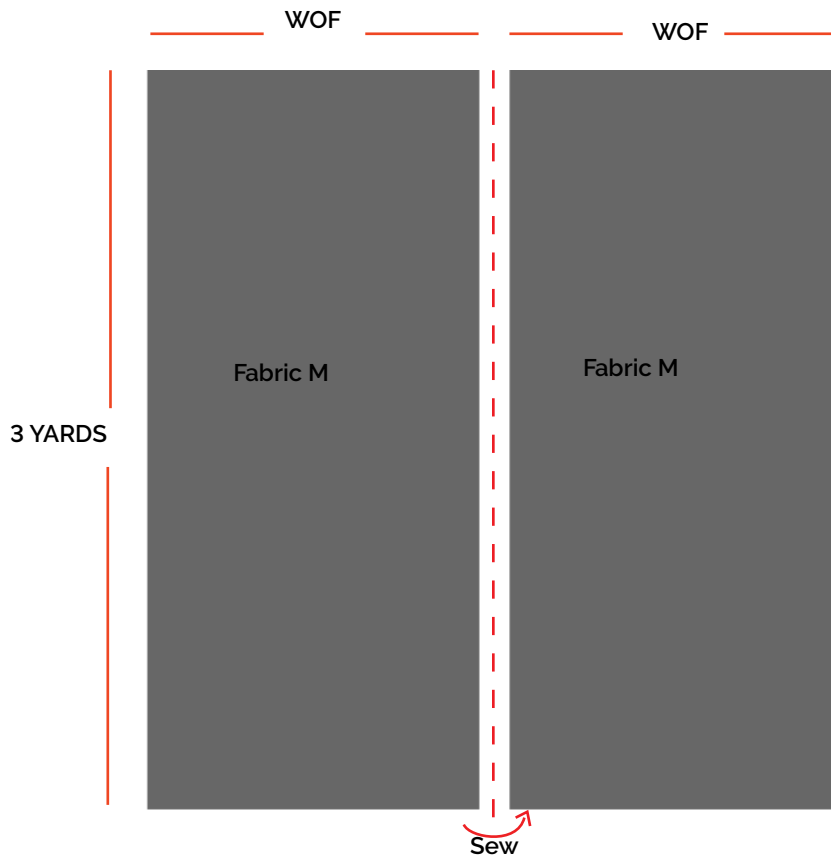


DIAGRAM 24

- Lay down the sewn piece and measure 73 inches down, by the right side of the quilt top, and cut a straight diagonal line all the way to the left bottom corner. Do not throw the bottom piece; we will be using the bottom shape as a template to cut an exact same piece with fabric **L**. Referred to diagram 25 and 26

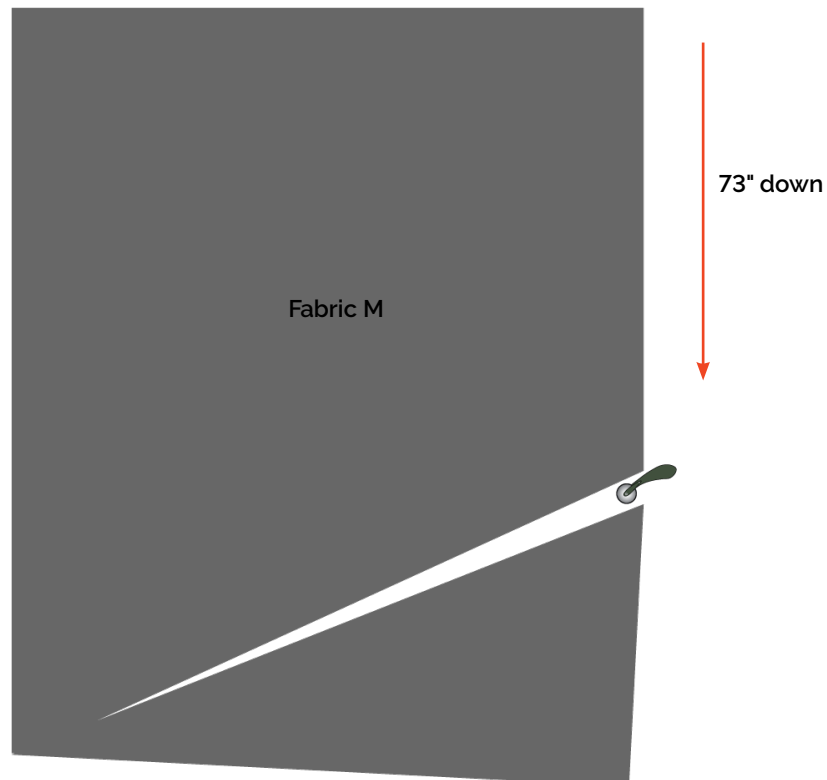


DIAGRAM 25

- In this step use the triangle previously cut to use it as a template to cut an exact same shape with fabric **L**.

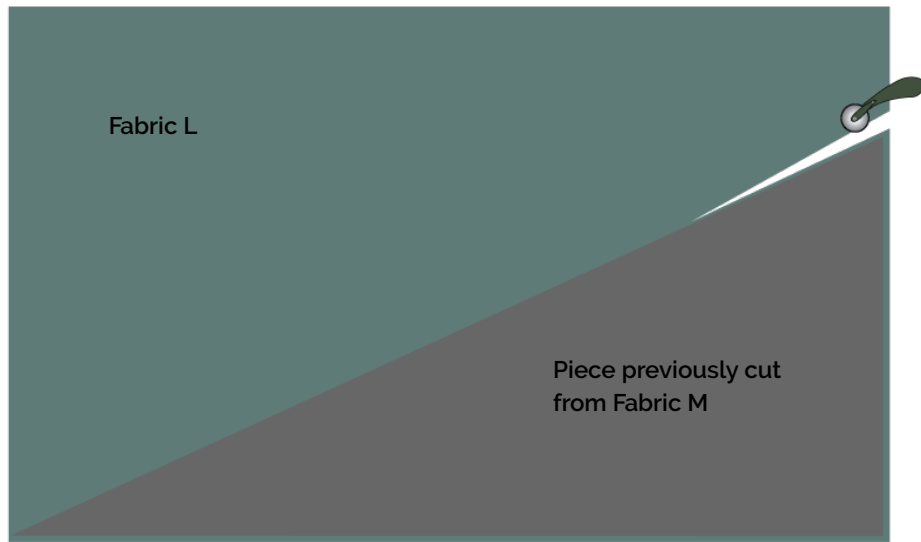


DIAGRAM 26

- Now sew together the two pieces from fabric **M** and fabric **L** as shown on diagram 27

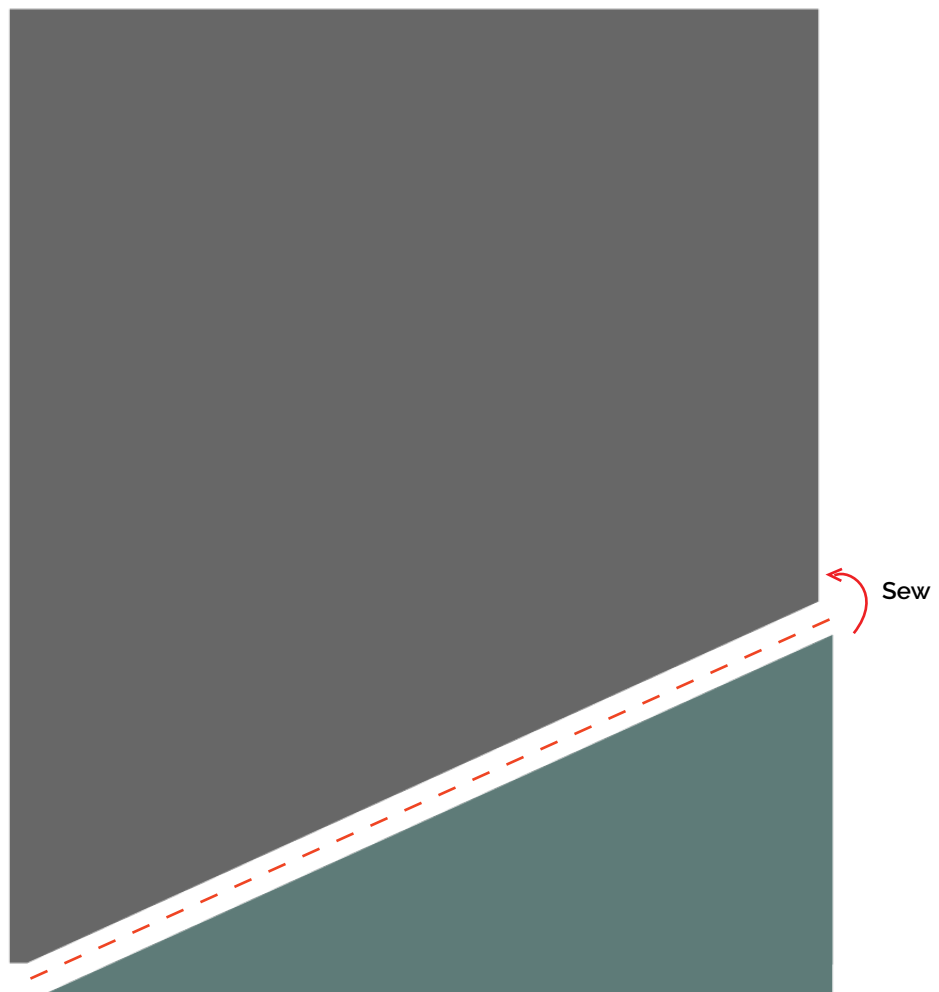


DIAGRAM 27

- Trim excess to 80 x 100'

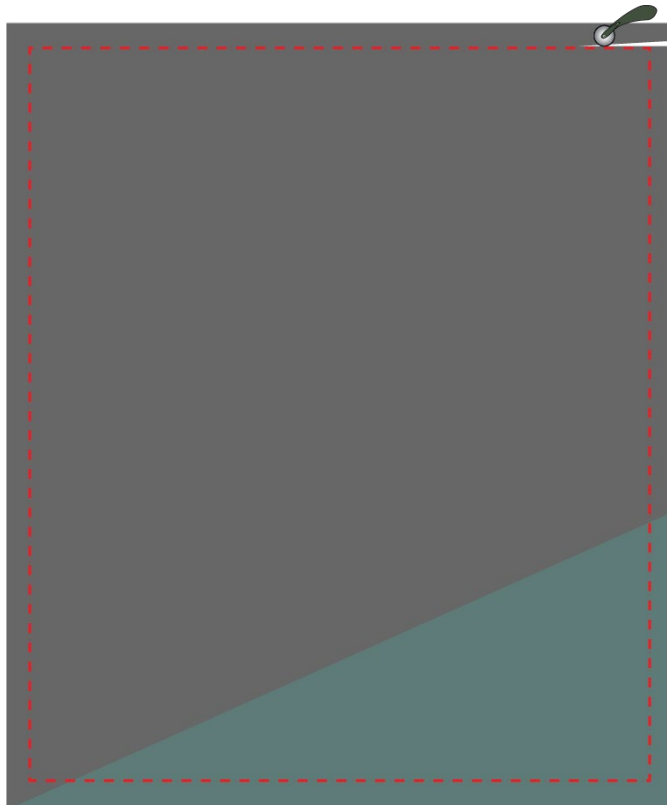


DIAGRAM 28

- Place the reindeer on top of quilt top and zig zag stitch the outline of the reindeer to attach the deer to the quilt top.



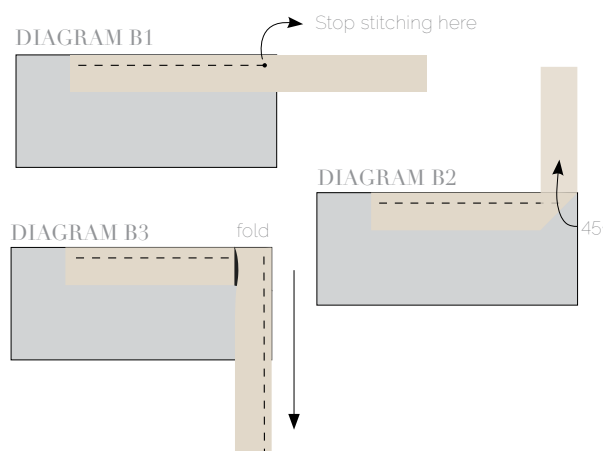
DIAGRAM 28

QUILT ASSEMBLY

Sew rights sides together.

- Place BACKING FABRIC on a large surface wrong side up. Stretch it with masking tape against that surface.
- Place BATTING on top of backing fabric.
- Place TOP on top of the batting with right side facing up. Smooth away wrinkles using your hands.
- Pin all layers together and baste with basting thread, using long stitches. You can also use safety pins to join the layers.
- Machine or hand quilt starting at the center and working towards the corners. Remember that quilting motifs are a matter of personal preference. Have fun choosing yours!
- After you finished, trim excess of any fabric or batting, squaring the quilt to proceed to bind it.

- Stop stitching before you reach the last 5 or 6 inches. Cut the threads and remove the quilt from under the machine presser foot. Lay the loose ends of the binding flat along the quilt edge, folding the ends back on themselves where they meet. Press them together to form a crease. Using this crease as the stitching line, sew the two open ends of the binding with right sides together (you can help yourself marking with a pencil if the crease is difficult to see).
- Trim seam to $\frac{1}{4}$ " and press open. Complete the sewing. Turn binding to back of the quilt, turn raw edge inside and stitch by hand using blind stitch.



BINDING

Sew rights sides together.

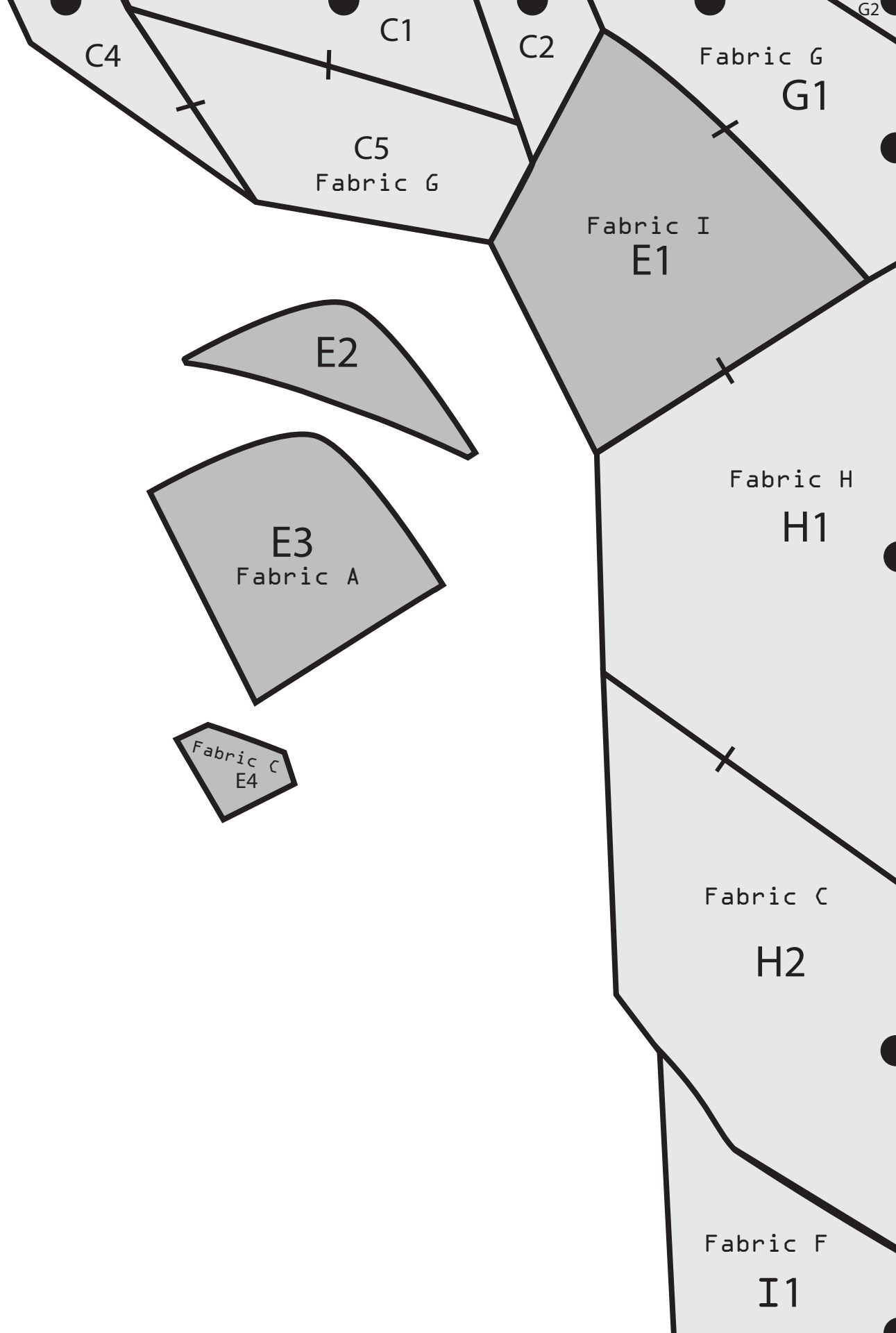
- Cut nine (9) strips $1\frac{1}{2}$ " wide by the width of the fabric **G** to make a final strip 370" Long. Start sewing the binding strip in the middle of one of the sides of the quilt, placing the strip right side down and leaving an approximated 5" tail. Sew with $\frac{1}{4}$ " seam allowance (using straight stitch), aligning the strip's raw edge with the quilt top's raw edge.
- Stop stitching $\frac{1}{4}$ " before the edge of the quilt (**DIAGRAM B 1**). Clip the threads. Remove the quilt from under the machine presser foot. Fold the strip in a motion of 45° and upward, pressing with your fingers (**DIAGRAM B2**). Hold this fold with your finger, bring the strip down in line with the next edge, making a horizontal fold that aligns with the top edge of the quilt (**DIAGRAM B3**). Start sewing at $\frac{1}{4}$ " of the border, stitching all the layers. Do the same in the four corners of the quilt.

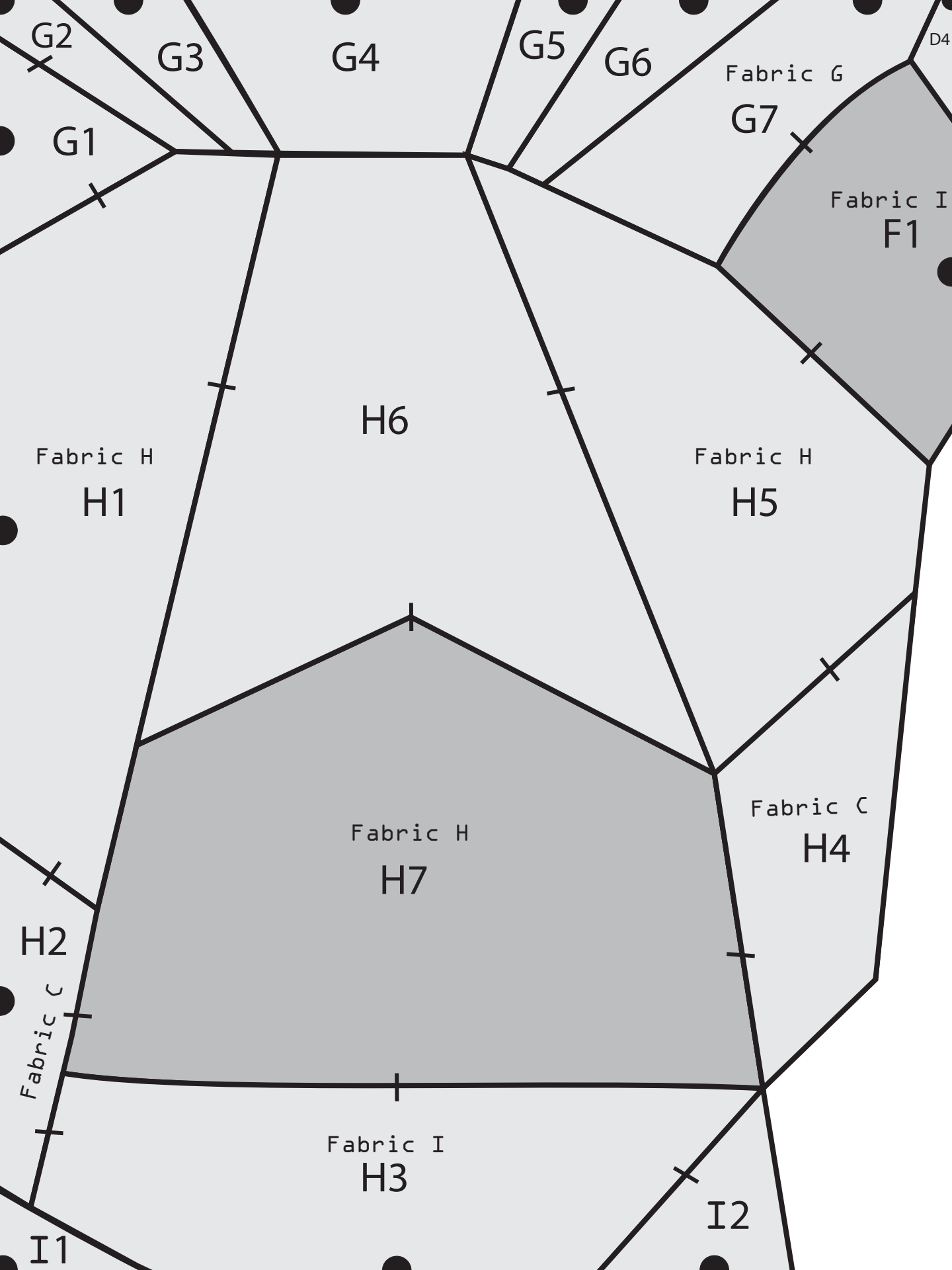


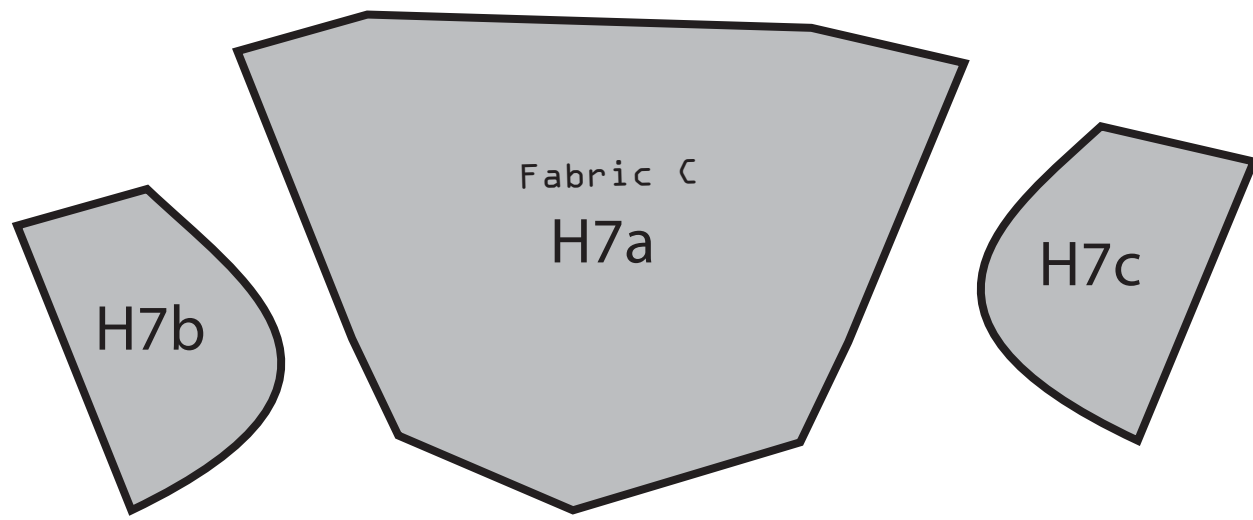
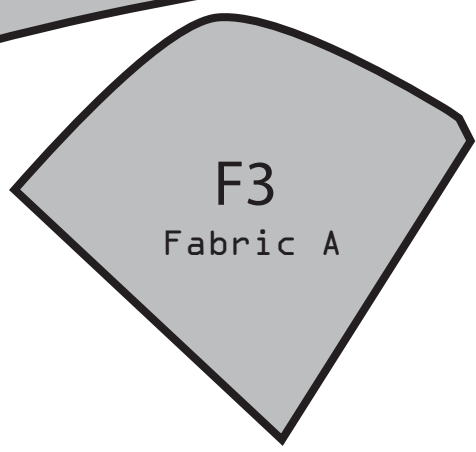
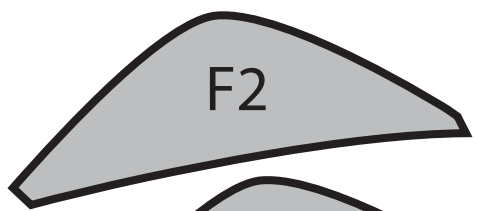
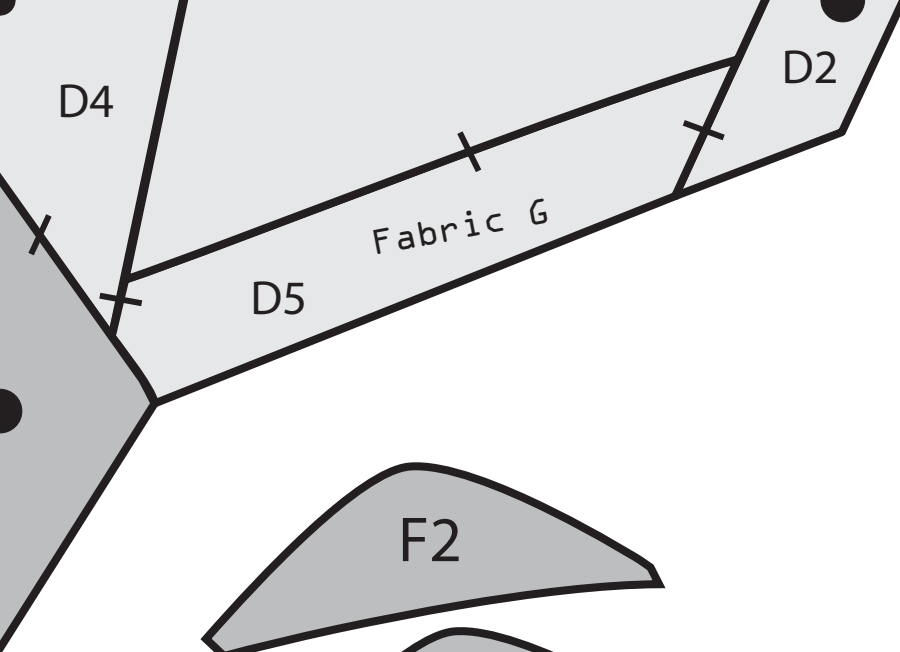
artgalleryfabrics.com

NOTE: While all possible care has been taken to ensure the accuracy of this pattern, We are not responsible for printing errors or the way in which individual work varies. Please read instructions carefully before starting the construction of this quilt. If desired, wash and iron your fabrics before starting to cut.

© 2018 Courtesy of Art Gallery Quilts LLC. All Rights Reserved.





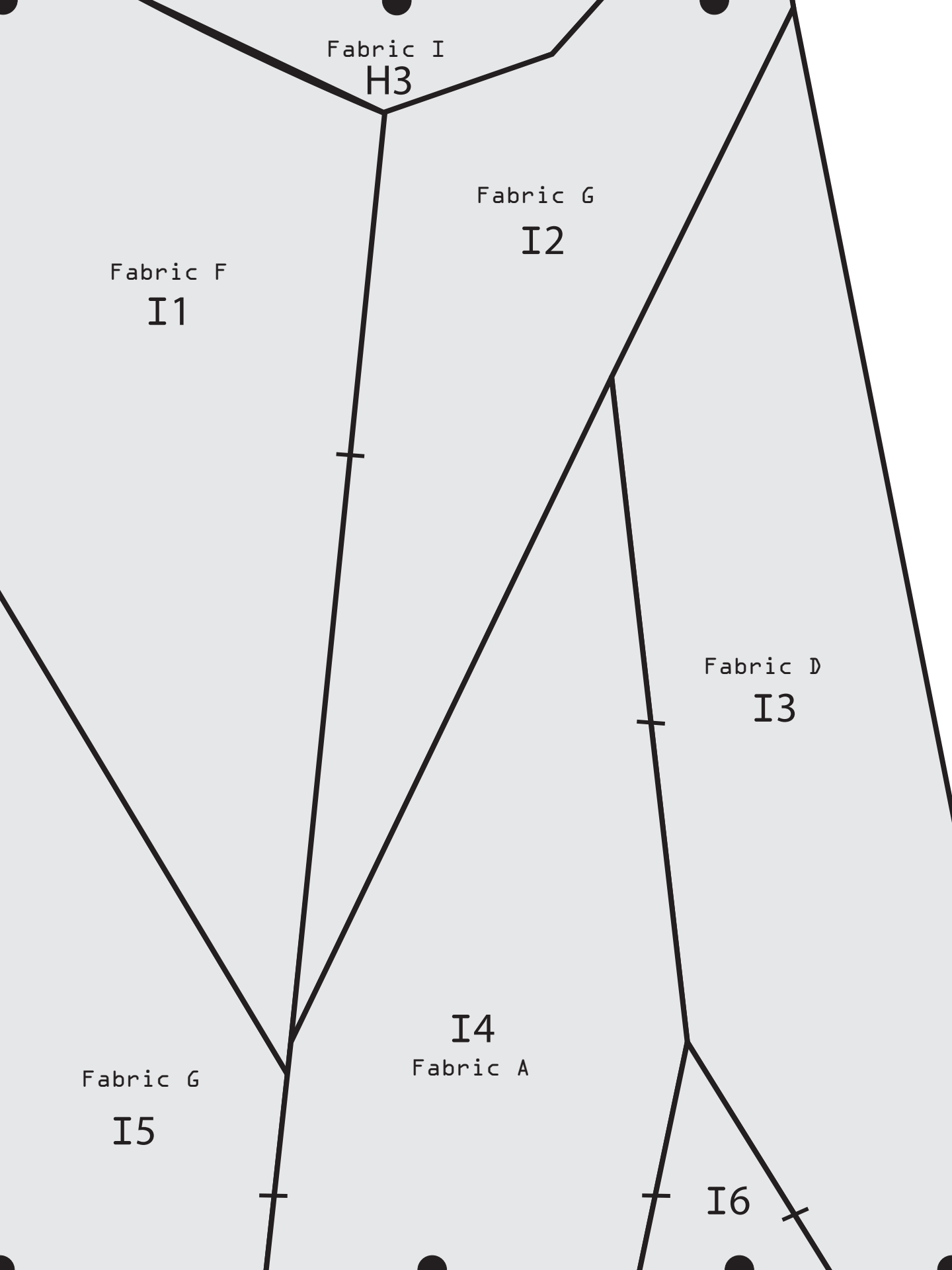


Fabric F

I1

Fabric G

I5



Fabric I

H3

Fabric G

I2

Fabric F

I1

Fabric D

I3

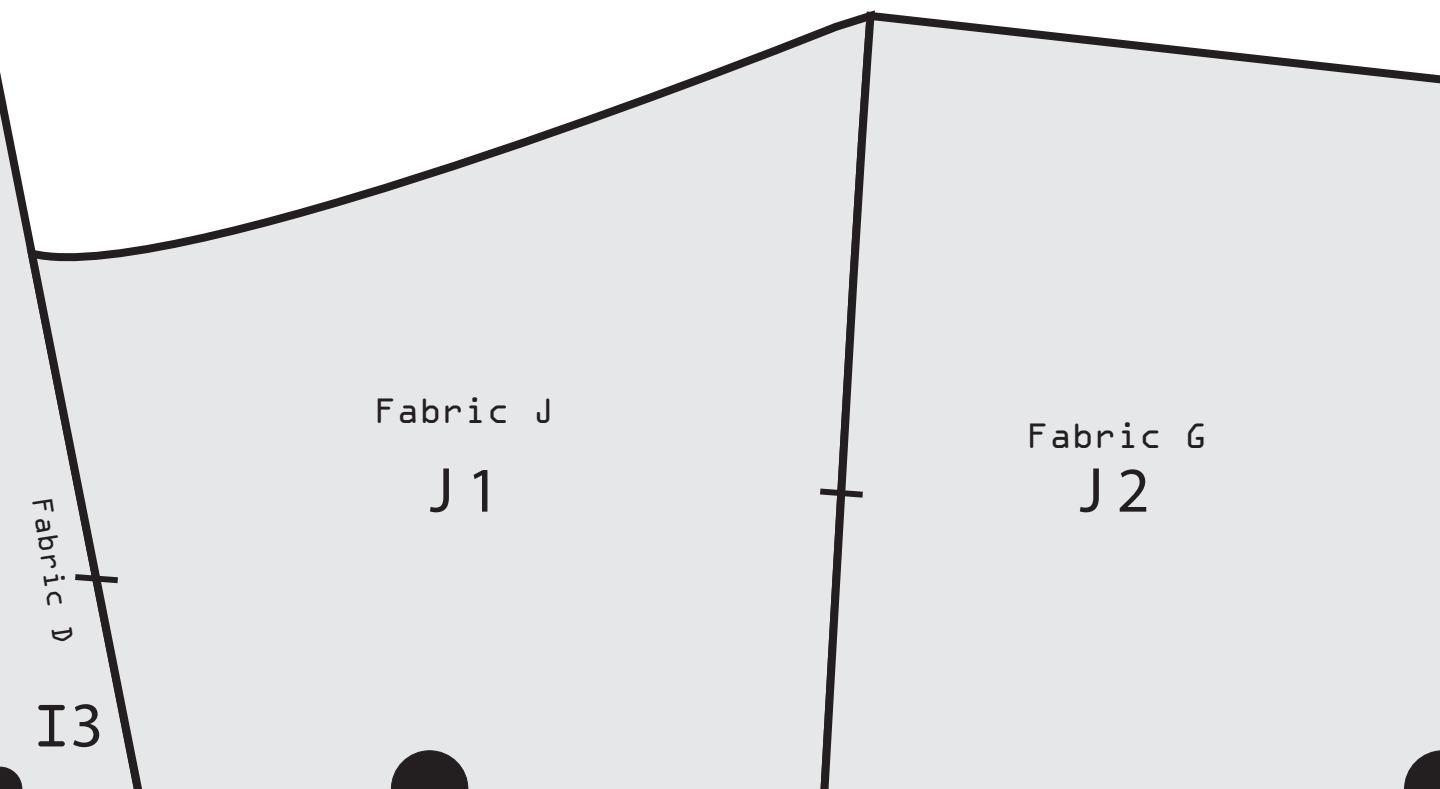
I4

Fabric A

Fabric G

I5

I6



Fabric D

I3

Fabric J

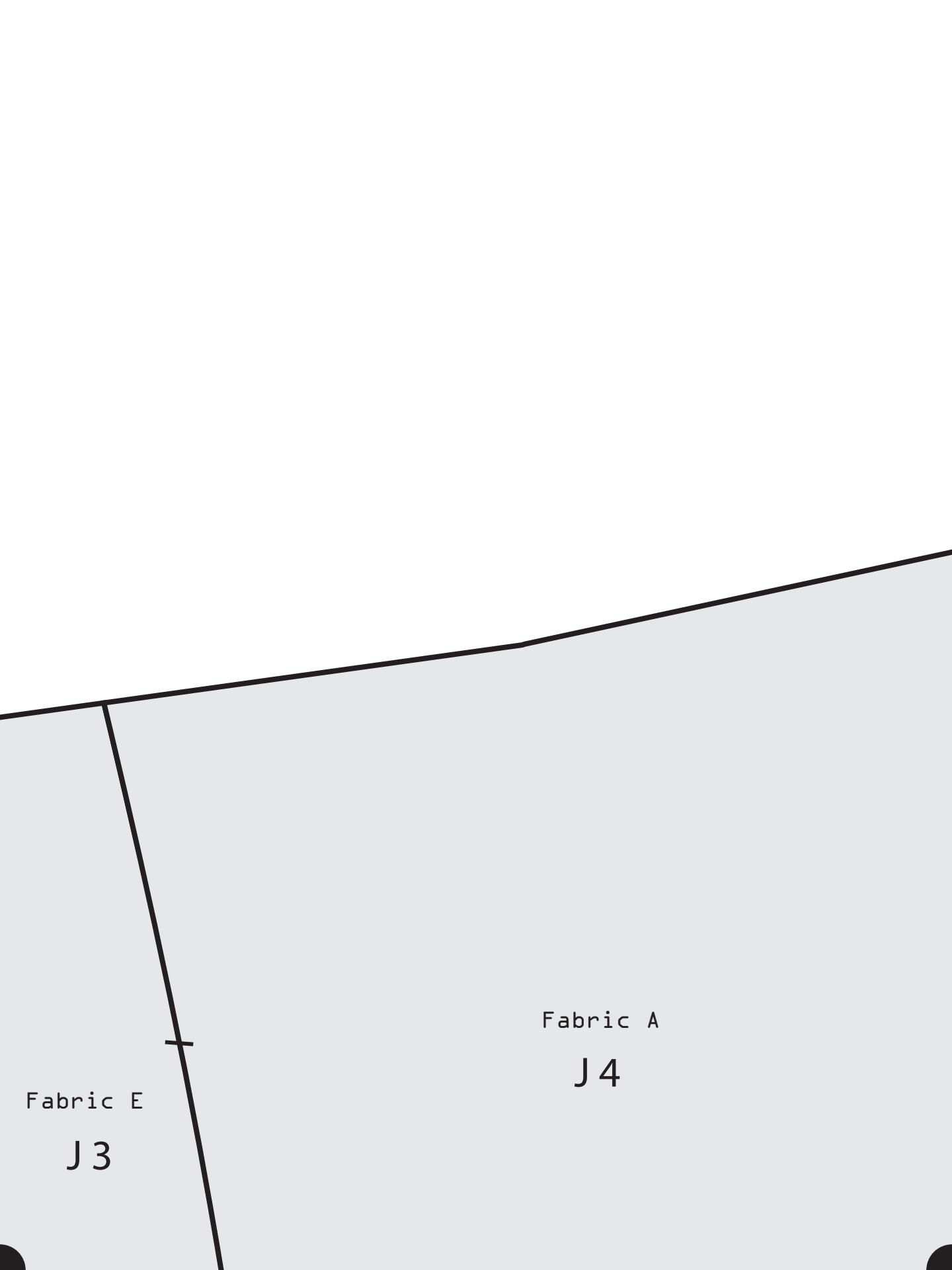
J1

Fabric G

J2

Fabric G
J2

Fabric E
J3

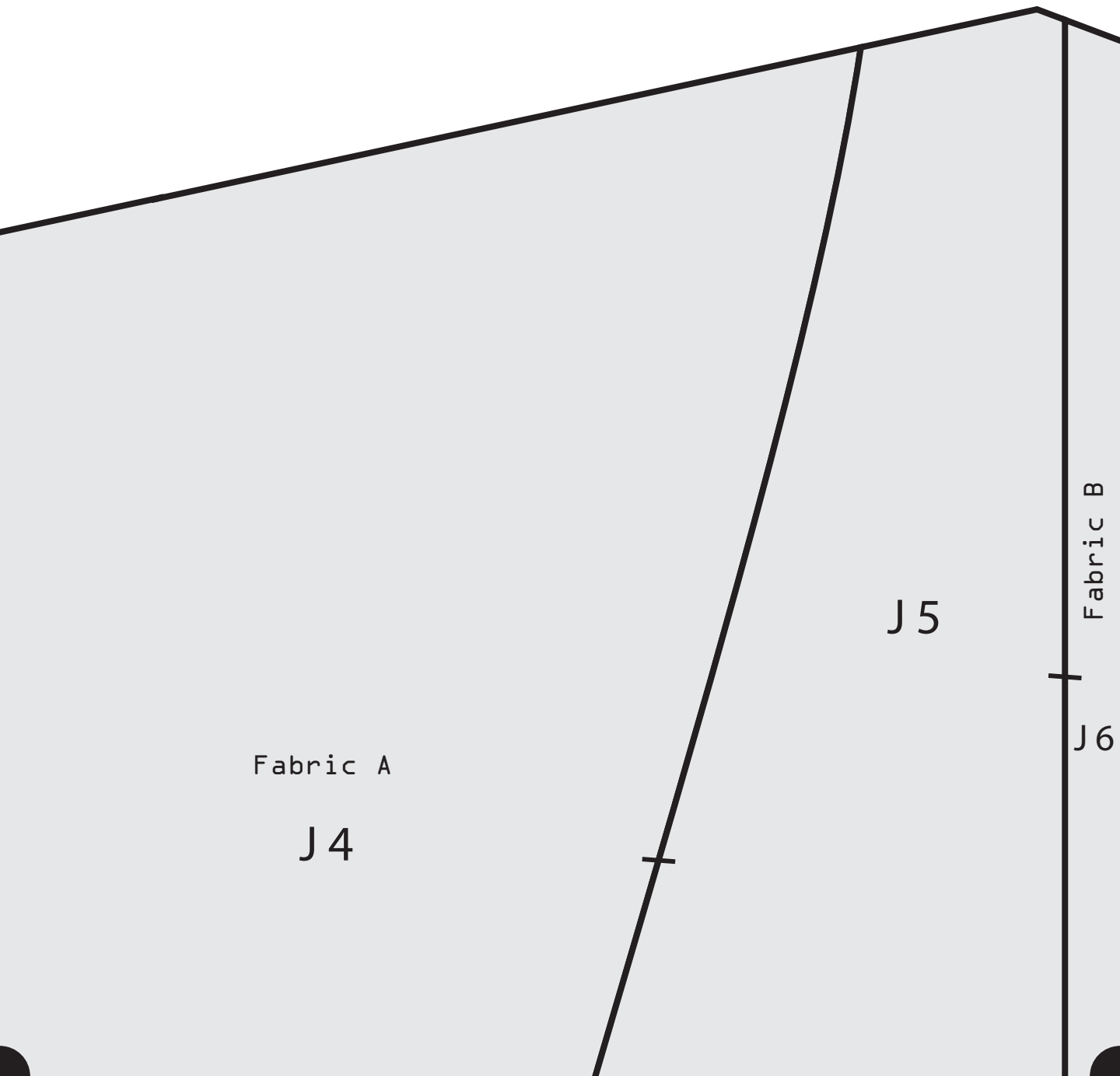


Fabric E

J 3

Fabric A

J 4



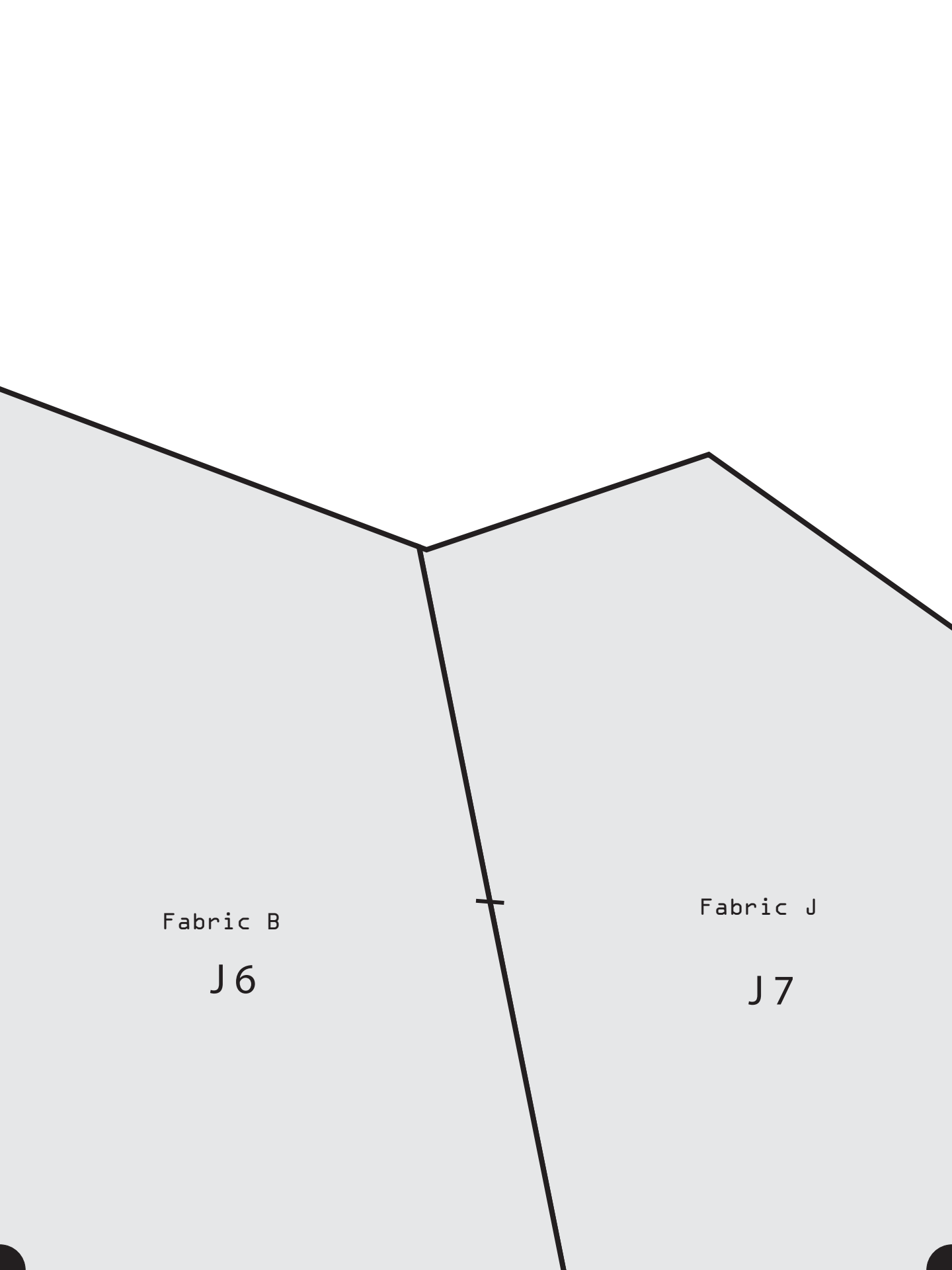
Fabric A

J 4

J 5

Fabric B

J 6



Fabric B

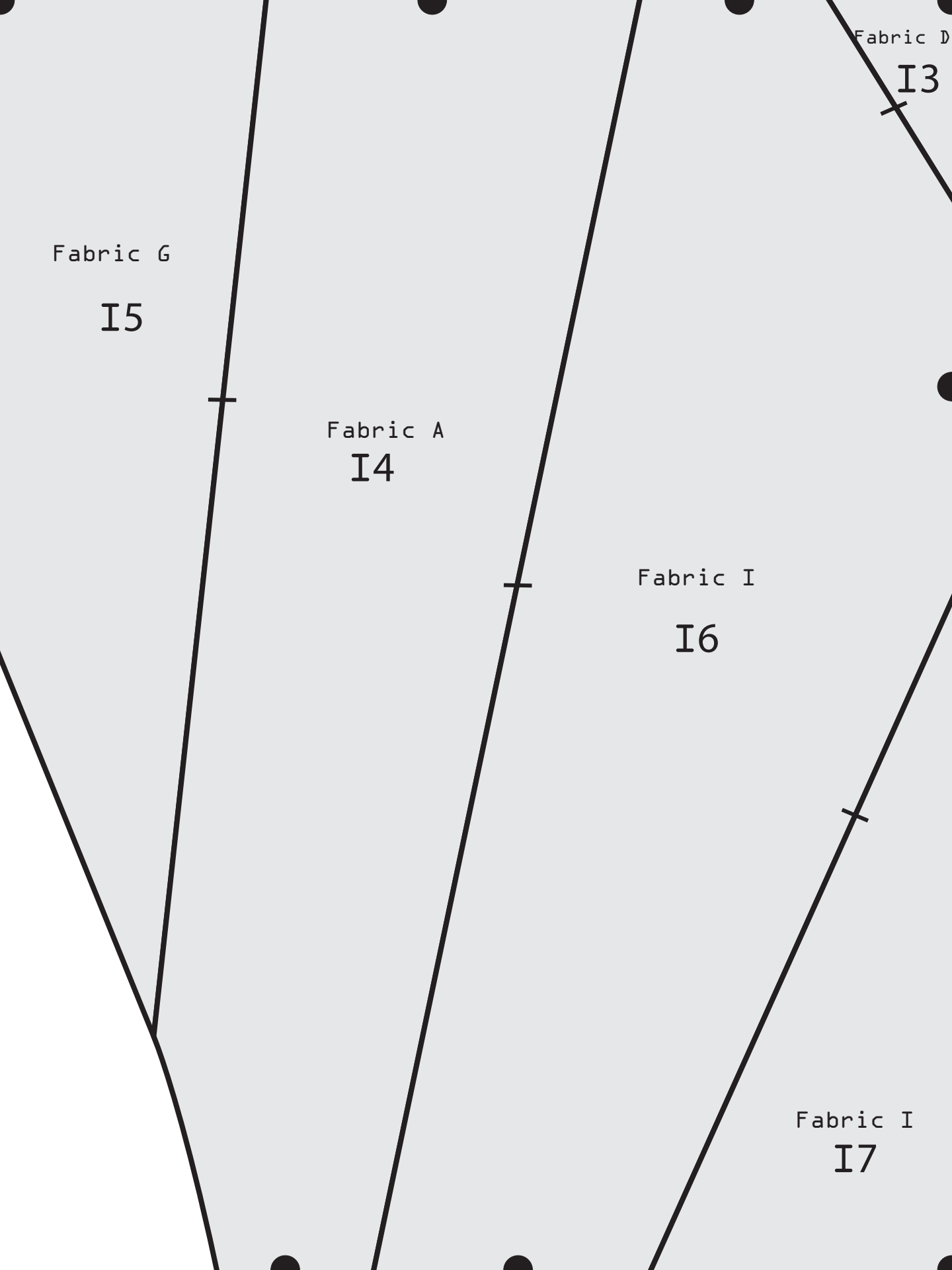
J6

Fabric J

J7

Fabric G

I5



Fabric D

I3



Fabric G

I5



Fabric A

I4



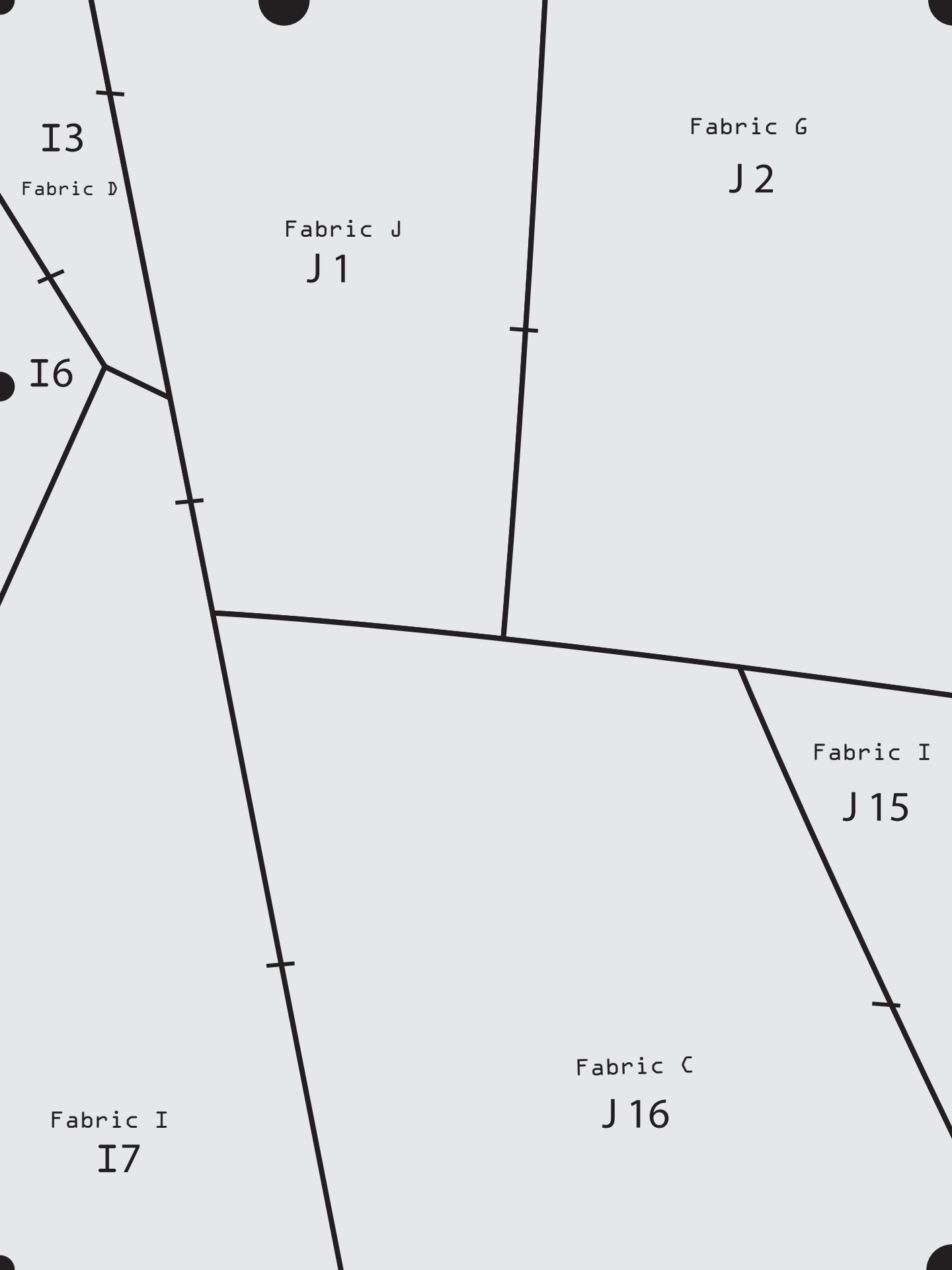
Fabric I

I6



Fabric I

I7



Fabric D

I3

Fabric J

J1

Fabric G

J2

I6

Fabric I

J15

Fabric C

J16

Fabric I

I7

Fabric G
J 2

Fabric E
J 3

Fabric I
J 15

Fabric B
J 14

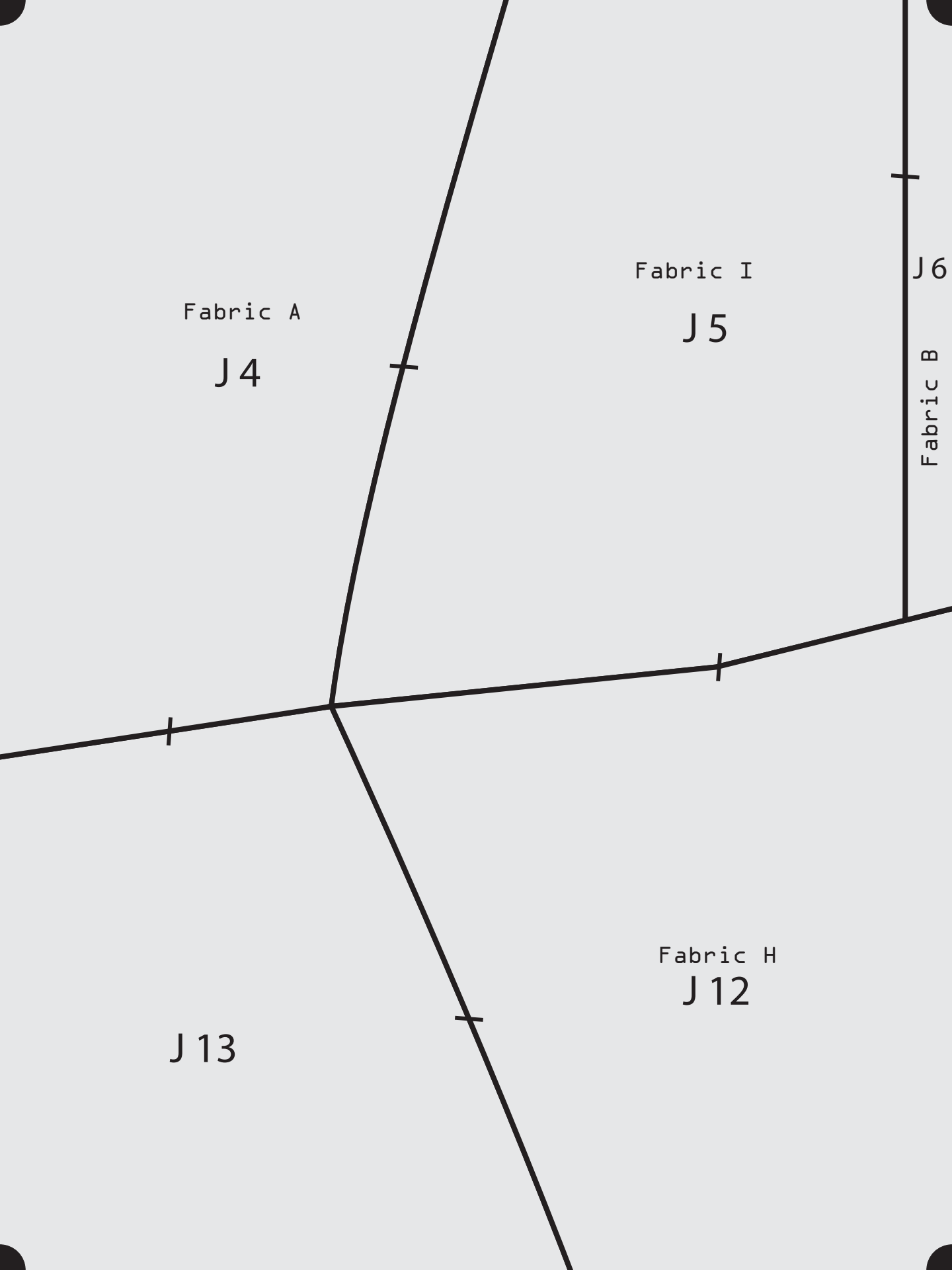
J 16

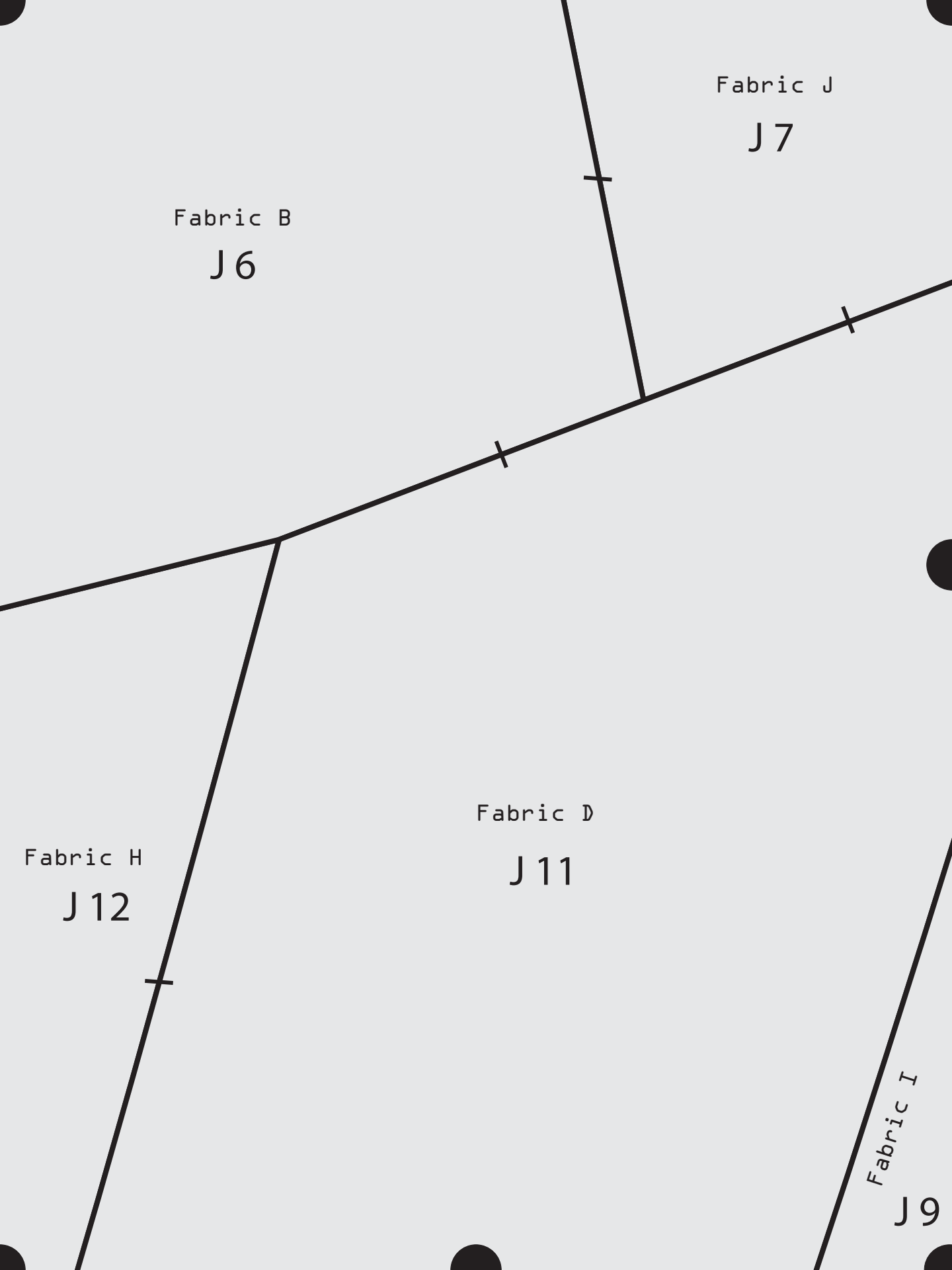
Fabric E
J 3

Fabric A
J 4

Fabric B
J 14

J 13





Fabric A

I4

Fabric I

I6

Fabric I

I7

Fabric I

I8

N1

N2

Fabric I
I7

Fabric C
J 16

Fabric I
I8

N1

Fabric G
M1

Fabric B
J 14

Fabric I
J 15

Fabric C
J 16

Fabric G
M1

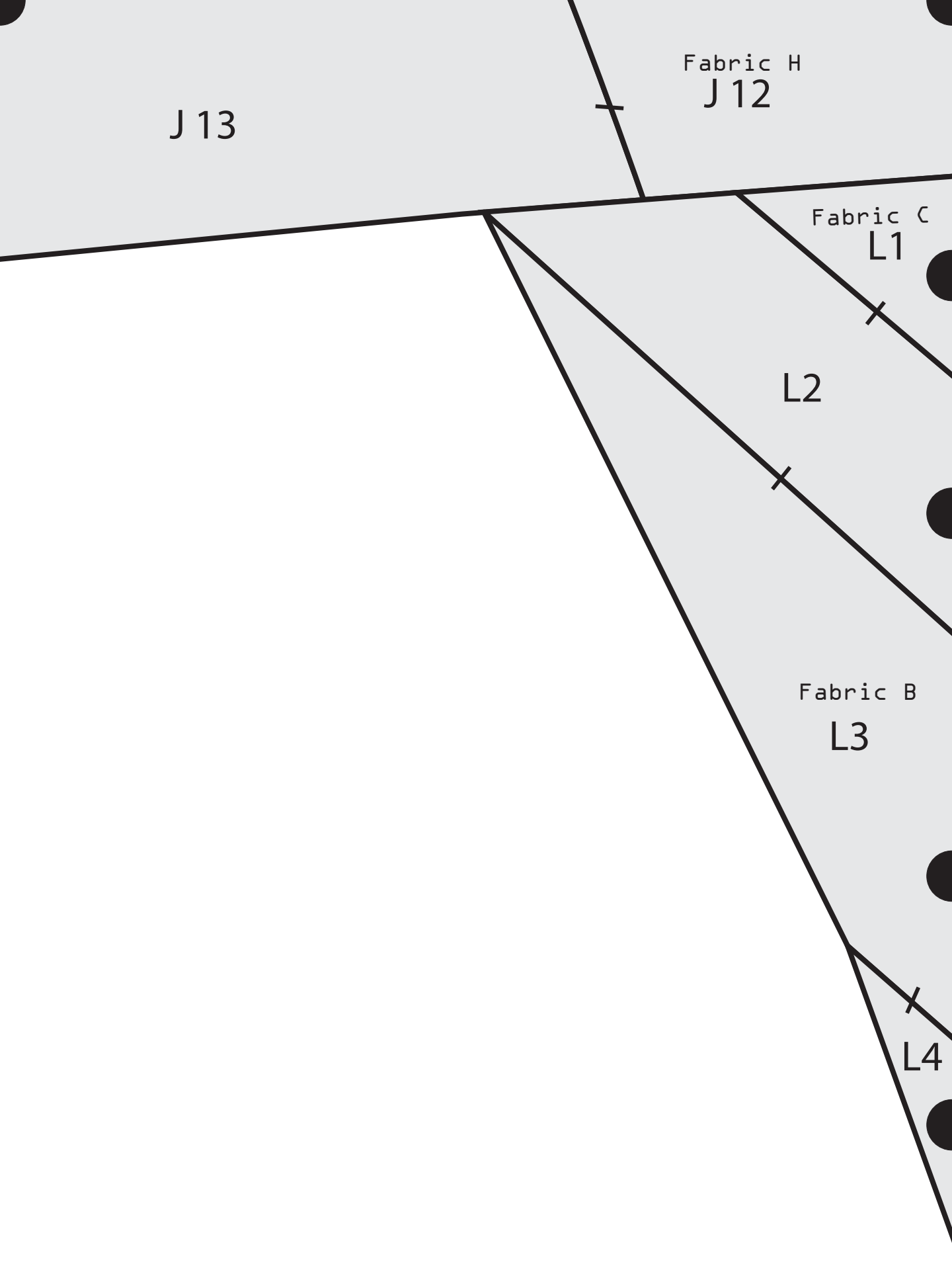
Fabric I
M2

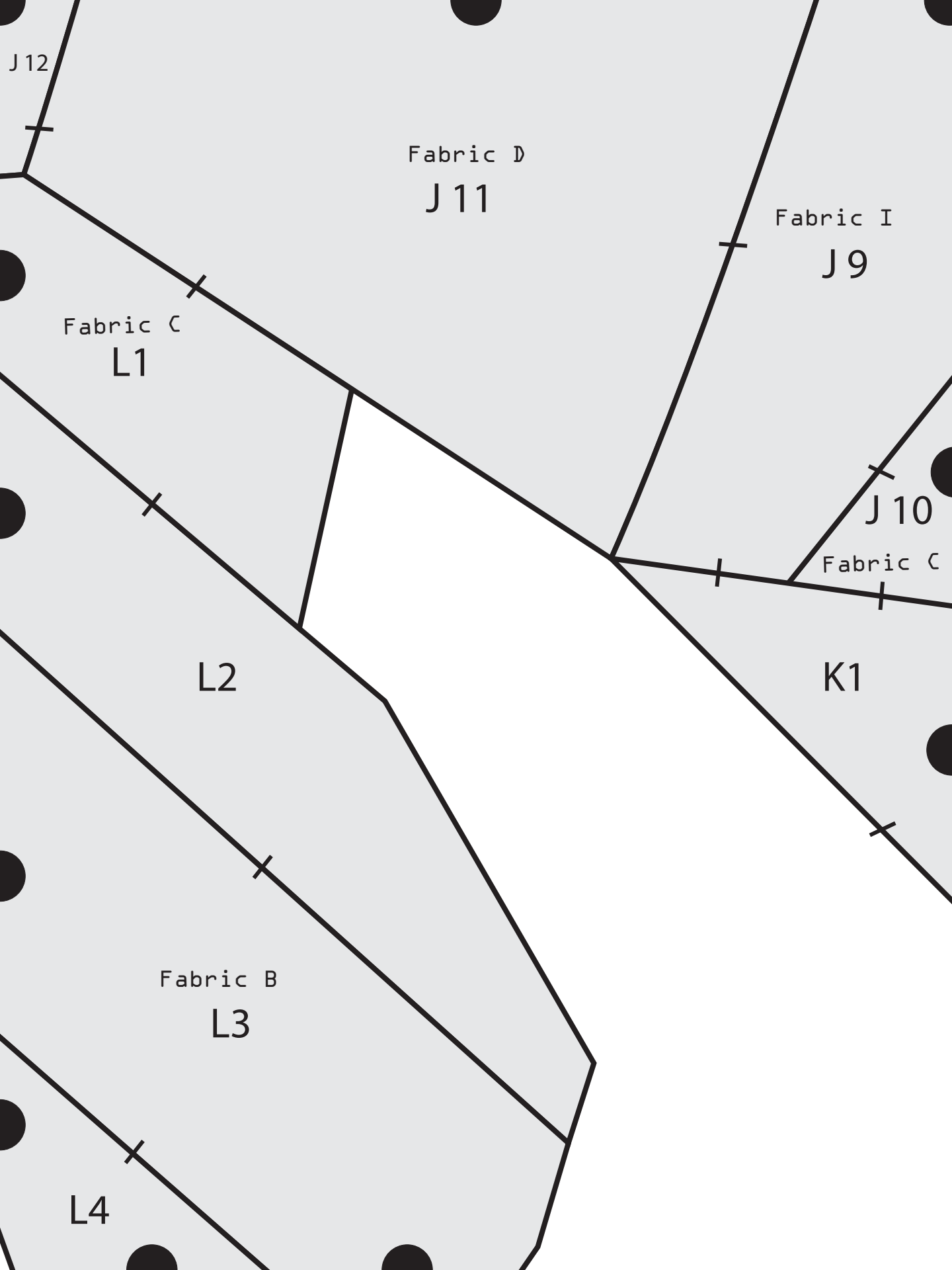
Fabric B

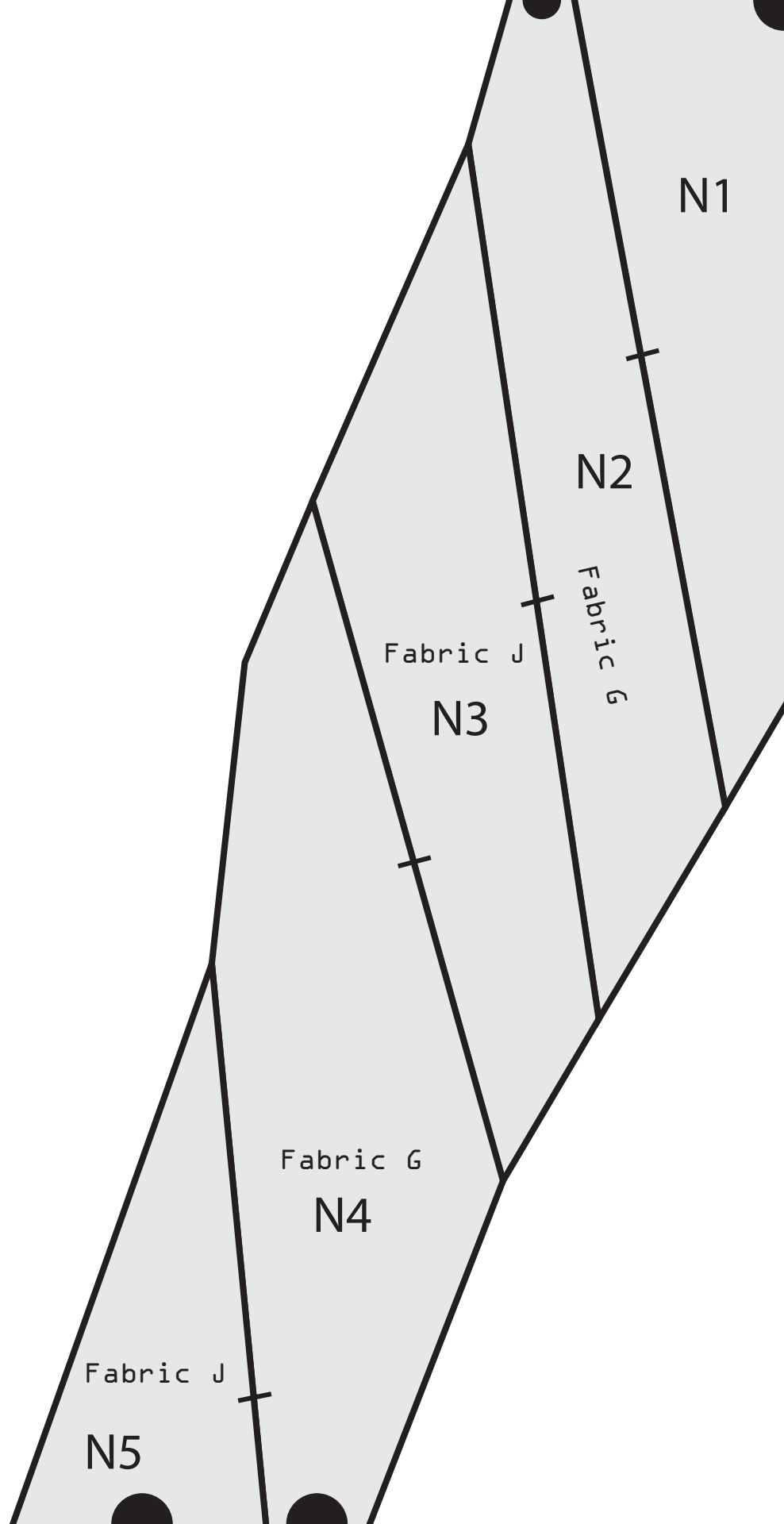
J 14

+

J 13







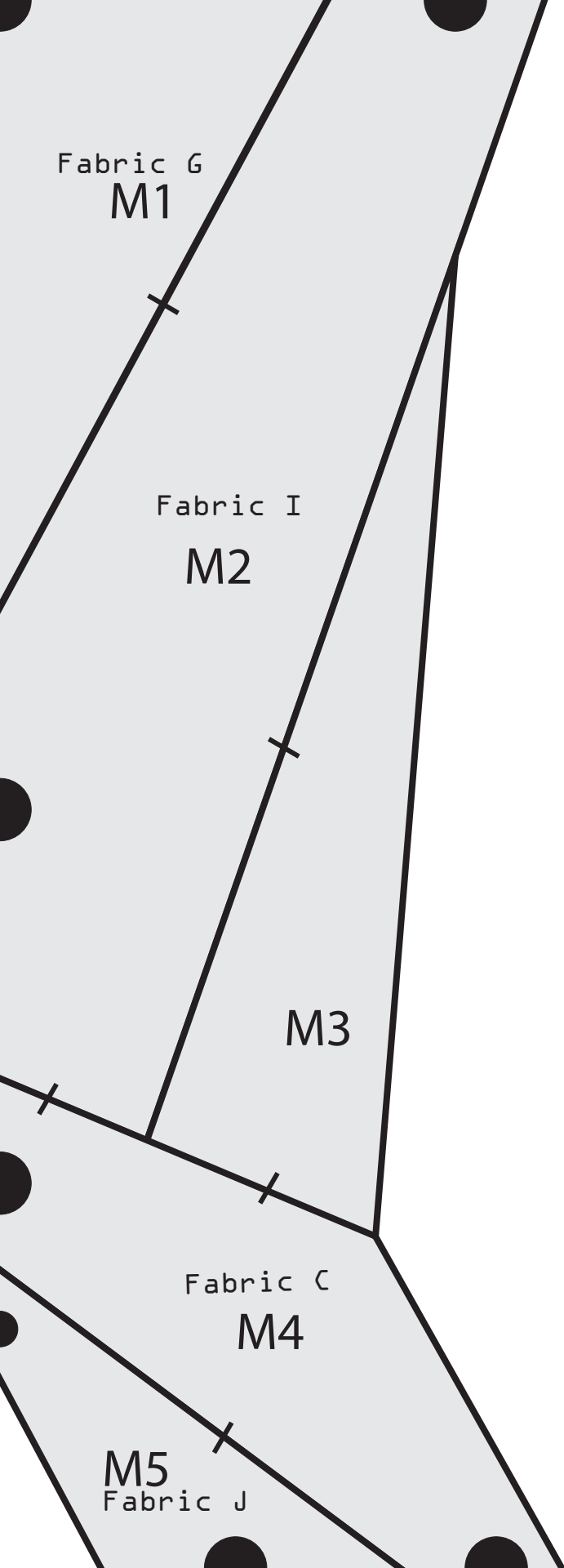
N1

Fabric G
M1

M2
Fabric I

M4

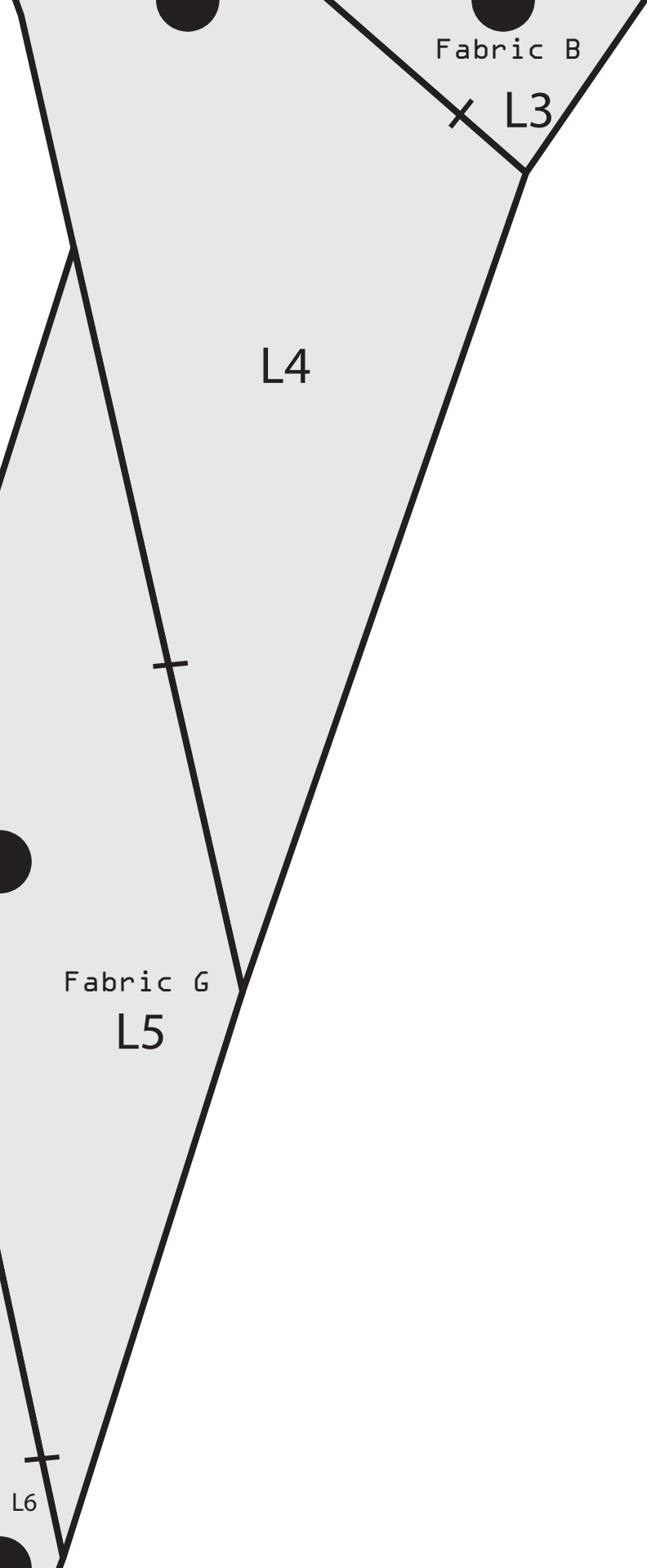
M5



L5

—

Fabric I
L6



Fabric B

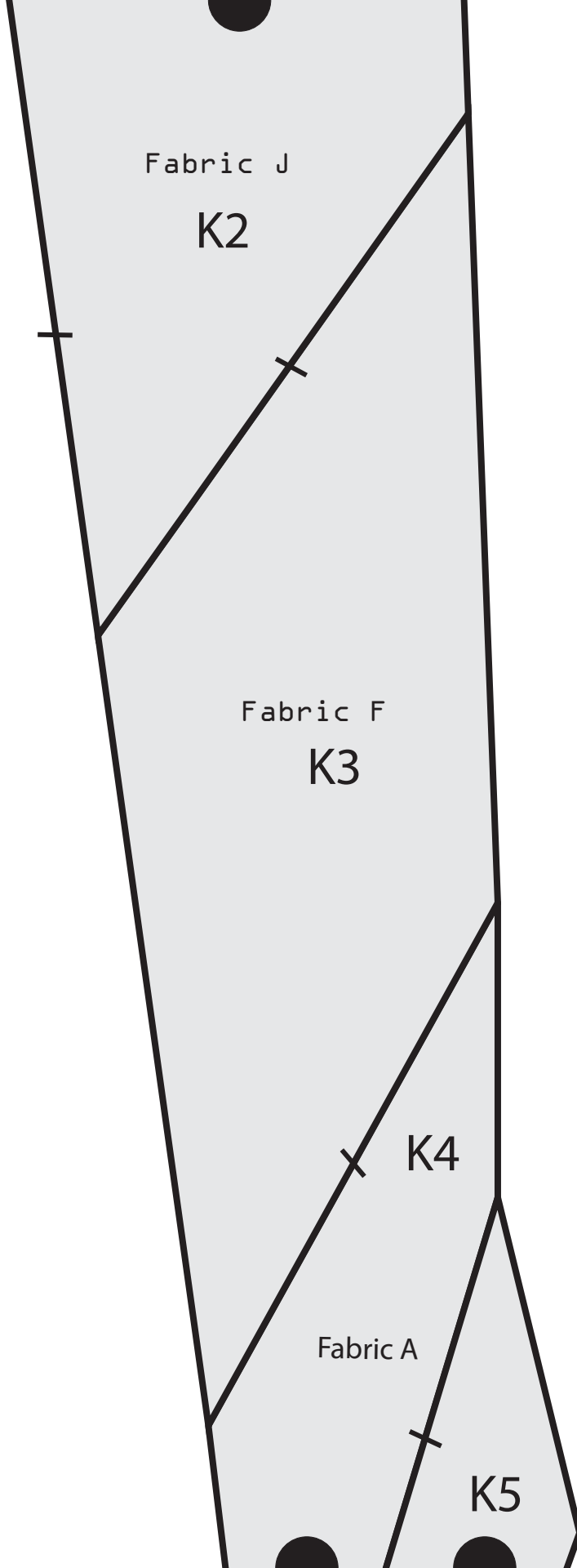
x L3

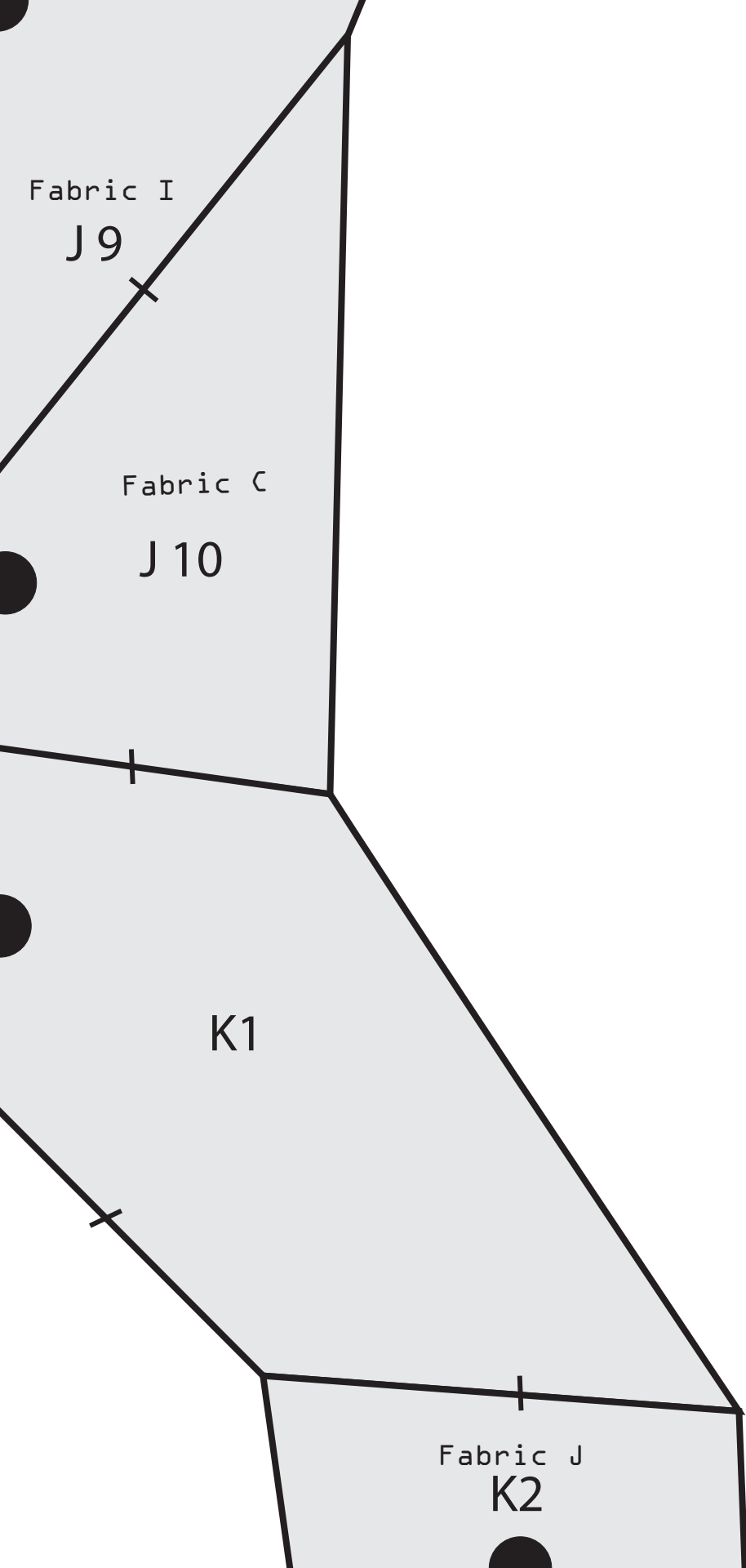
L4

Fabric G

L5

L6





Fabric G

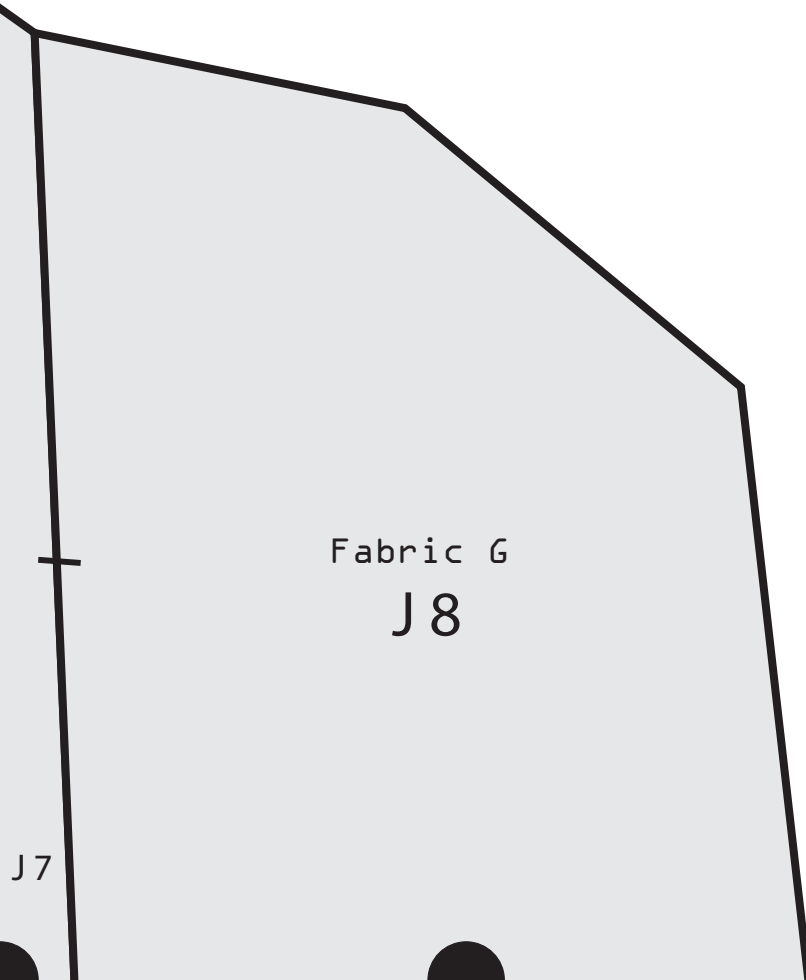
J 8

J 7

J 11

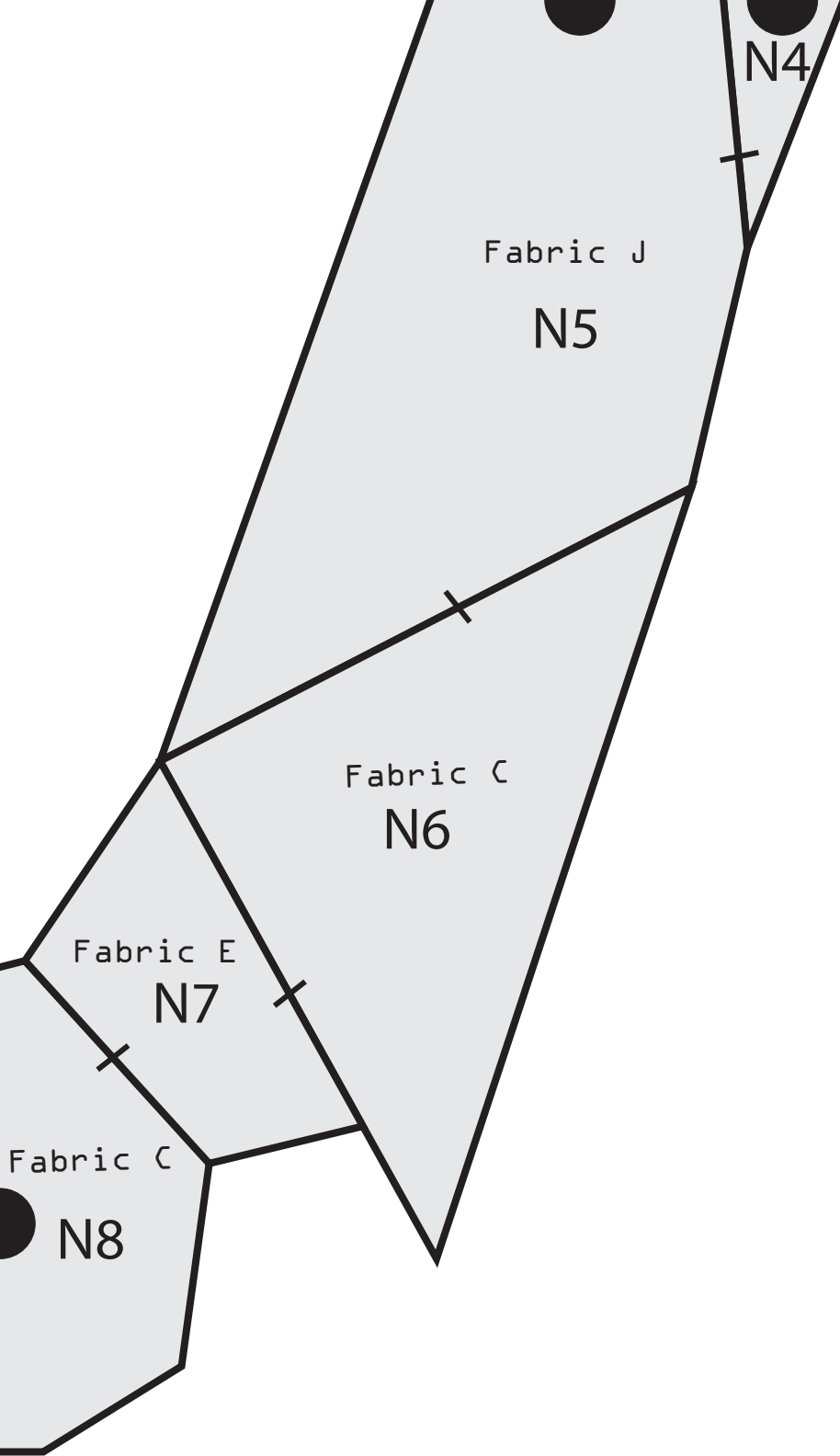
Fabric I

J 9



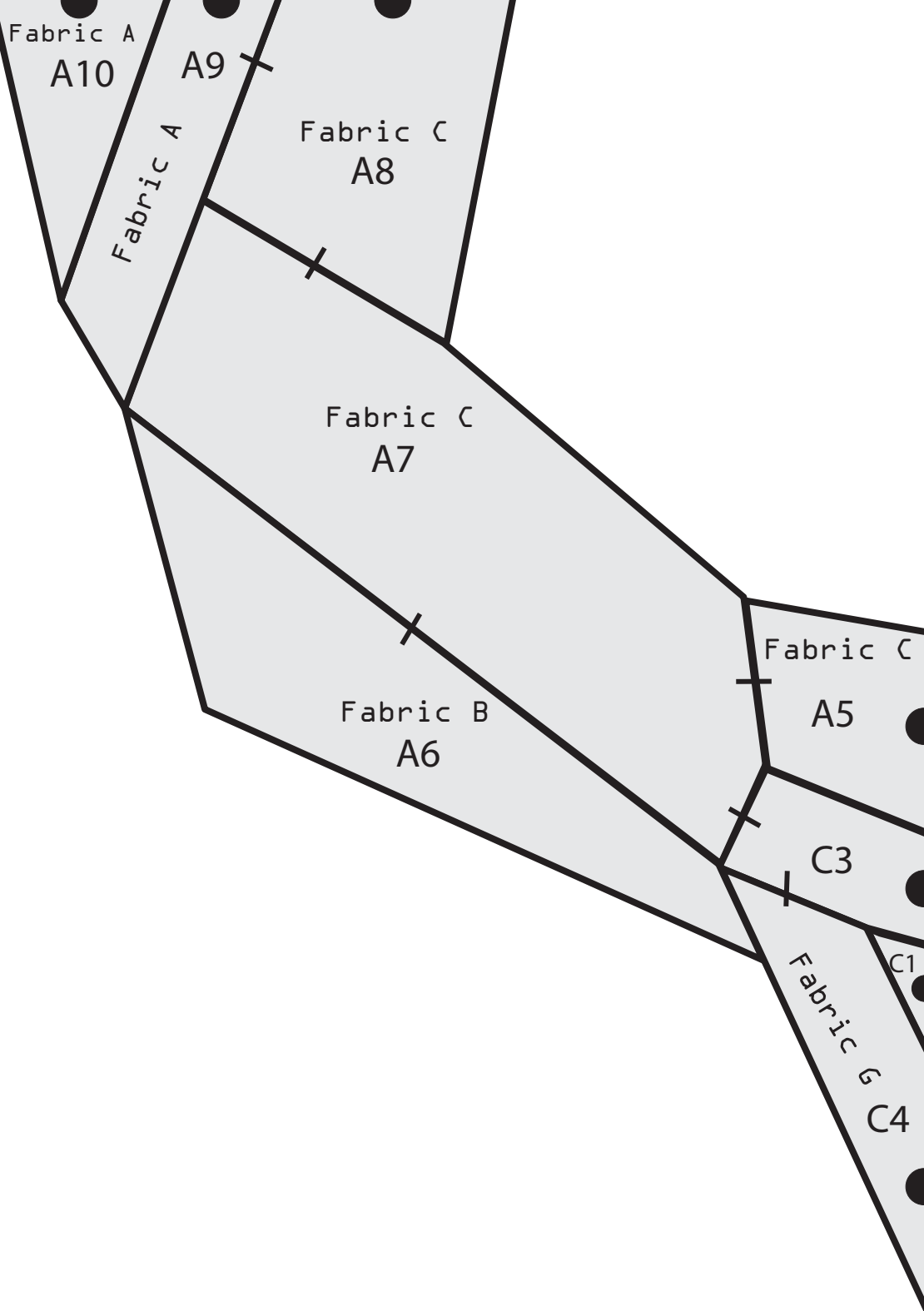
Fabric G
J 8

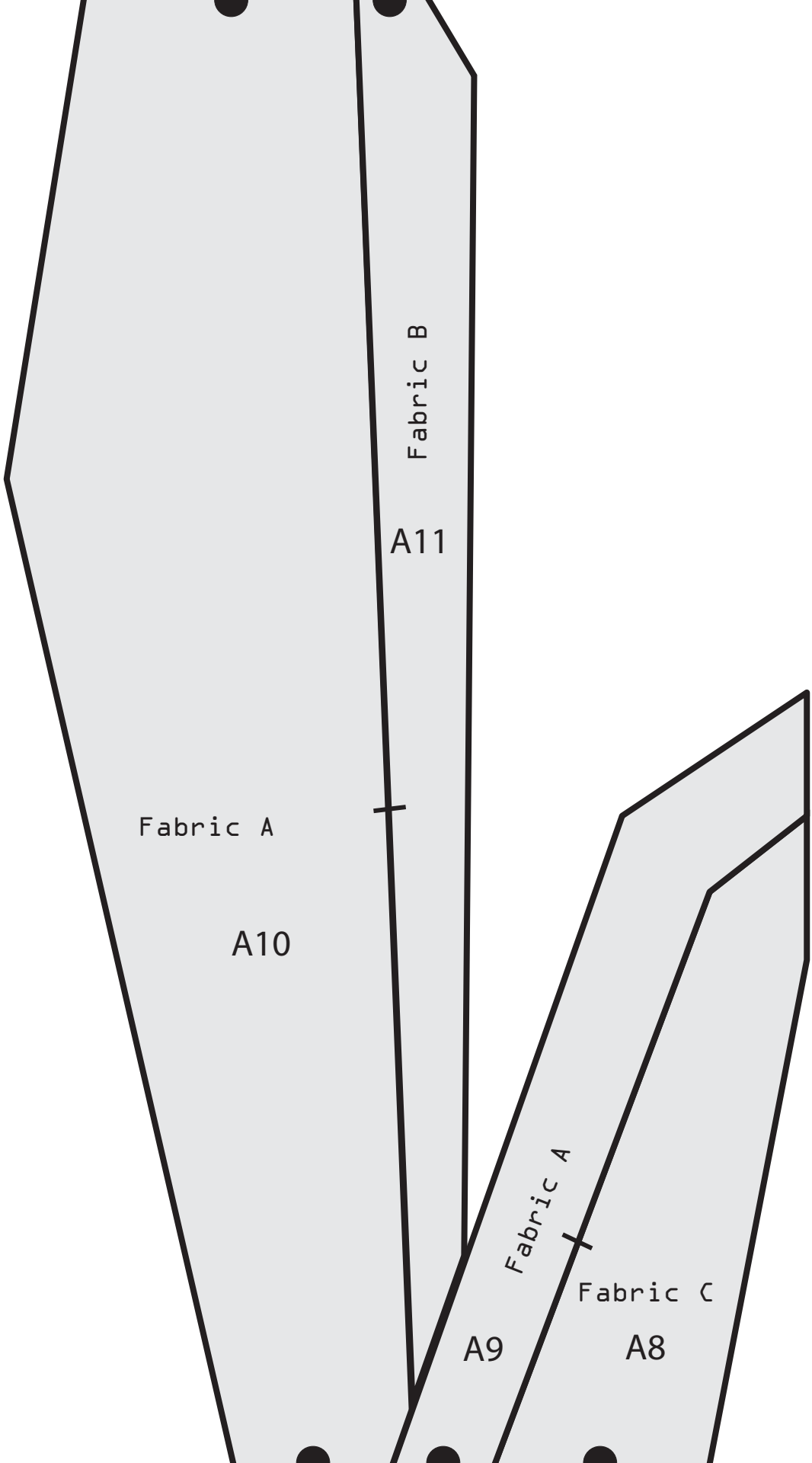
J 7

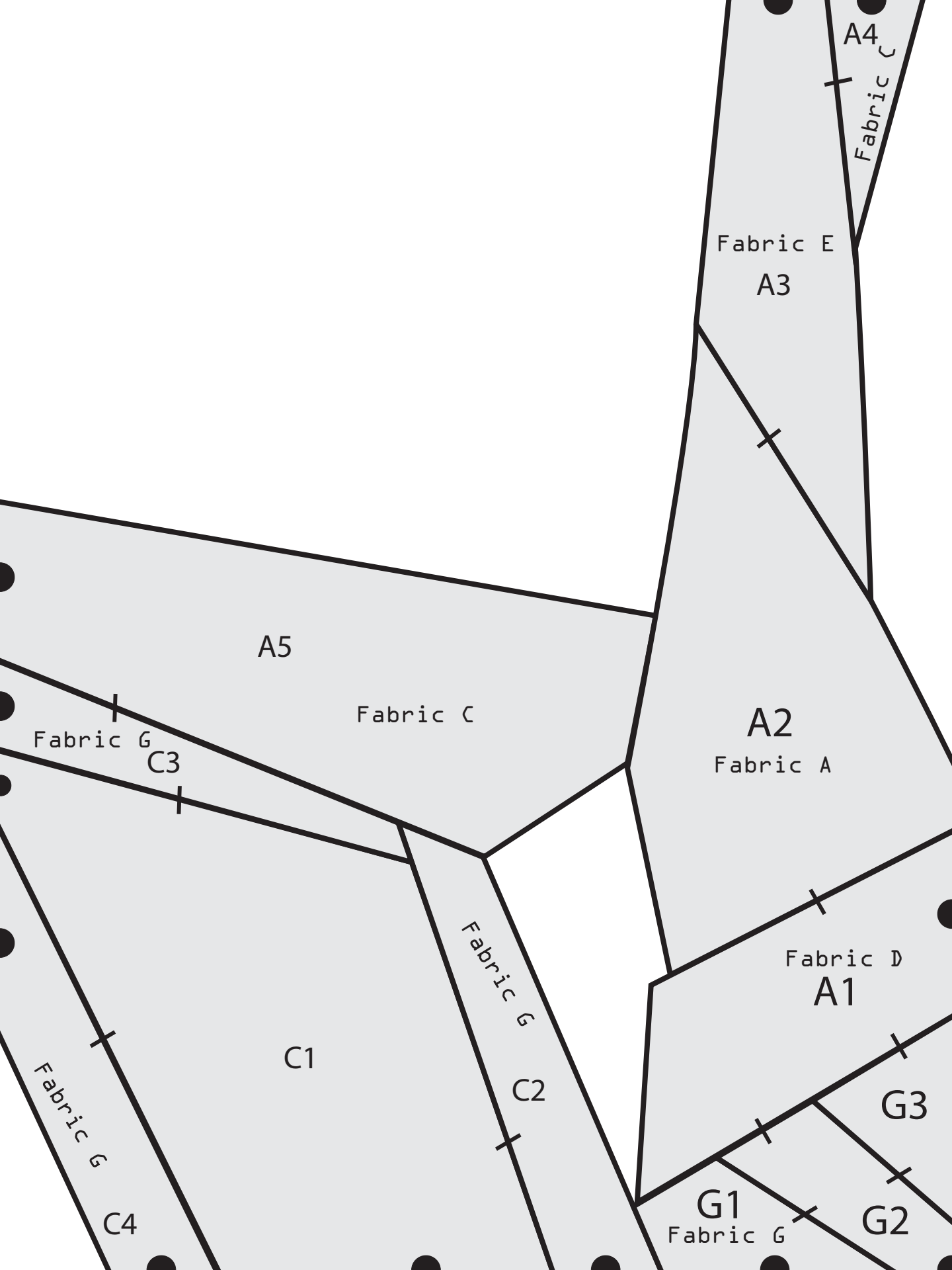


Fabric C

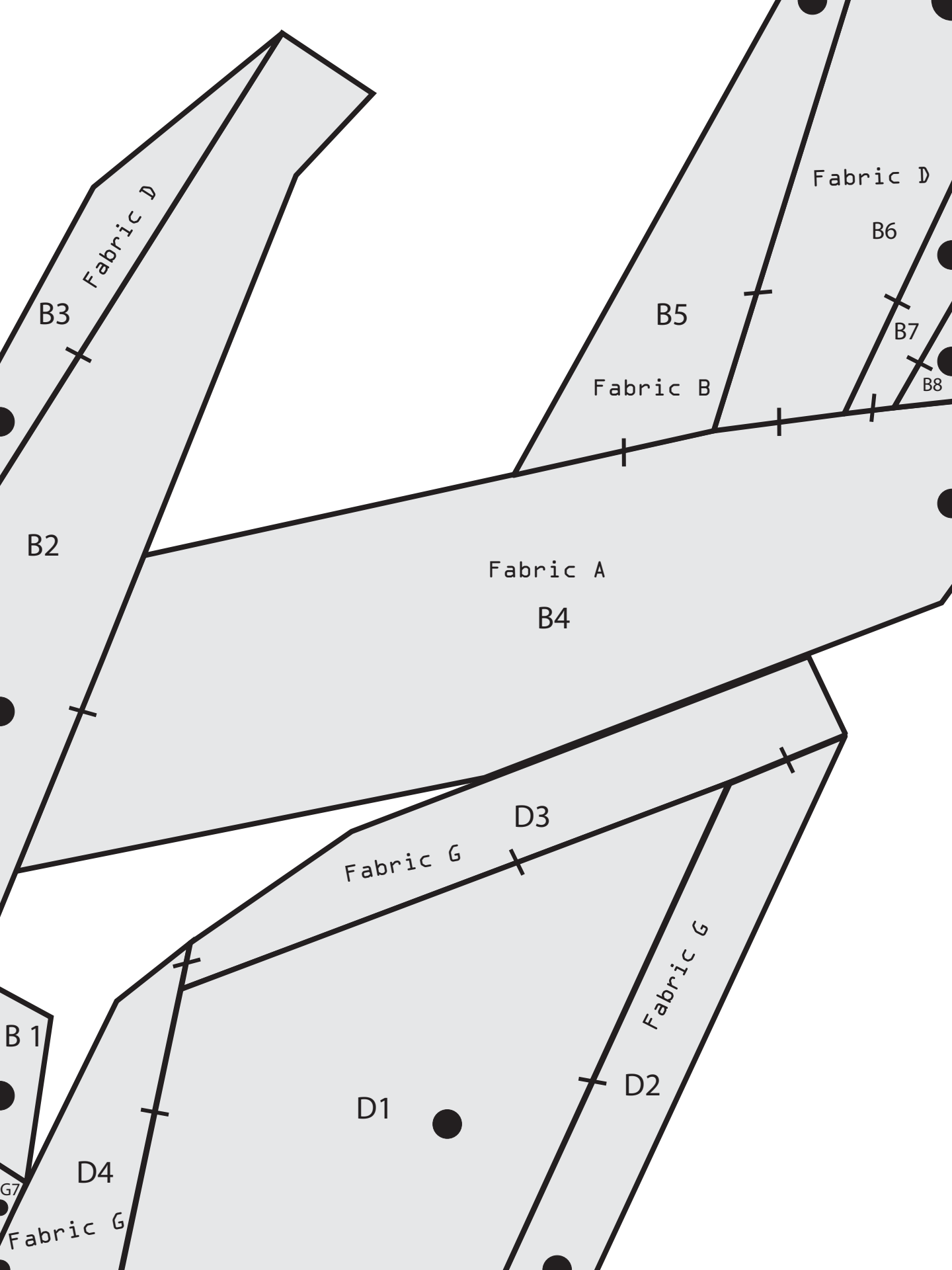
N8

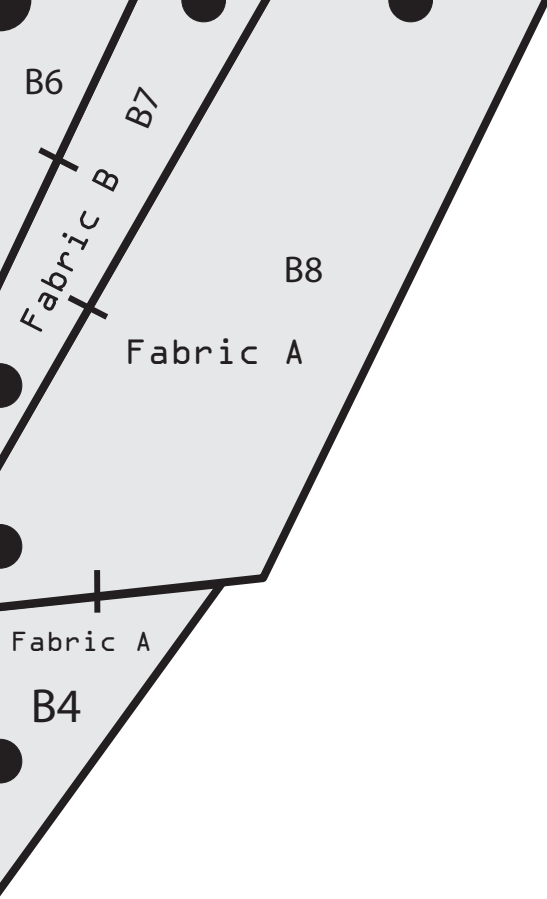


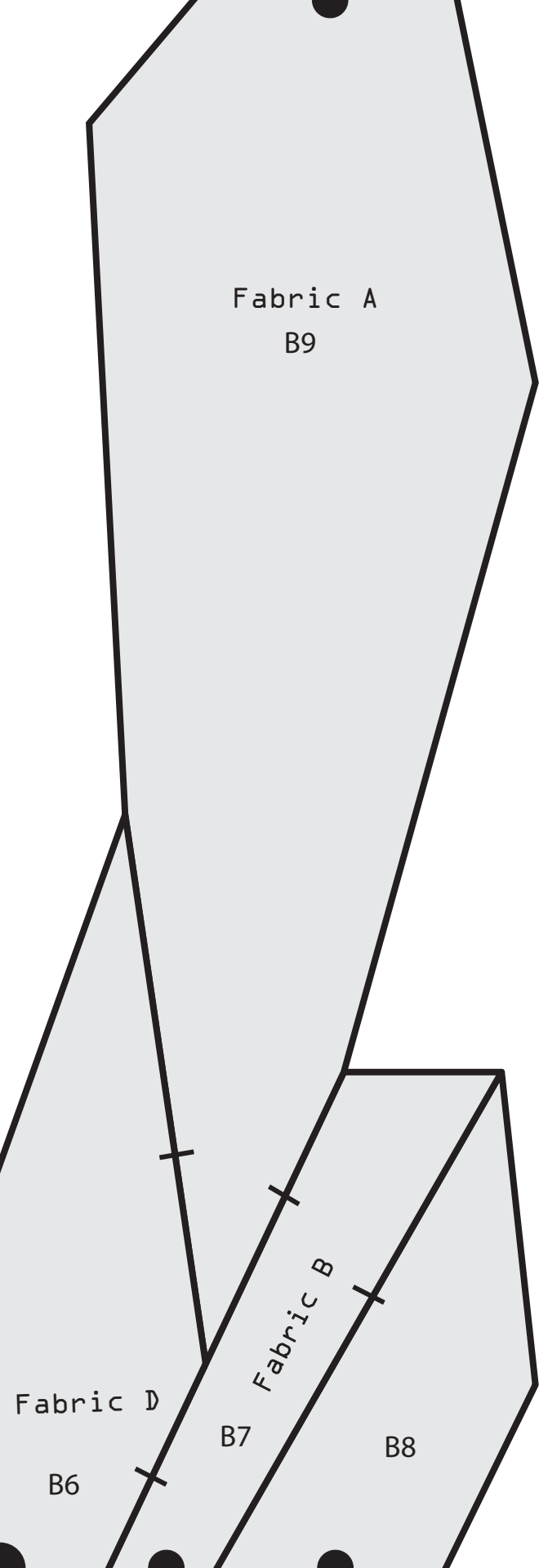


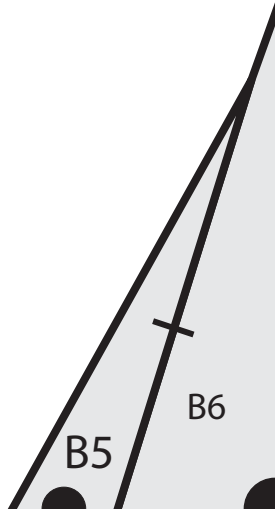


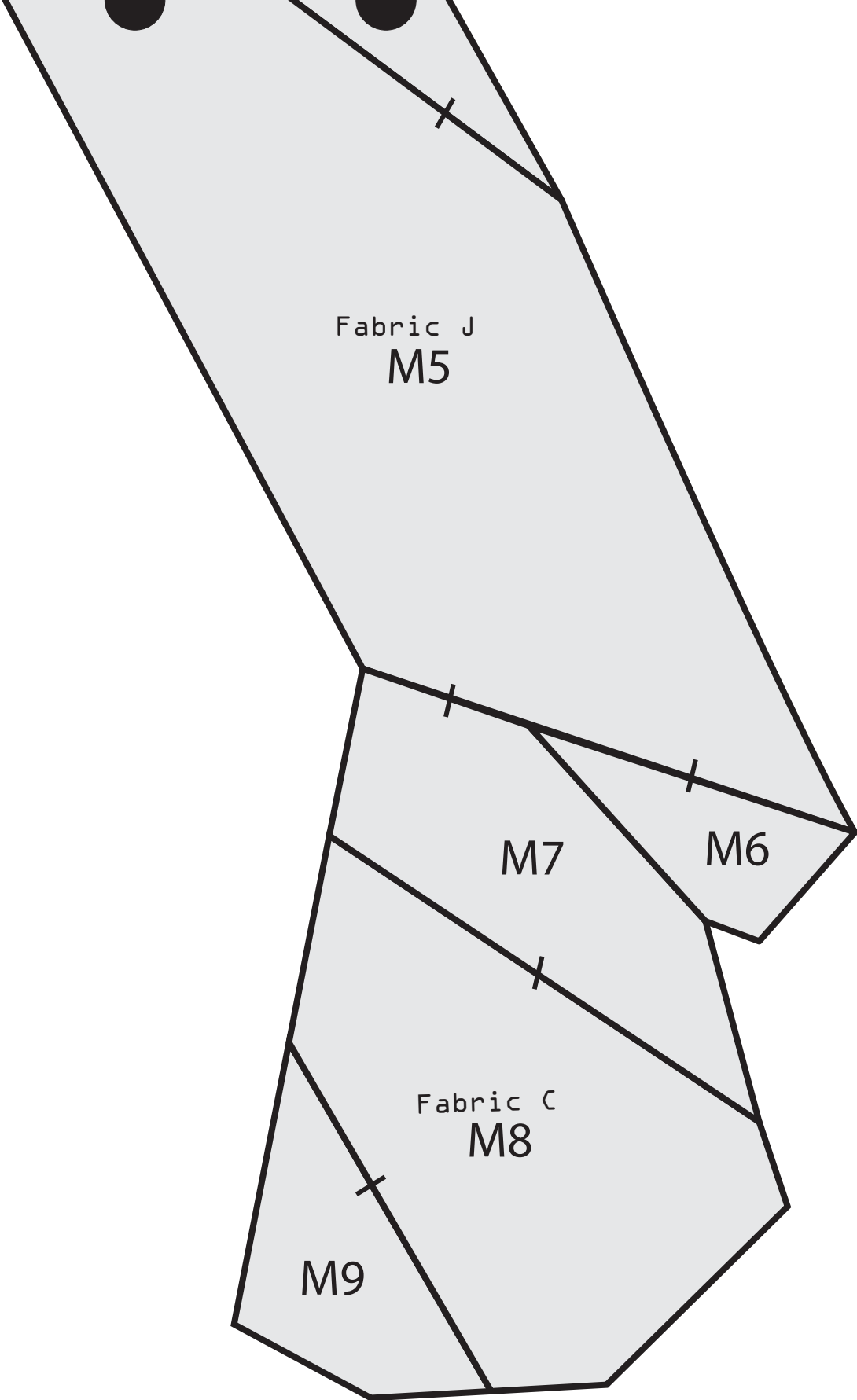












Fabric I

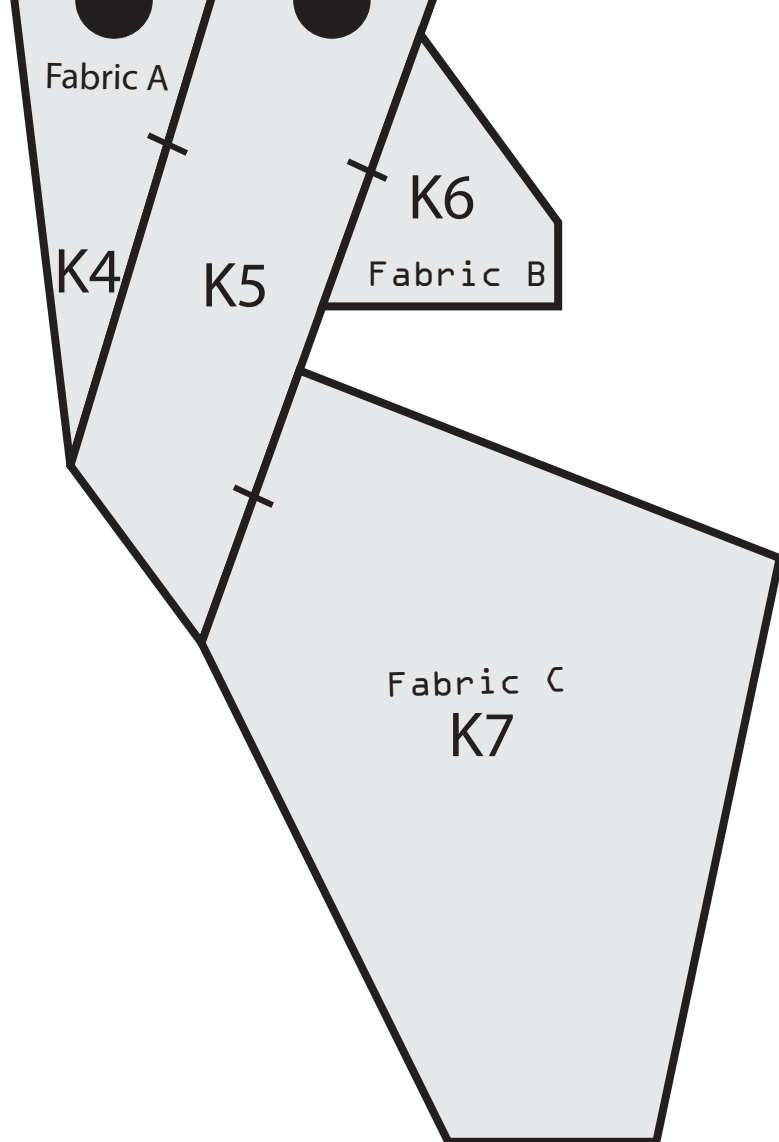
L6

Fabric A

L7

Fabric C

L8





L6

Fabric G



A diagram showing two overlapping fabric samples. Sample A10 is a larger, light gray quadrilateral on the left. Sample A11 is a smaller, light gray triangle on the right, partially overlapping A10. Both samples have a black circular dot at their bottom center. The labels 'A10' and 'Fabric A' are inside A10, and 'A11' is inside A11.

A10

Fabric A

A11

B9

Fabric A

