

MANTRA



FUSIONS  by AGF

FREE PATTERN

XXXXXXXXXXXXXXXXXXXXXXXXXXXX

MANTRA

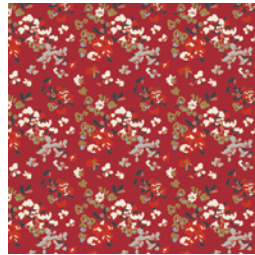
QUILT DESIGNED BY AGFstudio

Trinkets FUSION

FABRICS DESIGNED BY AGFstudio



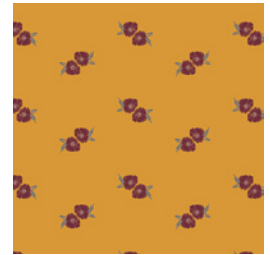
FUS-T-1405
MEADOW TRINKETS



FUS-T-1402
VINTAGE FLORETS TRINKETS



FUS-T-1407
FLOWER GLORY TRINKETS



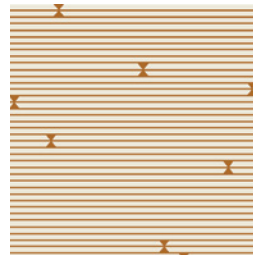
FUS-T-1404
FLOWER STAMP TRINKETS



FUS-T-1409
FLORAL UNIVERSE TRINKETS



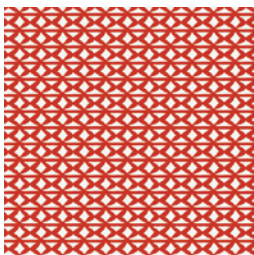
FUS-T-1403
MANDALA HARMONY TRINKETS



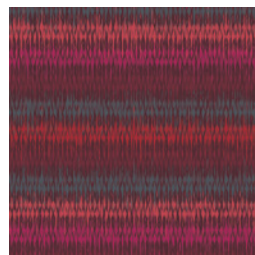
FUS-T-1401
GRAN PIANO TRINKETS



FUS-T-1400
FLOWERED ENGRAMS TRINKETS



FUS-T-1406
WALLPAPER TRINKETS



FUS-T-1408
LOOMING LOVE TRINKETS





FINISHED SIZE
30" diameter x 5" depth

FABRIC REQUIREMENTS

Fabric A	FUS-T-1400	1/8 yd.
Fabric B	FUS-T-1402	1/8 yd.
Fabric C	FUS-T-1404	1 7/8 yd.
Fabric D	FUS-T-1405	5/8 yd.
Fabric E	FUS-T-1407	1/8 yd.
Fabric F	FUS-T-1408	1/8 yd.
Fabric G	FUS-T-1409	1/8 yd.

OTHER MATERIALS

Cotton Batting
Poly-fil
22" zipper
Coordinating thread

CUTTING DIRECTIONS

1/4" seam allowances are included.

Fabrics **A, B, E**:

Cut two (2) of Left Petal Template
Cut two (2) of Right Petal Template

Fabric **C**:

Cut two (2) 31" diameter circles (template provided)

Fabric **D**:

Cut one (1) 3" diameter circle (template provided)
Cut one (1) 6" x 77" rectangle (piece together from WOF strips to make length)

Fabrics **F, G**:

Cut one (1) of Left Petal Template
Cut one (1) of Right Petal Template

CONSTRUCTION

Sew all rights sides together with 1/4" seam allowance.

- Sew together the Right and Left sides of the Petal pieces, matching like fabrics. Sew along the long center side seam, right sides together.
- You will make two petals for Fabrics **A, B** and **E** and one petal each for Fabrics **F** and **G**.

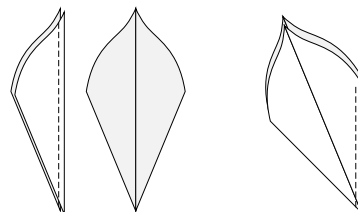


DIAGRAM 1

- Piece together Petals **E > F > B > A** along the side seams, right sides together.
- Stop sewing 1/4" away from the edge of the fabric at the top of the petal.
- Then, piece together Petals **A > B > G > E** in the same manner. Double-check orientation against illustrations to ensure that duplicate petals (and F/G) are across from each other.
- Now, take your two half flowers and sew RST at the straight edge, matching seams and stopping 1/4" away from outer edges of the petals. The center of the flower is open to reduce bulky seams and will be covered by the appliqué circle.



DIAGRAM 2

- Turn under the edges of your 3" Fabric **D** circle by $\frac{1}{4}$ " using the cut out center circle of the pattern template for smooth edges. Freezer paper method is recommended.
- Using the pressing template provided for petal edges go ahead and press under the outer edges of the flower by $\frac{1}{4}$ ". (If you accidentally sewed until the edge of the fabric instead of stopping $\frac{1}{4}$ " away from the edge then unpick the last couple stitches to turn the fabric easily.) Clip the fabric if necessary to follow the curve of the template. Consider using small dots of washable glue to keep fabric pressed under.

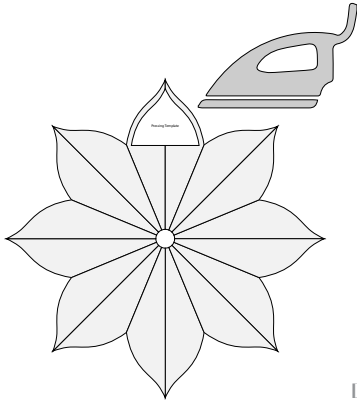


DIAGRAM 3

- Center the flower on a 31" diameter Fabric **C** circle, smooth and pin in place. Blanket stitch around the edges of the flower and stay stitch the center raw edges down.
- Cut out two (2) circles of cotton batting that measure larger than the 31" circles and smooth Fabric **C** circles right sides up over the batting to prepare for quilting. Quilt through all side seams and center petal seams of the flower straight through to the edge of the circle.
- Quilt your bottom piece in the same manner, marking lines through the center of the circle, use the top piece as a guide for line placement.
- Center your Fabric **D** circle over the center of the flower, covering the raw edges, and pin (or glue baste) in place. Blanket stitch around the edges of the center circle.
- Press and trim excess batting. Serge (or overcast stitch) the edges of the circles.

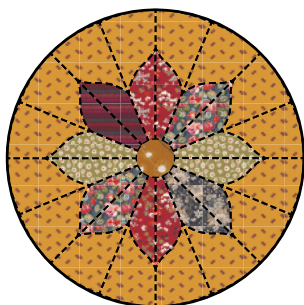
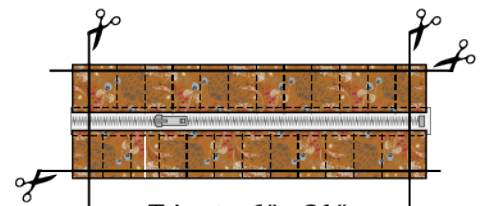
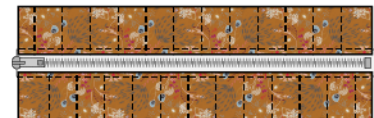


DIAGRAM 4

- Cut batting strips a little larger than the three Fabric **D** rectangles and quilt them with simple vertical lines every inch (or choose your own quilting motif. You can also quilt after pieces are sewn together in a loop if you prefer.) After quilting trim off excess batting.
- Measure and trim the 77" long piece to 75" (This is done after quilting to account for any shrinkage due to dense quilting.)
- Take a 3 $\frac{1}{2}$ " x 22" rectangle and sew it, RST, to one of the edges of the zipper. Press seam open and top stitch approx. $\frac{1}{4}$ " away from seam. Do the same with the other rectangle and side of the zipper. Trim the piece so that it measures 6" x 21" (making sure to keep zipper pull taped in center so it doesn't fall off during handling).
- Sew the ends of the zipper piece and long side pieces RST at $\frac{1}{2}$ " seam allowance to make a loop. Press seam allowances away from zipper and top stitch $\frac{1}{4}$ " away from the seam on the band.



Trim to 6" x 21"

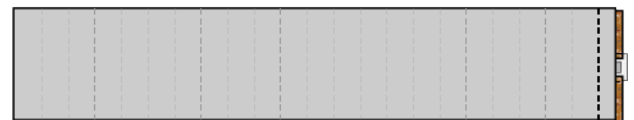
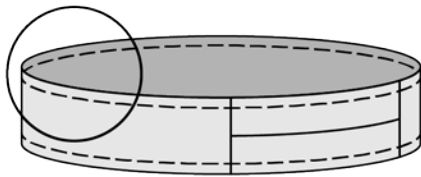


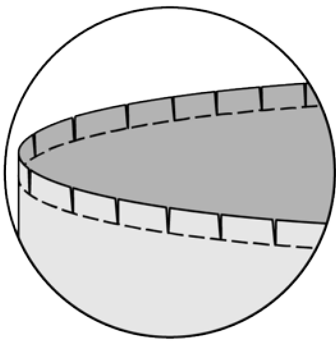
DIAGRAM 5

- Sew just inside the 1/2" seam allowance on both sides of the band and clip to staystitching about every inch.
- Align the band and bottom circle, RST, with the circle on bottom and band on top. Pin or use plastic clips to match up edges. Sew together, going a couple inches at a time, then stop with needle down and lift presser foot to adjust fabric so the bottom circle is always flat and the band edge is flush with the edge. Make sure to sew so that no stay-stitching is visible and backstitch securely when finished.

Stay-stitch



Clip



Pin & Sew

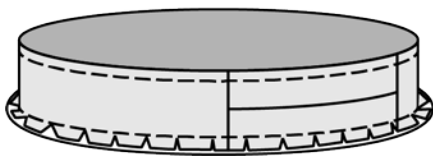


DIAGRAM 6

- Repeat this process with the top circle and the other side of the band. Make sure the that zipper is at least a couple inches open while sewing. When finished sewing open the zipper completely and flip the cushion right side out.
- Stuff with poly-fill until desired loft is reached and zip closed. Enjoy your new floor cushion!

Optional:

- Make a pillow form from muslin fabric from two 31" circles and a band sewn from a strip that is 6" x 95". (1/2" s.a.) Sew the edges together as before, but leave a 6" opening on one side of the circles. Flip right side out and stuff with poly-fil, then sew the opening closed by hand with a ladder stitch. Now stuff your pillow form inside your quilted floor pillow cover. Voila! You are finished, congratulations!



artgalleryfabrics.com

NOTE: While all possible care has been taken to ensure the accuracy of this pattern, We are not responsible for printing errors or the way in which individual work varies. Please read instructions carefully before starting the construction of this quilt. If desired, wash and iron your fabrics before starting to cut.

©2018 Courtesy of Art Gallery Quilts LLC. All Rights Reserved.

