

XXXXXX

A tote bag with a red and white geometric pattern, featuring a large pink peony and orange tulips. The bag has a light-colored handle and is set against a dark blue background.

XXXXXXXXXXXXXXXXXXXX



Eugene

Virtuosa
FABRICS DESIGNED BY *barij*



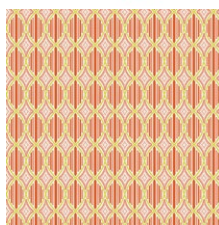
INTENSE DRAMATIST



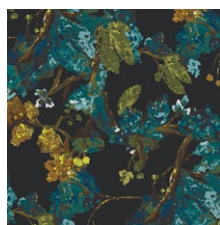
VRT-21800
PRIMA FLORA CALMA



VRT-21804
EPISODIC BLOOMS AQUA



VRT-21801
OVERTURE FIAMMA



VRT-21809
CINESE MYSTERY



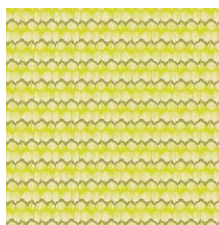
VRT-21803
CHORUS MIRROR TERRA



VRT-21805
THEATRE RESONANCE IRIS



VRT-21807
CADENCE WINDS TANG



VRT-21806
HARMONIOUS ACT CITRUS



VRT-21802
FLOWERDRAMA MATTINA



VRT-21808
PLOT'S FIORI CLASSICO

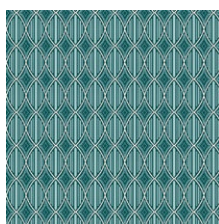
LAMBERT PLAYWRIGHT



VRT-11800
PRIMA FLORA AMORE



VRT-11804
EPISODIC BLOOMS ROSA



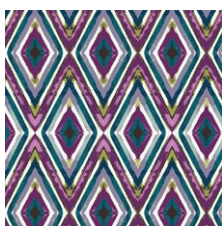
VRT-11801
OVERTURE SERENITA



VRT-11809
CINESE ROMANCE



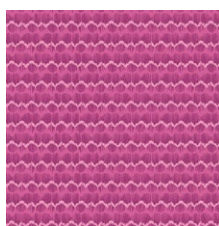
VRT-11803
CHORUS MIRROR VIOLA



VRT-11805
THEATRE RESONANCE PLUM



VRT-11807
CADENCE WINDS OLIVA



VRT-11806
HARMONIOUS ACT DOLCE



VRT-11802
FLOWERDRAMA NOTTE



VRT-11808
PLOT'S FIORI FRESCO



FEEL THE DIFFERENCE © 2018 Courtesy of Art Gallery Quilts LLC. All Rights Reserved.

Eugene

FINISHED SIZE | 15' x 18'

FABRIC REQUIREMENTS

Fabric A	VRT-21803	1yd
Fabric B	PE-458	1yd

LINING FABRIC
PE-458 *(Included)*

CUTTING DIRECTIONS

*¼" seam allowances are included.
WOF means width of fabric.*

- Two (2) of Template 1 from Fabric A
- Two (2) of 23" x 1" strip from Fabric B (Handle)
- One (1) 10" x 6 ½" square from Fabric A (Pocket 1)
- One (1) 11" x 10" square from Fabric B (Pocket 2)

BLOCK CONSTRUCTION

Sew all rights sides together with ¼" seam allowance.

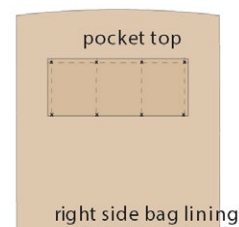
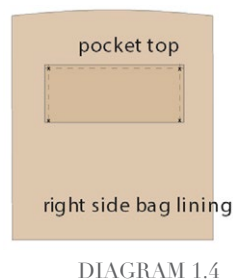
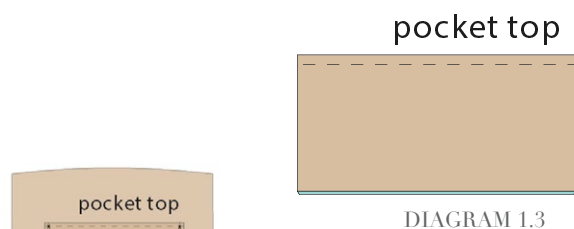
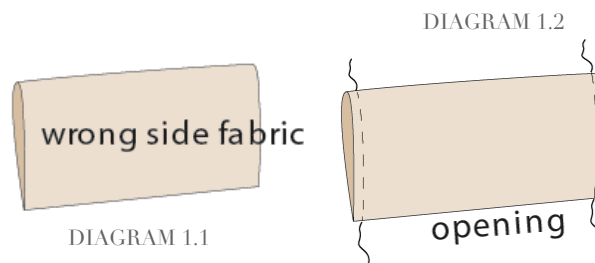
- Take Fabric A and cut two pieces of Template 1.
- Quilt as desired before assembling your tote.

LINING & DROP IN POCKET

Sew rights sides together.

Drop in pocket:

- Take the 10" x 6 ½" Fabric A piece and place it on top of one piece of your lining fabric. (diagram 1.1)
- Take the edges of Fabric A and fold them in and stitch right on the edge leaving the top part unsewn. (diagram 1.2)
- If you want, create a contrasting color binding detail on the top part of your pocket or a decorative stitch. (diagram 1.3)
- Flip the pocket up into its rightful place.
- Edge-stitch the right and left sides of the pocket. Backstitch to lock the seams in place, at the beginning and end of each stitching line. (diagram 1.4)
- Make a vertical stitching line through the pocket and lining fabric at each of the intervals. This will create 3 drop in pockets. (diagram 1.5)
- Create a quilting motif on the pocket if desired.



x x x x x x x x x x x x x x x x x x x

- Working from wrong side of front lining exterior, fold zippered pocket lining up to meet the top raw edge of the lining exterior.
- Pin in place.
- Working from right side of front lining exterior, sew each Zippered Pocket Lining edge using a $\frac{1}{4}$ " seam allowance, folding lining exterior out of the way making sure not to sew it.



-
- A technical diagram showing a zipper pull (a red circle with a white tab) attached to a zipper tape. The tape is shown with a dashed line indicating its path. The zipper teeth are shown as a series of interlocking V-shapes. The diagram is labeled with 'a' and 'b' at the top, and 'c' and 'd' on the right side.

DIAGRAM 2.2



- Sew front and back tote bag with right sides together at 2cm seam allowance. Also sew the two lining pieces together but leave a small unsewn portion at the bottom in order to pull right side of the bag through.
- We want to box the interior corners to get a really nice flat bottom on the bag; this way the tote bag will have more body.
- At the corners of your tote draw with a air eraseable pen a 3" x 3" square on the wrong side of the fabric. Repeat this process for your front and back tote.(Diagram 2.1)
- Take the exterior of the bag (wrong side out) and pinch apart the two layers of the tote to get a little triangle on one corner. Flatten it down a little bit and make sure the top and bottom seams are lined up. Hold it tight.

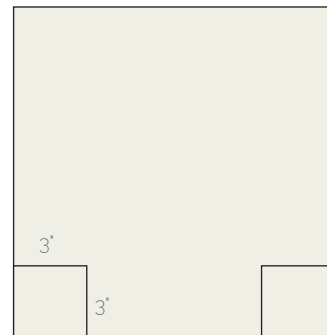


DIAGRAM 3.1

- Points of the squares you drew on each side of the tote should match up. Pin in place and stitch on the line. Repeat this for the other side of your tote as well as your lining pieces.(Diagram 2.2)

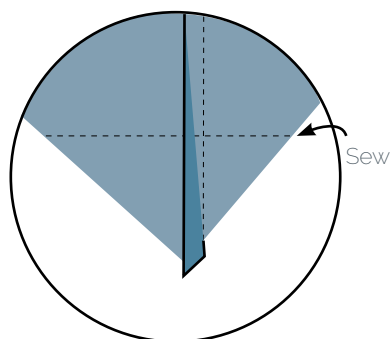


DIAGRAM 3.2

Sewing the Lining to the Exterior

- Place exterior of bag inside lining making sure right sides are touching and that the straps are out of the way. Pin lining to the exterior of the bag and sew all the way around the top of your bag at 1/2" seam allowance.
- Pull exterior of bag through the unsewn portion in the lining. Handstitch or machine stitch unsewn portion closed.
- At the corners of your tote draw with a air eraseable pen a 3" x 3" square on the wrong side of the fabric. Repeat this process for your front and back tote.(Diagram 2.1)
- Take the exterior of the bag (wrong side out) and pinch apart the two layers of the tote to get a little triangle on one corner. Flatten it down a little bit and make sure the top and bottom seams are lined up. Hold it tight.
- Follow the instructions for the Grommets placements for the tote.
- After you have placed the grommets, insert one cord on the two grommets and measure the length you want for your tote and make a tight knot at the end
- Repeat the same process for the other cord



artgalleryfabrics.com

NOTE: While all possible care has been taken to ensure the accuracy of this pattern, We are not responsible for printing errors or the way in which individual work varies. Please read instructions carefully before starting the construction of this quilt. If desired, wash and iron your fabrics before starting to cut.

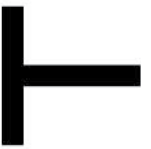
© 2018 Courtesy of Art Gallery Quilts LLC. All Rights Reserved.

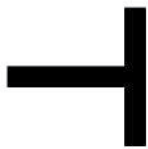
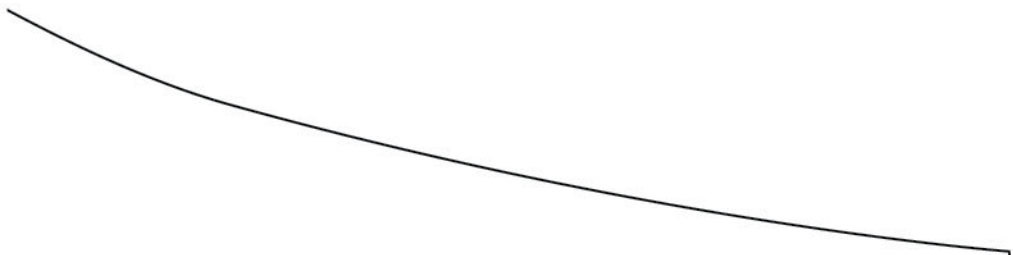
F

TT

1

XX







XX

FF

T

5



6