

Artaneuse



Artaneuse

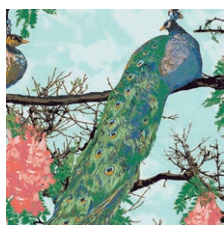
QUILT DESIGNED BY KATARINA ROCCELLA

Decadence

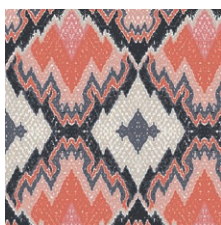
FABRICS DESIGNED BY KATARINA ROCCELLA



DEMURE



DCD-21605
FLORID PEACOCKS DEMURE



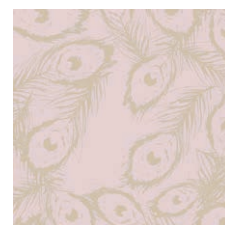
DCD-21611
BROCADE MIRAGE FLAMME



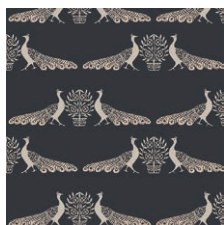
DCD-21601
ROCAILLE SURFACE SOFT



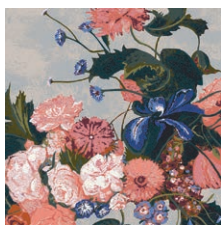
DCD-21608
COQUILLE DAMASK CORAL



DCD-21609
FEATHERS ROYAL ORMOLU



DCD-21602
REGAL IMPRESSIONS
CHINOISE



DCD-21600
GRACEFUL BOUQUET
FONDANT



DCD-21604
CASTLE MEADOW SPRING

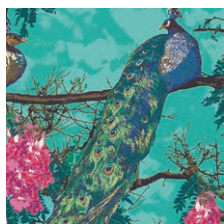


DCD-21606
OPULENT PLAID GEMS



DCD-21612
STRIPED FLEUR PARADIS

LUSH



DCD-31605
FLORID PEACOCKS LUSH



DCD-31613
BEADED POSY LUSTER



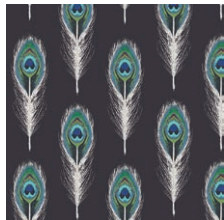
DCD-31601
ROCAILLE SURFACE ALIVE



DCD-31608
COQUILLE DAMASK TEAL



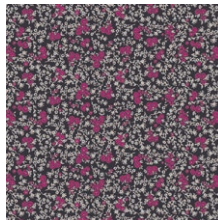
DCD-31610
FAIR PEONIES TRACED



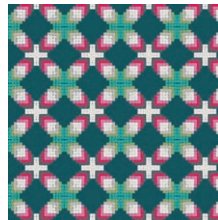
DCD-31603
PLUMAGE MIRRORS NOIR



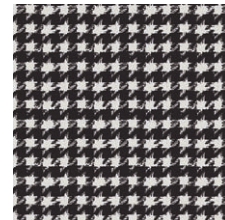
DCD-31600
GRACEFUL BOUQUET GLAZE



DCD-31604
CASTLE MEADOW BAIE



DCD-31614
ORNATE PARQUETRY JEWELLED



DCD-31607
HOUNDSTOOTH XIV ONYX



Tartaneuse

FINISHED SIZE | 76 ½" x 76 ½"

FABRIC REQUIREMENTS

Fabric A	DCD - 31608	1 ½ yd.
Fabric B	DCD - 31601	½ yd.
Fabric C	PE - 413	1 yd.
Fabric D	DCD - 31610	1 yd.
Fabric E	DCD - 31607	1 ½ yd.
Fabric F	DCD - 21605	¾ yd.
Fabric G	DCD - 21600	¾ yd.
Fabric H	DCD - 31600	7/8 yd.
Fabric I	DCD - 31613	¾ yd.

BACKING FABRIC

DCD - 21612 5 yds. *(Suggested)*

BINDING FABRIC

DCD - 31612 (Fabric **I**) *(Included)*

CUTTING DIRECTIONS

*¼" seam allowances are included.
WOF means width of fabric.*

- Sixty four (64) 1 ½" x 1 ½" squares from fabric **A**.
- Sixteen (16) 2 ½" x 2 ½" squares from fabric **B**.
- Thirty four (34) 5 ¾" x 5 ¾" squares from fabric **C**.
- Thirty four (34) 5 ¾" x 5 ¾" squares from fabric **D**.
- Thirty two (32) 12 ½" x 4 ½" rectangles from fabric **E**.
- Four (4) 12 ½" x 12 ½" squares from fabric **F**.
- Five (5) 12 ½" x 12 ½" squares from fabric **G**.
- Sixteen (16) 12 ½" x 4 ½" rectangles from fabric **H**.

CONSTRUCTION

Sew all rights sides together with ¼" seam allowance.

Eight at a time Half Square Triangles (HST)

- Take thirty four (34) 5 ¾" x 5 ¾" squares from fabric **C** and thirty four (34) 5 ¾" x 5 ¾" squares from fabric **D**.
- Pair every square from fabric **C** with every square from fabric **D**.
- Place them face to face.
- Draw diagonal lines.
- Stitch at ¼" from each side of the drawn lines.
- Following Diagram 1, cut on the red lines.
- As a result you get 8 HST per pair, so in total you should have 272 HST:

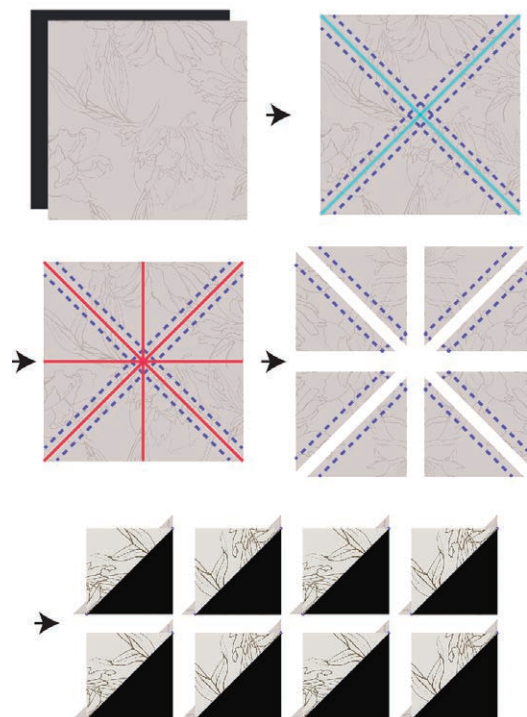


DIAGRAM 1

Block A

- Take Sixty four (64) $1\frac{1}{2}' \times 1\frac{1}{2}'$ squares from fabric **A**, Sixteen (16) $2\frac{1}{2}' \times 2\frac{1}{2}'$ squares from fabric **B**, and one hundred eight (128) HST from fabrics **C** and **D**.
- Make sixteen (16) **Block A**.
- For fabric placement and attachment follow Diagram 2.



DIAGRAM 2

Strip a and Strip b:

- Take the rest of the HST from fabrics **C** and **D**.
- Each block consists of 6 HST, and both strips start and finish with fabric **C** the only difference is that **Strip a** goes in one direction and **Strip b** in the other..
- Make twelve (12) **Strip a** and twelve (12) **Strip b**.
- For fabric placement and attachment follow Diagram 3.

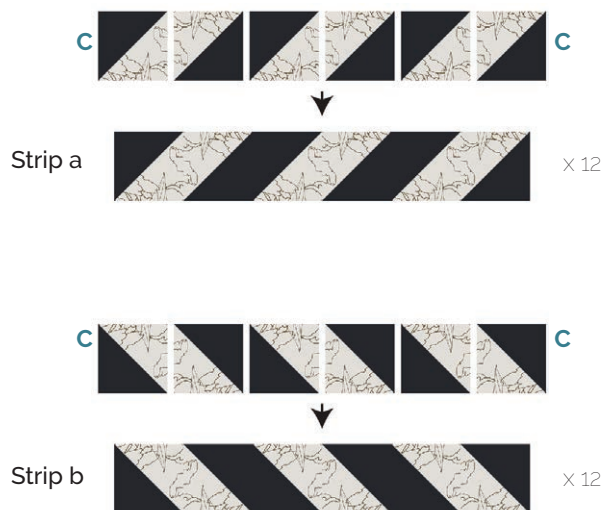


DIAGRAM 3

Block B

- Take eight (8) $12\frac{1}{2}' \times 4\frac{1}{2}'$ from fabric **E**, and four (4) **Strip a**.

Make four (4) **Block B** joining the pieces as follows:

- **E** > **Strip a** > **E**.

Block C

- Take four (4) $12\frac{1}{2}' \times 4\frac{1}{2}'$ from fabric **E**, four (4) $12\frac{1}{2}' \times 4\frac{1}{2}'$ from fabric **H**, and four (4) **Strip a**.
- Make eight (8) **Block C** joining the pieces as follows:
- **E** > **Strip a** > **H**.

Block D

- Take eight (8) $12\frac{1}{2}' \times 4\frac{1}{2}'$ from fabric **E**, and four (4) **Strip b**.
- Make four (4) **Block D** joining the pieces as follows:
- **E** > **Strip b** > **E**.

Block E

- Take four (4) $12\frac{1}{2}' \times 4\frac{1}{2}'$ from fabric **E**, four (4) $12\frac{1}{2}' \times 4\frac{1}{2}'$ from fabric **H**, and four (4) **Strip b**.
- Make eight (8) **Block E** joining the pieces as follows:
- **E** > **Strip b** > **H**.

Block B x 4



Block C x8



Block D x 4



Block E x8



DIAGRAM 4

TOP ASSEMBLY

*1/4" seam allowances are included.
WOF means width of fabric.*

- Assemble the **Blocks A, B, C, D** and **E**, the four (4) 12½" x 12½" squares from fabric **F** and five (5) 12½" x 12½" squares from fabric **G** in the following rows.
- For fabric placement and attachment follow Diagram 5.

- Row 1: **A** > **B** > **A** > **C** > **A** > **B** > **A**
- Row 2: **D** > **G** > **E** > **F** > **E** > **G** > **D**
- Row 3: **A** > **C** > **A** > **C** > **A** > **C** > **A**
- Row 4: **E** > **F** > **E** > **G** > **E** > **F** > **E**
- Row 5: **A** > **C** > **A** > **C** > **A** > **C** > **A**
- Row 6: **D** > **G** > **E** > **F** > **E** > **G** > **D**
- Row 7: **A** > **B** > **A** > **C** > **A** > **B** > **A**



DIAGRAM 5

QUILT ASSEMBLY

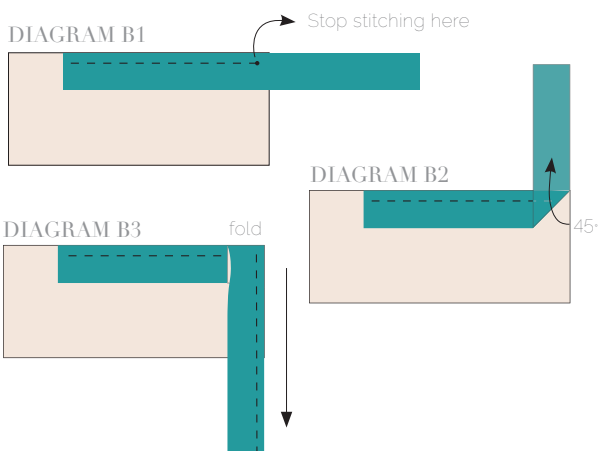
Sew rights sides together

- Place BACKING FABRIC on a large surface wrong side up. Stretch it with masking tape against that surface.
- Place BATTING on top of backing fabric.
- Place TOP on top of the batting with right side facing up. Smooth away wrinkles using your hands.
- Pin all layers together and baste with basting thread, using long stitches. You can also use safety pins to join the layers.
- Machine or hand quilt starting at the center and working towards the corners. Remember that quilting motifs are a matter of personal preference. Have fun choosing yours!
- After you finished, trim excess of any fabric or batting, squaring the quilt to proceed to bind it.

BINDING

Sew rights sides together.

- Cut enough strips 1 ½" wide by the width of the fabric to make a final strip 314" long. Start sewing the binding strip in the middle of one of the sides of the quilt, placing the strip right side down and leaving an approximated 5" tail. Sew with ¼" seam allowance (using straight stitch), aligning the strip's raw edge with the quilt top's raw edge.
- Stop stitching ¼" before the edge of the quilt (**DIAGRAM B 1**). Clip the threads. Remove the quilt from under the machine presser foot. Fold the strip in a motion of 45° and upward, pressing with your fingers (**DIAGRAM B2**). Hold this fold with your finger, bring the strip down in line with the next edge, making a horizontal fold that aligns with the top edge of the quilt (**DIAGRAM B3**). Start sewing at ¼" of the border, stitching all the layers. Do the same in the four corners of the quilt.



artgalleryfabrics.com

NOTE: While all possible care has been taken to ensure the accuracy of this pattern, We are not responsible for printing errors or the way in which individual work varies. Please read instructions carefully before starting the construction of this quilt. If desired, wash and iron your fabrics before starting to cut.

© 2018 Courtesy of Art Gallery Quilts LLC. All Rights Reserved.