

X
X
X
X
X
X
X
X
X
X
X
X

This image displays a complex quilt panel with a repeating geometric pattern. The design is composed of interlocking diamonds and squares, creating a lattice-like structure. The fabrics used include: solid black and white; various floral prints in shades of pink, red, and teal; a peacock feather pattern in black and white; and geometric patterns in orange, black, and white. The overall effect is a vibrant, symmetrical, and intricate composition.

XXXXXXXXXXXXXXXXXXXXXXXXXXXX



POSSIBILITIES

QUILT DESIGNED BY AGFstudio

Decadence

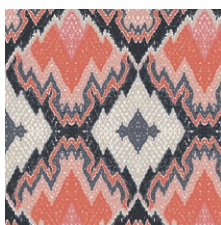
FABRICS DESIGNED BY KATARINA ROCCELLA



DEMURE



DCD-21605
FLORID PEACOCKS DEMURE



DCD-21611
BROCADE MIRAGE FLAMME



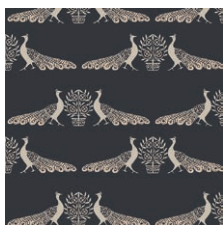
DCD-21601
ROCAILLE SURFACE SOFT



DCD-21608
COQUILLE DAMASK CORAL



DCD-21609
FEATHERS ROYAL ORMOLU



DCD-21602
REGAL IMPRESSIONS
CHINOISE



DCD-21600
GRACEFUL BOUQUET
FONDANT



DCD-21604
CASTLE MEADOW SPRING

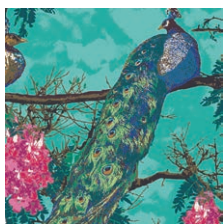


DCD-21606
OPULENT PLAID GEMS



DCD-21612
STRIPED FLEUR PARADIS

LUSH



DCD-31605
FLORID PEACOCKS LUSH



DCD-31613
BEADED POSY LUSTER



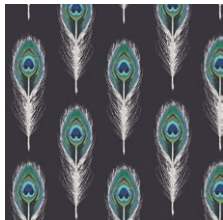
DCD-31601
ROCAILLE SURFACE ALIVE



DCD-31608
COQUILLE DAMASK TEAL



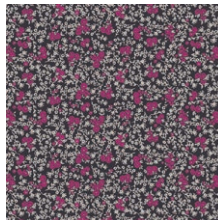
DCD-31610
FAIR PEONIES TRACED



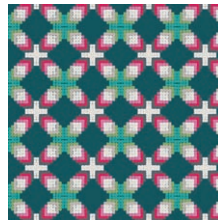
DCD-31603
PLUMAGE MIRRORS NOIR



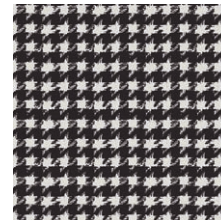
DCD-31600
GRACEFUL BOUQUET GLAZE



DCD-31604
CASTLE MEADOW BAIE



DCD-31614
ORNATE PARQUETRY JEWELLED



DCD-31607
HOUNDSTOOTH XIV ONYX



FEEL THE DIFFERENCE © 2018 Courtesy of Art Gallery Quilts LLC. All Rights Reserved.

POSSIBILITIES

FINISHED SIZE | 68" x 76"

FABRIC REQUIREMENTS

Fabric A	DCD-21600	5/6 yd.
Fabric B	DCD-21609	5/6 yd.
Fabric C	DCD-31600	1 1/2 yd.
Fabric D	DCD-31603	5/8 yd.
Fabric E	PE-419	3 1/2 yd.
Fabric F	DCD-31605	5/8 yd.
Fabric G	DCD-21601	1/4 yd.
Fabric H	PE-428	5/8 yd.
Fabric I	DCD-31613	1/3 yd.
Fabric J	DCD-21611	1 1/8 yd.

BINDING FABRIC

Fabric **J** DCD-21611 (Included)

BACKING FABRIC

DCD-31610 4 3/4 yds. (Suggested)

CUTTING DIRECTIONS

1/4" seam allowances are included.
WOF means width of fabric.

- Fourteen (14) 2 1/2" x 8 1/2" strip from fabric **A** and **B**.
- Twenty Eight (28) 2 1/2" x 6 1/2" strips from fabric **A** and **B**.
- Five (5) 4 1/2" square from Fabric **C**.
- Seventeen (17) 2 1/2" x 8 1/2" strips from fabric **C**.
- Twenty Four (24) 2 1/2" x 6 1/2" strips from fabric **C**.
- Twenty Four (24) 2 1/2" x 4 1/2" strips from fabric **C**.
- Twenty Eight (28) 1 1/2" x 2 1/2" strips from fabric **C** and **E**.
- Twenty Eight (28) 1 1/2" x 6 1/2" strips from fabric **C** and **E**.
- Twelve (12) 2 1/2" x 8 1/2" strips from fabric **E**.
- Twelve (12) 2 1/2" x 4 1/2" strips from fabric **E**.
- Ninety Six (96) 3 1/2" squares from fabric **E**.

- Twenty Four (24) 2 1/2" x 12 1/2" strips from fabric **E**.
- Twenty Four (24) 2 1/2" x 16 1/2" strips from fabric **E**.
- Seventeen (17) 6 1/2" square from fabric **D**.
- Fourteen (14) 6 1/2" squares from fabric **F**.
- Fourteen (14) 2 1/2" x 4 1/2" strips from fabric **G**.
- Twelve (12) 4 1/2" x 6 1/2" rectangle from fabric **H**.
- Six (6) 2 1/2" x 8 1/2" strips from fabric **H**.
- Six (6) 2 1/2" x 4 1/2" strips from fabric **H**.
- Ten (10) 4 1/2" squares from fabric **I**.
- Seventeen (17) 6 1/2" squares from fabric **J**.

CONSTRUCTION

Sew all rights sides together with 1/4" seam allowance.

- Take your 3 1/2" squares from fabric **E** and with a fabric marking pen draw a diagonal line from one end to the other or you can use your iron to create the diagonal mark.
- Place 3 1/2" squares on opposite corners right side down to a 6 1/2" square from fabric **D** and sew on both diagonals.

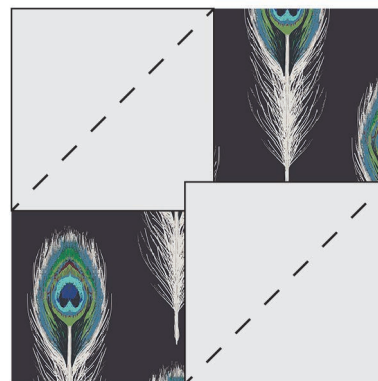
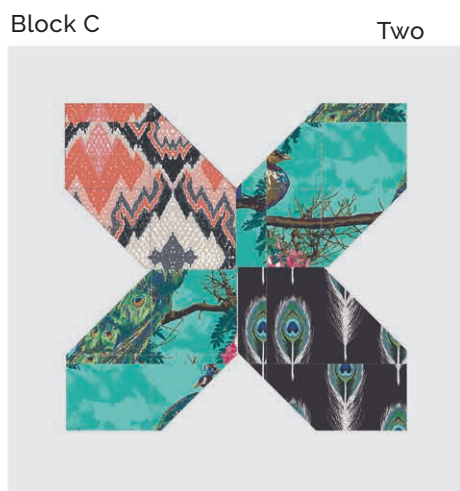
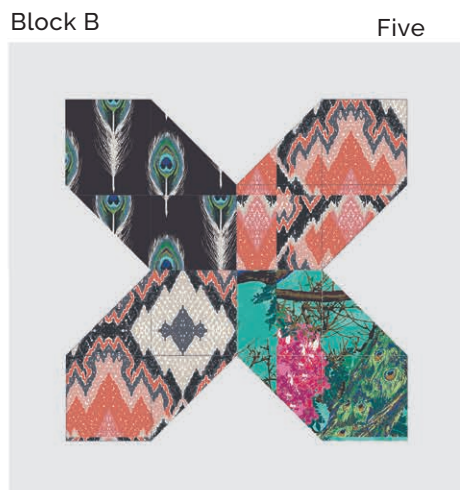
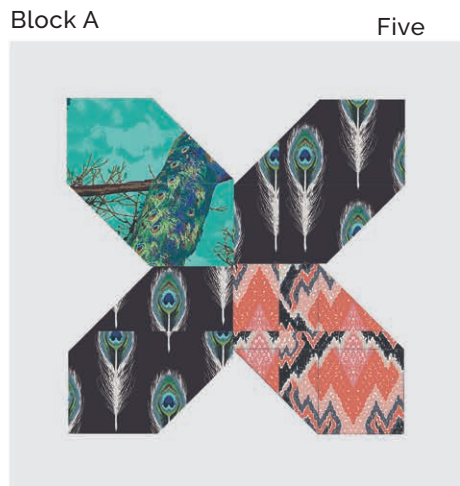


DIAGRAM 1

- Trim excess seam allowance to 1/4" and press.
- Repeat this process with all your 6 1/2" squares from Fabric **D**, **F**, and **J** and your 3 1/2" squares from Fabric **E**.

- Sew your corner square blocks together following the Block Diagram. Make five of Block A and B and two of Block C.
- Sew your $2\frac{1}{2}' \times 12\frac{1}{2}'$ and $2\frac{1}{2}' \times 16\frac{1}{2}'$ border strips around your blocks. (Diagram 2)

Block Diagram



- To make your bordered square blocks take a $4\frac{1}{2}'$ square from fabric **I** and sew your $2\frac{1}{2}' \times 4\frac{1}{2}'$ and $2\frac{1}{2}' \times 8\frac{1}{2}'$ border strips to your square.
- Repeat this process with your remaining $4\frac{1}{2}'$ squares from fabric **I** and **C** and your border strips from fabric **C**, **E** and **H**. (Diagram 3)



- To make your remaining units take a $2\frac{1}{2}' \times 4\frac{1}{2}'$ rectangle from fabric **C** and sew the $1\frac{1}{2}' \times 2\frac{1}{2}'$ and $1\frac{1}{2}' \times 6\frac{1}{2}'$ border strips from Fabric **E**. (Diagram 4)



DIAGRAM 4

- Repeat this process with your remaining $2\frac{1}{2}' \times 4\frac{1}{2}'$ rectangles from Fabric **C** and **G** and your border strips from Fabric **E** and **C**
- Then sew a $2\frac{1}{2}' \times 6\frac{1}{2}'$ strip to each side and a $2\frac{1}{2}' \times 8\frac{1}{2}'$ strip on top to come your blocks. You should create fourteen of unit 1 and 2. (Diagram 5)

Unit 1



Unit 2



DIAGRAM 5



- Now take a $4\frac{1}{2}' \times 6\frac{1}{2}'$ rectangle from Fabric H and sew the $2\frac{1}{2}' \times 6\frac{1}{2}'$ and $2\frac{1}{2}' \times 8\frac{1}{2}'$ border pieces to get a piece that looks like Diagram 6. (Make twelve of these blocks)



DIAGRAM 6

- Now it's time to assemble the quilt follow the Quilt Assembly Diagram and sew your rows together.

TOP ASSEMBLY

*1/4" seam allowances are included.
WOF means width of fabric.*

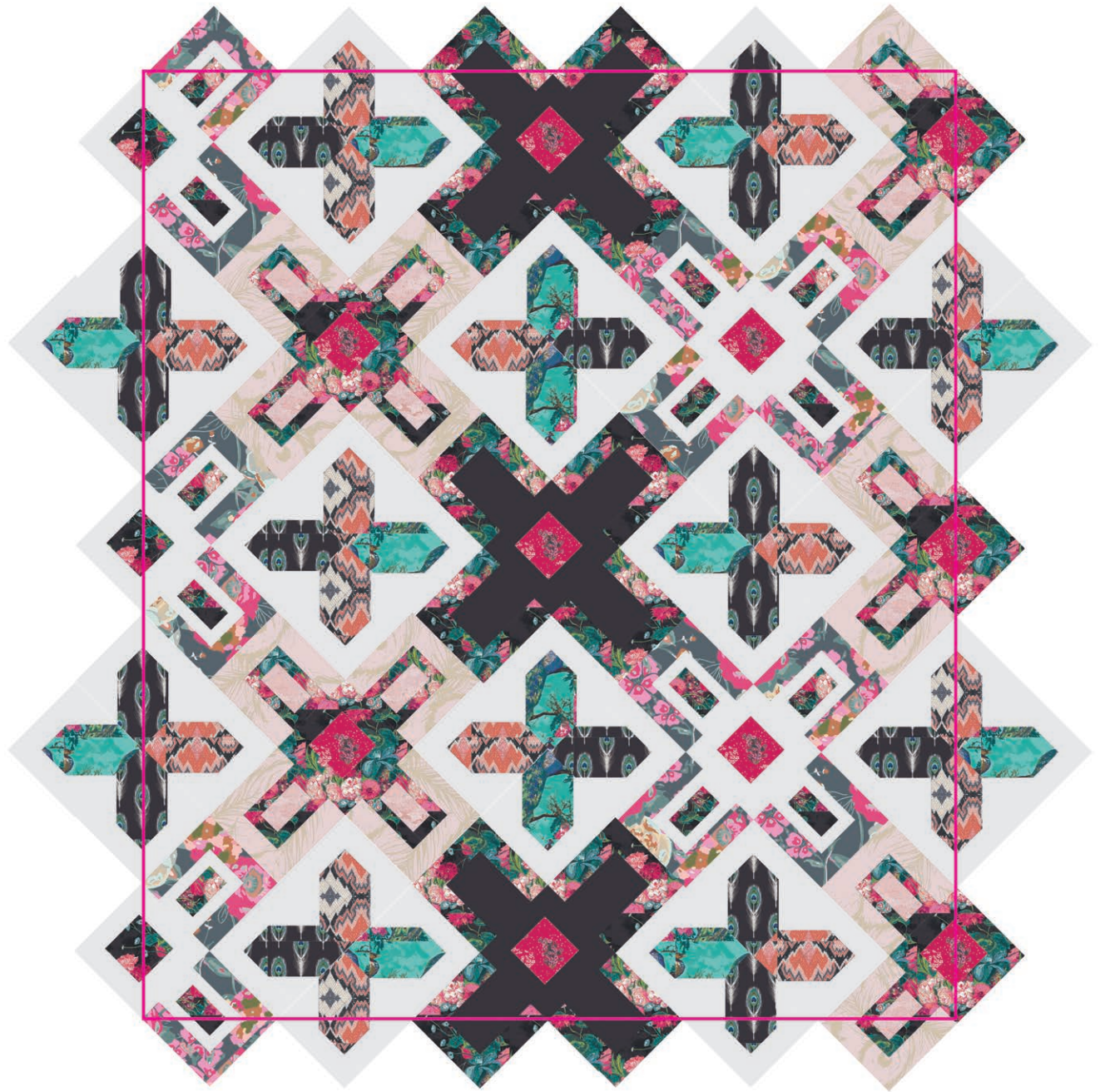


DIAGRAM 7

QUILT ASSEMBLY

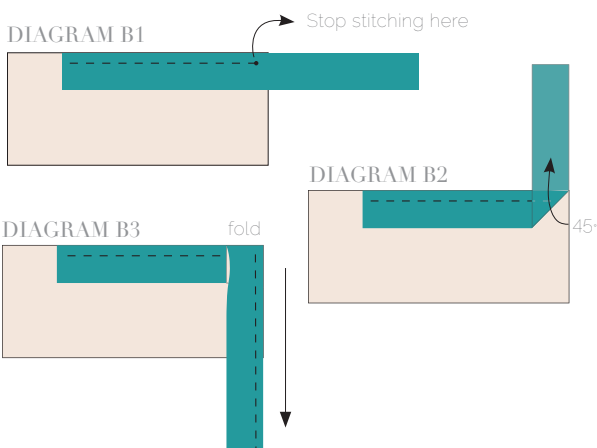
Sew rights sides together

- Place BACKING FABRIC on a large surface wrong side up. Stretch it with masking tape against that surface.
- Place BATTING on top of backing fabric.
- Place TOP on top of the batting with right side facing up. Smooth away wrinkles using your hands.
- Pin all layers together and baste with basting thread, using long stitches. You can also use safety pins to join the layers.
- Machine or hand quilt starting at the center and working towards the corners. Remember that quilting motifs are a matter of personal preference. Have fun choosing yours!
- After you finished, trim excess of any fabric or batting, squaring the quilt to proceed to bind it.

BINDING

Sew rights sides together.

- Cut enough strips 1 ½" wide by the width of the fabric **J** to make a final strip 298" long. Start sewing the binding strip in the middle of one of the sides of the quilt, placing the strip right side down and leaving an approximated 5" tail. Sew with ¼" seam allowance (using straight stitch), aligning the strip's raw edge with the quilt top's raw edge.
- Stop stitching ¼' before the edge of the quilt (**DIAGRAM B 1**). Clip the threads. Remove the quilt from under the machine presser foot. Fold the strip in a motion of 45° and upward, pressing with your fingers (**DIAGRAM B2**). Hold this fold with your finger, bring the strip down in line with the next edge, making a horizontal fold that aligns with the top edge of the quilt (**DIAGRAM B3**). Start sewing at ¼' of the border, stitching all the layers. Do the same in the four corners of the quilt.



artgalleryfabrics.com

NOTE: While all possible care has been taken to ensure the accuracy of this pattern, We are not responsible for printing errors or the way in which individual work varies. Please read instructions carefully before starting the construction of this quilt. If desired, wash and iron your fabrics before starting to cut.

© 2018 Courtesy of Art Gallery Quilts LLC. All Rights Reserved.