

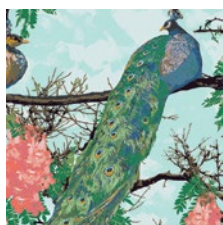
Coquette



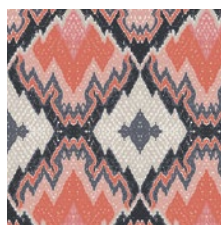
Decadence

FABRICS DESIGNED BY KATARINA ROCCELLA

DEMURE



DCD-21605
FLORID PEACOCKS DEMURE



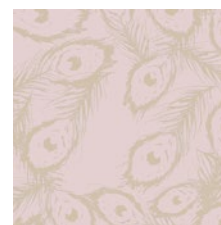
DCD-21611
BROCADE MIRAGE FLAMME



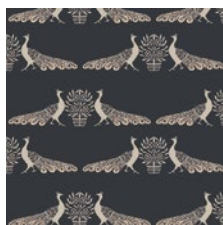
DCD-21601
ROCAILLE SURFACE SOFT



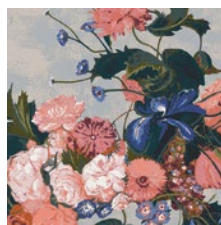
DCD-21608
COQUILLE DAMASK CORAL



DCD-21609
FEATHERS ROYAL ORMOLU



DCD-21602
REGAL IMPRESSIONS
CHINOISE



DCD-21600
GRACEFUL BOUQUET
FONDANT



DCD-21604
CASTLE MEADOW SPRING

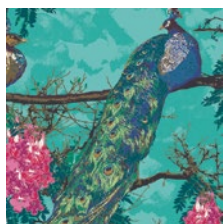


DCD-21606
OPULENT PLAID GEMS



DCD-21612
STRIPED FLEUR PARADIS

LUSH



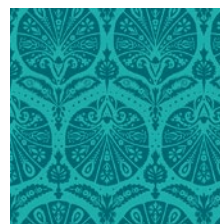
DCD-31605
FLORID PEACOCKS LUSH



DCD-31613
BEADED POSY LUSTER



DCD-31601
ROCAILLE SURFACE ALIVE



DCD-31608
COQUILLE DAMASK TEAL



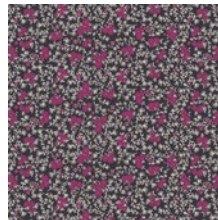
DCD-31610
FAIR PEONIES TRACED



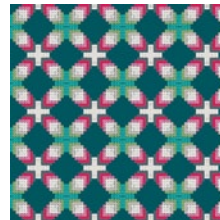
DCD-31603
PLUMAGE MIRRORS NOIR



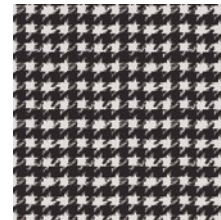
DCD-31600
GRACEFUL BOUQUET GLAZE



DCD-31604
CASTLE MEADOW BAIE



DCD-31614
ORNATE PARQUETRY JEWELLED



DCD-31607
HOUNDSTOOTH XIV ONYX



FEEL THE DIFFERENCE © 2018 Courtesy of Art Gallery Quilts LLC. All Rights Reserved.



FINISHED SIZE | 8" x 6" x 2"

FABRIC REQUIREMENTS

Fabric **A** DCD - 31610 ¼yd
 Fabric **B** PE-472 ¼yd
 Fabric **C** DCD - 21608 scraps

LINING FABRIC

Fabric **B** - PE-472

CUTTING DIRECTIONS

¼" seam allowances are included.
 WOF means width of fabric.

- Four (4) 3½" x 3½" square from Fabric **A**
- One (1) 21½" x 2½" rectangle strip from Fabric **A**
- One (2) 9½" x 2½" rectangle from Fabric **A**
- Two (2) 8½" x 1" strips from Fabric **A**
- Two (2) 6½" x 3½" rectangle from Fabric **B**
- One (2) 6½" x 2½" rectangle from Fabric **B**
- One (1) 5½" x 5" square from Fabric **B**

CONSTRUCTION

Sew all rights sides together with ¼" seam allowance.

- Follow the diagram below for the Flying Geese assembly from Fabric and and **B**.

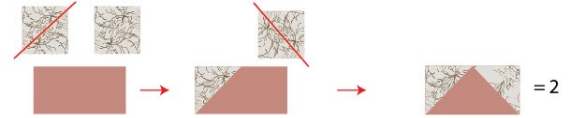


DIAGRAM 1

- Take a 6 ½" x 2 ½" rectangle from Fabric **B** and pair on each side one Flying Geese piece as in diagram below.
- Quilt as desired.



DIAGRAM 2

- Take your 21 ½" strip from Fabric **A** and pair it with your front assembled piece

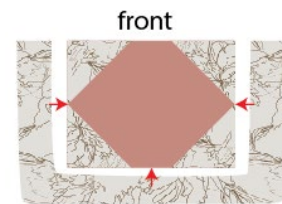


DIAGRAM 3

- Take your back piece and place it right sides facing with your front piece and sew around the edge.
- Pair two (2) 9 ½" x 2 ½" rectangle pieces, right sides placing a stabilizer on one side of your piece, in order to have a more sturdy effect.
- Sew your pieces leaving one side open
- Flip your piece and press

Strap



DIAGRAM 4

- With Fabric **C**, fussy cut your piece leaving about ¼" seam allowance all around.
- Trace the shape onto a Fabric **A** piece, this will be your back side.
- Place your back piece, wrong side facing up, fabric stabilizer and your fussy cat piece from Fabric **C** and zig zag stitch all around.



DIAGRAM 5

Assembling the Zipper

- Take your 8 ½" x 1" rectangle pieces from Fabric **A** and your lining piece and sandwich them in between you 8" zipper.
- Using a zipper foot, sew as close to the zipper teeth as possible
- Press fabric away from zipper and edge stitch the seam allowance to the lining, sewing as close the edge as possible.
- Repeat the same process for the other side of the zipper.
- Set aside

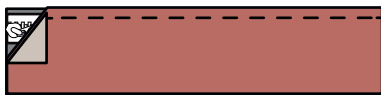


DIAGRAM 6

- Take your strap piece from Fabric **A** and your zipper piece and pin them on the back side of your clutch.
- Sandwich the zipper piece making sure you dont sew the other side of the zipper fabrics.

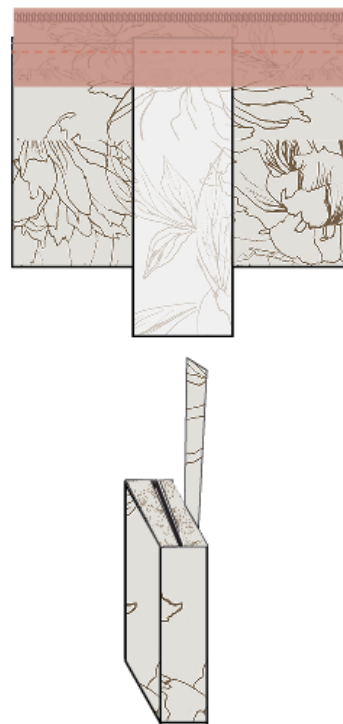


DIAGRAM 7

- Now, mark the spot where you will apply your magnetic closure on the front of your clutch and your bottom strap.
- In this case, we marked 1 ½" from the bottom up

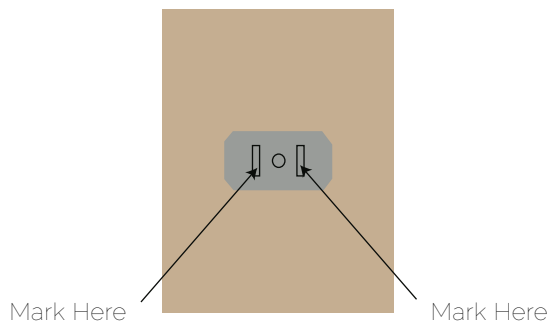
Drop-in Pocket

- Take the 5½" x 5" Fabric **A** piece and place it on top of one piece of your lining fabric.
- Stitch a decorative ¼" line from the folded edge
- Take the edges of Fabric **A** and fold them in and stitch right on the edge leaving the top part unsewn

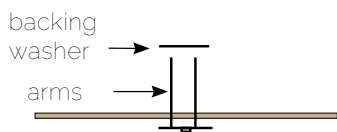


Applying the Magnetic Snap

- **Note:** A magnetic snap has two main components, a male side & a female side. The magnetic snap also comes with a backing washer for each component. When you purchase a magnetic snap, you will receive 4 metal pieces in total.
- Find the midpoint of your back and front lining pieces and measure down 2" and place a small 1"x 2" piece of ultra firm stabilizer. Iron stabilizer into place. Mark the 2" mark on top of stabilizer.
- Place a washer on this mark. Mark with a pencil two lines, from top and bottom tracing inside the rectangles on the washer. (Diagram 8)



- Remove the washer and make two slits on those marks using a small pair of sharp scissors.
- Place the arms of the male magnet clasp through the slits from the right side of the strip.



- Put the washer over the arms from the fusible side.
- Using pliers, fold each arm of the clasp out and down in opposite directions around the washer. Make the arms as flat as a possible.

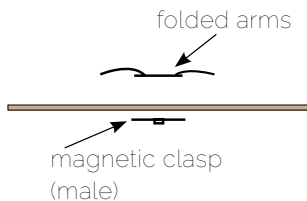
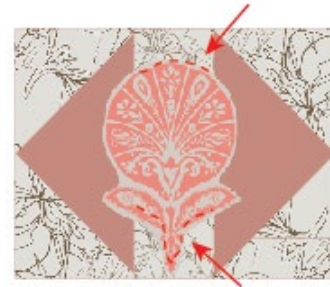


DIAGRAM 10

- To attach the female side of the magnetic snap repeat the same process following Diagram 8-10 with the female magnetic snap.
- Place exterior of bag inside lining making sure right sides are touching and that the straps are out of the way. Pin lining to the exterior of the bag and sew all the way around the top of your bag at 1/2" seam allowance.
- Pull exterior of bag through the unsewn portion in the lining.
- Handstitch or machine stitch unsewn portion.
- Now, handstitch your fussy cut piece on your strap, making sure you do an invisible stitch, covering the magnetic piece.
- Now, your clutch is complete!



artgalleryfabrics.com

NOTE: While all possible care has been taken to ensure the accuracy of this pattern, We are not responsible for printing errors or the way in which individual work varies. Please read instructions carefully before starting the construction of this quilt. If desired, wash and iron your fabrics before starting to cut.

© 2018 Courtesy of Art Gallery Quilts LLC. All Rights Reserved.