

Beauty Sheen



Beauty Sheen

QUILT DESIGNED BY AGF STUDIO



FABRICS DESIGNED BY BONNIE CHRISTINE

FOLK & FLORA



GTH-37500
FORAGED GARLAND PEONY



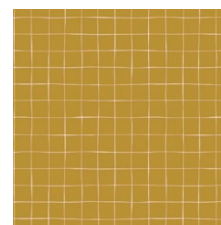
GTH-37509
SIMPLE LIVING



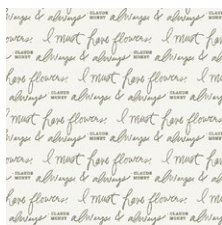
GTH-37507
FLORET ROOST PETAL



GTH-37504
COLLECTED STEMS BRIGHT



GTH-37506
AERIAL CLAY



GTH-37503
ALWAYS & ALWAYS THYME



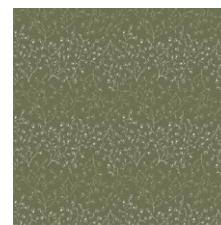
GTH-37501
BRISTLING DELICATE



GTH-37505
SWEET HARVEST OLIVE



GTH-37502
UNRULY TERRACE EARTH

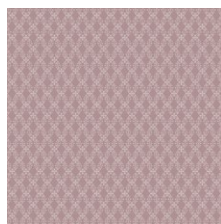


GTH-37508
VERDURE FIELD

PRESSED FLOWERS



GTH-47500
FORAGED GARLAND GOLDEN



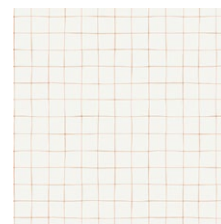
GTH-47510
CULTIVATED



GTH-47507
FLORET ROOST DELIGHT



GTH-47504
COLLECTED STEMS DUSTY



GTH-47506
AERIAL BLUSH



GTH-47503
ALWAYS & ALWAYS LUMINANCE



GTH-47501
BRISTLING BALMY



GTH-47505
SWEET HARVEST RARE



GTH-47502
UNRULY TERRACE SHADE



GTH-47508
VERDURE SPRUCE



FEEL THE DIFFERENCE © 2018 Courtesy of Art Gallery Quilts LLC. All Rights Reserved.



FINISHED SIZE | 74" x 56"

FABRIC REQUIREMENTS

Fabric A	GTH-37501	¾ yd.
Fabric B	GTH-47510	7/8 yd.
Fabric C	GTH-47507	½ yd.
Fabric D	GTH-37507	½ yd.
Fabric E	GTH-37500	½ yd.
Fabric F	GTH-47504	½ yd.
Fabric G	GTH-37509	½ yd.
Fabric H	GTH-37504	½ yd.
Fabric I	GTH-37505	½ yd.
Fabric J	FE-517	½ yd.
Fabric K	PE-426	5/8 yd.
Fabric L	PE-444	¾ yd.
Fabric M	PE-471	½ yd.
Fabric N	GTH-47501	¼ yd.
Fabric O	DEN-S-2007	¼ yd.

BACKING FABRIC
GTH-37501 3 yds. *(Suggested)*

BINDING FABRIC
GTH-47510 (Fabric **B**) *(Included)*

CUTTING PREPERATIONS

Fabric **A**

- Cut three (3) 2½" x WOF stripes.

Fabric **B**

- Cut Five (5) 2½" x WOF Stripes.

Fabric **C**

- Cut Five (5) 2½" x WOF Stripes.

Fabric **D**

- Cut Five (5) 2½" x WOF Stripes.

Fabric **E**

- Cut Five (5) 2½" x WOF Stripes.

Fabric **F**

- Cut Six (6) 2½" x WOF Stripes.

Fabric **G**

- Cut Three (3) 2½" x WOF Stripes.

Fabric **H**

- Cut Three (3) 2½" x WOF Stripes.

Fabric **I**

- Cut Three (3) 2½" x WOF Stripes..

Fabric **J**

- Cut Five (5) 2½" x WOF Stripes.

Fabric **K**

- Cut Seven (7) 2½" x WOF Stripes.

Fabric **L**

- Cut Eight (8) 2½" x WOF Stripes..

Fabric **M**

- Cut Six (6) 2½" x WOF Stripes.

Fabric **N**

- Cut Two (2) 2½" x WOF Stripes.

Fabric **O**

- Cut Two (2) 2½" x WOF Stripes..

CONSTRUCTION

Sew all rights sides together with ¼" seam allowance.

To make this bed spread, we will be constructing two different blocks and repeat each one of them four (4) times.. They will be Block **Y** and Block **X**. See Diagram below.

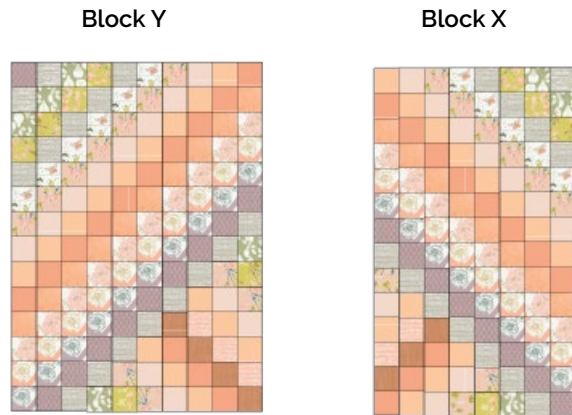


DIAGRAM 1

Block Y :

- This block will have Stripe sets, a, b, c, d, e, f, g, h.
- Gather stripes from fabrics G, F, M, L, K, J, E, D, C, B, A. Sew them together in that particular order . See Below

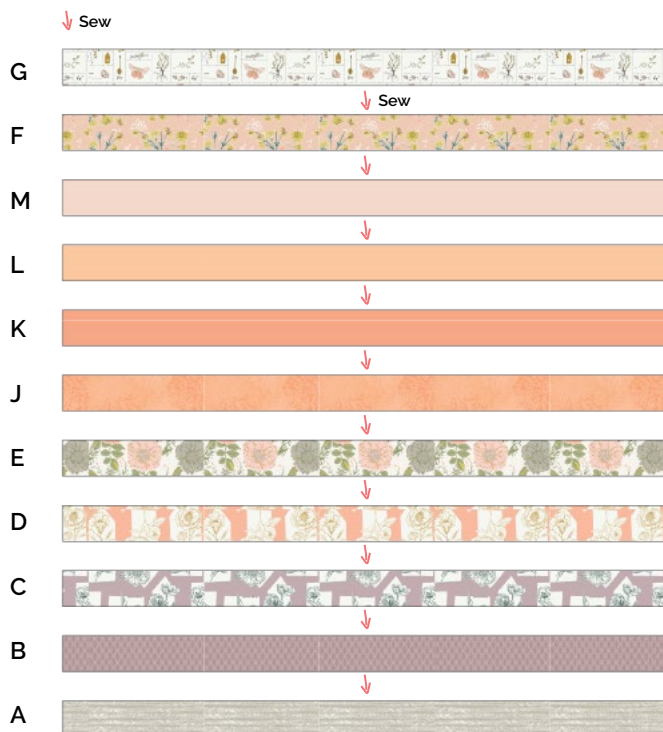


DIAGRAM 2

- Once you have all stripes sewn together, cut a stripes of 2.5" as show on diagram 3

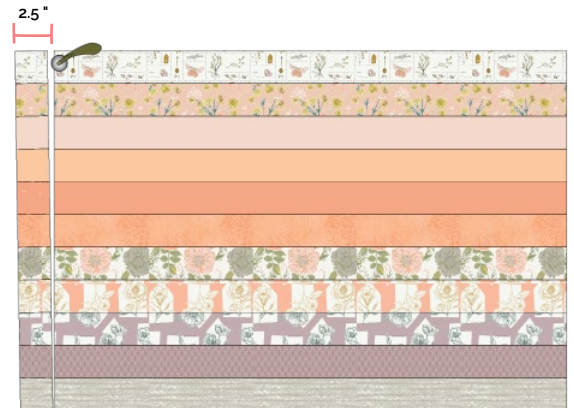


DIAGRAM 3

- You will end up with stripes which we will call Stripes set **a**, (We will need 10 stripes of Set a per block.)

Stripe Set a

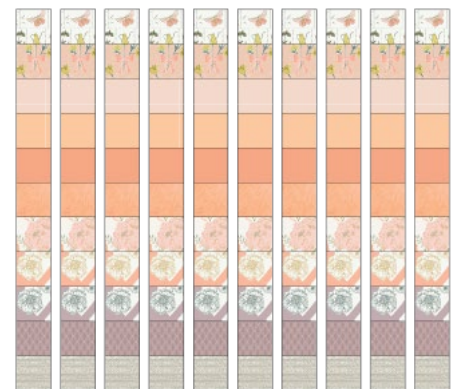


DIAGRAM 4

- Repeat the same steps with fabrics A, I, H, A, sew, cut at 2.5" and you will have Stripe Set **b**

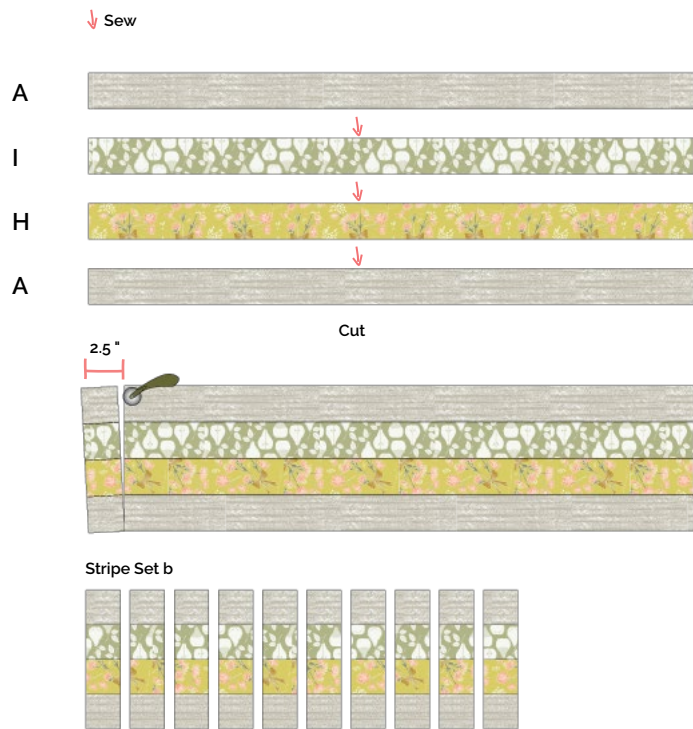


DIAGRAM 5

- Repeat the same steps with fabrics F, H, sew, cut at 2.5" and you will have Stripe Set **C**

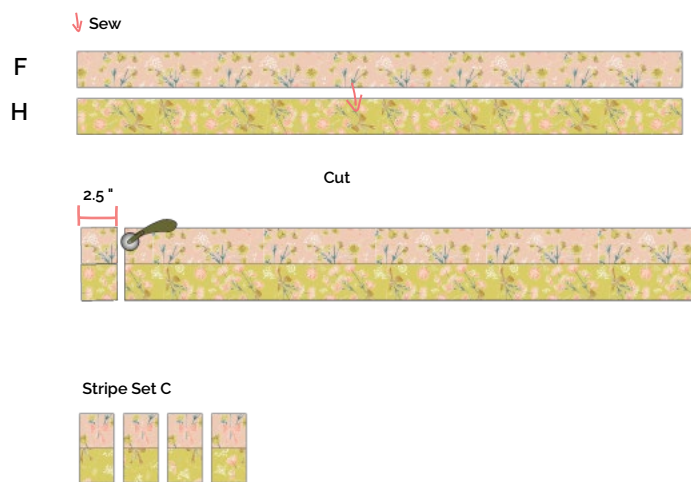


DIAGRAM 6

- Repeat the same steps with fabrics L, M, F, sew, cut at 2.5" and you will have Stripe Set **d**

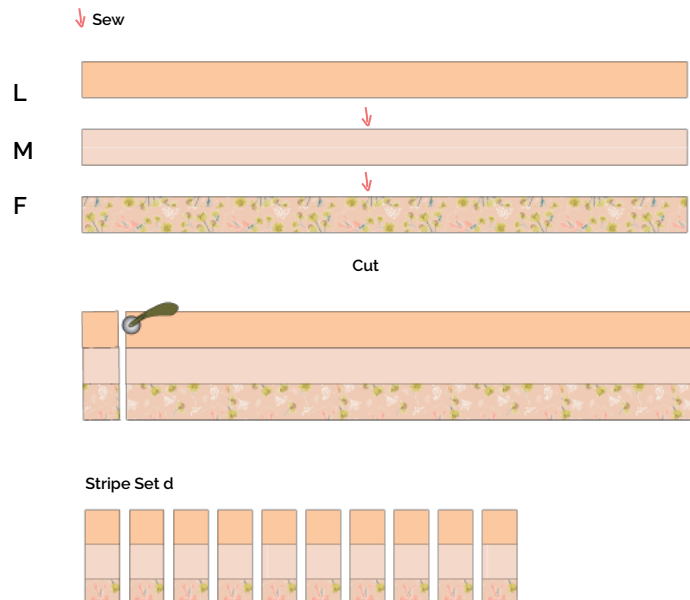


DIAGRAM 7

- Repeat the same steps with fabrics O, K, L, M, sew, cut at 2.5" and you will have Stripe Set **e**

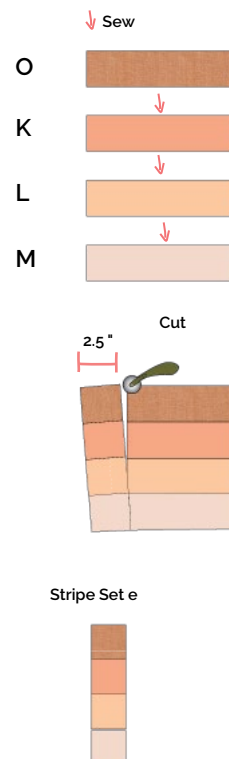


DIAGRAM 8

- Repeat the same steps with fabrics L, N, O, K, L sew, cut at 2.5" and you will have Stripe Set **f**

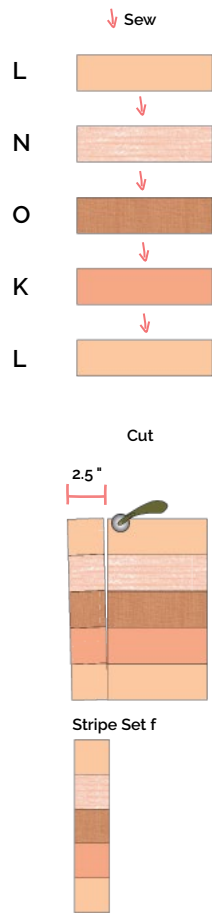


DIAGRAM 9

- Repeat the same steps with fabrics F, M, L, N, O, K, sew, cut at 2.5" and you will have Stripe Set **g**

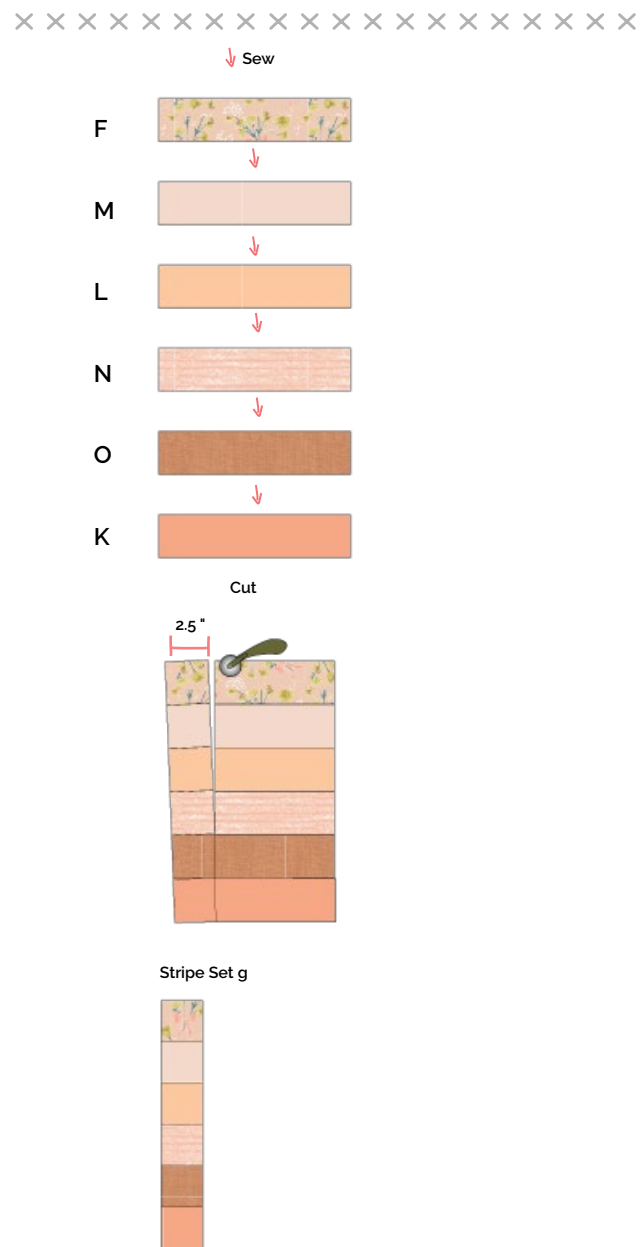
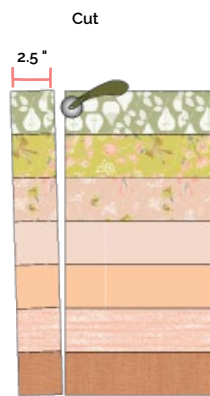
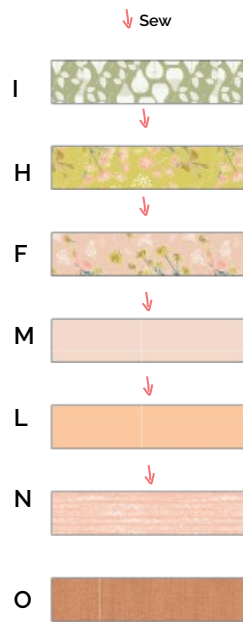


DIAGRAM 10

- Repeat the same steps with fabrics I, H, F, M, L, N, O sew, cut at 2.5" and you will have Stripe Set **h** (See diagram 11)



Stripe Set h

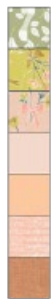


DIAGRAM 11

- Lastly we will need one (1) square of 2.5" x 2.5" from fabrics B, I, A (One(1) per block)



Now we will put the block together by columns:

- **Column 1:** Perfect Square of 2.5" from fabric B + Strip Set b + Stripe Set a.
- **Column 2:** Strip Set b + Strip Set a.
- **Column 3:** Stripe Set b + Stripe Set a.
- **Column 4:** Stripe Set b + Stripe Set a + Perfect Square of 2.5" from fabric I.
- **Column 5:** Perfect Square of 2.5" from fabric A + Strip Set a + Stripe Set c.
- **Column 6:** Stripe Set a + Stripe Set d.
- **Column 7:** Stripe Set a + Stripe Set e.
- **Column 8:** Stripe Set a + Stripe Set f.
- **Column 9:** Stripe Set a + Stripe Set g.
- **Column 10:** Stripe Set a + Stripe Set h.

See Diagram 12 for column arrangement.

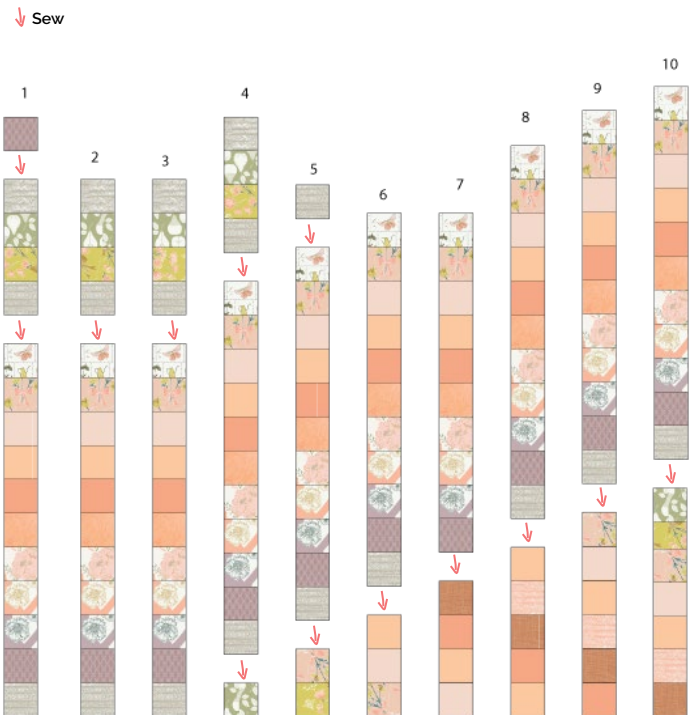
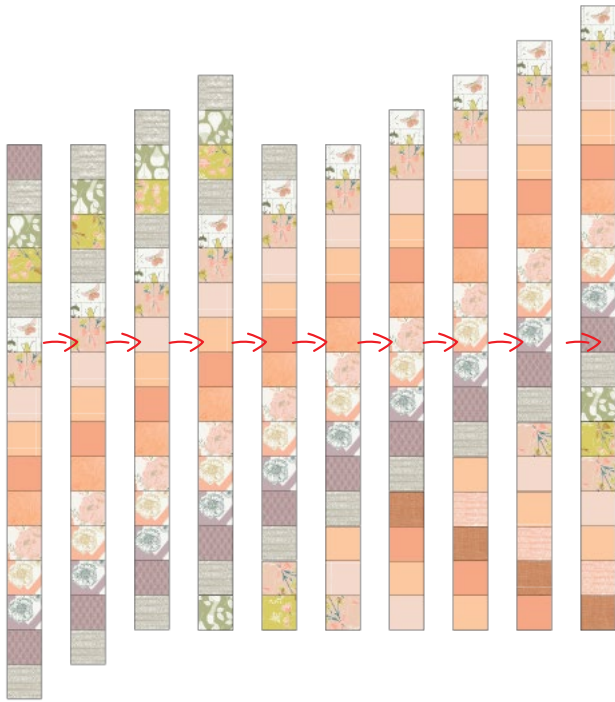


DIAGRAM 12

- Sew Columns together and trim as shown on diagram 13.

Sew



Trim

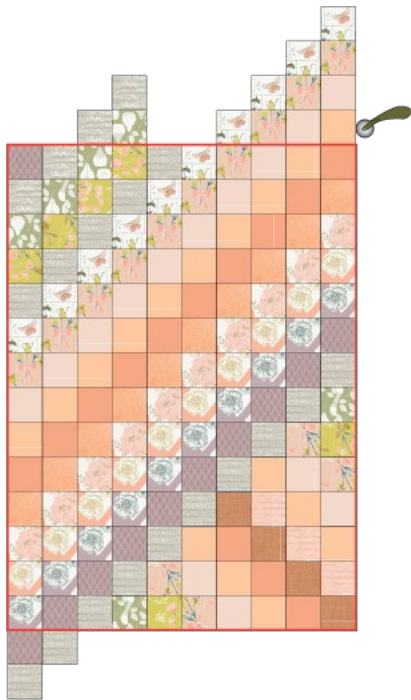


DIAGRAM 13

XX

- Your Block Y's Size will be 20' x 28', Repeat this block four (4) times.

Block Y

20 "



28 "

DIAGRAM 14

Block X :

For this block we will use the same stripe sets as in Block Y. See arrangements in diagram 15.

- Column 11: (Stripe Set **a** + Stripe Set **g**.)
- Column 12: (Stripe Set **a** + Stripe Set **f**.)
- Column 13: (Stripe Set: **a** + Stripe Set e)
- Column 14 : (Stripe Set **a** + Stripe set d)
- Column 15: (Perfect square of 2.5' from fabric A + Stripe Set **a** + Stripe set c)
- Column 16: (Stripe Set **b** + Stripe Set **a** + Perfect square of 2.5' from Fabric I)
- Column 17: (Stripe Set **b** + Stripe Set **a**)
- Column 18(Stripe **b** + Stripe Set **a**)

- Sew Strip Sets together.

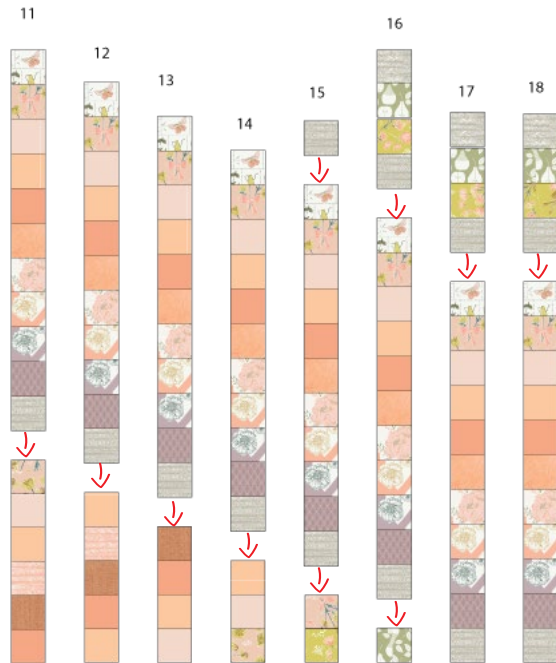


DIAGRAM 15

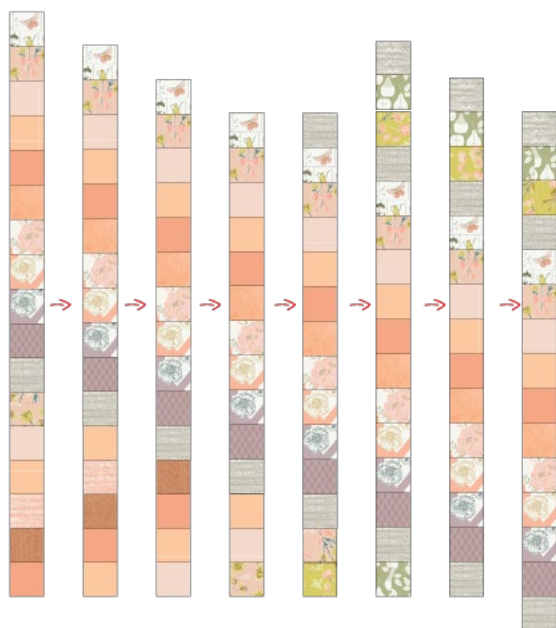
Trim



DIAGRAM 16

- Sew Sew Columns and trim to a 16' x 28' as show in diagram 16

Sew
→



Block X

18"



28 "

DIAGRAM 17

- Now that you have four Y blocks and four X blocks, arrange them as shown on diagram 18.
- Sew row one (1), then row two (2) and finally sew row one and two together (Diagram 19)

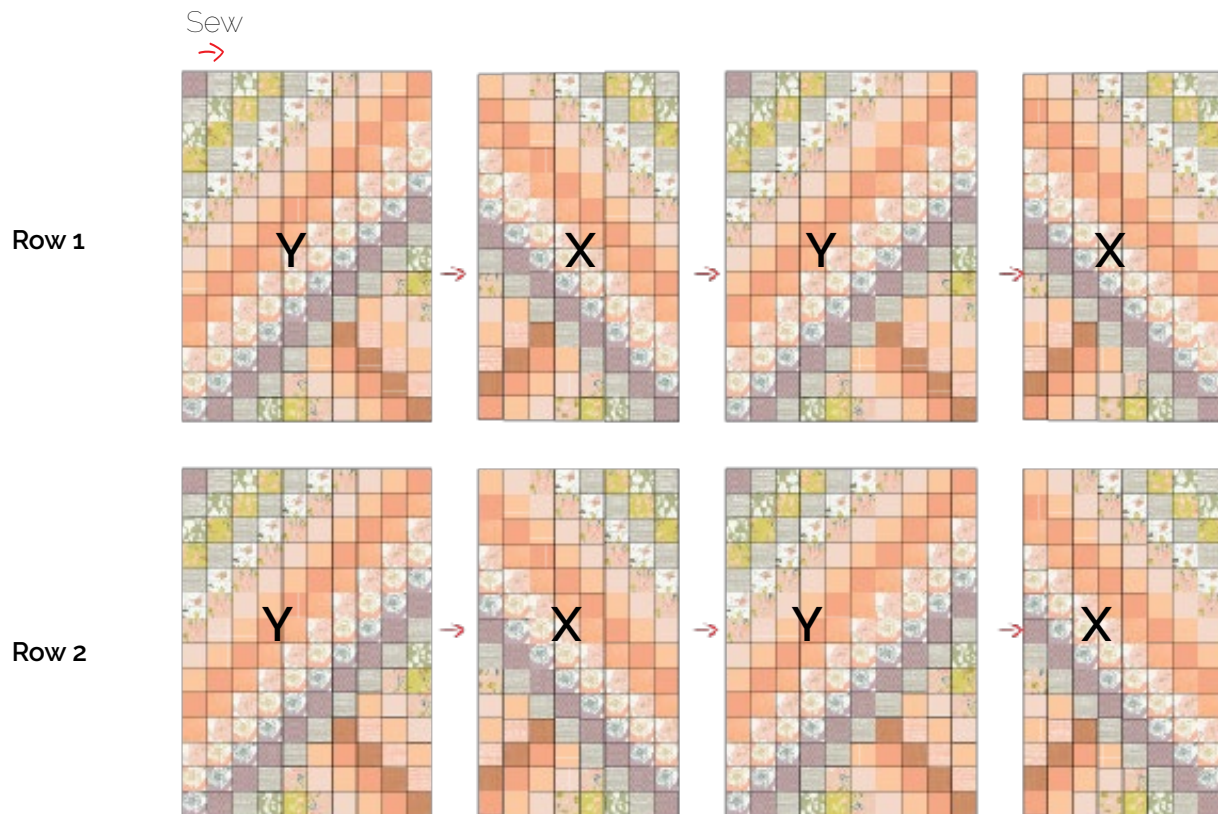


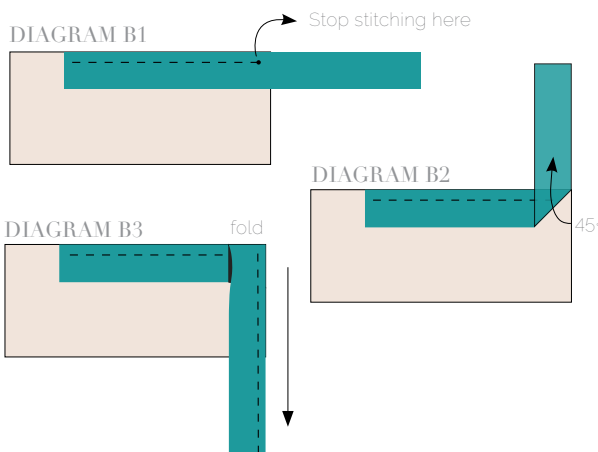
DIAGRAM 18



DIAGRAM 19

Sew rights sides together.

- Cut enough strips 1 ½" wide by the width of the fabric **B** to make a final strip 261" long. Start sewing the binding strip in the middle of one of the sides of the quilt, placing the strip right side down and leaving an approximated 5" tail. Sew with ¼" seam allowance (using straight stitch), aligning the strip's raw edge with the quilt top's raw edge.
- Stop stitching ¼" before the edge of the quilt (**DIAGRAM B1**). Clip the threads. Remove the quilt from under the machine presser foot. Fold the strip in a motion of 45° and upward, pressing with your fingers (**DIAGRAM B2**). Hold this fold with your finger, bring the strip down in line with the next edge, making a horizontal fold that aligns with the top edge of the quilt (**DIAGRAM B3**). Start sewing at ¼" of the border, stitching all the layers. Do the same in the four corners of the quilt.
- Stop stitching before you reach the last 5 or 6 inches. Cut the threads and remove the quilt from under the machine presser foot. Lay the loose ends of the binding flat along the quilt edge, folding the ends back on themselves where they meet. Press them together to form a crease. Using this crease as the stitching line, sew the two open ends of the binding with right sides together (you can help yourself marking with a pencil if the crease is difficult to see).
- Trim seam to ¼" and press open. Complete the sewing. Turn binding to back of the quilt, turn raw edge inside and stitch by hand using blind stitch.



Congratulations
& enjoy



artgalleryfabrics.com

NOTE: While all possible care has been taken to ensure the accuracy of this pattern, We are not responsible for printing errors or the way in which individual work varies. Please read instructions carefully before starting the construction of this quilt. If desired, wash and iron your fabrics before starting to cut.

© 2018 Courtesy of Art Gallery Quilts LLC. All Rights Reserved.