

White Winter



Sparkler FUSION

FABRICS DESIGNED BY AGFstudio



FUS-SK-1303
EVERLASTING BLOOMS SPARKLER



FUS-SK-1304
FROM WITHIN SPARKLER



FUS-SK-1308
STARBRIGHT SPARKLER



FUS-SK-1306
TROUVILLE ROUTES SPARKLER



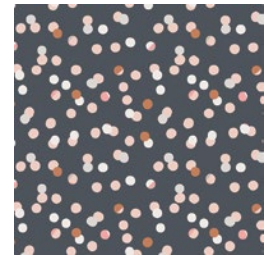
FUS-SK-1305
PINETREE SPARKLER



FUS-SK-1300
SPRINKLED PEONIES SPARKLER



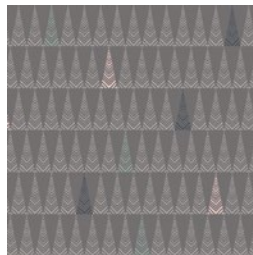
FUS-SK-1301
LITEN DITSY SPARKLER



FUS-SK-1307
CHADS SPARKLER



FUS-SK-1309
DOILAND GLOSS SPARKLER



FUS-SK-1302
TREE FARM SPARKLER



White Winter

FINISHED SIZE | 20" x 20"

FABRIC REQUIREMENTS

Fabric A	FUS-SK-1307	1/3 yd.
Fabric B	PE-408	3/4 yd.
Fabric C	FUS-SK-1304	1/4 yd.
Fabric D	PE-431	1/4 yd.
Fabric E	PE-469	1/8 yd.

BACKING FABRIC
PE-408 (Included)

CUTTING DIRECTIONS

1/4" seam allowances are included.

- Five (5) of Template 1 from Fabrics **A, B**
- Twelve (12) of Template 2 from Fabrics **A, B**
- Forty six (46) of Template 3 from Fabric **C**
- Forty four (44) of Template 3 from Fabric **D**
- Two (2) 22 1/2" x 1 strip from Fabric **E**

CONSTRUCTION

Sew all rights sides together with 1/4" seam allowance.

- Take Template 1 pieces and pair them alternating Fabric **A** and **B** pieces as in the diagram below



DIAGRAM 1

- Take Template 2 pieces and pair each piece alternating Fabric **A** and **B** as diagram below

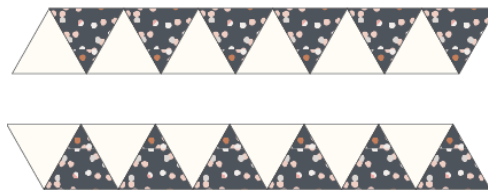


DIAGRAM 2

- Take Template 3 fabric pieces and pair each piece alternating Fabric **C** and **D** as diagram below.
- Follow diagram below for each strip assembly



DIAGRAM 3

- Follow diagram below for each row assembly

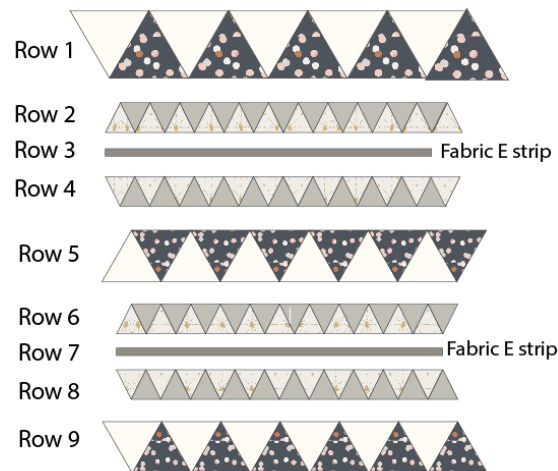


DIAGRAM 4

- Quilt as desired
- Trim to a 20 1/2" x 20 1/2" square

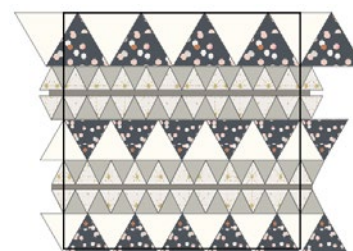


DIAGRAM 5

