

XXXXXXXXXXXXXXXXXXXXXXXXXXXX

NORTH



Sparkler FUSION

FABRICS DESIGNED BY AGFstudio



FUS-SK-1303
EVERLASTING BLOOMS SPARKLER



FUS-SK-1304
FROM WITHIN SPARKLER



FUS-SK-1308
STARBRIGHT SPARKLER



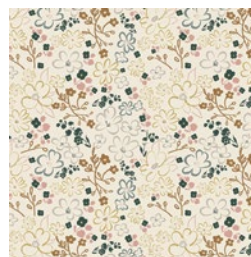
FUS-SK-1306
TROUVILLE ROUTES SPARKLER



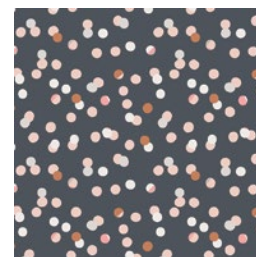
FUS-SK-1305
PINETREE SPARKLER



FUS-SK-1300
SPRINKLED PEONIES SPARKLER



FUS-SK-1301
LITEN DITSY SPARKLER



FUS-SK-1307
CHADS SPARKLER



FUS-SK-1309
DOILAND GLOSS SPARKLER



FUS-SK-1302
TREE FARM SPARKLER



FEEL THE DIFFERENCE © 2018 Courtesy of Art Gallery Quilts LLC. All Rights Reserved.

NORTH

FINISHED SIZE | 56" x 21"

FABRIC REQUIREMENTS

Fabric A	FUS-SK-1302	½ yd.
Fabric B	FUS-SK-1304	½ yd.
Fabric C	PE-430	1 yd.
Fabric D	FUS-SK-1309	¾ yd.
Fabric E	PE-472	¾ yd.
Fabric F	DEN-S-2006	F8
Fabric G	FUS-SK-1301	F8
Fabric H	FUS-SK-1307	F8
Fabric I	PE-452	⅓ yd.

BACKING FABRIC

Fabrics **C** - 1 ½ yd

BINDING FABRIC

Fabric **A** (Included)

ADDITIONAL MATERIAL

Steam-a-Seam double side fusible tape

CUTTING DIRECTIONS

¼" seam allowances are included.

- Thirty four (34) of Template 1 from Fabric **A**
- Thirty six (36) of Template 1 from Fabric **B**
- Two (2) 28 ½" x 15 ½" rectangles from Fabric **C**
- Two (2) Deer Template from Fabric **D**
- One (1) Deer Template from Fabrics **E, I**
- Six (6) Star template from Fabrics **B, E, G**
- Different size of square pieces from Fabrics **B, D, E, F, H**

CONSTRUCTION

Sew all rights sides together with ¼" seam allowance.

- Start by assembling Template 1 pieces from Fabric **A** and **B** as diagram below.
- You will assemble two long strips



DIAGRAM 1

- Take your 28 ½" x 15 ½" rectangle pieces from Fabric **C** and pair them together.



DIAGRAM 2

- Now, pair on both edges the triangle strip piece.



DIAGRAM 3

- You can quilt as desired, or quilt when you finish your entire project.
- Take one 10" x 11" square piece from Fabric **J** and start applying your square pieces from Fabric **B, D, E, F, H** as a collage mode with Steam-a-Seam already applied on the opposite side of your fabric. (Diagram 4.1)
- Use different sizes and alternate your fabrics as desired.
- When placed your pieces as you desired position, place your Deer Template and double check you have covered all the deer with the prints. (Diagram 4.2)
- Steam your pieces
- Then, place some steam-a-seam on the opposite side of the Fabric **J** square.
- Press
- Now, trace and cut your Deer Template and cut (Diagram 4.3)

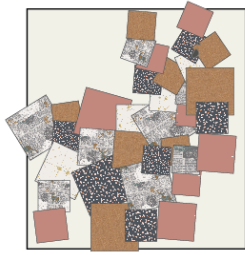


DIAGRAM 4.1

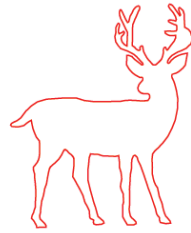


DIAGRAM 4.2



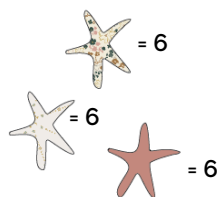
DIAGRAM 4.3

- Repeat the same process for the other Deer
- Take your Fabrics **D**, **E** and **I** place Steam- a-Seam- on one side.
- For Fabric D, you will cut two (2) Deer Templates
- Trace the Deer Template
- Cut



DIAGRAM 5

- Trace your Star Shapes on the Fabrics **B**, **E**, **G**
- Place Steam-a-Seam for each piece.
- You will have a total of six (6) stars for each color fabric.



- Now, start placing your Deer Templates on your table runner.
- To be more precise, measure about 2" from the edge and place your first Deer.
- Then, measure again approximately 2" and place your other Deer.
- After you place all your deers steam your pieces and then, for better result, edge stitch your pieces.
- Place your stars
- Steam
- Edge stitch each star.

QUILT ASSEMBLY

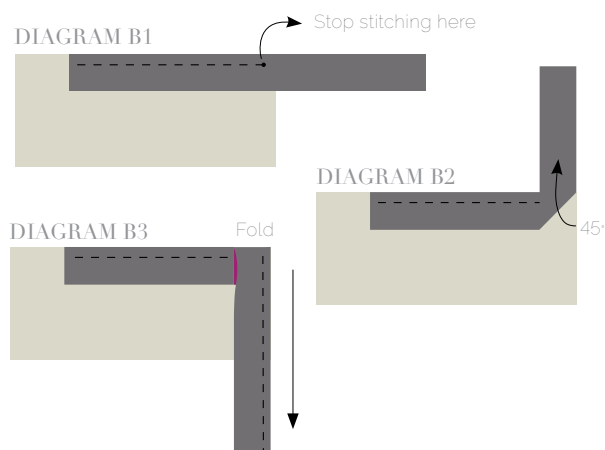
Sew rights sides together.

- Place BACKING FABRIC on a large surface wrong side up. Stretch it with masking tape against that surface.
- Place BATTING on top of backing fabric.
- Place TOP on top of the batting with right side facing up. Smooth away wrinkles using your hands..
- Pin all layers together and baste with basting thread, using long stitches. You can also use safety pins to join the layers.
- Machine or hand quilt starting at the center and working towards the corners. Remember that quilting motifs are a matter of personal preference. Have fun choosing yours!
- After you finished, trim excess of any fabric or batting, squaring the quilt to proceed to bind it..

BINDING

Sew rights sides together.

- Cut enough strips $1\frac{1}{2}$ ' wide by the width of the fabric **A** for each napkin, to make a final strip 164' long. Start sewing the binding strip in the middle of one of the sides of the napkin, placing the strip right side down and leaving an approximated 5' tail. Sew with $\frac{1}{4}$ ' seam allowance (using straight stitch), aligning the strip's raw edge with the napkin top's raw edge.
- Stop stitching $\frac{1}{4}$ ' before the edge of the quilt (**DIAGRAM B 1**). Clip the threads. Remove the quilt from under the machine presser foot. Fold the strip in a motion of 45° and upward, pressing with your fingers (**DIAGRAM B2**). Hold this fold with your finger, bring the strip down in line with the next edge, making a horizontal fold that aligns with the top edge of the quilt (**DIAGRAM B3**). Start sewing at $\frac{1}{4}$ ' of the border, stitching all the layers. Do the same in the four corners of the quilt.
- Stop stitching before you reach the last 5 or 6 inches. Cut the threads and remove the quilt from under the machine presser foot. Lay the loose ends of the binding flat along the quilt edge, folding the ends back on themselves where they meet. Press them together to form a crease. Using this crease as the stitching line, sew the two open ends of the binding with right sides together (you can help yourself marking with a pencil if the crease is difficult to see).
- Trim seam to $\frac{1}{4}$ ' and press open. Complete the sewing. Turn binding to back of the quilt, turn raw edge inside and stitch by hand using blind stitch.



XX



FEEL THE DIFFERENCE

artgalleryfabrics.com

NOTE: While all possible care has been taken to ensure the accuracy of this pattern, We are not responsible for printing errors or the way in which individual work varies. Please read instructions carefully before starting the construction of this quilt. If desired, wash and iron your fabrics before starting to cut.

© 2018 Courtesy of Art Gallery Quilts LLC. All Rights Reserved.

